

# The Collection #12



CLING STAMPS

## Christmas

By Henriëtte Geurkink  
[www.jetdesign-54.blogspot.com](http://www.jetdesign-54.blogspot.com)



Cut a 10.5 x 15 cm white single-fold card. Cut from green card five rectangles: 9 x 14.4 cm, 9.9 x 3.2 cm, 6.1 x 2.9 cm, 4 x 11 cm and 2.5 x 11 cm. Cut a 6 cm Ø green icicle. Cut design paper with angels and stars into a 9.3 x 13.8 cm rectangle; red design paper with green icicles into 3.4 x 10.4 cm and red

with Santa into a 1.9 x 10.4 cm strip. Cut green design paper with blue dots into 9.3 x 2.6 cm and yellow with church into 5.5 x 2.3 cm. Stamp the text and Santa onto the yellow design paper and cut out. Layer to the card as shown. Finish off the card with flowers and twigs.



Cut a 10.5 x 15 cm wine red single-fold card and die cut a circular border. Cut kraft card into 9.9 x 14.4 cm and white into 8.9 x 13.4 cm; emboss the latter with the Christmas template. Cut strips from design paper: 2.5 x 13 cm, 2.5 x 12 cm and

2.5 x 11 cm; cut triangles from the top. Stamp the church and text onto water colour paper and cut out. Layer the text to the wine red oval and trim leaving a 2 mm border. Finish off the card as shown.



Cut a 10.5 x 15 cm ice blue single-fold card. Cut kraft card into 9.9 x 14.4 cm, white into 9.3 x 13.8 cm and design paper with Santa into 8.7 x 13.2 cm. Die cut the Craftable star from white card and light blue/green design paper. Cut a 4.4 cm Ø

circle from white card and a slightly smaller one (4 cm Ø) from yellow design paper with church; stamp the image onto the second circle. Stamp the text onto a piece of white water colour paper and cut out. Finish off the card as shown.

CAROUSEL CRAFTABLES

## Xmas tree

By Astrid Schipper  
[astridschipper.blogspot.nl](http://astridschipper.blogspot.nl)



Cut an 18 x 24 cm green single-fold card and two 17.5 x 11.5 cm rectangles from Brilliant card. Cut two 7.4 x 11 cm strips from green/red design paper and two 4 x 11 cm strips from blue design paper. Ink all parts with distress ink and adhere to the card. Layer lace to the card. Cut out Santa and the child from design paper and adhere to the card. Die cut the three sizes of the carousel

template from green card. Ink the die cut parts with distress ink and score folds. Open up the card and first adhere the largest carousel shape, then the next size and finally the smallest one to create a pop-up Christmas card. Decorate the tree with lace, ribbon, pearls, bows of tulle and bells. Finish off the card with a stocking, corner and bow.



Cut an 18 x 24 cm green single-fold card and two 17.5 x 11.5 cm rectangles from Brilliant card. Cut two 7.4 x 11 cm strips from green/red design paper and two from cream-coloured design paper. Cut two 3.5 x 12 cm strips from Brilliant card and two 3 x 12 cm strips from green card. Ink all parts with distress ink. Die cut the corners from Brilliant card and ink. Adhere the strips to the single card, mark the corners and trim leaving a border to stick the corners onto. Mount the layers onto the card. Layer the strips and the lace to the card. Cut

out the pictures and adhere to slightly larger Brilliant card. Die cut the three sizes of the carousel die from green card. Score the folds and sprinkle Frantage over the shapes and melt with heat-tool. Open up the card and first adhere the largest carousel shape, then the next size and finally the smallest one to create a pop-up Christmas card. Decorate the tree with bows of tulle. Finish off the card with poinsettias, twigs, stars and a bow with charm.



Cut an 18 x 24 cm green single-fold card and two 17.5 x 11.5 cm rectangles from Brilliant card and two 17 x 11 cm rectangles from design paper. Ink all part with distress ink and adhere to the card. Layer lace and pearl ribbon to the card. Die cut the window from green card, layer the picture behind and then mount all layers onto the card. Cut out the picture of Santa and layer to slightly larger green card and then mount on top of the

card. Die cut the three shapes of the carousel template from Brilliant card. Ink the die cut parts with distress ink and score folds. Open up the card and first adhere the largest shape, then the smaller one and finally the smallest to create a pop-up Christmas card. Decorate the tree with lace. Finish off the card with a text, twigs, poinsettias and a bow with charm.

## CHRISTMAS CANDLES Decorations

By Sigrid Klingenberg  
sigridklingenberg.blogspot.nl

### General

Ink around the edges of kraft card and design paper using a brown ink pad.

Make Christmas red roses with LR0256 and layer moss green mini poinsettias (LR0142) behind.

Use pearly white card and LR0142 for the poinsettias, layer moss green mini poinsettias behind and stick die cut dark brown motifs in the centre.



Copy pattern 1A twice onto 30 x 30 cm kraft card. Layer 13 x 14.5 cm green/white striped design paper to the sides. Cut an 8.3 cm Ø circle out of one side (see pattern 1). Adhere the box together. Die cut CR1248 five times. Cut out an 8.3 cm Ø circle from two of the shapes, layer them onto the die cut circles. Stick mica/sheet to the inside. Die cut two 8.3 cm Ø circles from brown design paper and one from green/white striped design paper. Layer onto the remaining three circles. Stick the two

circles onto the closed sides, save the fifth for the lid. Make a base with pattern 1C and place inside the box; cut out a 7.3 cm Ø circle. Copy pattern 1B onto 18.8 x 18.8 cm kraft card. Adhere the lid together. Cut 13.3 x 13.3 cm brown design paper and four 13.3 x 2 cm strips; stick to the top and sides of the lid. Finish off the box with adhesive pearls, bells, corners, pictures, roses, rope, decorated hat pins and tulle.



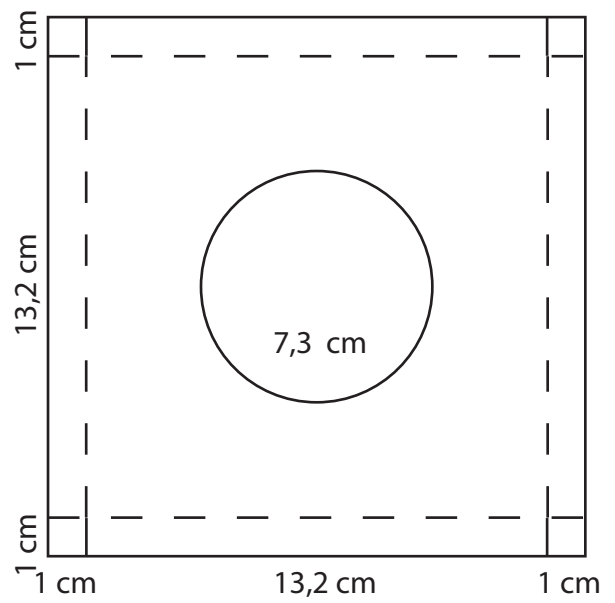
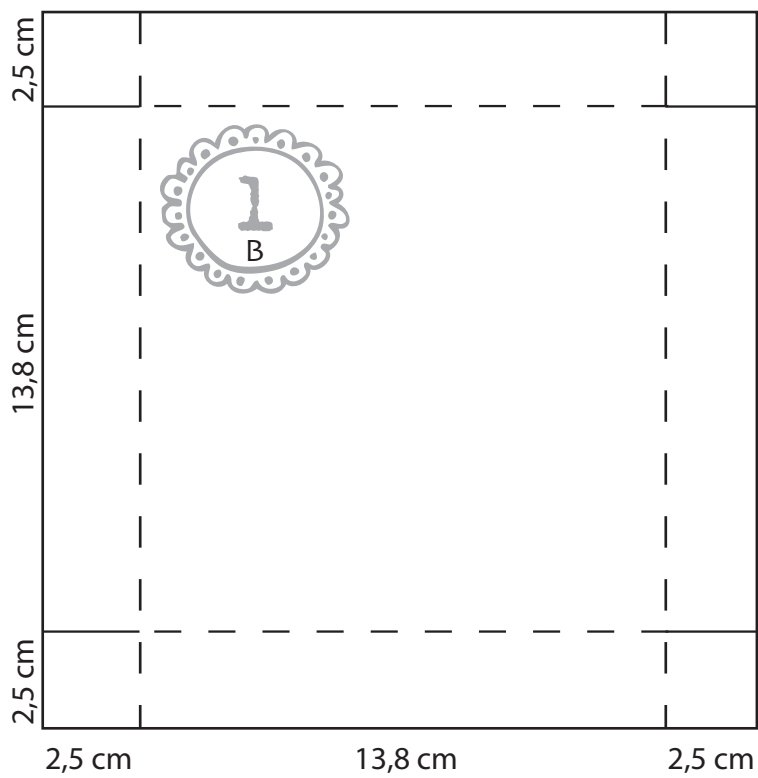
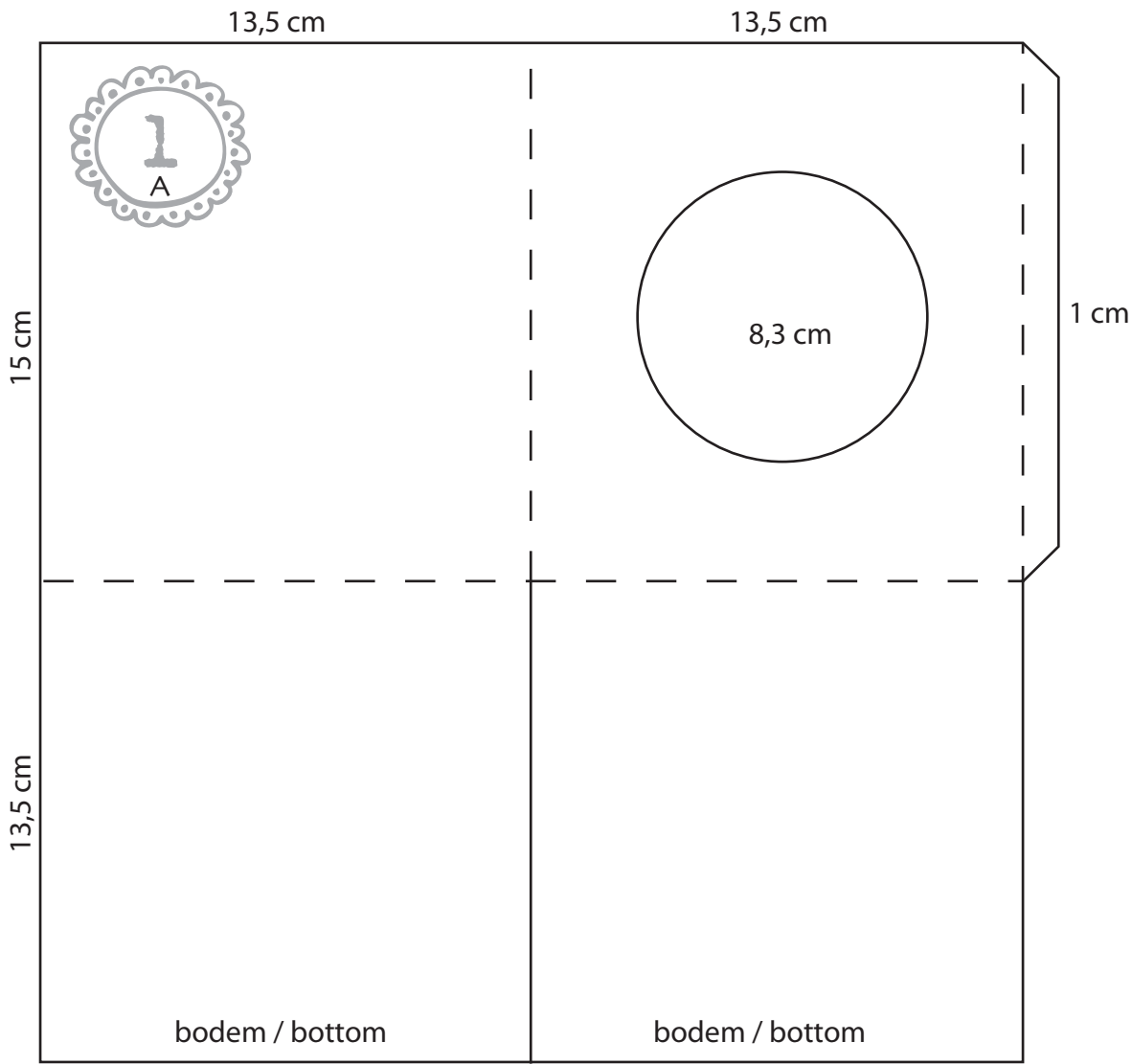
Cut a 14.5 x 29 cm pearly white card and score the shortest side at 13 cm and 16 cm. Cut three 13.5 x 12 cm triangles from blue design paper and layer onto three 14 x 12.5 cm kraft card triangles. Attach to the front and two inside walls of the card. Cut a 13.5 x 2 cm strip from blue design paper and layer onto a 14 x 2.5 cm kraft card. Stick to the centre of the card. Cut a 14 x 9.5 cm rectangle from brown design paper; copy pattern 2 onto it.

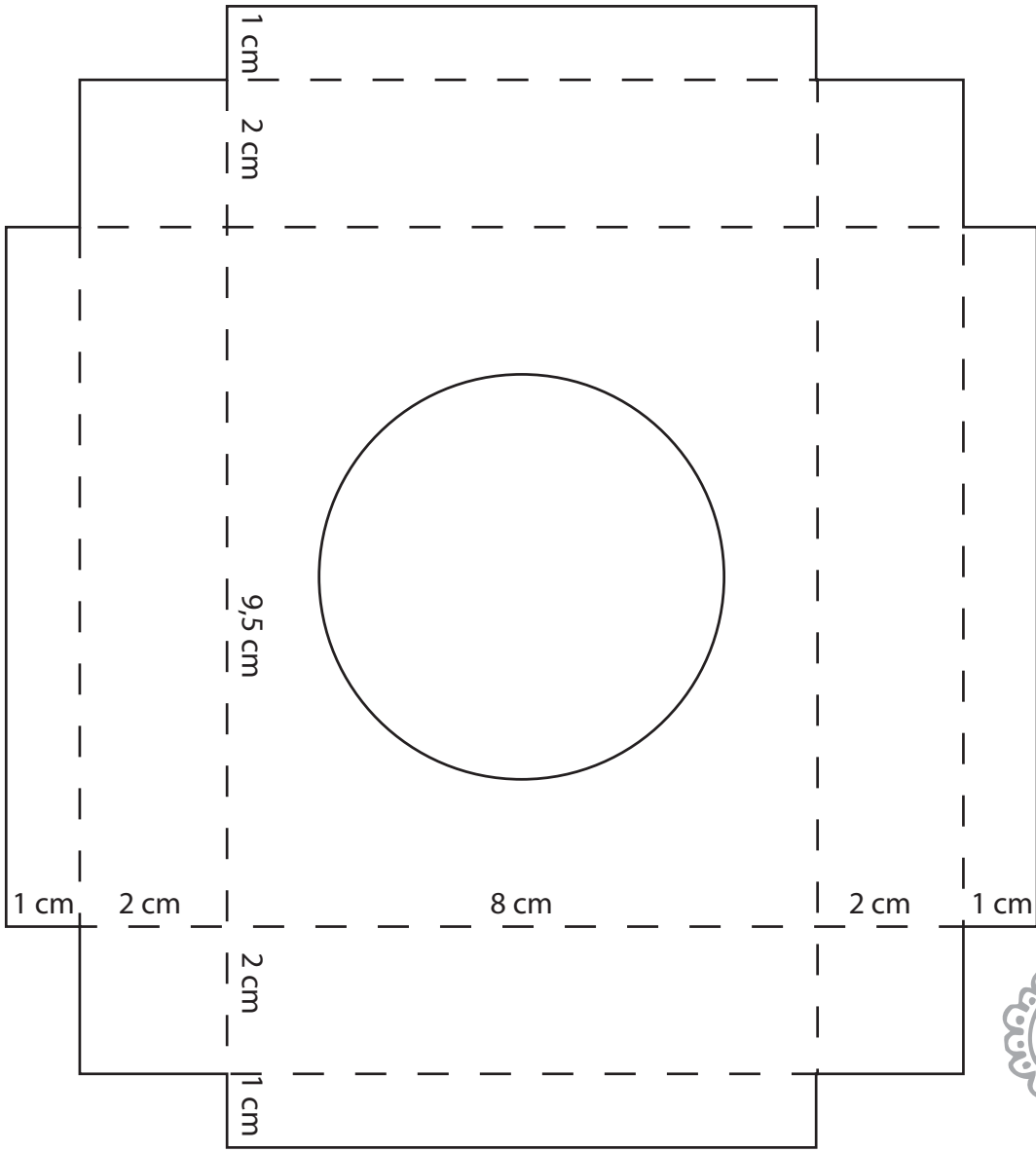
Cut out a circle from the centre, the size of the tea light. Fold and adhere together and stick to the inside of the card as shown. Cut an 8 x 4.5 cm rectangle from brown design paper and stick to 8.5 x 5 cm kraft card. Stick to the other wall on the inside. Leave the top open to insert a tag. Die cut a tag and stamp a text. Finish off by adding adhesive pearls, a border, a picture, corners, poinsettias, rope, a star and swirls.

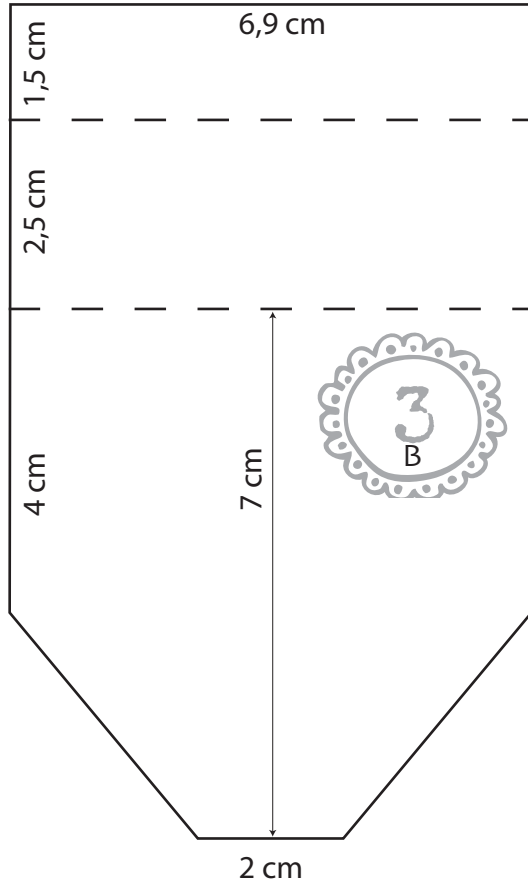


Cut a 28 x 20 cm pearly white rectangle and copy pattern 3A onto it. Cut two 6.5 x 7 cm brown rectangles and two 2 x 7 cm strips; layer to lower part of the card. Cut two 6.5 x 18.5 cm blue rectangles and two 2 x 18.5 cm strips. Layer them to the upper part of the box making sure the blue shapes overlap the brown ones. Adhere the box together. Copy pattern 3B onto pearly white card; adhere the glue strip to the inside of the box.

Stick 2.5 cm smaller design paper to the flap and top of the box. Attach velcro under the flap. Finish off the box with a charm, hearts, a picture, poinsettias, roses, rope, decorated hat pins and swirls.







25,5 cm

1 cm

2,5 cm

7 cm

2,5 cm

7 cm

2,5 cm

# Ornaments

By Wilga van 't Zelfde  
mypaperpasion.blogspot.nl



Die cut the star from pearly white card. Cut two 2.5 cm wide strips from design paper. Score them at 0.5 cm. Fold the paper alternately and stick together to create a circle. Attach flowers to the



Layer design paper to both sides of the inlay card. Die cut two scalloped circles from carnation white and two from design paper. Layer together and then to both sides of the inlay card. Stamp the image and colour in. Attach the image raised with foamtape. Attach the flowers and the text



Punch twenty circles from design paper. Draw triangles onto the circles and fold the lines. Stick ten folded circles alternately together in a straight line. Layer the first and last together to create a circle. Then add five circles to the top and five to the bottom to create a ball. Place the ball into the transparent bauble. Die cut stars from carnation



Punch twenty circles from snowpaper. Draw triangles onto the circles and fold the lines. Stick ten folded circles alternately together in a straight line. Layer the first and last together to create a circle. Then add five circles to the top and five to the bottom to create a ball. Decorate the sections



Layer design paper to both sides of the inlay card. Die cut the large snowflake from snowpaper. Layer to one side. Die cut the village from snow paper and the deer from brown card. Layer them with foam tape to the other side. Place the inlay

circle. Layer the star behind the circle and then everything onto the bauble. Decorate the bauble with adhesive pearls. Tie a ribbon to the bauble.

to the other side. Close the bauble and adhere red ribbon to the outside. Stamp the text to a carnation white strip, mat on Christmas red and attach to the bauble with ribbon and baker's rope.

white card and design paper. Stick together. Die cut the banner from carnation white card. Mat on Christmas red. Stamp the text. Stick to the top of the Christmas bauble. Thread lace and rope through the eye.

with a blue star and adhesive pearl. Place the ball into the transparent bauble. Die cut a large icicle and banner from snowpaper. Mat on ice blue card. Stick to the top of the Christmas bauble. Thread lace and rope through the eye.

card into the transparent bauble. Close the transparent bauble and adhere the pompon ribbon to the outside. Die cut the label from snowpaper. Attach to the bauble together with the ribbon.

# Boukjes decorations

By Boukje van der Weit  
boukjesblog.blogspot.com

## General

Die cut each die twice for a front and back, unless stated otherwise.

Use transparent nylon thread/fishing string and beads for all hangers.

Use double-sided tape and Tacky Glue for pasting.



Die cut the house 4x and fold in half lengthwise, adhere the two halves together, except the last one. Take a long thread, string one bead in the centre and knot. Using the double thread, string a second bead, lay the thread in the centre of the house and place the second bead in the heart shaped aperture (see photo), stick the house together now.

Adhere to the thread from the bottom up:

\*- a Craftable star with snowflake and an adhesive pearl

- a Craftable star with border with large star

- a Collectable scallop and a Nestability circle with text

- three Creadable ornaments (stuck together)

String onto the double thread a few beads in between.



For hanger 'Love' the long thread is not strung through a bead, but through the eye of the gold-painted peg, knot and string the double thread through a wooden bead. Hang the heart with text on the peg and stick a snowflake of snow pa-

per to it. Then follow the instructions of hanger 'House' from \*.



Take a double length of transparent nylon thread and string a bead in the centre. Die cut four snowflakes from carnation white card and apply distress ink vintage photo. Die cut the Craftable star 4x from snow paper and stick to the doilies. Fold the snowflakes in half and stick together.

Place the double thread in between and let the bead hang as shown. Die cut four dark red poinsettias and stick to top of Christmas bauble. String a few more beads and knot.

Die cut stars with border from carnation white card and plain stars from design paper. Stamp/colour the images in with distress ink, trim leaving a narrow border. Take a long thread, string a bell and knot. String a few beads to the double thread and adhere thread between the stars. To give some volume to the stars, cut small squares of a thin cardboard box and place them between

the two stars. Stick the tips of the stars together using Tacky Glue; you might like to place pegs on the tips while drying. Layer birds to the front and a twig, a poinsettia and a few holly twigs to the back. Tie a label to the top, stamp a text onto both sides and add holly twigs and berries to complete. Attach the peg.

## FINISHING TOUCH Christmas table

By Marjolein Wormsbecher  
<http://magnificentmagnolias.blogspot.nl/>



Cut 9 x 14 cm kraft card and fold in half, creating a 9 x 7 cm single-fold card. Ink the edges with walnut stain and stamp swirls (CS0833) in the bottom left and top right corners. Assemble the white Christmas roses (RB2222). Die cut the deer (COL1330) from kraft card and ink the edges with walnut stain. Roll out a piece of clay thinly and use a Creatable (LR0268) to press out a frame from the clay. Leave clay in the die and cut around with a sharp knife and cut the centre out, creating a frame. Leave to dry or use a heattool. Sand down after drying, then spray with Glimmermist pearl abundantly, leave to dry again. Adhere the frame to the centre of the card and apply glitter glue. Attach the white Christmas roses to the left bottom and right top corners. Tip: Use a white gel pen or white pencil to write a name onto the card.

Cut from kraft card: the text Xmas (COL1339), the largest frame of Petra's ornaments (LR0278), the Christmas stocking, the heart and 8x the star of Tiny's Christmas stocking (CR1256), three twigs, two long and two short pinecones of Tiny's pinecones (LR0286) and pinecones (LR0181). Cut one long and one short pinecone into slantwise strips, following the direction of the pattern on the pinecones. Ink the shapes from kraft card with

walnut stain, place the strips in the right order, the way they were cut. Start at the top to adhere the strips of pinecones, adhere each layer just over the edge of the previous one in the pattern of the pinecone. Shape the two pinecones and the Christmas stocking nicely. Adhere the two pinecones and three twigs together with the branch behind the stocking. Cut from glitter snowpaper (CA3104): one stocking and eight stars of Tiny's Christmas stocking (CR1256) and the one but largest frame of Petra's ornaments (LR0278). Cut out the heel, toe and border of the stocking and layer them to the stocking of kraft card. Fold a 12.5 x 26 cm sheet of vellum in half and sew the sides at 13 cm together at 1 cm in from the side, using white thread and a sewing machine. Tug the vellum bag into the cellophane card bag and put the Hot Chocolate inside. Push four white and four kraft stars between the vellum and the cellophane on both sides of the bag. Paste the bag and attach the white frame (LR0278) to the frame of kraft card. Mount onto the bag making sure the words Hot Chocolate are visible. Layer the text (COL1339) to the frame. Attach the stocking as shown. Finish off with a white gelpen and tie a rope with bell to the stocking.



## General

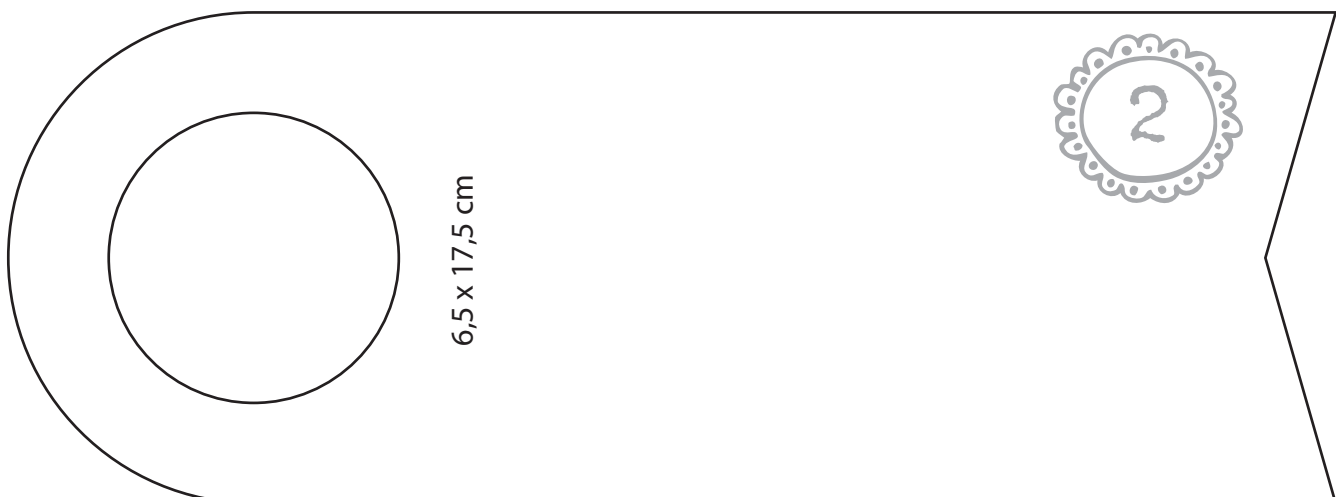
Ink all parts cut from kraft card with distress ink walnut stain. Cut the pattern from kraft card and vellum; use a punch to cut one side of the label into shape. Cut 1 cm off the vellum. Stamp the swirl (CS0833) with white ink onto vellum and sprinkle embossing powder onto it. Melt with heattool. Only apply glue around the circular aperture and layer the vellum to the kraft card. Die cut the envelopes (COL1337) 2x from kraft card. Fold and paste together, one envelope can be pasted completely. Use the passe-partout Craftable square (CR1239) to die cut a small square from white paper and layer to the inside of the open envelope. Cut two Christmas trees, one deer and a lantern post (COL1330) from kraft card. Adhere to the envelope. Stamp different Eline's Christmas Sentiments (EC0149) a few times onto

both envelopes. Adhere the envelopes onto the bottle label. Cut from kraft card Eline's Christmas (COL1338) and Tiny's mittens (CR1255) and a few twigs from Tiny's pinecones (LRO286). Attach the text to the envelopes slantwise. Stamp the text (COL1338) with StazOn timber brown under the cut-out text. Leave the mittens in the die and work with white ink. Hang the mittens over the letter 'S'. Attach the scarf charm (JU0902) above the mittens using a small length of sisal rope. Use strong glue or Tacky tape to attach a piece of sisal behind the bottle label. Adhere a few twigs (LRO286) behind the mittens. Assemble the Christmas roses (RB2222) and attach.



Die cut the winter scenery (LRO283), the village (LRO284) and the Christmas tree (COL1330) from kraft card. Ink all edges with white ink. Cut to the size of the lid and layer onto it. Do not adhere the houses and the small trees, but fold them upwards a little to create depth. Stamp the fox and owl (EC0148) with white ink onto vellum, apply glitter glue randomly. Only use glue behind the spots where glitter glue has been applied. Adhere to the lid. Finish off with Tacky tape and narrow lace (JU0907). Use an 11 x 41 cm sheet of baking paper and score at 11 cm, 15 cm, 26 cm and 30 cm. Stamp the rabbit with text (EC0150) onto the right-hand side of the baking paper. Layer the

narrow lace (JU0907) to each side of the rabbit using Tacky tape. Use the rest to make a pulling loop on the open side. Turn over the baking paper with the print downwards and place into the centre of the box. Take a new sheet of baking paper and crinkle, leave just enough space for three bonbons on one side and a small bottle of Baileys on the other side. Close the lid. Use Tacky tape for the wide lace and attach it around the bottom of the box.





CREATE YOUR OWN

# Marianne Maison

By Marianne Perlot

Collect empty glass jars (applesauce, baby food etc.). Wash off well by hand or place in dishwasher.

Remaining glue can be wiped off with paraffin.

Die cut the dies from sticker paper (the same way you would with ordinary paper) and adhere to the jars. Decorate with adhesive pearls randomly.

Use pieces of double-sided tape to decorate the jars and candles with lace.

Wrap a rope of twine twice/three times around the neck of the jar and tie a label to it.

Be careful when using wax lights, it's better to place LED-lights in the jars.