

The Collection #15



CREATABLES

Belle Fleur

By Jolanda Elderman
jolandacreablog.blogspot.com



Cut a 15.5 x 14.5 cm lilac single-fold card and a 15 x 14 cm white square. Adhere together and layer 14.5 x 13.5 cm design paper on top. Use the Go-Kreate die to cut out the centre. Cut the same die from design paper and adhere to the base card. Mount the frame on top with foamtape. Die cut the coach from silver-coloured mirror card

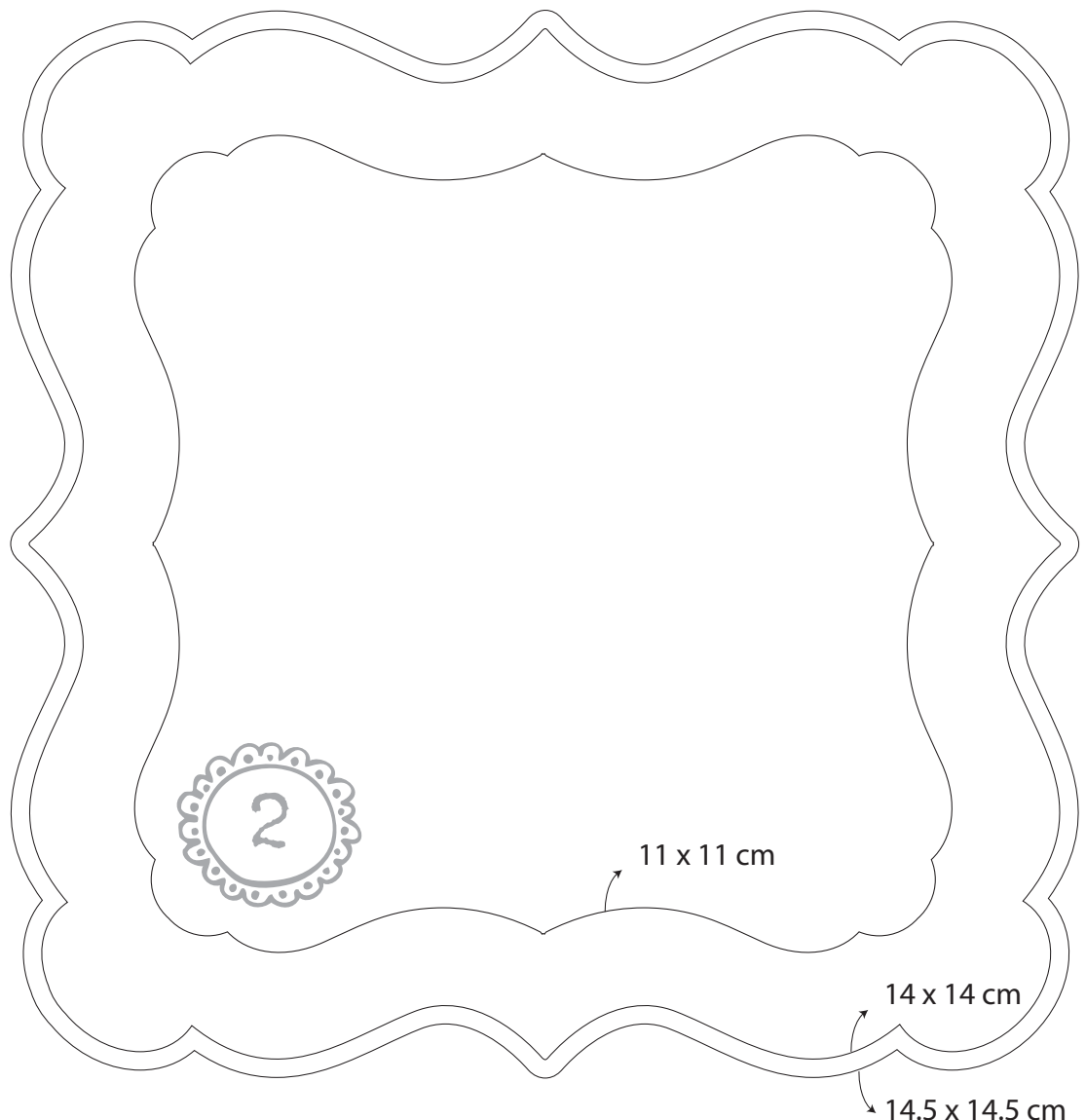
and pink card. Die cut the wheels from black card too. Ink the embossed parts and cut out. Stick the two coaches together with a curtain in between. Cut out and adhere the images. Add a bouquet of flowers and leaves in the bottom left-hand corner. Finish off the card with a bow and charm.



Die cut a cornflower blue single-fold card with the Go Kreate die. Cut the same die from design paper, layer onto the single-fold card; trim leaving a 5 mm border. Use a smaller die to cut out the centre creating a frame. Or use the pattern below. Stick foamtape to the reverse side of the frame and adhere all part to the base card. Die cut two grass borders and layer behind the

frame. Die cut the princess's coach from silver and white card. Ink the embossed part of the white coach with blue distress ink. Cut off the coach, glue a curtain behind the window and fix it to the silver-coloured coach with foamtape.

Cut out the image and stick it on. Stamp the text, cut out and adhere. Add a bow and charm to complete.





Make a base card according to the drawing and layer design paper, with distressed edges, to the card front.

Die cut the pergola from silver-coloured card. Cut a piece of white card for the centre and create the clouds with blue ink. Add all layers to the central part of the card.

Cut out the image and attach to the pergola.

Die cut CR1264 twice from green card, cut off the birds and adhere the remaining branches to the bottom left-hand corner.

Add roses and berries and a bow of scrapper's rope with a charm to complete.



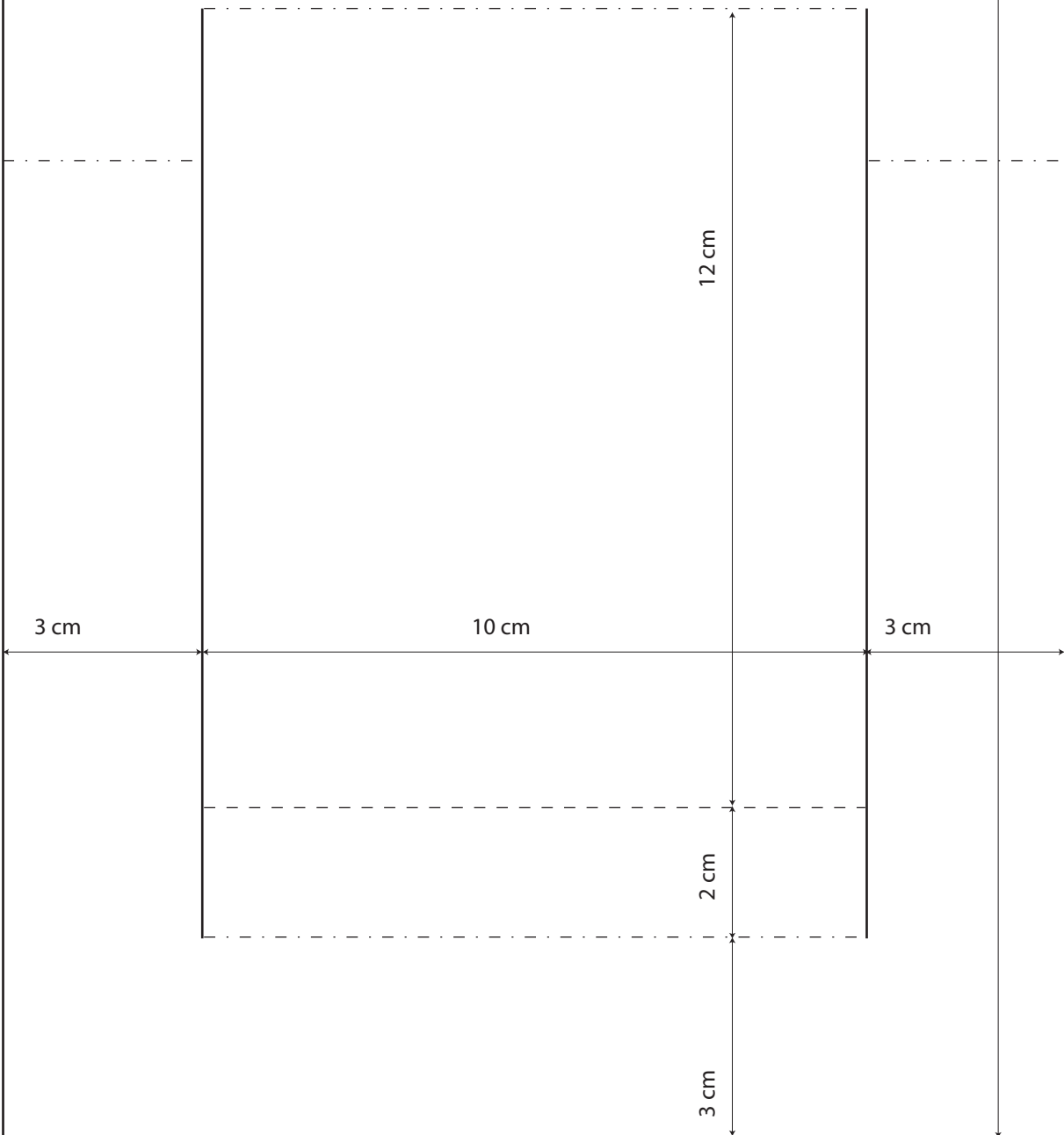
16 cm

29.5 cm

— Snijden / Cut

- - - Dalvouw / Valley fold

- - - Bergvouw / Mountain fold



Fairy Tales

By Sigrid Klingenberg
sigridklingenberg.blogspot.nl

General:

Ink around the edges of the design paper and card with distress ink vintage photo.

The back of the roses is made with Creatables LR0142. Die cut them from moss green card and work with distress ink forest moss, pine needles and walnut stain.



Trace pattern 1 onto 17.5 x 25 cm white card, score and cut as per pattern number 1.

Cut the following rectangles from green/yellow design paper: two pieces of 4.5 x 11.5 cm, one of 5.5 x 1.5 cm, one of 5.5 x 2.7 cm and one of 5.5 x 5.3 cm. Mat on kraft card, trim leaving a 2 mm border. Layer onto the base card as shown.

Cut a picture from the decoupage sheet, mat on white card; trim leaving a 2 mm border. Mat again, this time on kraft card and trim leaving a 2 mm border. Mount all layers onto the base card. Die cut CR1266 twice and attach to card. Add pictures and embellishments to complete.



Cut a 25 x 14.5 cm white rectangle, score at 5, 7, 18 and 20 cm; fold as shown. Cut a 10 x 13.5 cm rectangle from design paper. Mat on light yellow card; trim leaving a 2 mm border. Adhere to centre of card, between score lines 7 and 18 cm.

Die cut pergola from white card and adhere to centre of card. Cut out the central part as shown. Cut two 4 x 13.5 cm rectangles from design paper and mat on light yellow card. Trim leaving a 2

mm border and adhere to sides of card. Die cut the fence twice and adhere to the sides. Cut 10 x 13.5 cm from design paper and mat on light yellow card. Trim leaving a 2 mm border. Adhere this triangle in the centre of a 21 x 14.5 cm white rectangle and adhere this wide one on the reverse side of the side flaps. Add pictures and embellishments to complete.



Die cut a pergola die 1x from kraft and 1x white card, mat on blue design paper. Trim leaving a 2 mm border. Use one of these shapes as a template to cut out three similar shapes from design paper. Mat all five parts on light pink card; trim leaving a 2 mm border. The back of the last shape remains blank to write on.

Cut three 11.5 x 14.5 cm rectangles from white card. Stick the pergola shapes to the front and back, cut 2 mm larger at the top. See photo. Use a perforator to make two holes in the sides and insert two rings. Add pictures and embellishment to complete.



25 cm

— Snijden / Cut

- - - Dal vouw / Valley fold

- . - Bergvouw / Mountain fold

5,5 cm

6,5 cm

6,5 cm

6,3 cm

3,75 cm

3,75 cm

2,5 cm

2,5 cm

5,5 cm

12,5 cm

12,5 cm

17,5 cm

WELCOME LITTLE Baby Girl

By Boukje van der Weit
boukjesblog.blogspot.nl

General:

Work the kraft card with distress ink vintage photo.

The flowers are made with COL1316 (Flower). Make a small incision between the petals and shape them around a tooth pick. The leaves are made with CR1240 (Circle & Flower Stitch) and worked with distress ink mowed lawn. The silver-coloured figures are die cut from card with a layer of metal tape on top (tape: DIY or hardware store).



Cut an 11 x 11 cm bottom-fold card. Cut 10.5 x 10.5 cm pearly white card, ink around the edges. Cut 10 x 10 cm design paper and ink around the edges too. Punch a half circle from the top of all card/paper.

Die cut the border stitch die twice, layer them between the sides of the card and adhere.

Die cut the bib from pearly white and design pa-



per. Cut a 15 x 21 cm carnation white strip and fold in half. Cut 10 x 14 cm design paper and ink around the edges. Die cut note paper and a tab from grey craft card and stamp a text. Ink with distress ink vintage photo and layer behind the design paper, the punched border and the tab visible at the top and right-hand side. Layer a piece of lace across the bottom of the card. Die cut the Nestability circle with the smooth edge from design paper



Add lace around the socks and put them into the plastic bag. Die cut a large oval by Petra from white card and fold in half. Attach to top of bag; add lace. Die cut LR0303 from blossom and kraft card, work the front of the shoes with distress ink picked raspberry, repeat this with the buttons. Cut off the straps of the second pair of shoes and adhere to the first pair with foamtape.

per. Cut out the centre from the design paper and layer on top of the white bib. Stamp the text.

Die cut the duck from metal tape (see General) and attach it, together with a charm and pink ribbon to the ends of the bib. Adhere to the card.

Die cut the label and stamp a text.

Add a ribbon, a charm with rope and flowers and leaves to complete.

and the one with the scalloped edge from kraft card. Die cut the shoes from white card and design paper and ink around the edges.

Thread the laces, adhere the shoes together with foamtape and then onto the circles.

Adhere all layers to the bib and add flowers and leaves to complete. Finally thread the ribbon and rope with charm through a punched hole and tie into a bow.

Die cut the circle from design paper and mat on kraft card. Adhere the shape cut with CR1248 and attach all layers to the packaging.

Die cut two different labels with the scallop circles dies. Stamp a text to one of the them and adhere die cut feet (see General) to the other one. Tie to the packaging with rope. Add flowers and leaves to complete.

Vintage Style

By Marjan van der Wiel
marjanvanderwiel.blogspot.nl



Cut a 15 x 15 cm single-fold card and a 9.5 x 13 cm square from ice blue card. Cut 14.5 x 14.5 cm and 9 x 12.5 cm white card and 14 x 14 cm and 8.5 x 12 cm design paper. Ink around the edges of all paper layers. Adhere them together.

Attach the lace and silk lace with sticky tape. Add the image and fix the bow with a brad.

Die cut the shoes and tab. Add scrap flowers and branches to complete.



Cut a 15 x 15 cm single-fold card and a 5 x 15 cm rectangle from mango-coloured card. Cut 14.5 x 14.5 cm and 4.5 x 15 cm white card and 14 x 14 cm and 4 x 15 cm design paper. Ink around the edges of the cards. Stick the layers together.

Adhere the image to a die-cut square and mat on mango card, trim leaving a narrow border. Stamp the text.

Attach the bow with a brad. Add die-cut feet and scrap flowers to complete.



Cut a 15 x 15 cm and 12 x 12 cm mouse grey single-fold card. Cut 14 x 14 cm and 11 x 11 cm white card and 13.5 x 13.5 cm and 10.5 x 10.5 cm from design paper. Ink around the edges of the cards. Adhere the layers together.

Add the lace and silk lace with sticky tape. Adhere the image and fix the bow with a brad.

Die cut the shoes and tab. Add scrap flowers to complete.

Happy Birthday

By Neline Plaisier
neline-mycardcreations.blogspot.nl



Cut a 10 x 17 cm single-fold card from kraft card. Cut 9.25 x 16.25 cm from design paper, mat on white card. Cut two 9.25 x 5 cm strips from design paper. Cut a decorative border along one strip (see photo). Stamp a text (CS0881) with Hero Arts ink cup a joe.

Layer ribbon across the card, tie into a bow and attach a charm. Die cut CR1248 (circle) from white card, embroider with back stitches. Cut an 8.3 cm Ø circle from design paper. Die cut CA3110

(party number 1) from kraft and purple card. Die cut COL1347 (party number 1) from purple card, punch a hole and tie to large number 1. Die cut LR0160 (cupcake) from kraft, carnation white, pearly white, moss green and lilac card.

Stamp DDS3301 (baby), colour in, cut out and layer onto card, raised with 3D-tape.

Cut PP1401 (balloon) from design paper, kraft and purple card.

Add roses to complete.



Cut a 13.5 x 13.5 cm single-fold card from kraft card. Draw a vertical line at 6 cm in from the fold. Lay CA3111 (party number 8) against the right-hand side of the card. Trace the number and cut out as per example.

Card front: cut 5.25 x 12.75 cm from design paper, mat on pearly white card. Cut 5.25 x 3.25 cm design paper. Layer a piece of lace across the width of the card.

Die cut LR0160 (cupcake) from kraft, carnation white, pearly white, moss green and purple card.

Die cut PP1401 (balloon) from kraft, purple and carnation white card. Die cut COL1347 (party

number 8) from purple card.

Stamp the text (CS0883) onto design paper with Hero Arts ink cup a joe. Cut into a banner, punch a hole and tie on a charm. Stamp DDS3329 (dancing Daisy), colour in, cut out and attach, raised with 3D-tape.

For the inside: cut 12.75 x 12.75 cm from design paper, mat on pearly white card. Layer a piece of lace across the width of the card. Cut out a cup from the design paper and stick to the card, raised with 3D-tape.

Add roses to complete.



Cut a 16 x 12 cm top fold card from kraft card. Cut 11.25 x 14.75 cm from design paper, mat on pearly white. Cut a decorative 11.25 cm wide strip from design paper.

Die cut CR1251 (Tiny's hearts) from kraft card. Cut a 6.5 cm Ø circle from design paper, mat on the purple scalloped circle. Die cut COL1322 (cake) from kraft, carnation white and blossom card and from snowpaper. Die cut CA3110 (party numbers M) from kraft

card and design paper. Die cut COL1347 (Party number 4) from purple card, punch a hole. Stamp a text (CS0883) onto design paper with Hero Arts ink cup a joe. Cut into a banner. Punch a hole and tie it together with the small number 4 to the large number 4. Die cut PP1401 (balloon) from kraft card and design paper. Stamp DDS3306 (sweet Daisy), colour in, cut out and layer to card raised with 3D-tape.

RED, BLUE AND WHITE Train

By Wilga van 't Zelfde
mypaperpasion.blogspot.nl



Cut three rectangles: 12 x 16 cm Christmas red, 11.5 x 15.5 cm white and 11 x 15 cm design paper. Adhere together.

Cut two 4.5 x 15.5 cm strips from design paper. Cut a V-shape into one of them. Mat one strip on night blue card. Layer the strip onto the base card.

Die cut the stars from design paper. Mat them on white and blue card. Stick to the card raised

with foam tape. Die cut the film strips from white card, layer night blue behind and attach to card raised with foam tape. Die cut the train from ice blue and white. Work the blue one with distress ink. Stick to the white train, but with a narrow white border still visible. Then layer them onto the card.

Stamp a postage stamp and texts and add small stars to complete.



Decorate the door hanger with design paper. Die cut the film strip from white card, mat on night blue and layer onto the bottom part of the door hanger.

Die cut the text from white card and stick below the film strip.

Die cut the train from white and ice blue card. Work the blue one with distressinkt. Stick to the

white train with a narrow white border still visible.

Die cut three balloons from design paper. Adhere to door hanger as shown.

Die cut the star from design paper, mat on white card and stick in upper right-hand corner.

Add a few stars to complete.



Cut a 24.4 x 28.9 cm white pearly card and a 24 x 28.5 cm one; score all side at 4 and 8 cm. Cut out the pattern and fold the box. Cover with design paper.

Die cut eight circles from ice blue paper. Divide them in four quarters by folding them twice. Cut one fold in and fold a triangle, stick these to the corners.

Cut two 1 cm wide strips from night blue card and stick around the 'suitcase' as shown.

Cut a 3 cm wide strip from design paper, score at 1 and 2 cm lengthwise. Fold in half. Fix both ends

to the top of the suitcase with brads, creating a handle. Tie a charm, bells and label with the word Toys to the handle.

Die cut an oval from Christmas red and pearly white. Adhere together and then on both sides of the suitcase. Die cut the train from ice blue and pearly white, work with distress ink. Adhere together, but with a narrow white border still visible. Die cut the text from white card and stick to other oval.

Fill the suitcase with toys.

