

# The Collection #20



CREATABLES

## Windows

By Astrid Schipper  
astridschipper.blogspot.nl



Cut a 15 x 15 cm light brown single-fold card and two panels: carnation white 14.5 x 14.5 cm and blue design paper 14 x 14 cm. Tear two corners of green design paper. Work all panels with distress ink pumice stone and adhere together. Die-cut/emboss the window from carnation white card and layer onto slightly larger dark brown. Cut

the central part from the light brown card. Die-cut the bricks from light brown card and glue the window and bricks onto the card. Die-cut the snow borders from snow paper and adhere. Cut out the picture and adhere to the window as shown; make the picture 3D. Add twigs, flowers, stars, a bow and a charm to finish.



Cut a 15 x 18 cm light brown strip and score at 2 and 4 cm. Cut two panels: carnation white 14.5 x 14.5 cm and blue design paper 14 x 14 cm. Cut three strips: light brown 15 x 9 cm, carnation white 14.5 x 8.5 cm and green design paper 14 x 8 cm. Emboss the wall onto light brown card, die-cut separate bricks from brick red card and adhere to the wall. Work all panels with distress ink pumice stone and adhere together. Die-cut/emboss the window onto carnation white card

and adhere to the small strip; cut out the windows. Die-cut the snow borders from snow paper and adhere to the window. Cut a 10 cm Ø circle and emboss the dots; adhere circle and picture to the centre of the card. Stamp the sentiment, trim and adhere to the card, add holly twigs and flowers. Affix the strip to the card. Cut out the picture, adhere to the window and make 3D. Add stars, a bow and a charm to finish.



Cut a 15 x 15 cm light blue single-fold card and two panels: carnation white 14.5 x 14.5 cm and blue design paper 14 x 14 cm. Work all layers with distress ink pumice stone and adhere together. Emboss the dots onto a carnation white 12 x 12 cm square. Die-cut/emboss the window from light brown card. Adhere the panel, window and

picture to the card. Die-cut snow borders from snow paper and adhere to the windows. Cut out the picture and die-cut green Christmas trees; glue them in front of the window. Stamp the sentiment onto carnation white card and trim. Add twigs, flowers, stars, a bow and a charm to finish.

ELEGANT

## Design Folders

By Anja van Laar  
anjavanlaar.blogspot.nl



Cut a 14 x 14 cm grey single-fold card. Layer 13.5 x 13.5 cm design paper to the front and back panel. Emboss the pattern onto a panel of white recycled paper using embossing folder DF3405. Tear off the borders and adhere a piece of lace on the left-hand side. Cut a 12.5 x 12.5 cm panel from kraft card and work with a rib maker. Work the edges with gesso. Layer it to the card at a slant. Adhere the white card using foam tape; add the

fence on the right-hand side and a piece of bandage on the left. Affix the French lily to the top and add a 3D picture. Cut a 13.5 x 4.5 strip of design paper and glue it down on the bottom of the inside forming a pocket. Add a die-cut fence and insert a label of design paper and a die-cut one (CR1254). Thread a length of ribbon/tulle through the hole and tie together with rope.



Cut a 14 x 14 cm grey single-fold card. Layer 13.5 x 13.5 cm design paper to the front and back panel. Emboss the pattern onto a panel of white recycled paper using embossing folder DF3405. Punch a border along the right-hand side. Die-cut the flower border from grey card. Adhere the layers

to the card using foam tape. Cut a piece of bandage and layer behind the picture; then make the picture 3D. Add dots using a pearl pen. Adhere a 0.5 cm strip of design paper on the left-hand inside and a white die-cut flower border on the right-hand side.



Cut a 21 x 10.5 cm mouse grey single-fold card. Adhere pieces of design paper to the front panel. Die-cut/emboss the oval from grey kraft card using LR0272, cut in half and adhere. Cut a 10 x 13 cm white recycled panel and emboss using embossing folder DF3406. Adhere pieces of lace across top and bottom. Layer pieces of bandage behind two sides and adhere using foam tape. Add a 3D picture and make dots with a pearl pen.

Die-cut two fences from design paper and glue to the bottom on the inside as a fan. Die-cut a flower border along a long strip of kraft card, replace the Creatable a few times to create a 21 cm strip. Adhere it to the right-hand side of the back panel.

## CHOCOLATE Collectables

By Neline Plaisier  
[neline-mycardcreations.blogspot.nl](http://neline-mycardcreations.blogspot.nl)

General instructions:

- Leave the card in the die after die-cutting and apply distress ink: recycled kraft and carnation white card: vintage photo; blossom card: Victorian velvet and dark brown card: black soot.
- Apply vintage photo to the edges of the design paper.
- Use the medium size flower of COL1323 (flower set).



Cut 25 x 12.5 cm recycled kraft card; score at 12.5 cm and 18.75 cm, measured from the side. Fold the card as shown. Cut 12.5 x 12.5 cm recycled card, adhere to the folded square.

For the upper part of the card:

Cut 11.75 x 11.75 cm design paper and mat on pearly white. Cut 12 x 3 cm design paper, layer lace and paper tape across the card. (Repeat this on the lower part of the card.) Die-cut LR0141 from pearly white card and cut a 7.5 cm Ø circle from design paper. Die-cut COL1367 from recycled kraft card. Die-cut COL1365 and COL1366 from

carnation white, blossom, dark brown and nut brown card.

For the lower part of the card:

Die-cut CR1254 (label) and LR0326 from recycled kraft card. Die-cut LR0326 from pearly white; COL1365 from blossom, carnation white and nut brown card. Stamp the text with Hero Arts ink; tie a length of rope to the label. Die-cut CR1248 (leaves) from moss green, LR0271 from pearly white and COL1323 from blossom card. Complete the card with adhesive pearls and organza flowers.



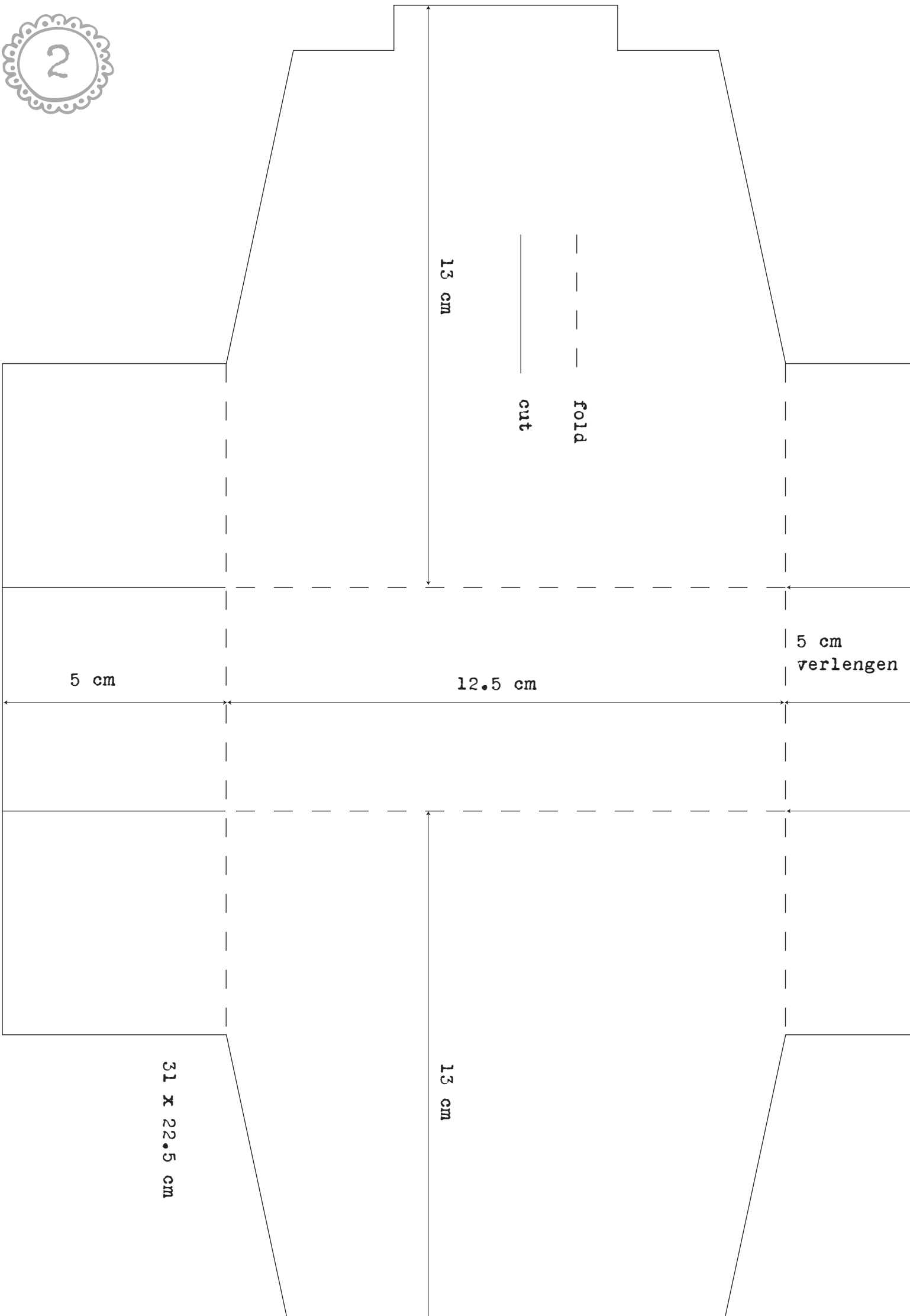
Copy the pattern of the bag onto recycled kraft card, cut out and assemble. Layer design paper matted on white card, on the sides. Die-cut LR0141 from pearly white card and cut a 7.5 cm Ø circle from design paper. Stamp the text with Hero Arts ink. Die-cut COL1365 from blossom, nut brown and dark brown card. Die-cut COL1323

from moss green, COL1323 and LR0192 from blossom and LR0151 and LR0192 from pearly white card. Die-cut LR0325 (bow) from pearly white card and design paper. Decorate the bow with an adhesive pearl and the bag with organza flowers and paper tape. Fill the bag with chocolate.



Cut an 11 x 16 cm single-fold card from recycled kraft card. Cut 10.25 x 15.25 cm design paper, mat on pearly white card. Cut 7 x 10.25 cm design paper. Cut 9 x 10.25 cm pearly white card, and work with Design Folder DF3402. Cut 7.5 x 10.5 cm design paper, mat on pearly white card and stamp the text with Hero Arts ink. Adhere paper tape across the card. Die-cut LR0270 and

COL1367 from recycled kraft card; die-cut the latter from design paper too. Cut out the bow. Die-cut LR0326 from design paper; CR1248 from moss green and COL1323 from blossom card. Die-cut COL1365 from blossom, carnation white, dark brown and nut brown card. Complete the card with an adhesive pearl, organza flowers and paper tape.



2

13 cm

cut

fold

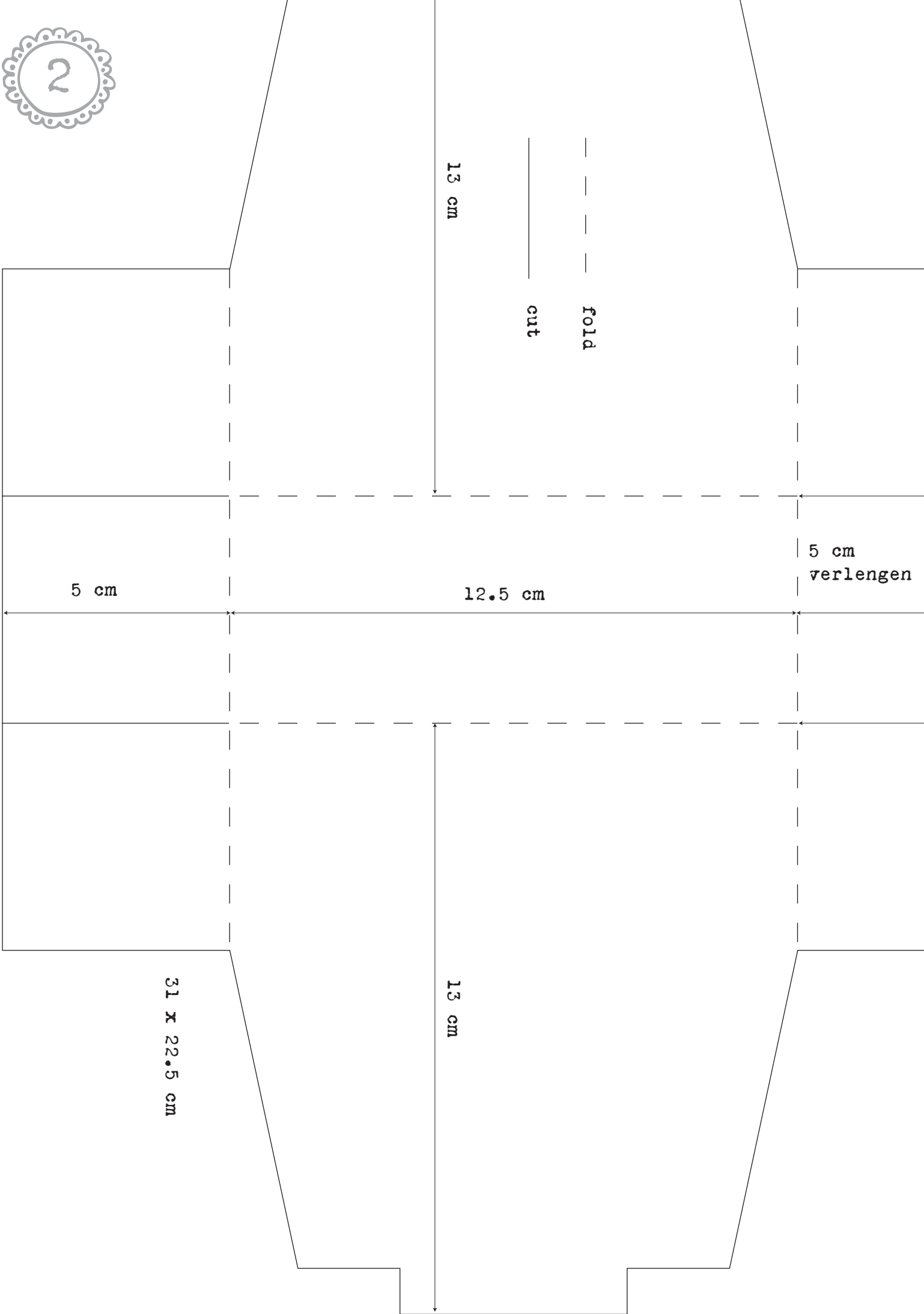
5 cm

12.5 cm

5 cm  
verlengen

31 x 22.5 cm

13 cm



## SPECIAL DELIVERY

# Snail Mail

By Sanne Rongen  
[scrapcardsandstuff.blogspot.nl](http://scrapcardsandstuff.blogspot.nl)



Cut an 11 x 15 cm white single-fold card. Round off the corners on the bottom of the card using a corner punch. Cut an 11 x 6 cm strip from design paper and punch the corners too; then adhere to the card. Wrap a doily around the paper bag and adhere it to the card. Tear off a length of paper tape and adhere to the bag. Tie silk lace to a label and put into the bag. Affix a bow of twine. Stamp

the sentiment onto the mini-label and hang it on a line of twine using a tiny peg. Die-cut COL1364 (snail) from design paper. Adhere the parts to the bag using 3D-foam tape. Affix the joggle eyes to the snail. Add a sentiment and wooden stars to finish.



Cut an 8 x 16 cm label from craft card; work with modelling paste and a template. Stamp a sentiment onto design paper and die-cut with CR1223 (stamp). Staple the sentiment to the label at a

slant. Affix the felt exclamation mark. Attach paper tape to the label using jute twine and silk lace.



Cut a 12 x 12 cm white panel and work with an embossing folder. Adhere to a 12.5 x 12.5 cm panel of craft card. Tear a piece of book paper and adhere to the card. Cut a 9.5 x 9.5 cm panel from design paper and stamp the sentiment. Fold the corners of the paper in a decorative way and

adhere to the card. Affix a paperclip in the top corner. Staple a length of kitchen rope to the card as shown. Adhere the panels to a 13 x 13 cm beige panel and then onto a 13.5 x 13.5 cm light blue single-fold card. Add wooden stars to finish.

## ADHESIVE FOIL

# Christmas

By Wilga van 't Zelfde  
[mypaperpasion.blogspot.nl](http://mypaperpasion.blogspot.nl)



Cut 12.5 x 17 cm Christmas red, 12 x 16.5 cm nut brown and 11.5 x 16 cm design paper. Adhere together. Use a fine liner to draw a line along the border of the card. Cut two strips: 4.5 x 10 cm nut brown and 4 x 9.5 cm design paper; cut a V-shape into one short side and attach to the card as a banner. Attach the doily. Die-cut the straight heart from Christmas red and nut brown. Die-

cut the filigree heart from moss green and gold-coloured foil. Cut out the angel. Adhere the layers together as shown, and then attach to the card with foamtape and rope. Die-cut the twigs and ivy from moss green and nut brown and the roses from design paper. Finish off the card with a text and adhesive pearls.



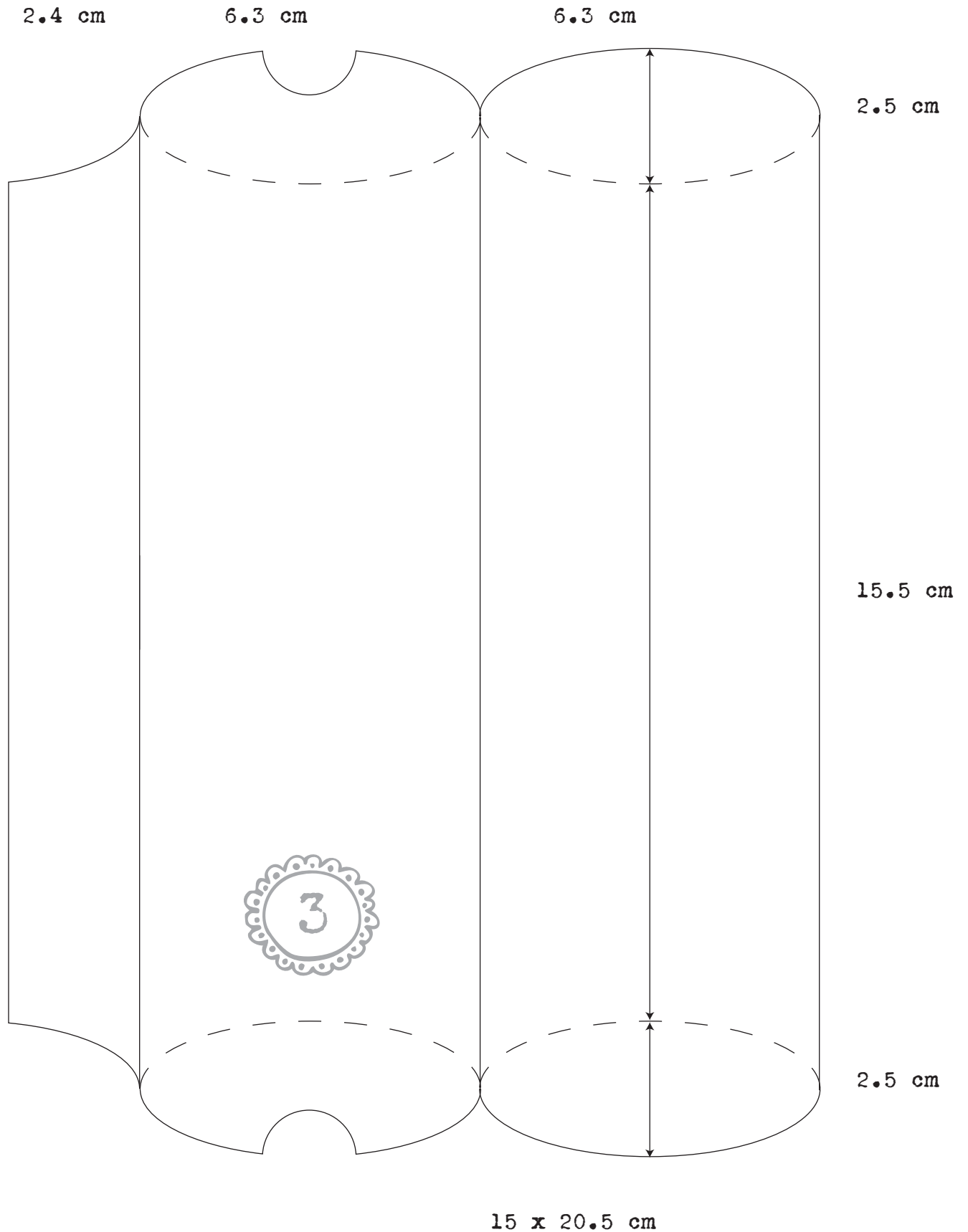
Cut 16 x 16 cm Christmas red, 15.5 x 15.5 cm nut brown and 14.5 x 14.5 cm design paper. Adhere together. Cut two red strips from design paper. Attach to the card with rope in between. Die-cut the Xmas text from moss green and adhere. Use a fine liner to draw a line along the border of the card. Die-cut the straight star from Christmas

red and moss green. Die-cut the filigree star 2x from gold-coloured foil. Adhere to moss green and Christmas red and cut off along the edges. Layer them onto the straight stars and then with foamtape onto the card. Finish the card off with adhesive pearls and stamp a text.



Copy the pattern of the box onto nut brown card and fold/paste together. Wrap a strip from moss green card and design paper and wrap around the box as a banderole. Tie baker's rope and tulle around the box. Die-cut the filigree stars from gold-coloured foil, and the straight stars from

Christmas red and moss green card, adhere together and then onto the banderole. Die-cut ivy and twigs from moss green and nut brown card and the roses from design paper. Attach with a bell.



# Extra

By Wybrich van der Roest  
[wybrichspapercards.blogspot.com](http://wybrichspapercards.blogspot.com)



Cut a 13,5 x 13,5 cm top-fold-card from kraft card. Cut 8 x 12,5 cm and 11,5 x 11,5 cm design paper and mat on pearly white. Emboss the chicken-wire onto pearly white card and die-cut the shape from design paper too. Attach the die-cut hexagons onto the embossed ones and cut into a 5 x 12 cm strip. Die-cut a circle from design paper. Stamp a text with Versafine watermark ink

and emboss with black embossing powder. Mat the circle on a pearly white one and one die-cut from kraft card with the Craftable. Attach the circles partially behind the strip of chickenwire. Tie wax cord through a button and adhere to the strip. Cut out images and make 3D. Tie wax cord around the rubber ring. Die-cut flowers from design paper and secure with a brad.



Cut a 13,5 x 13,5 cm top-fold-card from kraft card. Cut 12,5 x 12,5 cm design paper and mat on pearly white card and design paper. Emboss the bricks onto pearly white and die-cut into a circle. Die-cut bricks from design paper too and attach a few to the embossed ones. Die-cut two trees from kraft card and two from design paper. Cut off the

leaves from the kraft trees; adhere the bare kraft trees on top of the ones from design paper. Then attach the two trees partially overlapping. Die-cut and emboss a fence from kraft card. Cut out the images and make them 3D. Thread wax cord with a charm through the button and adhere to the circle.



Cut a 13,5 x 13,5 cm top-fold-card from kraft card. Cut 12 x 12 cm design paper and mat on red design paper. Cut 10 x 10 cm design paper and mat on pearly white. Cut out images and make 3D. Emboss chickenwire onto kraft card and cut into a 5,5 x 9 cm label. Die-cut chickenwire from design paper too and adhere the hexagons to the

embossed ones. Tie wax cord through the label. Die-cut flowers from design paper, attach a brad and tie wax cord with a charm around the flower. Adhere to label. Die-cut flowers from design paper. Thread wax cord through the button and add to flowers.