

The Collection #22



VINTAGE MEN

Design Folders

By Tineke van der Linden
tinekeskaartenhoekje.blogspot.nl

General:

Ink around the edges of the design paper using distress ink.

After die-cutting/embossing leave the shape in the die and swipe with an inepad.

Attach the wheels of the car with brads.



Cut a 14.5 x 14.5 cm moss green single-fold card and a 13.9 x 13.9 cm pearly white square. Cut 13.6 x 13.6 cm design paper. Cut out the pictures from the decoupage sheet and adhere onto the card using foam tape. Die-cut DF3407 from black card

and adhere onto the card, add the die-cut scraps too. Die-cut the silhouette from light blue card and black kraft card and decorate the hat with Inka gold. Work the gears with rusty paper roset ink and finish off the card with rope and a charm.



Cut a 14.5 x 14.5 cm dark brown single-fold card and a 13.9 x 13.9 cm silver grey square. Cut design paper into 13.6 x 13.6 cm and 11.5 x 11 cm. Cut 12 x 8 cm dark brown card; emboss with DF3407 and work with Inka gold. Die-cut the VW beetle from design paper and the banners from silver grey

card. Cut out the pictures from the design paper and decoupage sheet. Work the gears with embossing powder. Stamp the sentiments onto the banners and finish off the card with a film strip.



Cut a 16.5 x 12.5 cm single-fold card from black kraft card and a 15.4 x 11.9 cm square from white kraft card. Cut design paper into 15.1 x 11.6 cm and 11 x 8 cm. Cut 12 x 9 cm vellum and emboss with DF3407. Die-cut DF3407 from black kraft card and work with Inka gold. Die-cut the silhouette

and the shield from black and white kraft card and adhere together. Die-cut the gears from black kraft card and work with embossing powder. Stamp the sentiment and add a few scraps from DF3407 to the card.

DECOUPAGE SHEETS

A men's world

By Anja Zom
anjazomkaartenblog.blogspot.nl



Cut a 14 x 14 cm night blue single-fold card. Cut pearly white card into 13.5 x 13.5 cm, 7.5 x 12.5 cm and 7.7 x 8.4 cm. Cut design paper into 13 x 13 cm and 7 x 12 cm. Cut out the picture from the decoupage sheet. Adhere the layers together with a length of rope in between; attach to the card creating a pocket. Cut two night blue 2 x 6.5 cm strips for the epaulets and cut the tops into a

point. Die-cut the Tire Track from pearly white card and add small die-cut parts as stripes. Die-cut a label with from pearly white card and die-cut the mini-alphabet from night blue. Create a sentiment on the label. Finish off the card as shown.



Cut a 14 x 14 cm night blue single-fold card and 13.5 x 13.5 cm and 6 x 14 cm pearly white card. Cut design paper into 13 x 13 cm and 5.5 x 14 cm. Adhere the strips to the design paper, fix the eyelets and tie a rope through them. Layer onto the card. Cut out the picture. Die-cut the tie and letters from night blue card and the collar from

white card. Die-cut a 3.3 x 12 cm pearly white strip, apply distress ink to the die of DF3407 and emboss the strip. Adhere the layers to the card. Finish off the card with a bow and rope tied into a bow.



Cut a 14 x 14 cm dark brown single-fold card and a 7.5 x 14 cm strip. Cut 13.5 x 13.5 cm carnation white card. Cut design paper into 13 x 13 cm and 7 x 14 cm. Adhere the layers together with a piece of rope in between. Die-cut DF3407 and mount onto the card slantwise. Die-cut/emboss the laptop from dark brown card and work the keyboard

with a white inkpad. Die-cut the screen from design paper and stamp the icons with a black inkpad. Die-cut/emboss CR1292 from design paper. Adhere the laptop, mouse and tie to the card and finish off with a charm and two tiny buttons.

WINTER WONDERLAND

Craftables

By Marjolein Wormsbecher
magnificentmagnolias.blogspot.nl

General

Ink around the edges of the die-cut shapes using distress ink.



Fold kraft card into a top-fold card and round off the corners. Cut 13 x 13 cm design paper and round off the corners too. Cut from kraft card: two twigs, the hanging and standing bird feeders and the largest circle, foot and border of the snow globe. Cut from mica a circle slightly smaller than the background of the snow globe and emboss with the embossing machine. Layer the mica behind the border of the snow globe. Cut a nar-

row strip of 3D-tape the size of the border of the snow globe and cut in each 0.5 cm, then add it to the border with the mica. Cut out a large round picture from decoupage sheet IT573 and adhere onto the large circle of the snow globe. Sprinkle holographic glitter in the centre of the picture and add the border with the mica on top. Finish off the card as per example.



Fold kraft paper into a top-fold card and round off the corners. Cut 13 x 13 cm design paper and round off the corners too. Die-cut from kraft paper: pine cones, a 7 cm Ø circle, two bird feeders (CR1290 and CR1291) and the banner (COL1325). Add a length of vintage lace. Cut out the picture

and adhere onto the circle. Mount the circle onto the card using 3D-tape. Decorate the card with the die-cut shapes. Stamp the sentiment onto the banner using Versamark ink and work with white embossing powder. Finish off the card with white flat-backed pearls and glitter snow.



Fold kraft paper into a top-fold card and round off the corners. Cut from kraft paper: the bird feeder (CR1291), a circle (CR1248), a corner for the winter sentiment (COL1341) and an 8.5 x 8.5 cm square to adhere it onto. Cut design paper into 13 x 13 cm and 8 x 8 cm. Adhere the large square onto the base card and the small one onto

the kraft square and then onto the card front. Stamp the winter sentiment onto the corner of the kraft paper using Versamark ink, and work with white embossing powder. Adhere as per example. Cut out the picture, adhere to the die-cut circle and then onto the card using 3D-tape. Finish off the card.

Snowfun

By Sigrid Klingenberg
sigridklingenberg.blogspot.nl



Cut 27 x 13.5 cm kraft card and score at 6.75 cm and 2.25 cm. Cut four 5.75 x 12 cm rectangles from design paper and adhere onto four 6.25 x 13 cm carnation white ones; layer to the inside and outside of the side panels. Adhere 12.5 x 12.5 cm design paper onto 13 x 13 cm white card and then inside the card. Cut a 12.5 x 4.5 cm strip and



Cut two 9.5 x 12.5 cm carnation white rectangles. Cut three 8.5 x 11.5 cm rectangles from design paper; layer them onto three 9 x 12 cm kraft paper ones. Layer 35 cm ribbon across the centre on the outside of one of the carnation white rectangles. Then mount the before mentioned rectangles on top. Cut 26 x 8.5 cm kraft paper and score at 7, 13 and 19 cm; fold as per example. Add the strip to the centre of the rectangles, on the border of the design paper. Cut two 6 x 7.5 cm rectangles from

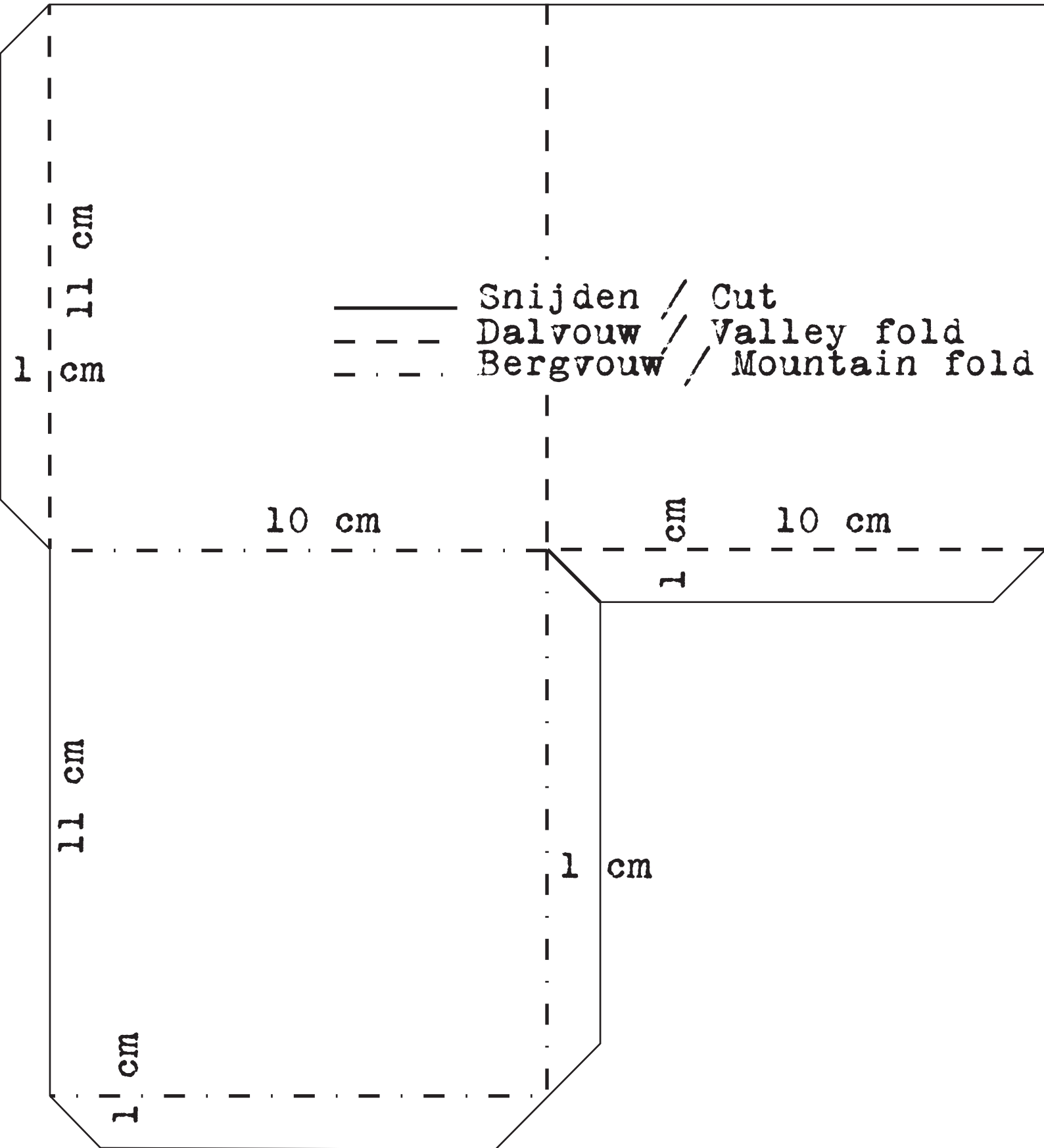


Copy the pattern onto an A4 carnation white sheet. Layer 10 x 9 cm design paper and 10.5 x 9.5 cm kraft paper onto the card front. Add the following layers: 8 x 6 cm light blue, 4 x 7.5 cm dark blue and 9.5 x 2.5 cm medium blue. Die-cut CR1294 from carnation white card. Cut two 9.5 x 11.5 cm tags from kraft paper. Cut an 8.5 x 11 cm tag from design paper, cut off the top corners slantwise. Layer to carnation white and trim leav-

adhere as per example. Die-cut CR1293 twice from carnation white and layer onto the front of the side panels. Cut out the panels following the lines of the die-cut shapes. Die-cut COL1362 from carnation white card and brown design paper. Stamp an image onto the brown design paper and adhere onto the card. Finish off the card.

design paper and layer onto 6.5 x 8 cm carnation white ones. Layer two 5 x 7.5 cm rectangles from design paper onto 5.5 x 8 cm carnation white ones. Add to centre of the card. Cut 6 x 10 cm and 1 x 12.5 cm design paper for the card front. Stamp the image onto 7.5 x 6 cm carnation white card; mat on blue design paper; add to card front. Stamp CS0905 onto 6 x 6.5 cm carnation white; adhere to inside of card. Die-cut CR1294 from carnation white card. Finish off the card.

ing a 2 mm border. Layer onto the tag. Cut 9.5 x 2.5 cm, 4 x 8.5 cm and 4.5 x 6 cm from design paper and layer onto the tag. Adhere onto the card and stamp the image. Layer 10.5 x 8.5 cm design paper and 11 x 9 cm carnation white onto the tag. Add 10 x 2.5 cm, 4 x 8 cm and 5.5 x 5 cm design paper. Cut 1.8 x 9.5 cm kraft paper, stamp the winter sentiment. Layer to tag; round off the corners. Finish off the card.



Dickens Style

By Irma de Vries
irma-scrapkaarten.blogspot.com



Cut a 27 x 13.5 cm dark brown strip, score at 6.7 cm and 13.5 cm, fold into a card. Cut 13 x 13 cm design paper, 11 x 11 cm dark brown and 10 x 10 cm design paper. Adhere onto the inside of the card. Cut for the outside: 6.3 x 13 cm design paper, 11 x 11 cm dark brown and 4.5 x 10 cm design paper. Stamp an image, colour in and cut into a square. Adhere the layers onto the card with the



Cut two 8 x 16 cm pearly white labels and layer design paper on top. Adhere onto kraft bag slantwise. Die-cut the star from Brilliant champagne and emboss with a Design Folder. Die-cut the star border from mirror card and adhere along the border of the label. Adhere the die-cut star as per example; add stars from the star border random-



Cut 13.5 x 18 cm from kraft card; fold in half lengthwise to create a long narrow card. Cut a 6 x 18 cm ice blue strip and 5 x 15 cm design paper. Cut the latter one at 8 cm and layer both parts to the ends of the ice blue strip. Adhere the layers onto the kraft card. Die-cut Anja's square from design paper and ice blue card. Die-cut a circle into the ice blue part. First layer mica behind, then strips of double sided tape (avoid shaker material falling out). Sprinkle shaker material in the aperture and close with a second mica sheet. The base for a shaker card is always mica, tape,

image on top. Trim the dark brown card around the image, leaving a 0.5 cm wide border. Add to folded part of card. Die-cut the semi circle from Brilliant bronze colour and add to the right-hand top corner. Make decorations with holly twigs, pine cones, jingle bells and poinsettias. Finish off the card with adhesive stars.

ly. Stamp the image, colour in and cut out. Layer the image to design paper, trim leaving a narrow border. Work image with embossing enamel. Die-cut the falling stars border from mirror card and layer onto image slantwise. Add pompon trim along the bottom. Layer design paper onto a wooden peg and finish off with jingle bells.

shaker material and mica again. Add the cardtopper to the mica, facing the shaker material. Then turn the layers over and add them to the square of design paper and then onto the card. Die-cut the foot of the snow globe from kraft card and adhere under the circle. Die-cut a circular border from design paper and add to the card front around the snow globe. Add pompon trim. Make a decoration with holly twigs, pine cones, falling stars and poinsettias. Cut the remaining circles in half to decorate the inside of the card.

CREATABLES

Dolphins & Ducks

By Neline Plaisier
neline-mycardcreations.blogspot.nl

General:

Distress the edges of the design paper with a paper distresser and the vintage photo inkpad. Swipe the surface of the dolphin and rubber duck after die-cutting with distress ink: eyes dolphin and duck with black soot, ball and wings of duck with vintage photo, splashes with stormy sky and bill with rusty hinge.



Score a sheet of design paper at 7, 9 and 10 cm from the short side (mountain fold, valley fold, mountain fold). Add double-sided tape to one of the short sides and adhere to the back of the long side. Fold the card; the base of the card is a stand now. Cut 12 x 13 cm design paper, mat on carnation white and an 11.5 x 12 cm rectangle. Die-cut the stars from design paper. Cut an 11 x 11.5 cm pearly white rectangle and work with DS3408. Layer gauze partially under the rectangle; add

paper tape to the side. Cut 7.75 x 10.6 cm from stamping paper. Stamp Don using an Archival inkpad and colour in. Work the edges with embossing powder. Die-cut the dolphin from mouse grey, the water splashes from pearly white card and the ball from kraft card. Stamp '#1' onto the stars and stamp the sentiment onto pearly white card using a Stazon inkpad. Trim text into a banner. Create a line of flags using pieces of design paper folded in half.



Copy pattern A onto a sheet of kraft paper. Copy the card front also onto design paper as per example. Trim the edges by 0.25 cm and mat on carnation white. Die-cut from pearly white card: the circle (CR1248), the Chinese rose (LR0163), the twigs (LR0192) and water splashes. Assemble the Chinese rose. Die-cut CR1248 (circle & flower stitch) from moss green card. Die-cut the ball (LR0332) and the stars (DF3408) from kraft paper. Layer a piece of gauze partially behind the

circle. Cut an 8.9 cm Ø circle from stamping paper. Stamp Don with an Archival inkpad and colour in. Work the edges with embossing powder. Mat the circle onto design paper. Die-cut the rubber duck from carnation white and mango card. Stamp the sentiment onto pearly with card, trim into a banner and mat on design paper. Finish off the card front using scrappers rope, paper roses and a flat-backed pearl.

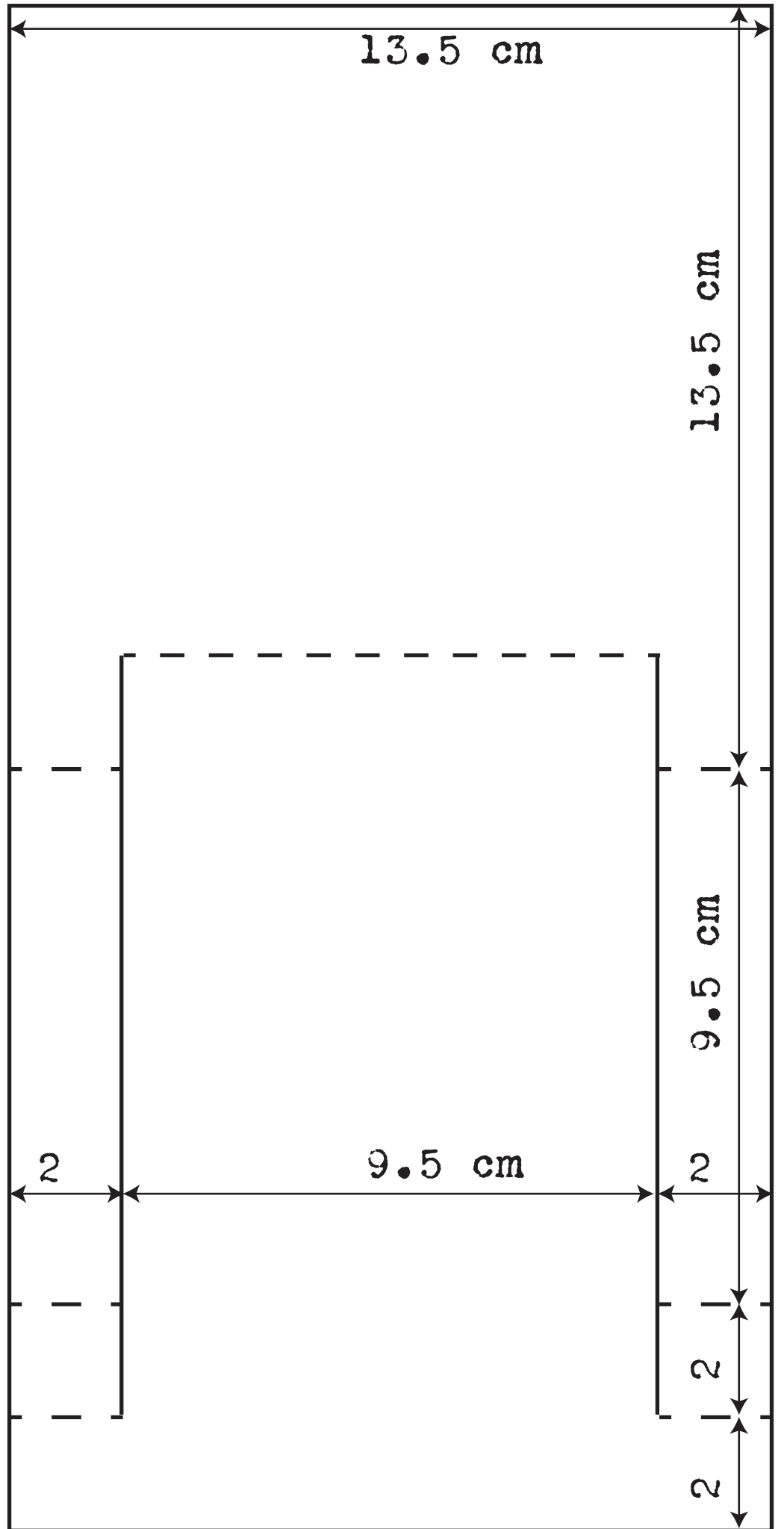


Copy B twice onto recycled kraft card. Assemble the bag. Cut two 8 x 10 cm rectangles from design paper; mat on carnation white card. Adhere to the front and back of the bag. Die-cut from pearly white card: LR0141 (double frame), LR0332 (dolphin) and LR1323 (flower set). Cut an 8.25 cm Ø circle from design paper. Die-cut CR1249 (square & flower stitch) from moss green card and the rubber duck from design paper. Die-cut the duck from design paper too, cut out its wings only; add with 3D-glue. Die-cut the stars from recycled kraft card. Stamp the sentiment with a Stazon

inkpad onto pearly white card; trim into a banner. Decorate the bag using roses and flat-backed pearls. Label: die-cut LR0188 and DF3408 (stars) from recycled kraft card. Die-cut the rubber duck from design paper and mango card. Layer a piece of design paper and paper tape across the label. Stamp the sentiment of COL1314 using a Stazon inkpad. Finish off the card with a label tied with blue silk lace, scrappers rope and a charm, and a present packed in cellophane.



A



13.5 x 27 cm



B

