

The Collection #26



COLLECTABLES

Special Delivery

By Wilga van 't Zelfde
mypaperpasion.blogspot.nl



Cut nut brown card to 14 x 14 cm, pearly white to 13.5 x 13.5 cm and design paper to 13 x 13 cm. Adhere them together.

Cut pearly white card to 12 x 12 cm. Die-cut the picture and keep aside. Work the square with the design folder. Then mount it onto the card raised with 3D-kit/foamtape.

Cut a 1.5 cm wide banner from design paper. Stamp the text and adhere the banner onto the

card.

Die-cut the pregnant lady from nut brown card; layer the pearly white one on top and adhere to the card.

Die-cut the leaves from pearly white and nut brown card, and adhere them to the card together with the rope, the pearl cord and the paper roses, as shown.

Finish off the card with hearts.



Cut nut brown card to 15 x 12 cm, white to 14.5 x 11.5 cm and design paper to 14 x 11 cm. Adhere them together.

Die-cut the postal card from nut brown and pearly white card. Stamp the texts onto the pearly white postal card, as shown. Adhere the postal cards together at a slant and tie a rope

around. Adhere them to the card together with a piece of gauze.

Die-cut the stork with baby from nut brown card and design paper and mount onto the postal card, raised with 3D-kit/foamtape.

Finish off the card with paper roses, die-cut twigs and a charm.



Cut nut brown card to a 14 cm Ø circle and fold in half.

Cut pearly white card to a 13.5 cm Ø semi-circle and design paper to a 13 cm Ø semi-circle. Layer together.

Die-cut the border with hearts from nut brown card and adhere on both sides of the folded circle.

Die-cut three circles: 8 cm Ø from nut brown card, 7.5 cm Ø from pearly white card and 7 cm Ø from design paper. Layer together.

Die-cut two circles: 6.5 cm Ø from pearly

white card and 6 cm Ø from design paper. Layer together and stamp the text. Mount the circles onto the card as shown.

Die-cut the cradle from pearly white card and colour in. Adhere to the card raised with 3D-kit/foamtape and finish off with a bell and piece of tulle.

Die-cut the heart from nut brown card and adhere to the card with paper roses, ribbon and a charm, creating a floral arrangement.

CREATABLES

Little Baby

By Neline Plaisier
neline-mycardcreations.blogspot.nl

General instructions:

Work the white card with DF3414 (Hearts).

Ink around the edges of the design paper and white card using distress ink vintage photo.



Cut a 12.25 x 16.75 cm white single-fold card. Cut recycled kraft card to 11.75 x 16.25 cm and white card to 11.5 x 9.75 cm; work the last one with DF3413 (Hearts). Cut design paper to 11.5 x 10 cm. Die-cut DF3413 from blossom card (keep the hearts aside) and label CR1254 from white and recycled kraft card.

Decorate the white label with a bow, charm, button and pin.

Die-cut COL1334 (Love) from design paper.

Die-cut double frame LRO141 from white card; cut a 6.5 cm Ø circle from the centre. Layer the picture behind.

Die-cut the cradle (LRO347) from white card and

recycled kraft card; work the cradle with distress ink.

Die-cut the smallest size of COL1323 (Flower Set) twice from blossom card and the leaf (CR1249 Square & Flower Stitch) twice from moss green card.



Cut an 11.75 x 17.50 cm white single-fold card. Trim recycled kraft card to 11.25 x 17 cm and design paper to 11 x 7 cm and 11 x 12.25 cm; emboss the last one with DF3413 (Hearts). Sand down the hearts with sandpaper.

Die-cut LR0161 (Lace) from white card.

Layer a length of ribbon and scrapper's rope across the width of the card.

Die-cut DF3413 (Hearts) from a white strip of card, and cut in half.

Use 7 x 10 cm parchment to fold a bag. Adhere a piece of gauze behind the bag.

Trim white card to 6.75 x 10 cm, cut off the top corners slantwise.

Cut out a picture, punch a hole and decorate with ribbon, a pin and a bell.



Cut recycled kraft card to 17 x 30 cm; copy the pattern. Cut, score and fold the lines, stick the bag together. Attach mica behind the oval aperture.

Cut white card to 11 x 10 cm, work with DF3413 (Hearts).

Trim design paper to 11 x 7 cm and layer onto 11.5 x 14.5 cm white card.

Using the pattern draw an oval in the centre of the card and cut out.

Die-cut:

-DF3413 (Hearts) from blossom card;

-LR0348 (Pregnant) from design paper and recycled kraft card.

-COL1323 (Flower Set, smallest size) twice from white card and twice from blossom card.

- CR1249 (Square & Flower Stitch): the leaves

Stamp the text using the Stazon inkpad, and the postage stamp using the Hero Arts inkpad.

Finish off the card with an adhesive pearl, diamond gems (JU0937) and the die-cut hearts.

Die-cut the hearts (DF3414) from white card, kraft card and design paper. Put them in the bag. Die-cut the rocking horse (LR0347) from recycled kraft card and silver grey card; work them with distress ink.

Stamp CS0921 (Patchwork Alphabet) onto design paper using the Stazon inkpad and cut out.

Die-cut CR1212 (Tags & Tickets) from white card and stamp the text using the Stazon inkpad. Mat on a scalloped circle, die-cut from recycled kraft card.

Die-cut the leaf from CR1249 (Square & Flower Stitch) twice from moss green card.

Finish off the card with a bow, pin and two roses.

Stamp the postage stamp with the Hero Arts inkpad.

three times from moss green card.

-LR0271 (Anja's Vintage Swirl) from white card and cut in half.

-DF3414 (Hearts) from design paper.

Decorate the bag with hearts and adhesive flat-packed pearls.

Wrap the romper in cellophane, put a few die-cut hearts inside and close the packaging.

Die-cut the label (LR0188) from recycled kraft card and twice from design paper. Tear the design paper, see example.

Stamp the text with the Stazon inkpad.

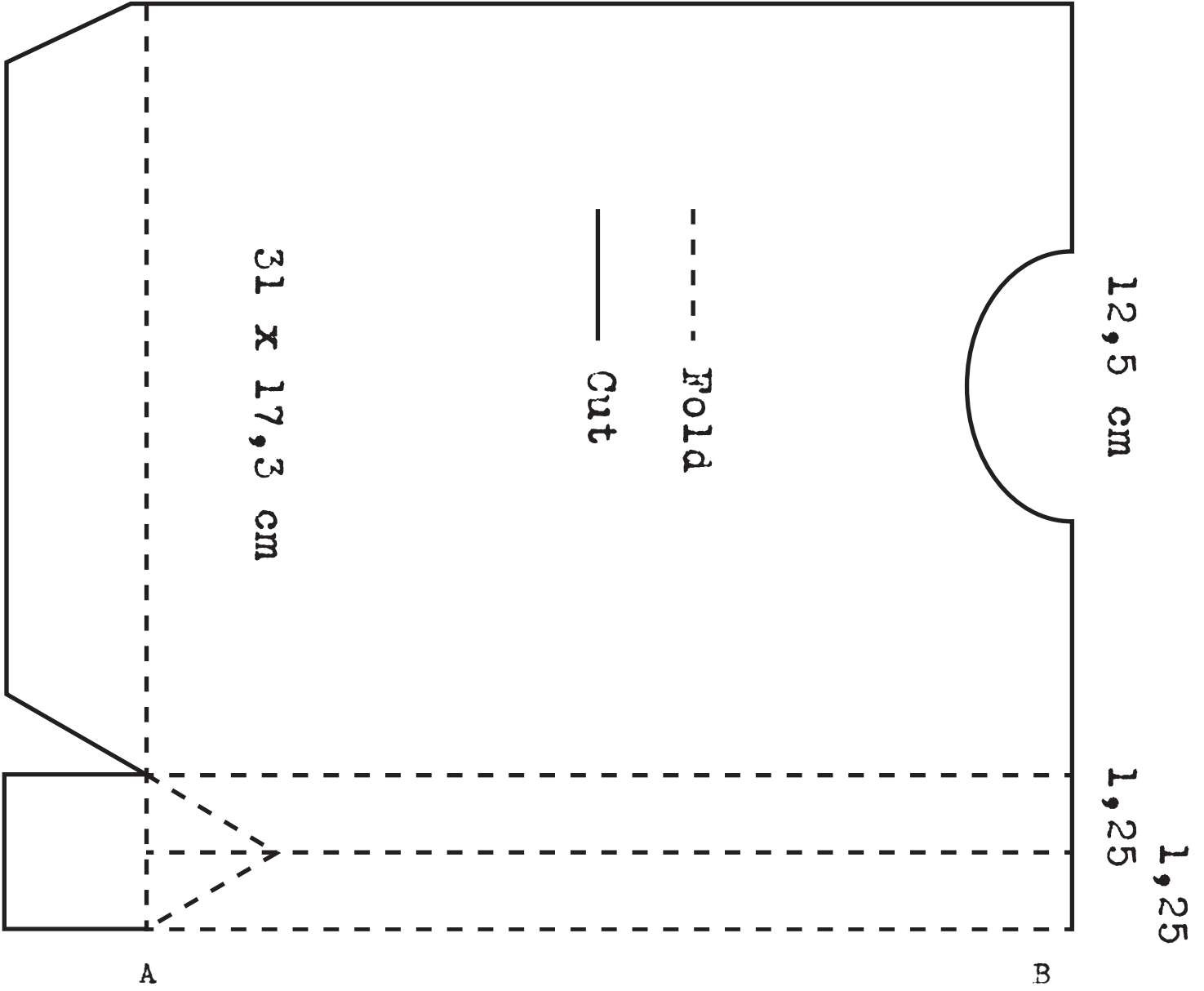
Die-cut the stork with baby (COL1381) from white card and work it with distress ink black soot and rusty hinge.

Finish off the packaging with ribbon and bells.

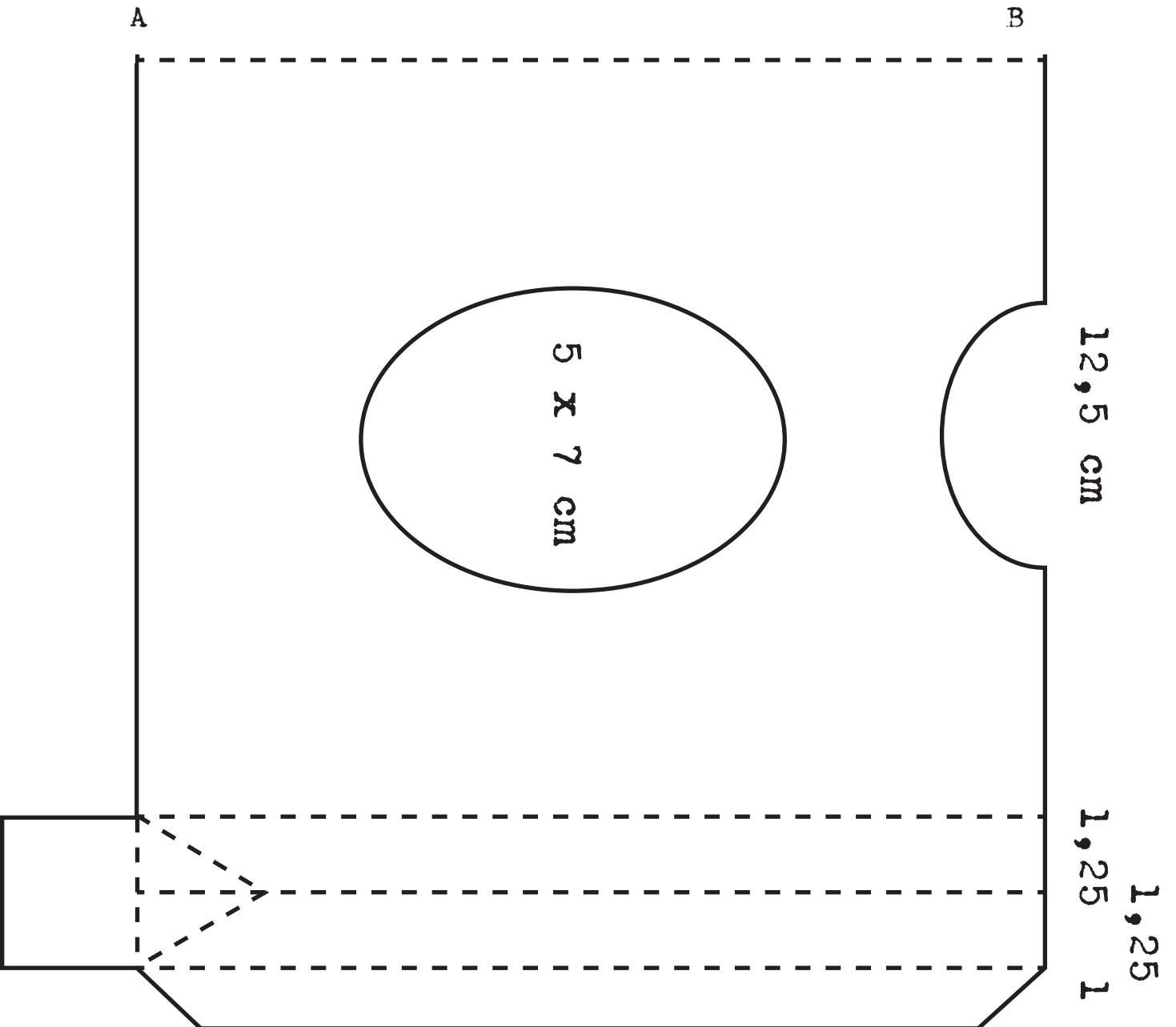


2,3 cm

15 cm



Adhere A and B together



Craftables

By Sigrid Klingenberg
sigridklingenberg.blogspot.nl

General instructions:

Work the edges of the paper with a paper distresser. Then ink around the edges with vintage photo. Die-cut the flowers and leaves from moss green card and colour in with distress ink forest moss, pine needles and walnut stain, to obtain a darker green colour.

Die-cut the flowers from pearly white card and apply distress ink.

Die-cut the leaves from design folder DF3414 a second time to use them for creating a 3D-effect.

Die-cut the flower pots from kraft card and work with distress ink vintage photo, forest moss and pine needles.

Die-cut the garden tools from mat silver-coloured paper first and work a little with distress ink vintage photo. Then die-cut the handles from kraft card, layer them onto the handle of the silver-coloured tool.



Cut design paper to: 8.5 x 8.5 cm, 11 x 11 cm and 13.5 x 13.5 cm. Adhere them to: kraft card 9 x 9 cm and 14 x 14 cm and pearly white 11.5 x 11.5 cm. Then mount them onto a pearly white 14.5 x 14.5

cm single-fold card.

Finish off the card using Collectables, Craftables, a Design folder, charms, adhesive pearls and rope.



Copy pattern A onto 30 x 15 cm kraft card, trim/score all lines as indicated. Cut pattern B twice from design paper and adhere to pearly white card; trim leaving a 2.5 cm border. Cut design paper to 9 x 9 cm and layer onto 9.5 x 9.5 cm pearly white card. Cut six strips from design paper: four times 4 x 1.5

cm and twice 9 x 1.5 cm. Adhere to pearly white card and trim leaving a 2.5 mm border. Mount all layers onto the card.

Finish off the card using Collectables, Craftables, a Design folder, charms, adhesives pearls and rope.

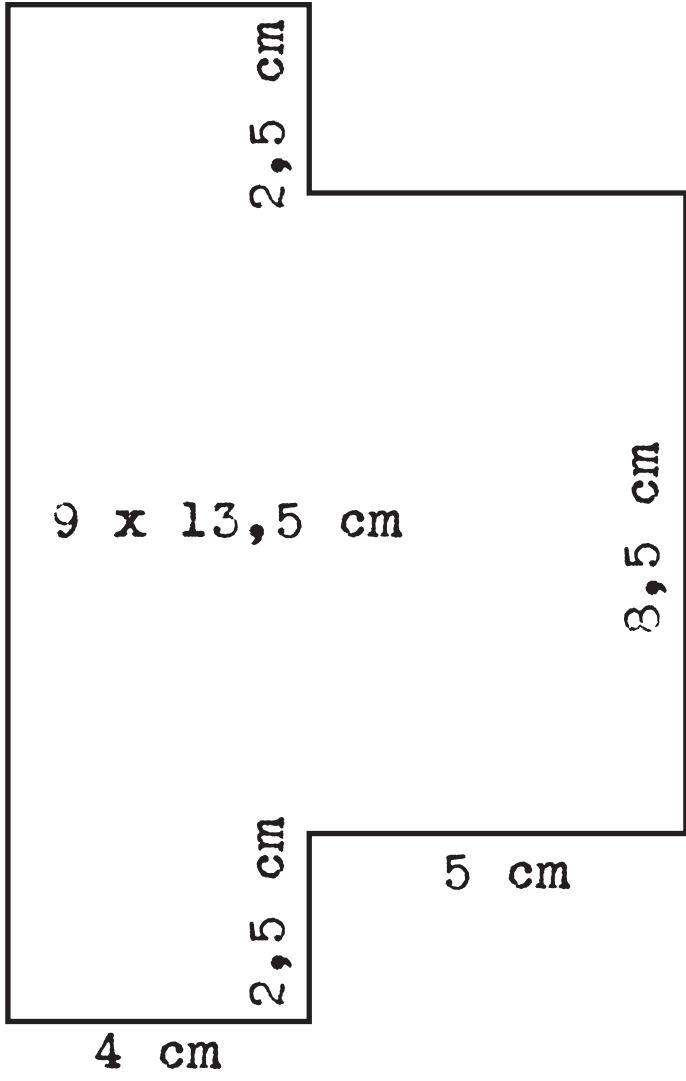


Copy pattern C onto 29 x 14.5 cm kraft card; cut/score the lines as indicated. Cut two 1.5 x 11 cm strips from design paper and adhere to 2 x 11.5 cm pearly white strips. Cut design paper to 8.5 x 12.5 cm and adhere to 9 x 13 cm pearly white card.

Cut an 1.5 x 14.5 cm strip from design paper and adhere to a 2 x 14.5 cm pearly white one. Adhere the layers onto the card. Finish off the card using Collectables, Craftables, charms and rope.



B





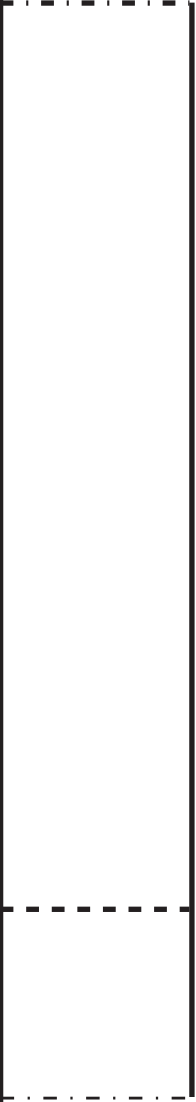
A

12

12

2.5

2.5 cm

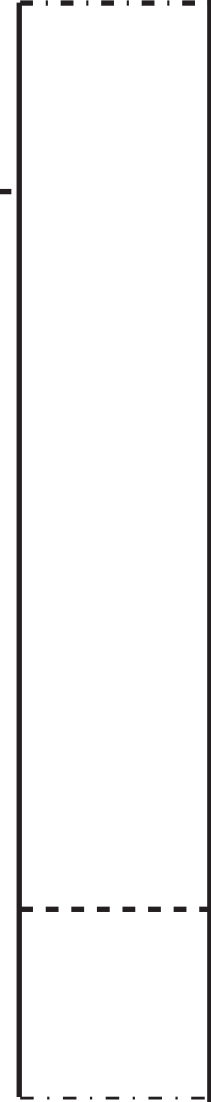


----- Valley fold / Dalvouw

----- Mountain fold / Bergvouw

9 cm

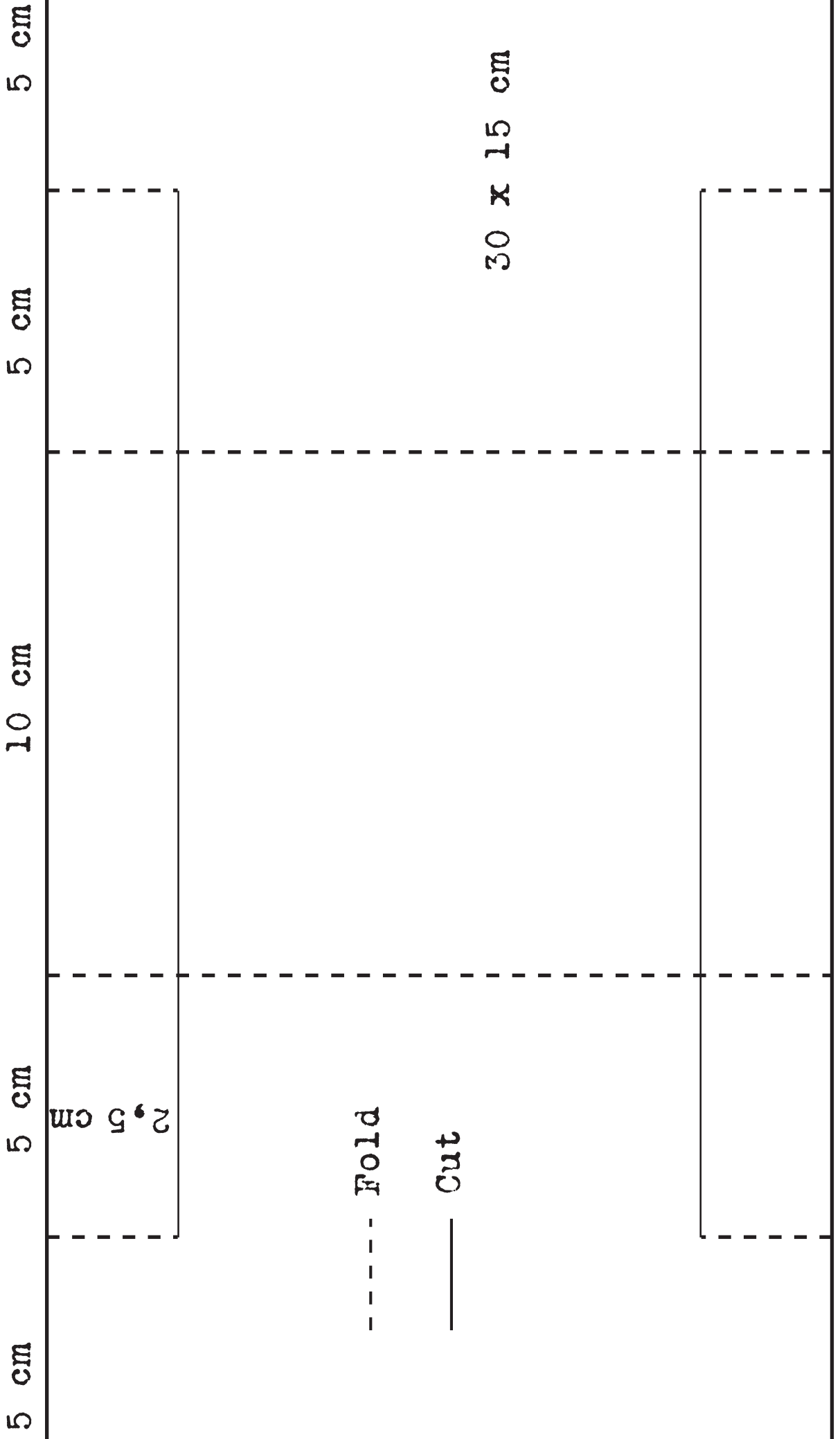
2.5 cm



29 x 14.5 cm



c



Decoupage

By Astrid Schipper
astridschipper.blogspot.nl



Cut a 15 x 15 cm pink single-fold card.
Cut five pieces of card: white 14.5 x 14.5 cm and 11.8 x 11.8 cm, silver grey 14 x 14 cm, pink 12.3 x 12.3 cm and pink design paper 13.5 x 9.5 cm. Ink around the edges with distress ink pumice stone. Adhere the white card and design paper to the card as shown.
Emboss the smaller white card with the design folder and adhere to the card.
Die-cut the twigs from green design paper and

adhere.

Cut a 2 x 16 cm silver grey strip, adhere a length of lace and then mount onto the card.
Cut out the picture and mat on pink card, then mount on to the card together with a feather.
Die-cut the text from pearly white card and ink with distress ink.
Finish off the card with a bow of tulle.



Cut a 15 x 15 cm pink single-fold card and two squares: white 14.5 x 14.5 cm and design paper 14 x 14 cm.
Cut two strips: white 5.5 x 14.5 cm and green design paper 5 x 14.5 cm. Ink around the edges using distress ink pumice stone.
Adhere the layers together with lace on both sides of the green strip.

Cut out the picture and mat on pink card.
Die-cut the lilies from pearly white card and colour them with PanPastel.
Die-cut the text and work with distress ink.
Adhere the lilies, the feather and the text to the card.
Finish off the card with a bow of tulle.



Cut a 15 x 15 cm pearly white card.
Cut three cards and a strip: white 14.5 x 14.5 cm, pink design paper 14 x 14 cm, pink 11.8 x 11.8 cm and green design paper 14.5 x 5 cm. Emboss the pink card with the design folder. Work all cards with distress ink pumice stone; adhere the layers together and add the lace.
Die-cut/emboss the circle from white card and at-

tach the picture with the circle to the card.
Die-cut the twigs, forget-me-nots and the text 'Sending you flowers' from white card.
Work the forget-me-nots and twigs with PanPastel and the text with distress ink.
Adhere the flowers, twigs, a feather and the text to the card.
Finish off the card with a bow and a charm.

Silhouette

By Thea Wildeman
theashobby.blogspot.nl



Die-cut LR0351 from design paper and apply distress ink to the motif while still in the die.
Die-cut LR0349 and LR0350 from nut brown card.
Cut a 14 x 14 carnation white single-fold card.
Cut off 2 cm from the top of the front panel. Ink around the edges with distress ink.
Ink around 13.5 x 13.5 cm design paper and layer on the inside.

Cut 11.5 x 13.5 cm carnation white card and ink around the edges. Layer lace behind the top of the card and adhere to the card front as shown.
Assemble the card as shown.
Adhere the heads with 3D-kit/foamtape to create a 3D-effect.
Finish off the card with the perlenpen and leave to dry.



Cut a 13.5 x 22 cm white strip, score and fold at 1 cm, 6.5 cm and 12.5 cm. Ink around the edges with distress ink.

Cut three 13 x 5 cm strips from heather card and ink around the edges (back part).

Cut a second 13.5 x 22 cm card, also score and fold at 1 cm, 6.5 cm and 12.5 cm, and ink around the edges (front part).

Die-cut LRO353 together with the inner ring from design paper, ink around the edges with distress ink. Place this part with the centre on the second score line and trim off the centre neatly.

Cut 13 x 9 cm design paper, apply ink and adhere to the right-hand side of the front panel.

Adhere 13 x 5 cm heather card to the centre.

Die-cut the heads from LRO349 and LRO350 and

two birds from wine red card.

Adhere the birds together on the sides, to leave an opening to stick the thin wooden saté skewer through. Adhere the skewer with glue exactly in the centre of the open space and trim off the excess wood.

Adhere together the last centimetre of both cards and the right-hand side.

Assemble the card as shown and attach the heads using 3D-glue/foamtape to create a 3D-effect.

Finish off the card with the perlenpen and leave to dry.

When folding the card before placing it in an envelope, the birds on the saté skewer will be lying flat.



Cut a 4 x 14 cm pearly white single-fold card and a 13.5 x 13.5 cm black square.

Die-cut LRO349 from pearly white card.

Leave the card in the die after embossing and apply distress ink Victorian velvet.

Die-cut the heads from raven black card.

Adhere the layers together; the heads with 3D-kit to create a 3D-effect.

Finish off the card with a bow and flowers.

HAPPY EASTER

Collectables

By Marleen van der Most
handmadebymarleen.blogspot.nl



Cut out the pattern of the Easter basket, the box and the folding strip from white card. Fold and paste the box together.

Cut the decorative border of the pattern from design paper and light pink card.

Wrap silk lace (JU0915) around the handle.

Layer design paper onto the centre of the basket and adhere the decorative borders.

Adhere the pompom trim (E18531) along the top and die-cut the letters (CR1281) from snow paper; adhere them in the centre of the strip.

Attach the box to the basket.

Die-cut two rabbits (COL1354) from grey, white, pale pink and black card and work with white ink. Apply a little ink to the rabbit's cheek with the Aquamarker.

To create a folded ear: cut the ear in half, round off the corners and adhere as shown.

Die-cut various eggs with COL1382 and COL1351 from white, pale blue and design paper.

Work them with ink.

Finish off the Easter basket as shown.



Cut a white 13.5 x 13.5 cm top-fold card. Cut 13.2 x 13.2 cm design paper, ink around the edges. Cut 12.1 x 12.1 cm light pink card.

Emboss 11.6 x 11.6 cm white card with design folder DF3414.

Die-cut two twigs from design paper.

Die-cut the chicklet (COL1351) from yellow, black and kraft card; work the edges of the chicklet with distress ink and apply a little ink to its cheek

with the Aquamarker.

Using design folder DF3413 die-cut a border with hearts from light pink card and with COL1325 a banner from light blue card.

Stamp the text in black ink onto the banner.

Adhere all layers to the card as shown and finish off the card.



Cut a 10.5 x 15 cm white card, trim the top corners slantwise. Cut design paper to 2 x 10.01 cm and 10.1 x 12.4 cm; trim the top corners of the last one at a slant. Work the edges with distress ink and adhere.

Tear design paper to a 15 x 2.5 cm strip fitting the label and adhere.

Die-cut the largest heart of CR1225 from white card. Emboss the heart with design folder DF3413 onto white and light blue card and design paper.

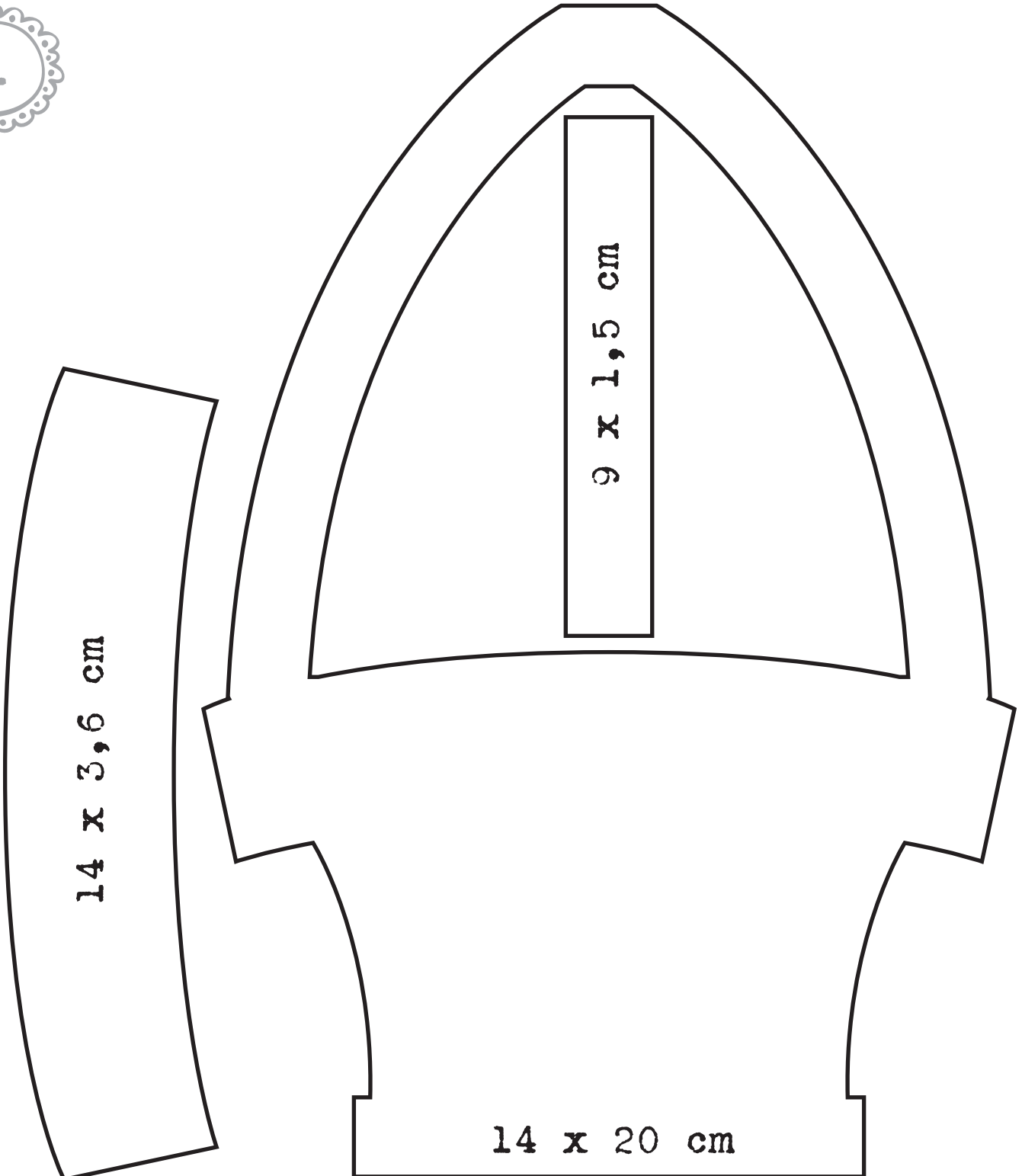
Adhere and leave to dry.

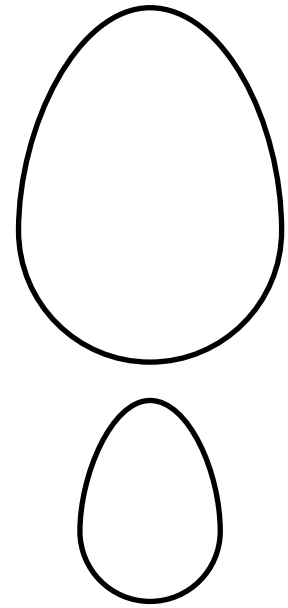
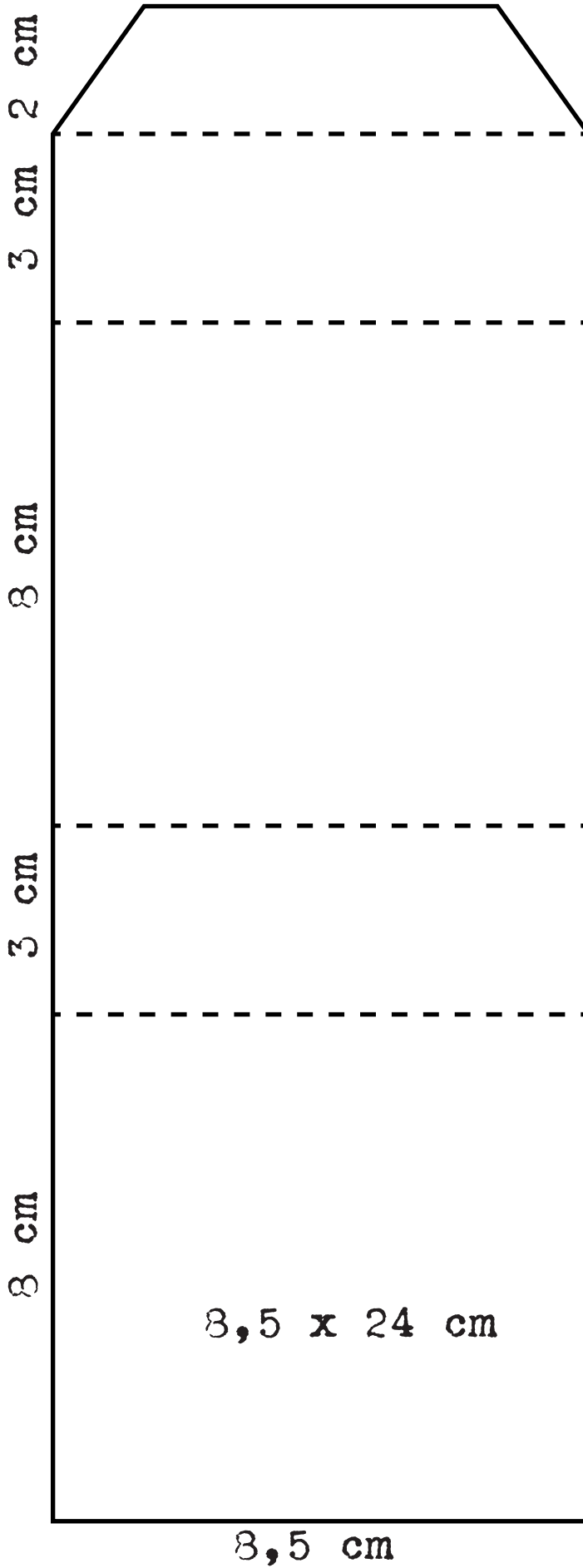
Then die-cut the heart with CR1225 and adhere to the large heart.

Die-cut the rabbit with COL1354 from grey, white, light pink and black card. Work the edges of the grey rabbit with white ink and apply a little ink to its cheeks with the Aquamarker.

Adhere all layers onto the card.

Make a hole in the top and finish off the card as shown.





2 x 11 cm

