

The Collection #28



MATTIE'S MOOISTE

Decoupage

By Astrid Schipper
astridschipper.blogspot.nl



Use a 15 x 30 cm strip of kraft card and score a line down the centre. Cut three squares: silver grey 14.5 x 14.5 cm, carnation white 14 x 14 cm and design paper 13.5 x 13.5 cm. Ink all edges with distress ink and layer together. Die-cut/emboss a circle from carnation white card and mount the picture on top. Mount the circle on top of

the card centrally. Die-cut the stamps and the small card from carnation white card and stamp the text/postage stamp onto them. Die-cut the envelope from kraft card. Paste together and attach to the card as shown. Finish off the card with a bow, flowers, twigs and birds.



Cut kraft card into two strips of 15 x 25 cm and score lines at 5 cm and 20 cm (first strip). Cut a 15 x 18 cm strip and score lines at 1 cm, 2 cm, 3 cm, 15 cm, 16 cm and 17 cm (the second strip and this strip are for the back of the card). Cut two silver-coloured 14.5 x 4.5 cm strips, two 14 x 4 cm carnation white ones and two 13.5 x 3.5 cm ones from design paper. Cut three squares: green 14.5 x 14.5 cm, carnation white 14 x 14 cm and design paper 13.5 x 13.5 cm. Cut a 13.5 x 6.75 cm strip from design paper. Ink the edges with distress ink and

layer together. Die-cut/emboss the corners and an oval from kraft card and a smaller oval from carnation white card. Adhere the corners to the flaps. Layer the ovals together and cut out the centre. Trace the aperture onto the card and cut out too. Adhere the ovals to the card. Attach the picture to the centre of the small strip of kraft card (for the back) and adhere the strip behind the aperture. Finish off the card with a bow, flowers, twigs, a text and birds.



Cut kraft card into a 15 x 13 cm single-fold card. Cut off the sides slantwise, starting in the centre of the open side towards the corners of the folded side. Cut three triangles: silver grey with sides of 14.5 cm, carnation white with sides of 14 cm and design paper with sides of 13.5 cm. Work all parts with distress ink and layer together. Attach lace

along one side of the triangle. Die-cut/emboss the circle from carnation white card and cut out the centre. Layer the picture behind the aperture and adhere the circle onto kraft card, trim leaving a narrow border. Adhere the circle onto the card. Finish off the card with a bow, flowers, twigs and birds.

VACATION

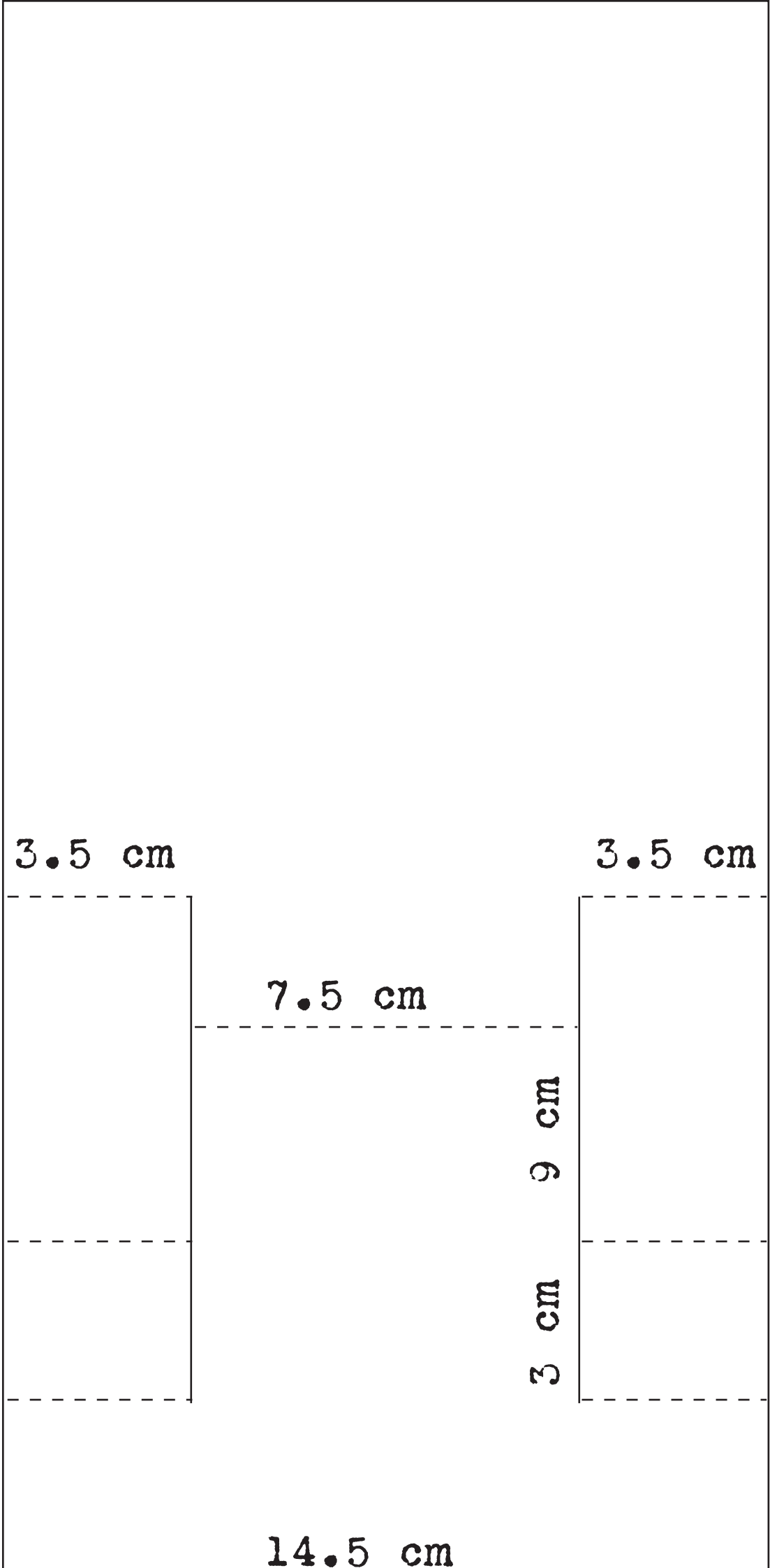
On the road

By Tineke van der Linden
tinekeskaartenhoekje.blogspot.nl



Cut kraft card into a 14.5 x 30 cm strip. Score and cut the lines as per pattern A. Cut pearly white card into strips of: 7.1 x 11.6 cm, 2.6 x 14.1 cm and two of 3.1 x 11.6 cm. Cut design paper into strips of: 6.8 x 11.3 cm, 2.3 x 13.8 cm and two of 2.8 x 11.3 cm. Cut out the picture and mat on pearly white card. Die-cut/emboss sunflowers from daffodil yellow and grass green card. Work the flowers with distress ink vintage photo and the leaves with bundled sage. Die-cut the grass from army green and metallic botanic card, the fence

from dark brown and the bird from kraft card, work the birds with distress ink vintage photo. Die-cut/emboss the VW-bus from celeste card, the butterflies from pearly white, the watering can from metallic steel and the tree from kraft metallic botanic card. Stamp the text onto pearly white and mat on grass green card. Use the perlen pen to make dots on the bodies of the butterflies. Finish off the card with a bow of tulle with a charm tied to it.



30 cm

3.5 cm

3.5 cm

7.5 cm

9 cm

3 cm

14.5 cm



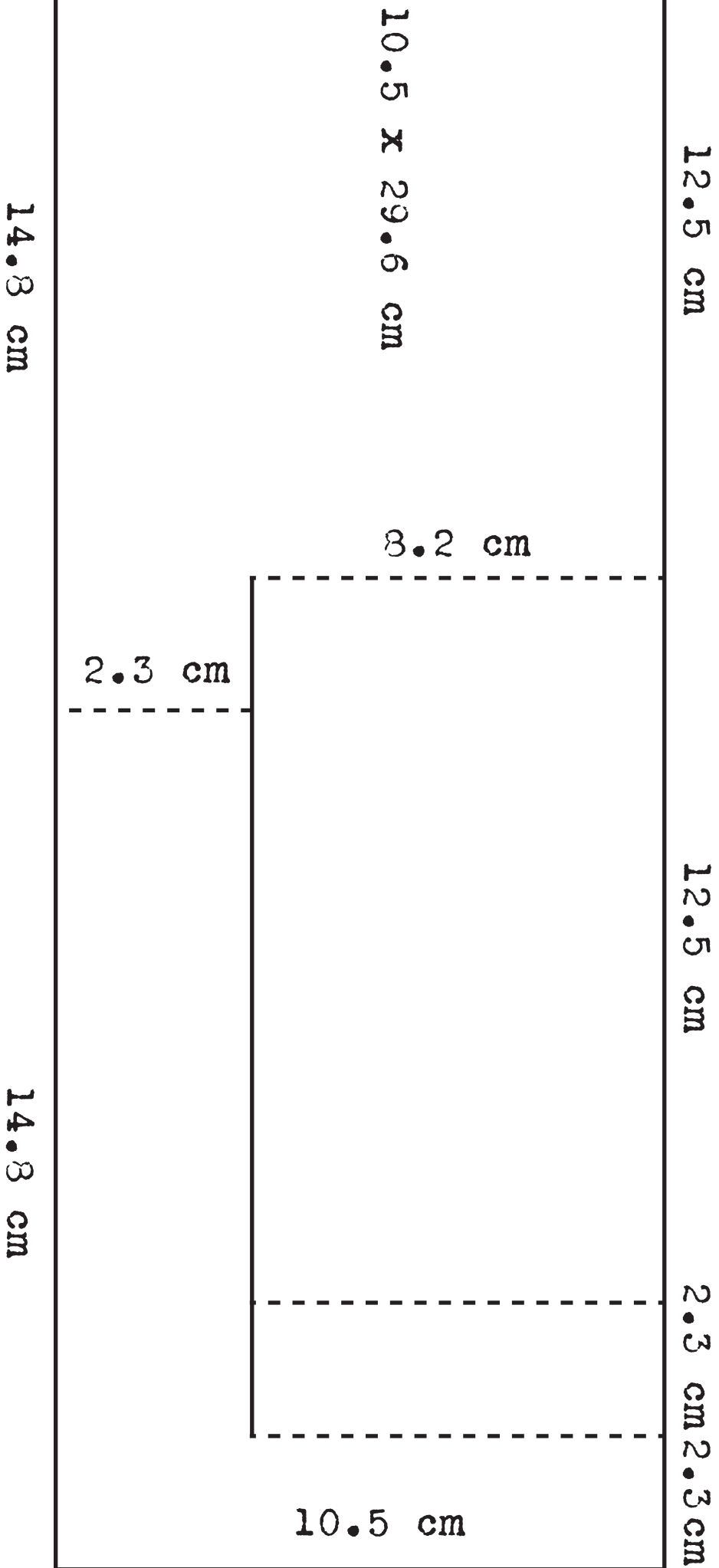
Cut army green card into a 14.5 x 14.5 cm single-fold card and mount a 13.9 x 13.9 cm pearly white square on top. Cut 6.6 x 13.6 cm design paper for the top half and 7 x 13.6 cm strip for the background on the card. Cut out the picture and mat on baby blue card. Die-cut/emboss the frame, the birds and the butterflies from pearly white card, the trees from metallic botanic, the fence

from dark brown, the grass from metallic botanic and army green and the VW-bus from metallic card. Work the birds and frame with distress ink pumice stone. Use the perlen pen to make dots on the bodies of the butterflies. Finish off the card with a text and a bow of tulle with a charm tied to it.



Cut aqua blue card into a 10.5 x 29.6 cm strip. Score and cut the lines as per pattern B. Cut pearly white card into strips of: 7.9 x 11.9 cm, 2 x 7.9 cm and 2 x 14.3 cm. Cut design paper into strips of: 7.6 x 11.6 cm, 1.7 x 7.6 cm and 1.7 x 14 cm. Die-cut/emboss the Eiffel tower and watering can from metallic steel card, the fence and butterflies from pearly white, the grass from spring green and metallic botanic card, the tree from metallic

botanic and craft, the bird from kraft card and the VW-bus from aqua blue. Work the VW-bus with distress ink pumice stone and the bird with vintage photo. Stamp the text onto pearly white card and mat onto spring green. Use the perlen pen to make dots on the bodies of the butterflies. Finish off the card with a bow of tulle with a charm tied to it.



Eline's Animals

By Marleen van der Most
handmadebymarleen.blogspot.nl



Copy the pattern onto A4-card, cut out and fold in half. Make the blocks from different colours of card and mount design paper (2 mm smaller on each side) on top. Adhere the blocks as shown. Die-cut the letters of the name and adhere onto the small blocks in the top half of the tower. Die-cut the giraffes, balloons, stars, a number and the text and work with coordinating colours of distress ink. Cut off the paws from one giraffe and

adhere the body to the inside of the card with the neck sticking out on the front. Adhere 3D-tape and lengths of wax cord behind the balloons. Round off the paws and using 3D-tape adhere them with lengths of wax cord, bells and the giraffe's head to the card. Adhere the other giraffe together and using 3D-tape add to the card together with a number. Finish off the card.



Cut a 13.5 x 13.5 cm single-fold card and layer 13 x 13 cm pale pink card and 12,5 x 12,5 cm design paper on top. Cut design paper into a 13,5 x 6,5 cm rectangle and layer across the card. Adhere pink wax cord along the bottom edge. Use CR1201 to cut out a white circle with border and CR1248 to cut out one from craft card. Use COL1362 to die-

cut a circle with smooth edge from design paper. Adhere the circles together and place in the centre of the card. Die-cut the name and the parts of the sheep; adhere the sheep together. Die-cut/emboss the text, work with distress ink. Finish off the card.



Cut a 15 x 10.5 cm white single-fold card and mount 14.5 x 10 cm light blue and 14 x 9.5 cm design paper on top. Layer together. Cut three rectangles: 10.5 x 7.5 cm from design paper, 8 x 7 cm from white and 7.5 x 6.5 cm from design paper. Adhere the first rectangle on the left and the other two on the right. Die-cut the flags from designpaper, layer onto turquoise and trim leaving a narrow border. Die-cut the elephant and

five balloons. Adhere the elephant together and onto the card. First attach wax cord and 3D-tape to the back of the balloons and then adhere them to the card, fixing the ends of the wax cord under the trunk of the elephant. Die-cut the name and adhere the letters onto the flags. Adhere the flags to the card using 3D-tape. Die-cut/emboss the text from turquoise and work with distress ink; adhere using 3D-tape too. Finish off the card.



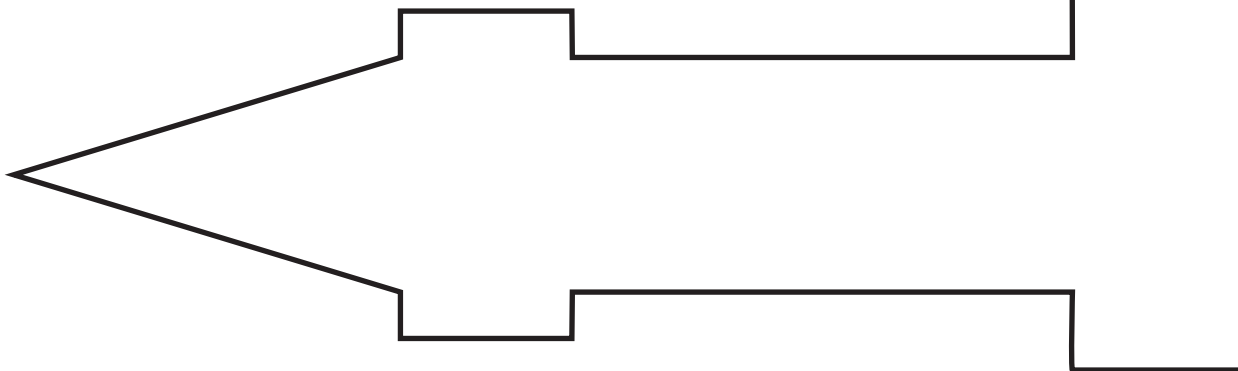
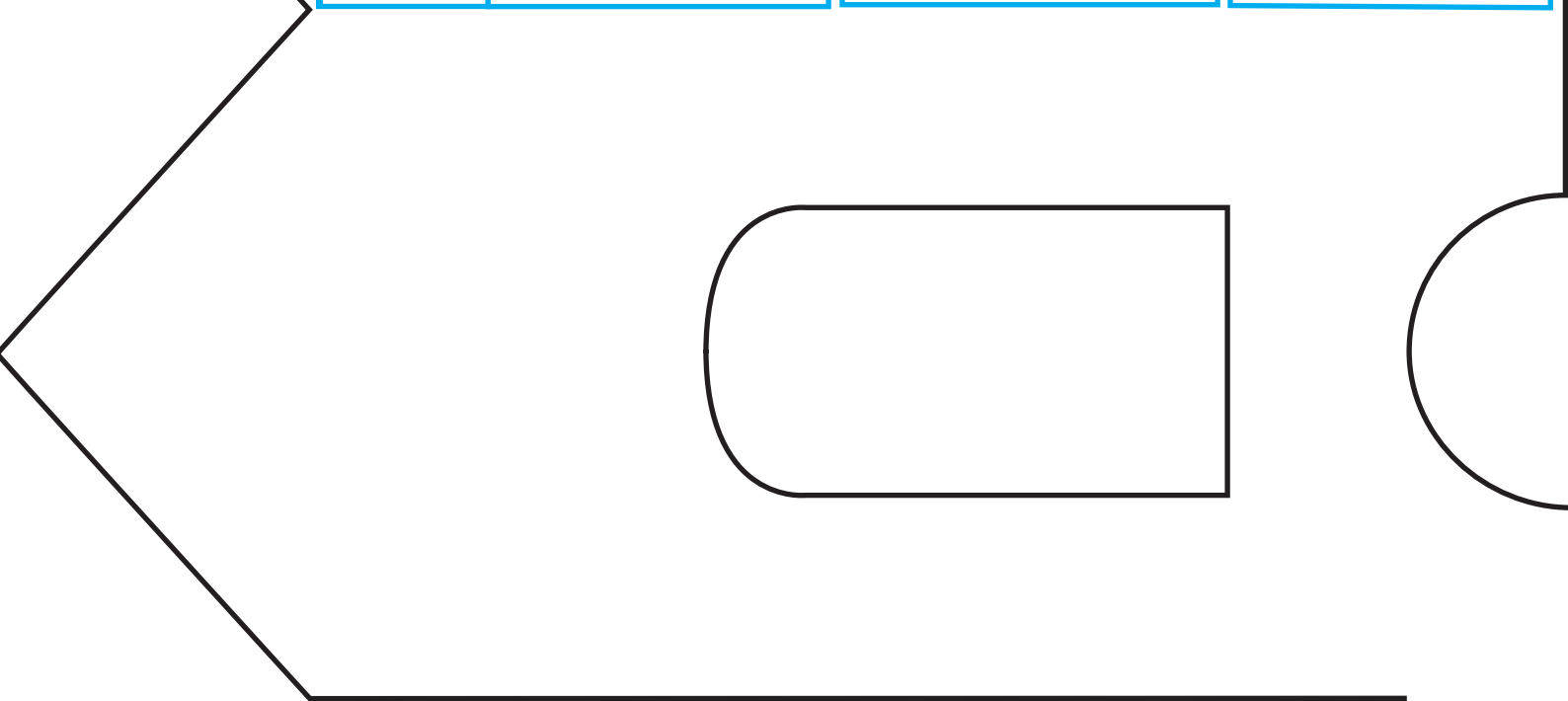
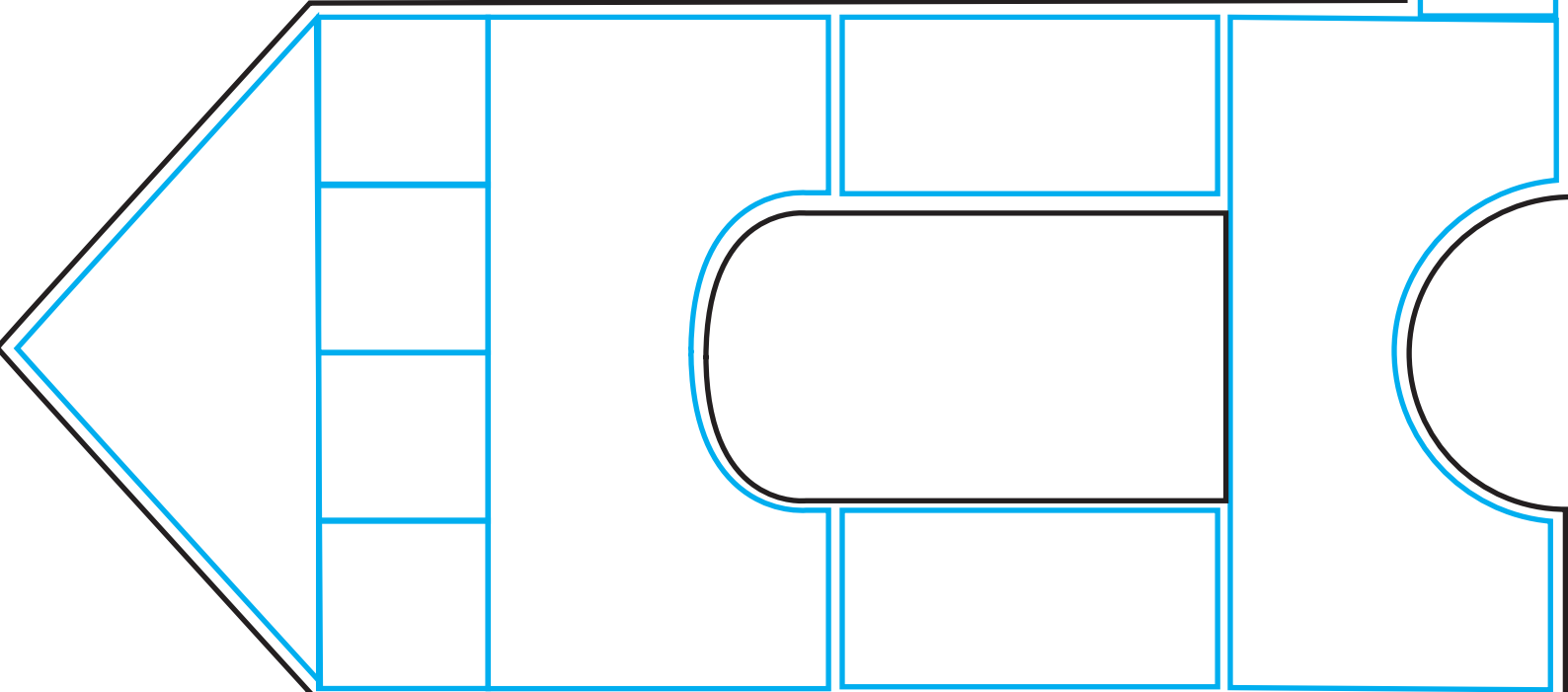
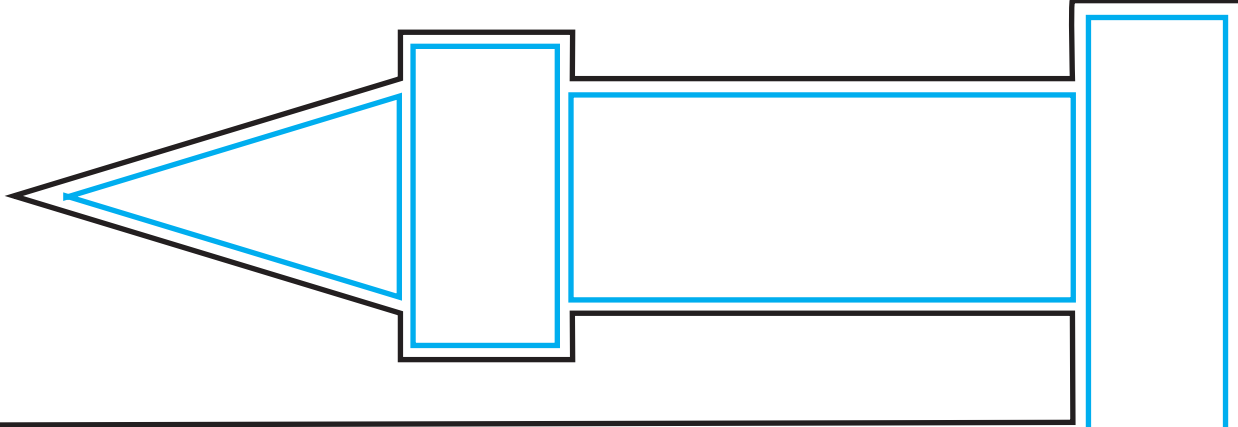
By Mandy Middelburg
dehobbydroom.blogspot.nl

Materials:

Collectables: COL1362 (Snow Globe), COL1384 (Elephant), COL1384 (Balloons), Craftables: CR1281 (Alphabet), Creatables: LR0329 (Flags), Clear Stamps: ECO138 (Welcome Little One), Inkpad, Pretty Papers bloc: PK9114 (Kraft), Design paper, Cardstock: light pink, dark pink, grey, silver-coloured, white, black, Diamond gems: JU0937 (pink), Doily, Flower: pink, Glitter glue, Little Bells: JU0942 (pink), Ribbon: grey, Rope, Twine: pink with white

Cut kraft card (PK9114) into a 13.5 x 13.5 single-fold card. Mount a 13 x 13 cm dark pink square on top. Then mount 12.5 x 12.5 cm design paper on top, using 3D-tape; apply glitter glue to the edges. Adhere a doily to the centre of the card using double-sided tape. Die-cut a snow globe (COL1362), adhere to the doily using double-sided

tape and apply glitter glue to the edges. Die-cut the elephant (COL1384) from grey card, the head from silver-coloured card and the feet from white card. Adhere together, using 3D-tape for the head with trunk. Adhere the rope of the balloons (COL1384) behind the trunk. Die-cut a small pink flower and adhere near one ear, add a pink diamond gem (JU0937). Die-cut the balloons from different prints of design paper; adhere using 3D-tape of various thicknesses. Apply glitter glue. Die-cut the flags (LR0329) from dark pink card and design papers. Die-cut the letters (CR1281) from black card and apply glitter glue. Attach four pink little bells (JU0942) between the flags. Layer grey ribbon and pink and white twine near the feet. Stamp the text (ECO138) onto light pink card. Cut a 1 cm wide banner as shown, attach with 3D-tape. Finish off the card with a bow with pink and white twine.



Baby Boy & Girl

By Boukje van der Weit
www.boukjesblog.blogspot.com

General:

- Die-cut the parts of the baby and animals from card or design paper and layer together as per example using a glue pen, double-sided tape and foam tape.
- Ink the edges.
- Use a make-up brush to apply a little Pan Pastel permanent red to the cheeks.
- Work the flowers with distress ink and add diamond gems.
- Die-cut the leaves from moss green card.



Cut a 9 x 30 cm pearly white strip, fold in half; the fold is on the left. Mount 13 x 8 cm design paper on top of the single-fold card. Add a strip of jute paper near the fold. Die-cut and work the circles, the sheep and the flowers with distress ink and attach to the right-hand side of the card. Attach

two bells to scrapper's floss, tie it around a length of tulle and make a tuft with a button, pompon trim and twigs. Stamp a text onto kraft card and slip under the tuft. Finish off the card with stars and draw lines with a gelly roll pen.



Cut a 12.5 x 12.5 cm pearly white top-fold card. Cut an 8 x 8 cm square from design paper and mat on pearly white and kraft card. Stamp the text in the top left corner. Die-cut and work all parts with distress ink and layer together as

shown. Make a pretty tuft using scrapper's floss, bells, tulle and pompon trim; decorate with a little pin. Finish off the card with stars and draw lines with a gelly roll pen.



Cut a 10.5 x 13 cm pearly white top-fold card. Cut 6.5 x 11 cm from design paper, mat on pearly white and kraft card. Stamp the text in the top left corner. Die-cut and work all parts with dis-

stress ink and layer onto the card as shown. Finish off the card with flowers and a bell and draw lines with a gelly roll pen.



By Mandy Middelburg
denobbydroom.blogspot.nl

Materials:

Collectables: COL1387 (Baby), Craftables: CR1281 (Alphabet), Creatables: LRO218 (Pram), LRO220 (Gefeliciteerd), Cardstock: pink, blue, dark pink, kraft, black, Flower Ribbon: FR1127, Glitter glue, Little Bells: JU0939 (pink), JU0940 (blue), Paper Flowers, Rope, Tulle Ribbon: JU0914

Copy the pattern to kraft card, score and fold. Decorate the bottom in front and the top of the second part of the card with flower ribbon (FR1127). Die-cut the pram (LRO218) and attach

near the flowers. Add diamond gems (JU0937) to the wheels. Die-cut the baby (COL1387) 2x, use one complete baby and from the second you will only need the head, hood and hands. Apply a little pink chalk or Panpastel to the cheeks. Die-cut Gefeliciteerd (Congratulations) (LRO220) and adhere. Make pink and blue flags with letters (CR1281) and apply glitter glue. Attach the flags to rope and cut two dark pink strips looking like poles and adhere the ends of the rope. Add a silk bow (JU0914) and large flower with a pink (JU0939) and blue (JU0940) little bell. Finish off the card as shown.



15 cm

6 cm

6 cm

5 cm

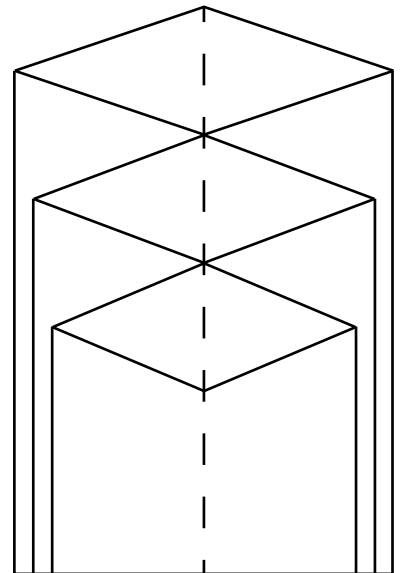
5 cm

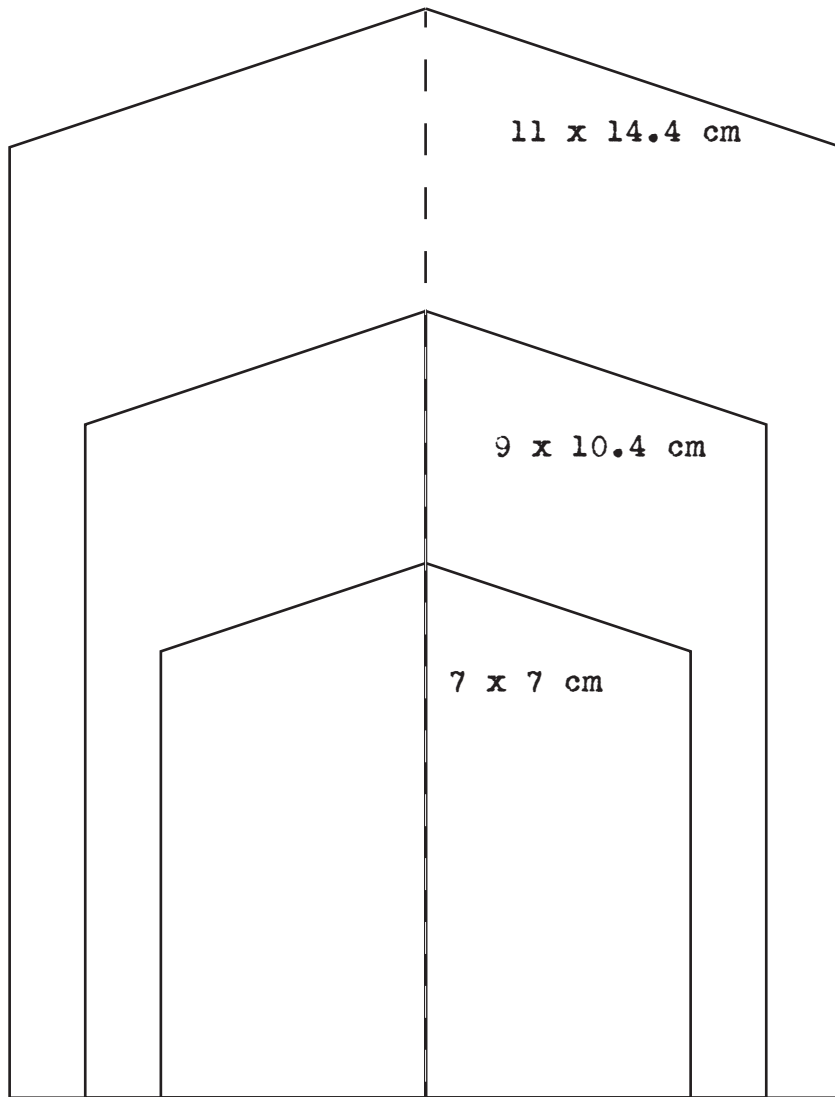
4 cm

4 cm

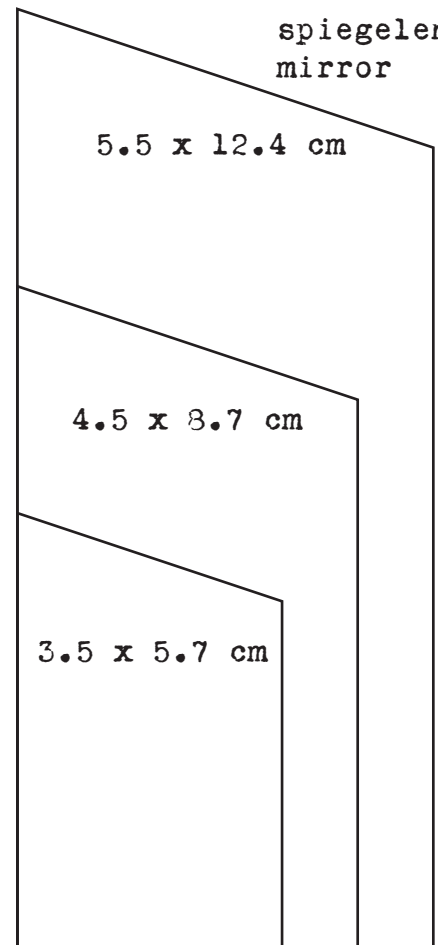
5 cm

30 x 15 cm





spiegelen
mirror



CREATABLES

Get well cards

By Wybrich van der Roest
wybrichspapercards.blogspot.com



Cut a 12 x 15 cm pearly white top-fold card. Cut 10.5 x 13.5 cm design paper and mat on kraft card. Die-cut a tab from pearly white card and design paper. Stamp an image and colour in. Die-cut/emboss a medicine strip from silver-coloured card and medicines from pearly white card, layer together and then adhere behind the image. Die-

cut/emboss the doctor's bag from kraft card and work with distress ink. Tie wax cord to the tab. Die-cut the text from pearly white and work with distress ink; adhere with foam tape. Die-cut/emboss flowers from design paper and pearly white card. Tie scrapper's floss through a button and attach in the centre of the flower.



Cut kraft card into a 13.5 x 13.5 cm top-fold card; round off the corners. Cut 12 x 12 cm design paper, mat on pearly white and round off the corners. Cut 10 x 10 cm design paper, mat on pearly white and round off the corners; adhere using foam tape. Die-cut/emboss the flower wreath from pearly white card, tie wax cord to it. Use the flower border die to die-cut an image. Die-cut/

emboss the swirls and leaves from pearly white and the flowers from design paper and pearly white card. Adhere a bow of wax cord under a flower and add the roses to the centre. Die-cut/emboss the medicine strip from silver-coloured card and the medicines from pearly white; layer together. Stamp a text onto kraft card, round off the corners and slip the medicine strip behind.



Cut kraft card into a 12 x 15 cm top-fold card. Cut 10.5 x 13.5 cm design paper and mat on pearly white. Cut a 4 x 13.5 cm strip from design paper. Die-cut a pearly white square; use a Nestability die to cut a square from its centre, creating a frame. Emboss the frame with a design folder and work with distress ink. Layer design paper behind the aperture and trim leaving a narrow border. Cut out an image and layer behind the frame. Die-cut two circles from design paper and adhere partially behind the frame. Die-cut/emboss two pearly white flowers and work with distress ink. Tie scrapper's floss through a button and adhere

to the centre of the flower. Die-cut/emboss the doctor's bag from kraft card and work with distress ink. Die-cut/emboss plasters from caramel and white card; cut out the white central part and adhere to the caramel plasters. Die-cut/emboss a medicine strip from silver-coloured card and medicines from pearly white, layer together. Place the plasters and medicine strip into the doctor's bag. Tie wax cord around the handle. Die-cut/emboss from pearly white card and work with distress ink: the syringe, thermometer and text. Tie wax cord around the text.

CLEAR STAMPS

Hospital

By Irma de Vries
irma-scrapkaarten.blogspot.com



Cut kraft card into a 13.5 x 13.5 cm single-fold card and layer 13 x 13 cm design paper on top. Cut design paper into a 4 x 13.5 cm strip and mat on kraft card. Ink the doily and adhere partially under the strip. Die-cut and work the text, envelope, leaves, plaster and medicine strip with distress ink. Make a tuft with flowers, paper roses,

leaves, plaster and the medicine strip. Cut a 4 x 4 cm square from tissue paper and slip into the envelope. Die-cut the stethoscope from silver-coloured, black and white card. Cut away certain parts and assemble the stethoscope. Finish off the card.



Cut kraft card into a 28 x 10 cm strip; score the whole length at 6.5 cm up from the edge. Measure and mark the strip at 2 cm, 8.5 cm, 15 cm and 21 cm. Score the bottom half of the lines and cut in the top half. Cut off the corners slantwise of the narrow parts (glue strips). Fold the scored lines. Cut design paper into four squares of 2.5 x 2.5 cm (layer them onto the wrong side of the box) and four squares of 5.5 x 5.5 cm (layer these onto the right side of the box). Adhere the box together. Cut a 2 x 11.5 cm strip from kraft card and cut in 1 cm up from the edge at 3 mm from

the side. Die-cut the circle from design paper and layer centrally onto the strip of kraft card. Die-cut the doctor's bag from kraft card too and adhere using double-sided tape (leave the top open). Die-cut the frog and the plaster. Stamp a few doctor's items and cut them out. Place a piece of bandage into the bag. Adhere all die-cut and stamped parts as per example. Stamp a text onto one flap of the box and make a flower tuft on the other flap. Hang the strip in the box. Open up one side of the box to flatten it before putting it in an envelope.



Cut kraft card into a card of 16 cm (high) x 15 cm (wide), fold in half and layer 7.5 x 14.5 cm design paper onto the front. Cut red design paper into 11.5 x 11.5 cm and mat on kraft card. Adhere to the card as shown. Cut/tear a light-coloured 5 x 12 cm strip from design paper and stamp a text

onto it. Punch three circles from design paper and two from cork, adhere to the card. Die-cut the thermometer, syringe, flowers and leaves. Stamp two images and cut out. Make flower tufts as per example. Finish off the card with the text.