

The Collection #36



Cover card

By Wybrich van der Roest
wybrichspapercards.blogspot.com



Materials:

Craftables: CR1331 (Circles-basic shapes), Creatables: LR0401 (Tiny's Tulip), LR0403 (Tiny's Ferns), Decoupage sheet: IT581 (Bulb fields Windmills), Clear stamps: PL1523, CS0943 (Wood), Inkpads: black, white, Distress

ink: peeled paint, vintage photo, Pretty Papers blocs: PK9114 (Kraft), PK9127 (Watercolour), Papicolor card: carnation white (903), army green (954), red (918), Corner punch, Button twine, Circle punch

Cut a carnation white 11 x 15 cm top-fold card. Cut 7.5 x 12.5 cm design paper. Stamp CS0943 with distress ink peeled paint onto white card and adhere to design paper of 8.5 x 13.5 cm and 9 x 14 cm. Use Craftables circles and cut out an image from the decoupage sheet and a decorative circle from design paper. Adhere together. Cut a banner from design paper, stamp wood and a text. Die-cut and emboss tulips from red card and work with white distress ink. Die-cut and emboss leaves from army green card and work with distress ink. Tie button twine around the tulips and adhere one end under the banner and the other under the tulips. Die-cut the ferns from army green card. Die-cut and emboss the bulbs from kraft and work with distress ink. Punch two circles from design paper, stamp wood and a text onto them. Tie them to the card with button twine.

Spring is in the air

By Wybrich van der Roest
wybrichspapercards.blogspot.com



Materials:

Craftables: CR1331 (Circles-basic shapes), Creatables: LR0399 (Tiny's Narcissus), LR0400 (Tiny's Crocus), LR0403 (Tiny's Ferns), LR0404 (Tiny's Basket), Cutting and embossing machine, Decoupage sheet: IT582 (Bulb fields Holland), Clear stamps: PL1523, CS0940 (Text), Inkpads: black, white, Distress ink: peeled

paint, spiced marmalade, vintage photo, Pretty Papers blocs: PK9114 (Kraft), PK9127 (Watercolour), Papicolor card: carnation white (903), army green (918), daffodil yellow (928), purple (920), Silver card, Corner punch, Button twine

Cut a carnation white 13.5 x 13.5 cm top-fold card and round off the corners on the right. Cut 12 x 12 cm design paper and use distress ink to stamp a background text (CS0940), mat on design paper. Die-cut two circles and adhere overlapping. Cut out an image, mat on design paper and round off the two corners on the right. Die-cut and emboss:

- a flower basket from kraft, work with distress ink.
- flowers from daffodil yellow and a branch from green, work the flowers with distress ink.
- the flower bulbs from kraft and work with distress ink.

Mount them onto the card as shown. Stamp a text onto carnation white card, cut into a label and tie to the basket with button twine. Die-cut and emboss a rake and spade from kraft and silver card, work with distress ink. Tie to the card with button twine.

General instructions:

Work the edges with distress ink vintage photo.

Stamp the tulip border and the butterflies with black ink onto white stamping paper and colour them in with Copic Markers.

Stamp background CS0943 onto white stamping paper and colour in lightly with distress ink. Cut out the planks and make a fence.

Stamp background CS0939 with watermark ink onto the cut-out design paper.

Use COL1340 to stamp clouds onto pearly white paper. Flip over and distress the edges with weathered wood.

Die-cut the leaves and stems from moss green card and the flowers from pearly white.



Materials:

Collectables: COL1340 (Clouds),
Creatables: LR0401 (Tiny's Tulip),
LR0403 (Tiny's Ferns), Cutting
and embossing machine, Clear
stamps: CS0898 (Groeten uit
Holland/Greetings from), CS0911
(Map of Holland), CS0926 (Herb
border with butterflies), Clear

stamps background: CS0939 (Anja's Swirls), CS0943 (Wood), Clear
stamps border: TC0834 (Tulips), Inkpads: black, brown, watermark
ink, Copic Markers: E42, E44, G99, R39, R46, RV34, RV91, Y21, Y38,
YG11, YG63, YG67, YR68, W3, Distress ink: vintage photo, and for
the Tulips: dusty concord, picked raspberry and spun sugar, Ferns:
forest moss, gathered twigs and pine needles, Clouds: weathered
wood, Decoupage sheet: IT0582 (Bulb fields Windmills), Basic Paper
bloc: PK9127 (Watercolour), Papicolor card: pearly white (930),
moss green (951), Kraft card, Paper distresser, Pencil, Score tool

Trace the pattern onto pearly white card and score and
fold as per pattern. Cut yellow card into two 7 x 13.5 cm
rectangles and six 3.5 x 2 cm rectangles. Adhere to the card.
Cut pink card into an 11 x 8 cm rectangle, layer onto 11.5
x 8.5 cm kraft card and then onto the centre of the card.
Stamp the map of Holland onto pearly white card, layer onto
6.5 x 8 cm design paper and work the edges with a paper
distresser. Finish the card off.



Materials:

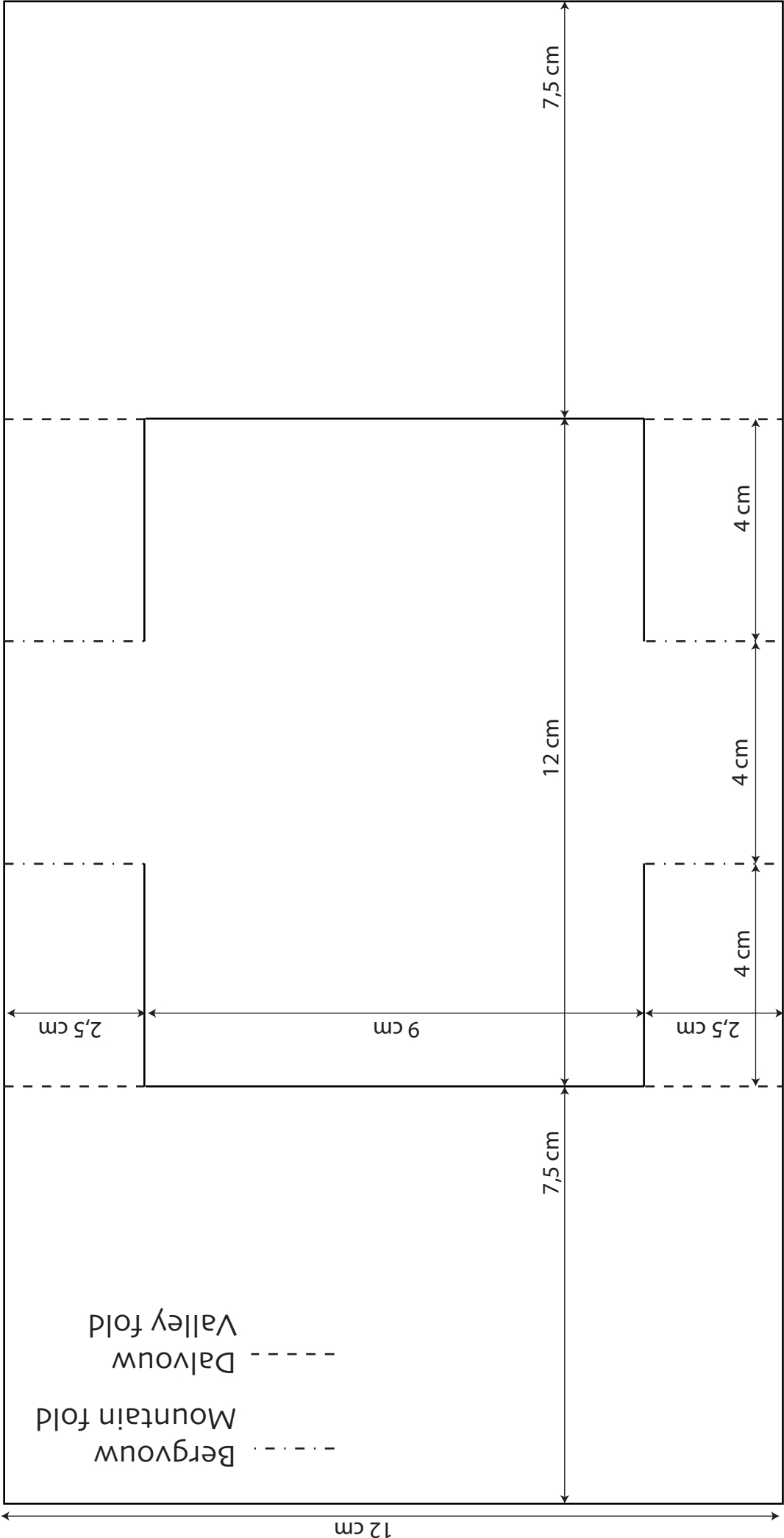
Collectables: COL1340 (Clouds),
Creatables: LR0399 (Tiny's
Narcissus), LR0400 (Tiny's
Crocus), LR0401 (Tiny's Tulip),
LR0402 (Tiny's Grape Hyacinth),
LR0403 (Tiny's Ferns), LR0404
(Tiny's Basket), Cutting and

embossing machine, Clear stamps: CS0926 (Herb border with
butterflies), LR0960 (Gefeliciteerd/Congratulations), Clear
stamps background: CS0939 (Anja's Swirls), CS0943 (Wood),
Clear stamps border: TC0834 (Tulips), Inkpads: black, watermark
ink, Copic markers: E42, E44, G99, R39, R46, RV34, RV91, Y21,
Y38, YG11, YG63, YG67, YR68, W3, Distress ink: vintage photo,
Grape Hyacinths: dusty concord, weathered wood, Narcissus:
forest moss, mustard seed, scattered straw, Tulips: dusty concord,
picked raspberry, spun sugar, Ferns: forest moss, gathered twigs,
pine needles, Clouds: weathered wood, Decoupage sheet: IT581
(Bulbfields Holland), Basic Paper bloc: PK9127 (Watercolour),
Papicolor card: pearly white (930), moss green (951), Kraft card,
Pencil, Score tool

Score 24 x 14.5 cm pearly white card at 4 cm, 5.5 cm, 18.5
cm and 20 cm and fold as per example. Cut design paper
into two 3.5 x 14 cm rectangles and adhere to the flaps of
the card. Cut design paper into a 12.5 x 14 cm rectangle
and adhere to the centre of the card. Cut an 8 cm Ø circle
from the centre. Die-cut the basket and a few crocuses and
layer behind the circle. Adhere this card onto a 21 x 14.5 cm
pearly white rectangle, firstly only adhere one of the flaps
of the folded card. Cut design paper into a 12.5 x 14 cm
rectangle and adhere to the centre of the white card. Cut out
a picture (IT581), mat on kraft card and trim leaving a 3 mm
border. Adhere the picture to the centre of the white card
too; making sure it is well visible through the aperture. Now
adhere the other flap of the folded card. Finish the card off.

27 x 12 cm

24 x 12 cm



By Chantal Klokgieter
chantalcrea.blogspot.nl

12.5 x 15 cm



Materials:

Collectables: COL1314 (Tab with NL-text), COL1373 (Blackboard), COL1384 (Balloon), COL1402 (Piglet), Craftables: CR1355 (Grass), CR1348 (Wood), Creatables: LR0257 (Branch), LR0204 (Birds), LR0205 (Birds), LR0341 (Cupcake), LR0329 (Flags), Design folder: DF3404 (Wire netting), Cutting and embossing machine, Distress ink: walnut stain, vintage photo, Pretty Papers blocs: PB7049, PB7050, PK9124, Snow paper: CA3104, Clear stamps: PL1524, Papicolor card: pearly white

(930), spring green (954), light green (947), grass green (907), salmon pink (925), light pink (923), mauve (937), blossom (934), Bells: JU0939, Gems: JU0937, Ribbon: JU0921, Rope: JU0949, Dark pink coloured pencil, White gelpen

Cut pearly white card into 29 x 14 cm (width x height) and score at 8 cm from the left. Cut design paper: 20.5 x 13.5 cm, 14.5 x 13.5 cm (cut off the corners), 9.5 x 7 cm and 7 x 13.5 cm. Die-cut the shapes from card colours you like and die-cut the tabs (COL1314) from design paper. Cut a rectangle into the base card using the die of the blackboard. Die-cut the branch from kraft paper and paper in green colours. Cut off the green leaves and adhere to the brown branch. Draw veins onto the leaves using a white gelpen. Work the blackboard-rectangle and the wood with distress ink vintage photo. Assemble the piglets and work with a white gelpen and a dark pink coloured pen. Work the birds with walnut stain and vintage photo. Make black eyes and draw lines onto the wing and tail. Adhere the card and design paper to the card as shown. Attach the tabs to the sides of the card with glue and the note paper to the left with foam tape. Finish the card off.

29 x 14 cm



Materials:

Collectables: COL1314 (Tab with NL-text), COL1373 (Blackboard), COL1384 (Balloon), COL1402 (Piglet), Craftables: CR1355 (Grass), CR1348 (Wood), Creatables: LR0257 (Branch), LR0204 (Birds), LR0205 (Birds), LR0341 (Cupcake), LR0329 (Flags), Design folder: DF3404 (Wire netting), Cutting and embossing machine, Distress ink: walnut stain, vintage photo, Pretty Papers blocs: PB7049, PB7050, PK9124, Snow paper: CA3104, Clear stamps: PL1524, Papicolor card: pearly white (930), spring green (954), light green (947), grass green (907), salmon pink (925), light pink (923), mauve (937), blossom (934), Bells: JU0939, Gems: JU0937, Ribbon: JU0921, Rope: JU0949, Dark pink coloured pencil, White gelpen

LR0341 (Cupcake), LR0329 (Flags), Design folder: DF3404 (Wire netting), Cutting and embossing machine, Distress ink: walnut stain, vintage photo, Pretty Papers blocs: PB7049, PB7050, PK9124, Snow paper: CA3104, Clear stamps: PL1524, Papicolor card: pearly white (930), spring green (954), light green (947), grass green (907), salmon pink (925), light pink (923), mauve (937), blossom (934), Bells: JU0939, Gems: JU0937, Ribbon: JU0921, Rope: JU0949, Dark pink coloured pencil, White gelpen

Cut pearly white card into 29 x 14 cm (width x height) and score at 8 cm from the left. Cut design paper into: 20.5 x 13.5 cm, 14.5 x 13.5 cm (cut off the corners), 9.5 x 7 cm and 7 x 13.5 cm. Die-cut the shapes from card colours you like and die-cut the tabs (COL1314) from design paper. Cut a rectangle into the base card using the die of the blackboard. Die-cut the branch from kraft paper and green paper. Cut off the green leaves and adhere to the brown branch. Draw veins onto the leaves with a white gelpen. Work the blackboard rectangle and the wood with distress ink vintage photo. Assemble the piglets and work with a white gelpen and a dark pink pen. Work the birds with walnut stain and vintage photo. Make black eyes and draw lines onto the wing and tail. Adhere the card and design paper to the card as shown. Attach the tabs to the sides of the card with glue and the note paper to the left with foam tape. Finish the card off.



Materials:

Collectables: COL1314 (Tab with NL-text), COL1315 (Tab with UK-text), COL1384 (Cloud), COL1400 (Dinosaurs), Craftables: CR1355 (Grass), Creatables: LR0256 (Branch), LR0204 (Bird), Cutting and embossing machine, Distress

ink: walnut stain, vintage photo, Pretty Papers blocs: PB7049, PK9114 (Kraft), Snow paper: CA3104, Papicolor card: carnation white (903, spring green ((954), light green (947), grass green (907), army green (954), dark green (622), Bells: JU0940, Ribbon: JU0922, Rope: JU0949, Black pen, White gelpen

Cut a center-step card from pearly white card. Cut blue card and design paper to size and adhere. Die-cut all shapes from card colours you like and the branches (COL1315) from design paper. Die-cut the branch from kraft paper and green coloured paper. Cut off the green leaves and adhere to the brown branch. Draw veins onto the leaves with a white gelpen. Assemble the dinosaurs and work with a black and white pen. Work the bird with distress ink walnut stain and vintage photo. Make black eyes and draw lines onto the wing and tail. Adhere the layers to the card as per example. Adhere the tabs to the sides of the base card with glue. Finish the card off.



Materials:

Collectables: COL1314 (Tab with NL-text), COL1315 (Tab with UK-text), COL1401 (Deer), Craftables: CR1355 (Grass), CR1280 (Star garland), Cutting and embossing machine, Pretty Papers blocs: PK9124, PB7043, PB7049, PK9114 (Kraft), Papicolor card: carnation white (903), pearly white (930), mocca (953), nut brown (939), chocolate brown (919), light pink (923), Clear stamps CS0922, CS0959, Charms: JU0885, Bells: JU0939, Ribbon: JU0921, Rope: JU0949, Tulle: JU0924, Black pen, White gelpen

Cut out the pattern and score the centre lines. Cut pearly white card into 9.5 x 11 cm and 9 x 10.5 cm (width x height). Cut kraft card into 7 x 7 cm and 9.5 x 11 cm. Cut design paper into 6.5 x 6.5 cm, 9.5 x 11 cm and 8.5 x 10 cm (2x). Die-cut all shapes from card colours you like and the tabs (COL1315) from design paper. Assemble the deer and work with a black and white pen. Adhere the 8.5 x 10 cm design paper onto the 9.5 x 11 cm pearly white card; punch a hole in the top centre. Lay the card in base card (under the two slides). Adhere a small foam pad at the bottom of the slides and glue the 7 x 7 cm kraft paper with the 6.5 x 6.5 cm design paper on top. Now the big card slides out of the base card and the small card sticks out above the base card. Apply glue to the two flaps of the base card and stick the card together with the flaps inside. Place foampads under the 9.5 x 11 cm kraft paper with the 9 x 10.5 cm pearly white card and 8.5 x 10 cm design paper. Do not attach foam pads along the top! The big card needs to slide. Adhere the layer on top of the base card. Adhere the tabs to the small piece of design paper and between the kraft paper and design paper. Finish the card off.



12 cm

12 cm

2.5 cm

2.5 cm

2.5 cm

14.5 cm

14.5 cm

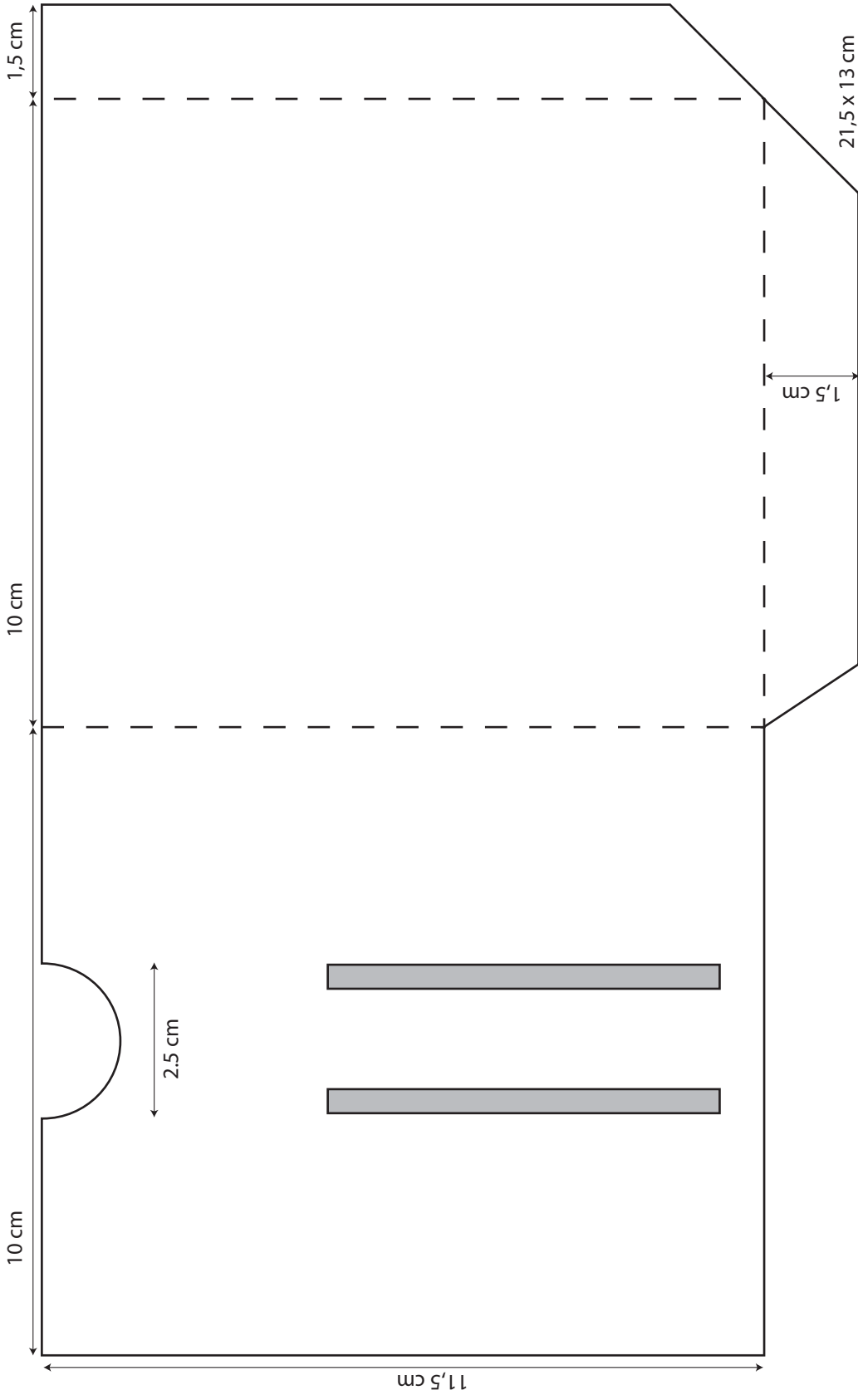
9.5 cm

--- Dalvouw / Valley fold

-.-.- Bergvouw / Mountain fold

29 x 14.5 cm





Mattie's Mooiste

By Tineke van der Linden
tinekeskaartenhoekje.blogspot.nl

General instructions:

Ink the edges of the design paper with distress ink pumice stone.



Materials:

Collectables: COL1394 (Eline's Helleborus), Craftables: CR1331 (Circles-basic shapes), Creatables: LR0238 (Wedding rings), LR0405 (Anja's Rectangle), Cutting and embossing machine, Clear stamps: CS0957 (Proficiat/

Congratulations), Distress ink: pumice stone, Victorian velvet, Inkpads: Versafine-onyx black, Memento-grey flannel, Pretty Papers bloc: PK9127 (Watercolour), Papicolor card: Original pearly white (930), silver grey (902), Metallic gold (338), Decoupage sheet: MB0158 (Mattie's mooiste-Swans), Adhesive pearls: JU0932 (diamond gems), small pearls, Silk ribbon: JU0914 (white)



Materials:

Craftables: CR1248 (Circle and flower stitch), CR1249 (Square and flower stitch-leaf), Creatables: LR0304 (My first Sneakers), LR0388 (Flower doily-flower), LR0405 (Anja's Rectangle), Cutting and

embossing machine, Clear stamps: CS0958 (Baby), Distress ink: pumice stone, faded jeans, Inkpads: Versafine-onyx black, Color Box-baby blue, Decoupage sheet: MB0159 (Mattie's mooiste-Baby), Pretty Papers bloc: PK9127 (Watercolour), Papicolor card: pearly white (930), blue (955), army green (954), night blue (941), Embroidery thread, Adhesive pearls: JU0932 (diamond gems), Rope



Materials:

Collectables: COL1383 (Village decoration set 2-cat), Craftables: CR1290 (Tiny's Birdhouse), CR1303 (Topiary set), CR1333 (Oval-basic shapes), CR1354 (Punch die-Butterflies), Creatables: LR0205 (Fence),

LR0260 (Wheelbarrow and Watering can), LR0351 (Petra's Birds), LR0360 (Tiny's Grass), LR0374 (Garden rake), LR0405 (Anja's Rectangle), Design folder: DF3414 (Leaves), Distress ink: pumice stone, shaded lilac, peeled paint, Decoupage sheet: MB0152 (Mattie's mooiste-Summer flowers 1), Basic Papers bloc: PK9127 (Watercolour), Papicolor card: Original pearly white (930), lavender (921), purple (920), army green (954), light green (947), Recycled kraft grey (322), kraft brown (323), kraft black (324), Metallic steel (332), Royal silver (101)

Cut a 19.5 x 15 cm silver grey top-fold card and two single cards: pearly white 19 x 14.5 cm and design paper 18.7 x 14.2 cm. Die-cut Anja's rectangle twice from pearly white card and work with distress ink Victorian velvet. Lay the rectangles next to each other and adhere to the design paper. Die-cut the decorative circle from silver grey card and cut out the image. Die-cut the flowers and leaves of the helleborus from design paper and the flower hearts from silver grey and pearly white card. Use Memento gray flannel ink to stamp the dots onto the petals. Decorate the flowers with an adhesive pearl. Die-cut the wedding rings from Metallic gold and complete with pearls. Stamp the text onto pearly white card and mat on design paper. Complete the card with a bow.

Cut a 15 x 15 cm blue single-fold card. Cut two single cards: pearly white 14.4 x 14.4 cm and design paper 14 x 14 cm. Die-cut Anja's rectangle from pearly white, work with distress ink faded jeans and cut out along the embossed parts. Die-cut the circle (CR1248) from pearly white card and embroider the stitches. Cut out the image. Die-cut flowers from blue card and leaves from army green, decorate the heart of the flowers with an adhesive pearl. Die-cut the baby shoes from night blue and pearly white card. Work the shoes with baby blue ink and make laces with a rope. Stamp the text onto design paper and finish off with the small bear.

Cut a 29 x 15 cm purple strip and score lines at 5 cm, 7 cm, 22 cm and 24 cm from the left. Cut pearly white card into a 14.4 x 14.4 cm square and two 4.4 x 14.4 cm strips. Cut design paper into a 14 x 14 cm square and two 4.1 x 14 cm strips. Die-cut Anja's rectangle from pearly white, work with distress ink shaded lilac and cut out along the embossed parts. Die-cut an oval from pearly white and cut out the image. Die-cut the birdhouse from kraft brown and work with distress ink vintage photo. Die-cut the topiary set from army green and work with distress ink peeled paint; die-cut the trunks from kraft brown. Die-cut the flower pots from lavender card and work with distress ink pumice stone. Die-cut the fence from kraft grey and work with distress ink vintage photo. Die-cut the watering can from Metallic steel, the leaves from light green and work them with distress ink peeled paint. Die-cut the birds from design paper and work with distress ink pumice stone. Die-cut the rake from kraft brown and Royal silver. Die-cut the cat from kraft black and the butterflies from carnation white. Cut the butterflies and birds out of the decoupage sheet.

19.5 x 15 cm

15 x 15 cm

29 x 15 cm

Valentine Friend

By Marleen van der Most
handmadebymarleen.blogspot.nl



Materials:

Collectables: COL1353 (Cat), COL1378 (Balloons), COL1385 (Eline's Sheep-used for clouds), COL1397 (Charming Alphabet), Craftables: CR1351 (Hearts-basic shapes, used as base for balloons), Creatables: LR0404 (Tiny's Basket), Design folder: DF3412 (Balloons), Inkpads: Memento Tuxedo black, Stazon opaque cotton white, Versa Color 57 old rose-used for cheeks of the cat), Pretty Papers bloc: PB7047 (Eline's Peach & Mint), Papicolor

card: Original raven black (901), pearly white (930), blossom (934), Recycled kraft grey (322), Glitter paper: CA3123 (red), Parchment paper, Silver card for the cat's bell, Distress tool, White fineliner

Fold a 21 x 10.5 cm white single-fold card and layer 20.5 x 10 cm on top. Cut 20 x 9.5 cm white card and cut widthwise at 11.5 cm high. Emboss both parts with the Design folder, work the edges with a distress tool and adhere to the card (smallest part at the top, to hide the seam). Die-cut three clouds from parchment paper and adhere. Use the two largest straight heart shape dies at the same time to cut out a frame; adhere with foamtape. Die-cut thirteen balloons from glitter paper and adhere in a fanciful way with glue and foamtape. Die-cut the basket and the kitten and adhere. Stamp the ropes onto white card, cut out and attach near the balloons. Finally cut out the letters and attach to the basket.