

The Collection #37



Cover card

By Marleen van der Most
handmadebymarleen.blogspot.nl

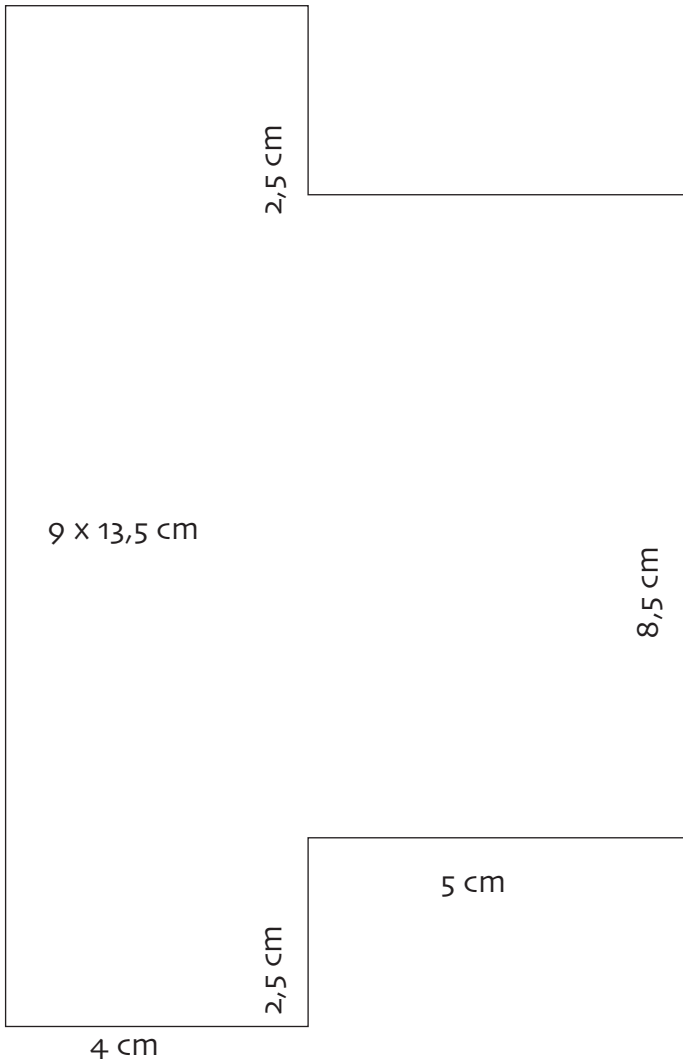


Materials:

Collectables: COL1404 (Castle),
Craftables: PL1516 (Algemeen),
CR1358 (Flower set-Sweet),
Creatables: LR0302 (Princess
Carriage), Die-cut and embossing
machine, Clear stamps: PL1508
(Text-individu), Inkpad: Memento

Copy the pattern onto pearly white card and cut out. Cut 12 x 8.8 cm blue design paper and adhere to the centre. Tear and cut a 14.5 x approx. 3.5 cm strip from yellow design paper and adhere. Cut two 11.5 x 2 cm strips from striped design paper and adhere. Die-cut the castle from recycled kraft, light pink and baby pink card, work with ink and stamp bricks onto the castle wall. Adhere the castle together with pieces of ribbon as curtains in between. Adhere the castle to the card. Die-cut the carriage from silver-coloured and light pink card and design paper, adhere and adhere to the card. Cut out the princess and place her in front of the carriage. Finish off.

tuxedo black, StazOn opaque cotton white and Versa Color 57 old rose, Decoupage sheet: EWK1242 (Buddies-Girls), Pretty Papers bloc: PK9131 (Celebrations), Papicolor card: Original light pink (923), pearly white (930), baby pink (959), Recycled kraft grey (322), Silver paper, Gems, Ribbon: JU0934 (sweet lace-tiara), Wax cord



X x X cm

2.5 cm

2.5 cm

12 cm

12 cm

2.5 cm

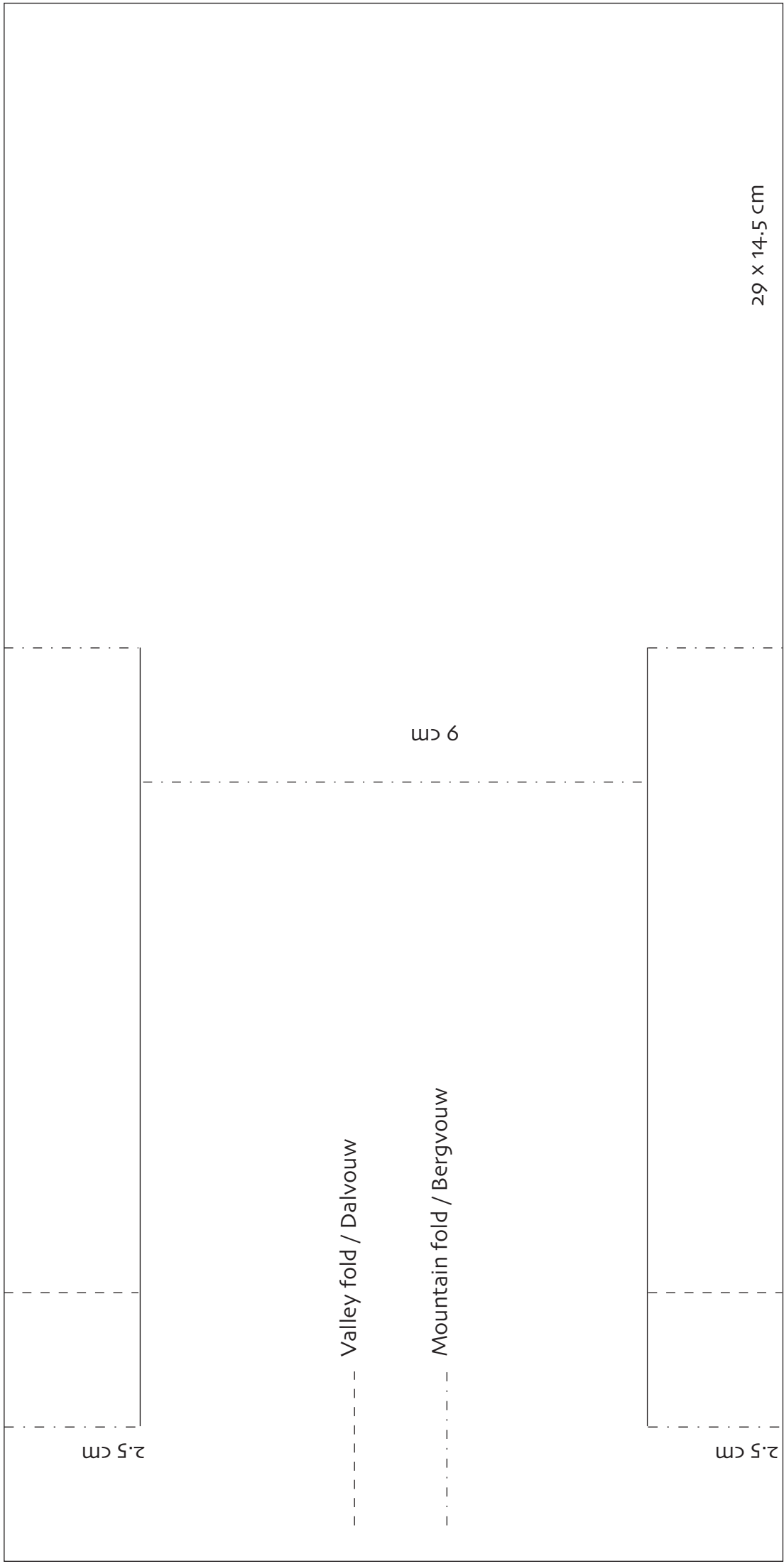
9 cm

2.5 cm

29 x 14.5 cm

--- Valley fold / Dalvouw

-.-.- Mountain fold / Bergvouw



By Astrid Schipper
astridschipper.blogspot.nl



15 x 15 cm

Materials:

Creatables: LR0383 (Petra's Candle), LR0408 (Tiny's Swan), LR0409 (Tiny's Cattails), Die-cut and embossing machine, Decoupage sheet: IT583 (Tiny's Swans-1), Pretty Papers bloc: PK9130 (Country Style), Papicolor card: Original pearly white (930), PanPastel: 620.5 Phthalo Green and 220.1 Hansa Yellow Ex Dark

(wicker), 780.5 Raw Umber (cattails), 220.5 Hansa Yellow Bright (cygnets), 280.5 Orange (bill) en 800.5 Black, Silk Lace: JU0914 (white), Tulle: JU924



16 x 12 cm

Materials:

Craftables: CR1334 (Basic rectangles), Creatables: LR0386 (Border-Retro), LR0408 (Tiny's Swan), LR0409 (Tiny's Cattails), Die-cut and embossing machine, Pretty Papers bloc: PK9130 (Country Style), Papicolor card

Original: pearly white (930), Clear stamps: TC0835 (Edge of the pond), Inkpad: Versafine black, PanPastel: 520.1 Ultra Blue Extra Dark and 580.5 Turquoise (water), 560.8 Phthalo Blue Tint and 470.8 Violet Tint (sky), 820.5 Neutral Grey (stones), 620.5 Phthalo Green and 220.1 Hansa Yellow Ex Dark (wicker), 780.5 Raw Umber (cattails), 220.5 Hansa Yellow Bright (cygnets), 280.5 Orange (bill) en 800.5 Black, Tulle: JU924

Cut a 15 x 15 cm white square and a 15 x 18 cm white strip, score folds at 0.5 cm, 1.75 cm, 3 cm, 15 cm, 16.25 cm and 17.5 cm (the strip is for the back). Cut 14 x 14 cm green design paper and die-cut/emboss the white square with the Creatable. Layer the three squares together and cut out the centre. Fold the white strip and adhere yellow design paper to its centre. Die-cut/emboss the Creatable circle from green design paper and layer the picture behind. Adhere the circle to the centre of the strip. Then adhere the strip to the back of the card. Die-cut/emboss from white card: the swan 2x, the cygnets and the cattails 2x. Colour them with PanPastel. Cut off the wings of one swan and adhere with 3D-kit to the other swan. Adhere the swan, cattails and cygnets to the card. Complete the card with a bow.

Cut a 12 x 16 cm white rectangle and 11 x 15 cm design paper, layer together. Cut a 9 x 13 cm white rectangle. Die-cut/emboss the Creatable border and layer the border behind the white rectangle. Take the biggest Craftables rectangle, place the decorative rectangle inside and die-cut both at the same time from white card; use only the frame. Stamp an image onto an 8.3 x 12.3 cm white rectangle and colour the image in with PanPastel. Adhere the frame around the stamped image and then onto the white rectangle and finally onto the card using 3D-tape. Die-cut/emboss from white: the swan 2x, the cygnets and the cattails 2x; colour them with PanPastel. Cut off the wings of one swan and adhere with 3D-kit to the other swan. Adhere the swan, cygnets and cattails to the card. Complete the card with a bow.

Stand for the card: cut a 7.5 x 15 cm white strip and score folds at 5 cm and 10 cm. Cut off the bottom of the two flaps slantwise and adhere the centre of the strip to the back of the card.

By Petra van Dam
hobbykaartenpetra.nl



21 x 14 cm

Materials:

Creatables: LR0383 (Petra's Candle), LR0406 (Petra's Water lily), LR0407 (Petra's Beautiful Border), LR0409 (Tiny's Cattails), Die-cut and embossing machine, Distress ink: peeled paint, weathered wood, tumbled glass, Decoupage sheet: IT584 (Tiny's Swans-2), Pretty Papers bloc: PK9114 (Kraft), Papicolor card:

Original pearly white (930), nut brown (939), night blue (941), mocca (953), army green (954) and baby blue (956), Metallic pearl-white (330) and ivory (331), Brilliant champagne (163), Embossing tool with large ball, Shiny pearls: D105 (pink), D107 (blue), Glitter diamond, Lace: K1056 (ivory 35 mm)

Cut a 21 x 28 cm night blue strip. Fold in half to create a 21 x 14 cm single-fold card. Score (whole width) at 5 cm up from the bottom edge. Make a 5 cm incision into the fold, starting at the bottom. Fold both flaps inside and attach to the sides. Turn the card, making it a top-fold card; both flaps are now inside on the right-hand side.

Front of card:

- Cut 13.8 x 15.5 cm mocca card and adhere on the bottom, align with the dark blue card.
- Cut a 21 x 15 cm baby blue strip. Adhere the stencil to the top, at the back of the baby blue card, using removable tape. Die-cut/emboss the border with the machine. Work the pattern with distress ink weathered wood.
- Make a valley fold and after 1 cm another one at the bottom, align with the embossed pattern. Cut off the baby

blue card at a height of 13.5 cm.

- Die-cut/emboss from army green: 1x the leaf and 2x the cattails. The brown tops of the cattails are cut from nut brown and kraft card.

Water lily: die-cut/emboss the two big flower petals 2x from pearly white and the stamen 2x from ivory card.

Tip: lay the flower petal in the palm of your hand. Use an embossing tool with a large ball and make rotating movements in the heart of the flower petal, giving it a natural shape. Adhere two flower petals (two by two) rotated together. Adhere the flower as shown.

- Die-cut/emboss the square frame from pearl-white and work with distress ink weathered wood and tumbled glass.

- Die-cut/emboss the square frame with two dies together from ivory card. The round stencil cuts out the centre.
- Cut a 12.5 x 12.5 cm baby blue square and adhere behind the pearl-white.
- Cut the picture with frame from the decoupage sheet. Work the edges with glitter glue. Set aside to dry. Then adhere the picture to the pearl-white. Mount the champagne-coloured frame with 3D-kit around it.
- Adhere the leaf behind the baby blue square and then adhere the cattails and finally the water lily. Set aside to dry.
- Adhere the lace to the baby blue card.
- Then adhere the part with the picture to the baby blue card.
- Finish off with pearls.



14,75 x 20 cm



Materials:

Creatables: LR0383 (Petra's Candle), LR0406 (Petra's Water Lily), LR0407 (Petra's Beautiful Border), LR0408 (Tiny's Swans), LR0409 (Tiny's Cattails), Die-cut and embossing machine, Distress ink: for the leaf and cattails peeled paint and vintage photo; for the swan black soot,

rusty hinge, milled lavender and pumice stone, Decoupage sheet: IT584 (Tiny's Swans-2), Papicolor card: Original pearly white (930), mocca (953) and army green (954), Metallic pearl-white (330) and ivory (331), White parchment paper, Shiny pearls: D109 (white mother of pearl), Glitter diamond, Lace: DK2987 (with flowers pale yellow/ivory), Marabou feather: 2802 (white), PerlenPen: magic transparent weiss 100

Photo 1 and 2: cut a 20 x 29.5 cm mocca strip and fold in half. Unfold.

Front panel: cut off 2 cm horizontally along the top. Score (whole width) at 5 cm up from the bottom. Make a 5 cm incision into the fold, starting at the bottom. Fold both flaps inside.

Front panel: cut 12.5 x 14 cm blue design paper. Adhere to mocca, align with the bottom.

Inner side: cut 14.2 x 14.2 cm yellow design paper and for the flap 4.5 x 14.2 cm blue design paper. Adhere the lace to the flap. Adhere flaps to the sides (leave centre open).

Photo 3 and 4: cut out the picture with the frame border of the decoupage sheet. Work the border with glitter glue. Die-cut/emboss the beautiful border 2x from pearl-white card using two dies at the same time. Lay the picture on the cutting mat. Determine the centre carefully. Adhere the beautiful borders on each side of the picture. Place the layers onto yellow design paper. Place the stencil on the embossed part and trace the border. Cut out.

Photo 5 and 6: die-cut/emboss the leaf from army green. Adhere it between the yellow design paper and behind the picture, as shown. Die-cut/emboss the cattails: 2x from army green and 1x from kraft and ivory. Create water drops with the PerlenPen. Set aside to dry.

Photo 6, Bottom: die-cut/emboss the beautiful border from 6 x 15 cm pearl-white card. Cut off the bottom in a straight line at a height of 4.7 cm. Cut 2 x 15 cm yellow design paper and adhere to the bottom onto the pearl-white. Die-cut/emboss the beautiful border from pearl-white card, using two dies at the same time. Adhere to the pearl-white and design paper strips. Finish off the bottom with lace. Adhere the layers to the card using 3D-kit.

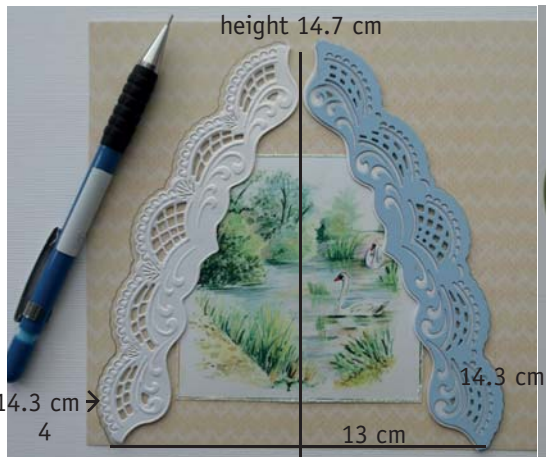
Water lily: for the instructions see card 1. Die-cut/emboss the two large flower petals 2x from vellum and the stamen 2x from pearly white card. Die-cut/emboss the swan 3x from pearl-white card. Work the parts with distress ink and adhere together in 3D. Set aside to dry well and then adhere to the card, align with the base.



1 en 2



3



4



5



6

By Marleen van der Most
handmadebymarleen.blogspot.nl



15 x 15 cm

Materials:

Collectables: COL1400 (Dinosaurs), COL1404 (Castle), Craftables: PL1515 (December), PL1516 (Algemeen), Die-cut and embossing machine, Clear stamps: PL1508 (Tekst-individu), Inkpad: Memento tuxedo black, StazOn jet black and opaque cotton white,

Versa Craft 154 chocolate, Decoupage sheet: EWK1241 (Buddies-Boys), Pretty Papers bloc: PK9131 (Celebrations), Papicolor card: Original red (918), pearly white (930), nut brown (939), Recycled kraft grey (322), Silver-coloured paper, Wax cord

Cut a 15 x 15 cm white card and adhere 14 x 14 cm design paper on top. Adhere 12.5 x 6.5 cm design paper to the bottom half of the card and blue design paper to the top half. Die-cut the dinosaur from green card and the spines from yellow and adhere to the card. Die-cut the castle from brown, kraft and red card, work with ink and stamp bricks onto the castle wall. Stamp the fence onto silver-coloured paper, cut out and adhere to the castle. Adhere all parts together. Cut out the knight and adhere to the card. Finish off the card.

By Chantal Klokgieter
chantalcrea.blogspot.nl



21 x 14,8 cm

Materials:

Collectables: COL1403 (Robot), COL1397 (Chest Alphabet), COL1384 (Balloon), Die-cut and embossing machine, Clear stamp: CS0956 (Brick Wall), Inkpad: Memento summer sky, Pretty Papers blocs: PK9131 (Celebrations), PK9114 (Kraft),

Papicolor card: Original silver grey (902), metallic (334), turquoise (367), pearl white (330), Gems: JU0952 (gold-colour, light and dark), White gel pen, Black pen, Black felt tip, Silver wire

Cut a 29.6 x 21 cm (width x height) silver grey strip and score at 14.8 cm from the left. Cut 20.5 x 14.3 cm and 3 x 14 cm (2x) kraft, 20 x 13.8 cm light blue, 2.5 x 14 cm (3x) design paper and 13.5 x 13.5 cm pearly white. Stamp the bricks with Memento summer sky onto pearly white card. Die-cut the robots from metallic and turquoise, the arms and necks from mint green and the chest letters rectangles from lilac. Stamp the letters onto them. Stamp onto metallic: the dots for the belly, the back of the head, the back and the nose of the robots. Adhere the robots together and work them with a white pen and the wheels with a black felt tip. Draw tacking stitches along the border of the narrow strips of design paper and along the border of the stamped pearly white paper. Adhere the kraft and light blue cards together with glue. Adhere the stamped pearly white card in the centre of the light blue card. Adhere the narrow strips and chest letters as shown. Place two letters in the hands of the robots. Cut silver-coloured wire and glue behind the neck of the balloon. Finish off the card with glitter stones.



14,8 x 15 cm

Materials:

Collectables: COL1403 (Robot), COL1397 (Chest Alphabet), Creatables: LR0329 (Flags), Die-cut and embossing machine, Clear Stamp: CS0956 (Brick Wall), Inkpad: Memento summer sky, Pretty Papers blocs: PK9131 (Celebrations), PK91114 (Kraft),

Papicolor card: turquoise (932), metallic (334), turquoise (367), Gems: JU0952 (gold-coloured, light and dark), White gel pen, Black pen, Black felt tip

Cut a 29 x 15 cm (width x height) turquoise strip and score at 14.5 cm from the left. Cut 9.5 x 12.9 cm pearly white, 14.4 x 14 cm and 3.5 x 14 cm kraft, 14 x 13.5 cm, 3 x 14 cm and 9.5 x 2.7 cm design paper. Die-cut the robot from metallic and turquoise, the arms and necks from pink and mint green, the flags from kraft and the chest letter rectangles from pink; stamp the letters onto them. Stamp the stripes and dots of the belly and nose of the robots onto metallic and turquoise. Adhere the robots together and work them with a white pen and the wheels with a black felt tip. Place the arm of one robot through the arm of the other. Stamp the bricks with Memento summer sky onto pearly white card. Adhere the card, kraft and design paper to the base card as shown. Adhere part of the robot head between the narrow strips of kraft and design paper. Add glitter stones to each side of the flag. Adhere the chest letters with foam pads. Finish off the card.



Materials:

Collectables: COL1403 (Robot), COL1397 (Chest Alphabet), COL1378 (Balloon), Die-cut and embossing machine, Inkpads: black, Pretty Papers bloc: PK9131 (Celebrations), Papicolor card: blue (620), metallic (334), turquoise (367), Gems: JU0952 (gold-coloured, light and dark),

White gel pen, Black pen, Black felt-tip, Silver wire

Cut a 29 x 15 cm (width x height) blue strip and score at 14.5 cm from the left. Cut 14 x 14.5 cm and 3.5 x 13.5 cm corrugated card, 13.5 x 14 cm, 12.9 x 13.7 cm and 3.6 x 13.4 cm design paper and 6 x 3.5 cm mint green paper. Use a black pen to draw tacking stitches along the edges of the narrow design paper strip. Die-cut the chest letter rectangles from blue and stamp the letters onto them. Die-cut the balloon from light lilac and emboss. Adhere the robot together and work with a white pen and the wheels with a black felt tip. Adhere the corrugated card and design paper to the base card as shown. Stamp the text onto the mint green paper and place it in the hand of the robot using foampads. Cut a piece of silver-coloured wire and adhere it with glue behind the neck of the balloon. Adhere the chest letters and the robot arm to the base card using foampads. Finish off the card with glitter stones.



Materials:

Collectables: COL1382 (Easter Eggs), Craftables: CR1355 (Grass), Flower sets: CR1356 (Fancy), CR1358 (Sweet), Creatables: LR0410 (Goose), Die-cut and embossing machine, Clear stamp: CS0954 (Vrolijk Pasen), Inkpad: Memento angel pink, Distress ink: antique linen, dried

marigold and spiced marmalade, Decoupage sheet: EWK1240 (Country Style Flowers), Pretty Papers blocs: PK9130 (Country Style), PK9114 (Kraft), Papicolor card: pearly white (930), light pink (923), spring green ((954), light green (947), grass green (907), Gems: JU0937 (pink and light pink)

Cut a 29.7 x 15 cm (width x height) pearly white strip and score at 14.8 cm from the left. Cut 7 x 3.5 cm light pink and 14.3 x 14.5 cm and 13.8 x 14 cm design paper. Use a circle cutter to cut a 10 cm Ø from the centre of the 13.8 x 14 cm design paper. Cut a lilac circle rim with an outer measurement of 10.6 cm Ø and an inner measurement of 10 cm Ø. Layer this rim around the aperture in the design paper. Die-cut the flowers from pearly white, lilac and mint green and the eggs from design paper and pearly white; emboss them. Work the eggs with Memento angel pink. Work the geese with distress ink antique linen (for the fur), dried marigold (for the paws) and spiced marmalade (for the bill). Die-cut the branch from kraft and green colours. Cut off the green leaves and layer onto the brown ones. Draw white veins onto the leaves. Cut extra butterflies and a flower from the decoupage sheet and adhere. Stamp the text onto 7 x 3.5 cm light pink card. Finish off with flowers and a glitter stone.



Materials:

Collectables: COL1351 (Chicken and Easter Eggs), COL1354 (Rabbit), Craftables: CR1355 (Grass), Flower sets: CR1356 (Fancy), CR1358 (Sweet), Creatables: LR0410 (Goose), Design Folder: DF3404 (Chicken wire), Die-cut and embossing machine, Pretty Papers blocs: PK9130 (Country

Style), PK9114 (Kraft), Clear stamp: CS0954 (Vrolijk Pasen), Distress ink: antique linen, dried marigold, spiced marmalade, vintage photo, Papicolor card Original: cream (937), spring green (954), light green (947), grass green (907), mocca (953), nut brown (939), light pink (923), blossom (934), red (918), Gold card, White gel pen

General:

How to make chicken wire.

Die-cut the stencil of chicken wire, then place the stencil next to the just cut-out wire, securing the stencil with removable tape. Repeat till the whole piece of paper consists of chicken wire. Layer the chicken wire on top of the design paper of the window in the base card.

Cut a 29.6 x 15 cm (width x height) cream-coloured strip and score at 14.9 cm from the left. Cut 7.5 x 3.5 cm kraft and stamp the text. Cut 14.4 x 14.5 cm, 13.9 x 14 cm and 13.4 x 13.5 cm design paper. Adhere the layers to the card as shown. After drying cut a 7 x 6 cm window out of the front panel of the base card. Die-cut the chicken wire from a piece of 7.5 x 6.5 cm gold-coloured card. Die-cut the shapes from the colours needed, the eggs from design paper and the wooden planks from kraft, work these last ones with distress ink vintage photo. Adhere the animals together and work them with a white gel pen and the cheeks of the rabbit with a dark pink coloured pencil. Use a white gel pen to place three white dots on the cheeks of the rabbit. Work the geese with distress ink antique linen, dried marigold and spiced marmalade. Die-cut the branch from kraft and green colours. Cut off the green leaves and layer them onto the brown ones. Draw white veins onto the leaves. Adhere the wooden planks along the aperture in the card using foampads. Cut an opening in the chicken wire and place the rabbit behind it. Cut 8 x 7 cm design paper and layer it with foampads on the inside of the card behind the aperture. Finish off the card.

General:

Die-cutting a frame: place two successive dies carefully in each other and die-cut them at the same time.



15 x 10 cm

Materials:

Craftables: CR1321 (Punch Die-Stars), CR1334 (Basic Rectangles), Flower sets: CR1356 (Fancy), CR1357 (Funky), CR1358 (Sweet), Die-cut and embossing machine, Clear stamp: CS0966 (Twinkle twinkle little star), Stamping paper, Inkpad, Pretty

Papers bloc: PK9131 (Celebrations), Papicolor card Original: pearly white (930), Diamond gems: JU0983 (blue and light blue), Button twine

Cut a 10 x 15 cm pearly white top-fold card. Cut 8.5 x 13.5 cm design paper and mat on design paper with a different colour/design. Adhere the layers to the card using 3D-foampads. Stamp a text, die-cut it with a Craftables rectangle and mat on design paper. Die-cut stars and adhere. Tie button twine under one of the stars and attach a diamond gem. Die-cut/emboss flowers and leaves from design paper. Attach a bow of button twine under the flowers and finish off with a diamond gem.



10,5 x 15 cm

Materials:

Craftables: CR1334 (Basic Rectangles), Flower sets: CR1356 (Fancy), CR1357 (Funky), CR1358 (Sweet), Creatables: LR0338 (Pussycat), Die-cut and embossing machine, Clear stamps: CS0962 (Pussycat), Stamping paper, Inkpad, Pretty Papers bloc: PK9131 (Celebrations), PK9114 (Kraft), Papicolor card Original: pearly white (930), raven black (901), Button twine, Wiggly eyes

Cut a 10.5 x 15 cm top-fold kraft card. Cut 9.5 x 13.5 cm design paper and mat on white card. Stamp a text. Die-cut a frame from design paper, layer around the text and then mat on design paper. Die-cut a black cat, make a bow with button twine and attach wiggly eyes. Die-cut/emboss flowers and leaves from design paper and pearly white card.

By Chantal Klokgieter
chantalcrea.blogspot.nl



Materials:

Collectables: COL1310 (Birdhouse), Creatables: LR0257 (Branch and Flower 2), Die-cut and embossing machine, Inkpad: Memento black, Distress ink: vintage photo, Pretty Papers blocs: PK9105 (Belle Fleur), PK9114 (Kraft), Papicolor card Original: carnation white (903), light green (947), grass green(907), Charms: JU0926, Flowers: RB2217, Distress tool or scissors, Gems: JU0938 (light

blue and blue), Ribbon: JU0922, Coloured pencils or felt tips: lilac, light blue, dark blue, light and dark green, Doily, Rope: JU0949

Cut 10 x 15.8 cm kraft card; cut off the corners, place the ruler aslant at 3 cm. Cut 9.5 x 15.3 cm carnation white; cut off the corners, place the ruler aslant at 2.5 cm. Cut 9 x 14.8 cm (cut off the corners, place the ruler aslant at 2 cm), 8.9 x 4.5 cm and 8.9 x 1.5 cm design paper. Die-cut and emboss the birdhouse from kraft. Stamp the edges of the roof with distress ink vintage photo and the birds with black Memento. Work the edges of the birdhouse with vintage photo. Colour the birds with coloured pencils or felt tips: lilac, light blue, dark blue, light green and dark green. Die-cut the branch from kraft and green colours. Cut off the green leaves and layer onto the brown ones. Draw white veins onto the leaves. Distress all edges with a distress tool or a pair of scissors. Then work all edges with distress ink vintage photo and the carnation white card with Memento summer sky. Adhere the card, design papers and doily to the card as shown. Finish off the card with roses and glitter stones.