

# The Collection #51



By Sigrid Klingenberg  
[sigridklingenberg.blogspot.com](http://sigridklingenberg.blogspot.com)

## Materials used for all cards:

Craftables: CR1390 (Basic shape-stitched Rectangle), Creatables: LR0460 (Tiny's Water lily-large), LR0461 (Tiny's Frogs and Dragonfly), Die-cut and embossing machine, Inkpad: black, Distress ink: forest moss, gathered twigs, peeled paint, pine needles, salty ocean, shabby shutters, spun sugar, tattered rose, worn lipstick, Design paper: PK9144 (Country Flowers), Papicolor card: Original pearly white (930) and moss green (951), Recycled kraft grey (322), Stamping paper: wit, Copic markers, Adhesive pearls: pink, Rope

## Colouring in with Copic Markers:

Die-cut the water lily from pearly white card and colouring in with distress ink spun sugar, tattered rose and worn lipstick.

Die-cut the leaves of the water lily also from pearly white card, but colour them in with peeled paint, shabby shutters, forest moss, pine needles and gathered twigs.

Die-cut the frogs from moss green card and colour them in with distress ink forest moss, pine needles en gathered twigs.

Die-cut the dragon fly from pearly white and colour them in with distress ink worn lipstick of salty ocean.

Die-cut the body of the dragon fly from kraft and colour it with distress ink gathered twigs.

Adhere it to the pearly white dragonfly using 3D-glue.

Finish off the cards with die-cut water lilies, frogs, dragonflies, adhesive pearls and rope.



### Extra needed for cover card:

Creatables: LR0459 (Tiny's Water lily-small), Clear stamps: TC0850 (Tiny's Border with water lilies)

Cut 13.5 x 13.5 cm design paper and mat on pearly white. Die-cut 10.3 x 10.3 cm and a 13.5 x 3.5 cm strip from design paper. Adhere the layers to the card.

Stamp the image onto a die-cut rectangle. Colour in and mat on design paper. Adhere the layers to a 15 x 15 cm single-fold kraft card.

Cut 1.5 x 6 cm en 1.3 x 5.5 cm strips from design paper, cut out a triangle and adhere.

Finish off the card.



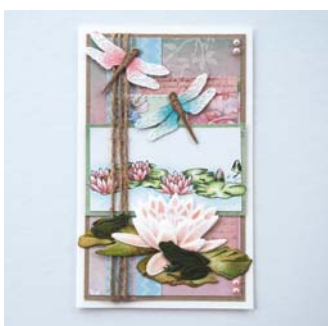
### Extra needed for this card:

Creatables: LR0459 (Tiny's Water lily-small), Clear stamps: TC0581 (Tiny's Border with water lilies)

Cut 19.5 x 10 cm design paper and mat on grey kraft. Die-cut a rectangle from design paper.

Cut from design paper: 9 x 7 cm and two 1.5 x 10.5 cm strips. Stamp the image onto 15 x 5.5 cm white stamping paper, colour in and mat on design paper.

Adhere the layer to a 21 x 11.5 cm single-fold card and finish off.



### Extra needed for this card:

Clear stamps: TC0581 (Tiny's Border with water lilies)

Cut 9 x 15.5 cm design paper and mat on grey kraft. Cut two 1.5 x 15.5 cm strips and a 6 x 10.5 cm rectangle from design paper. Die-cut a rectangle with the Craftables. Adhere the layers to the card and tie rope around.

Cut 9 x 5 cm from stamping paper. Stamp the image, colour in and mat on design paper. Adhere the layers to a 10.5 x 17 cm pearly white single-fold card and finish off.

13,5 x 13,5 cm

21 x 11,5 cm

10,5 x 17 cm

### Materials used for both cards:

Creatables: LR0457 (Petra's Circle with Bird), Die-cut and embossing machine, Design paper: PK9114 (Kraft), Distress ink: frayed burlap, Decoupage sheet: VK9553 (Birds), Papicolor card: Original: pearly white (930), nut brown (939) and army green (954), Metallic: ivory (331), Vellum: white



### Extra needed for this card:

Craftables: CR1290 (Tiny's Birdhouse), Creatables: LR0452 (Tiny's Foxgloves), Collectables: COL1423 (Picket fence), Design paper: PK9144 (Country Flowers), Distress ink: bundled sage, stormy sky, Papicolor card: Original: silver grey (902), dark blue (906), dark brown (938), blue (955) and baby blue (956), Metallic botanic (336) and gold (338), Flat-backed shiny pearls: D107 (blue), Lace: K1057 10 mm (ivory), Marabou feathers: 2802 (white), 2813 (olive green)

### 1 Folding the card

Use a blue A4-sheet (955). Fold in half and unfold again. Score (whole width) at 5 cm up from the bottom. Start at the bottom and make a 5 cm incision.

Turn the card, the fold is now at the top and the flaps are on the left.

Fold one flap inside and one to other side (this one will be used for the front of the card).

Cut twice 14.5 x 15 cm from blue zigzag design paper. One is for the inside and one will be used for the front of the card.

**Inside:** Adhere the blue design paper as per example. Adhere the white lace to the flap. Paste the flap on both sides (leave the centre open).

### 2 Front of card

Flap: Make a valley fold at 1 cm. Cut off the flap diagonally as shown.

Keep the cut-off triangle. It will be adhered to the flap again later on (see photo 4).

Adhere blue zigzag design paper to the front of the card. Cut 14.4 x 6 cm design paper with flowers and adhere to blue. Then adhere it on the right-hand side to the front of the card.

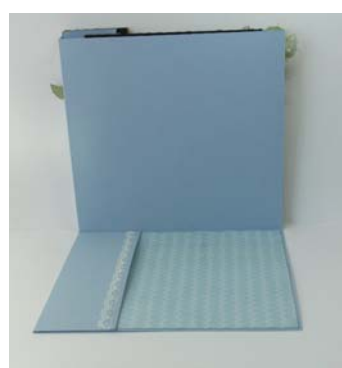
### 3

Die-cut/emboss the flower border (LR0457) from pearly white using two stencils (A + B) at the same time. Now the centre is cut out.

Fold the petals of the four flowers upwards and shape them.

Place the stencil (A) on the reverse side of baby blue card. Trace the outline in pencil and cut out. Adhere the picture to the baby blue card.

Die-cut/emboss with the small stencil four flowers from vellum and dark blue. Shape them. Adhere vellum to dark blue and finish off with a dark blue pearl. Adhere the pearly white flower border to light blue using 3D-glue. Allow to dry.



16 x 14,7 cm



4

Die-cut/emboss the flowers from dark blue, blue and baby blue, the leaves from army green, silver grey and botanic. Assemble the flowers as shown.

Die-cut/emboss the bird house from ivory, the birds from nut brown and kraft, the fence 2x from nut brown and gold.

**Fence:** Adhere gold (slightly overlapping) on nut brown. Cut a dark brown 2.4 x 12.5 strip and adhere to the back of the fence.

Allow to dry.

Set the card upright. Take the blue cut off triangle (see photo 2). Place it with the point aligned, and the bottom slightly downwards overlapping onto the flap. Adhere as per example.



**Extra needed for this card:**

Creatables: LR0399 (Tiny's Daffodil), LR0401 (Tiny's Tulip), LR0458 (Petra's Square with Nest), Distress ink: peeled paint, Design paper: PL9127 (Watercolour), Papicolor card: Original: mocha for wing top bird (953), Flat-backed shiny pearl: D109 (pearl white), Ribbon: JU0951 (Victorian Christmas), Sweet lace crown: JU0936, LB1020 green satin ribbon 6 mm, Adhesive stones: JU0932



**Folding the card**

Cut 21 x 29 cm from ivory. Fold in half and unfold again. Score (whole width) at 4 cm up from bottom. Start at the bottom and make a 4 cm incision. Fold the flaps inside (don't paste them yet).

Cut three 14 x 14 cm squares from green design paper (PK9127). Adhere two squares inside the card as per example.

Adhere white lace to the flaps as per example using double-sided tape. Finish off neatly with green satin ribbon.

Now turn the card over. The fold will be at the top with the flaps inside on the left. Adhere the third square to the front of the card.



Take a long piece of white lace and green ribbon and adhere on the left-hand side of the front and the back of the card. First adhere the white lace and finish off neatly with the green ribbon.

Fold the ends of lace and ribbon inside. Adhere them with double-sided tape on the outside.

Fold up the flaps and adhere the sides (leave the centre open).



Die-cut/emboss the square (LR0458) from pearly white card using two stencils (A + B) at the same time. Place stencil (A) on the reverse side of yellow design paper (PK9127). Trace the outline in pencil and cut out. Adhere the picture in the centre of the yellow paper. Adhere the pearly white decorative border using 3D-glue.



17 x 14,5 cm



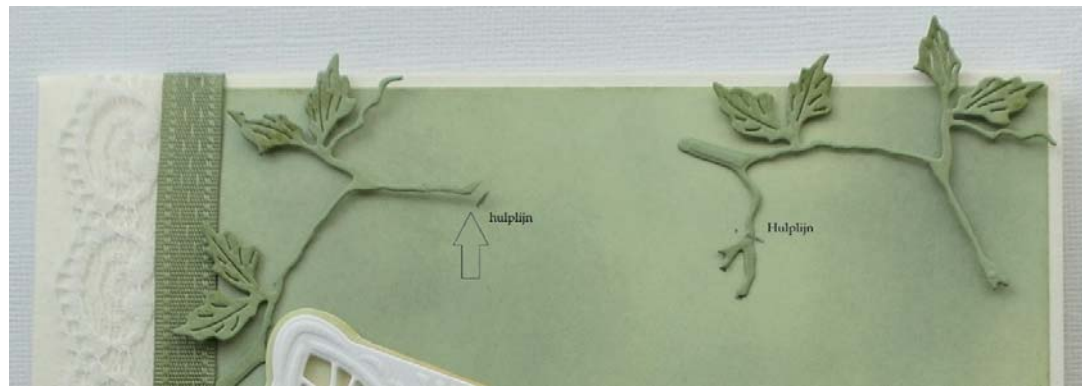
**Die-cut/emboss:**

The nest and the wing of the bird on the nest from kraft.  
 One bird from ivory and one from nut brown and its wing from caramel.  
 Twigs and leaves from nut brown and army green.  
 Tulips and daffodils from army green and ivory.  
 The small white flowers from pearly white and vellum (finish them off with a pearl).

Adhere the flowers together and adhere the wings to the birds with 3D-glue. Allow to dry.  
 Then adhere all layers as per example, following the numbers on the photo.



Start with the two army green twigs at the top of the green square. Measure it first. Draw a thin pencil line where the twigs should come.  
 Adhere the nest with the twigs and bird on the left-hand side of the pearly white square. Then adhere the complete frame to the card. Make a pretty arrangement of daffodils and tulips on the right-hand side, start with 1, then 2 et cetera.



By Astrid Schipper  
[astridschipper.blogspot.com](http://astridschipper.blogspot.com)

**Materials used for both cards:**

Creatables: LR0409 (Tiny's Cattails), LR0461 (Tiny's Frogs and Dragonfly), Die-cut and embossing machine, Distress ink: Victorian velvet, forest moss and faded jeans, Design paper: PK9127 (Watercolour), Papicolor card: Metallic pearlwhite (330), Card scraps: green, light green, blue and kraft



**Extra needed for this card:**

Creatables: LR0460 (Tiny's Water lily), Craftables: CR1355 (Grass), Decoupage sheet: IT593 (Tiny's Water lilies)

Cut a 15 x 15 cm white single-fold card. Cut 14.5 x 14.5 cm pink design paper and work the edges with distress ink Victorian velvet. Adhere together.  
 Die-cut/emboss the square and layer the picture behind.  
 Die-cut the cattails from green and kraft. Cut out the brown 'sigars' and layer onto the green ones.  
 Die-cut a grass border from light green. Tear a (water)border from blue card and adhere with the cattails and grass.  
 Die-cut/emboss the water lily from pink design paper and ink with distress ink Victorian velvet. Die-cut/emboss the frogs from light green and ink with distress ink forest moss. Adhere together and to the card.  
 Die-cut the dragonfly from grey design paper and ink with distress ink faded jeans and adhere.



**Extra needed for this card:**

Creatables: LR0459 (Tiny's Water lily), Decoupage sheet: IT594 (Tiny's Waterfalls), Adhesive pearls: pink

Cut a 15 x 15 cm white single-fold card. Cut 14.5 x 14.5 cm pink design paper and work the edges with distress ink Victorian velvet. Adhere together.  
 Die-cut/emboss the circle and shape the petals of the flowers.  
 Die-cut/emboss the small circle from pink design paper and layer the picture behind.  
 Adhere to the card. Die-cut the cattails from green and kraft. Cut out the brown 'sigars' and layer onto the green ones.  
 Tear a (water) border from blue card and adhere, together with the cattails.

15 x 15 cm

15 x 15 cm

Die-cut/emboss the water lily from pink design paper and work with distress ink Victorian velvet. Die-cut/emboss the frogs from light green and work with distress ink forest moss. Adhere together and to the card. Die-cut the dragonfly from grey design paper and work with distress ink faded jeans and adhere. Finish off the card with pearls.

By Marleen van der Most  
handmadebymarleen.blogspot.com

**Materials used for all cards:**

Collectables: COL1425 (Easter eggs), Craftables: CR1399 (Punch die-Eggs), CR1401 (Chicken wire), Clear stamps: KJ1705 (Vrolijk Pasen/Easter), Inkpad: Versamark, Embossing powder: white (Stampendous EP100), Design paper: PK9127 (Watercolour), Papicolor card: Recycled kraft grey (322) and green (328), Original: pearly white (930), cerise (933), and mustard yellow (948), Distress tool, Heat tool



**Extra needed for this card:**  
 Craftables: CR1331 (Basic shapes-Circle), CR1356 (Flower set-Fancy),  
 Creatables: LR0388 (Flower doily), LR0414 (Swirls & Leaves), Snow paper: CA3104, Decoupage sheet: VK9555 (Easter bunnies), Diamond gems: JU0392 (clear), Sweet lace: JU0934 (tiara)

Cut a 21 x 10.5 cm single-fold card from recycled kraft and mount 20.5 x 10 cm pearly white on top.  
 Cut 20 x 9.5 cm light yellow design paper, work the edges with the distress tool and adhere.  
 Cut a 21 x 4 cm strip from orange design paper, adhere with a piece of sweet lace behind.  
 Die-cut the chicken wire from kraft, trim and adhere slantwise.  
 Die-cut the flower doily from white and adhere with 3D-tape.  
 Die-cut a circle from light pink design paper and die-cut the picture with a smaller size. Adhere to the doily.  
 Die-cut the decorative easter egg from snow paper and a plain one from light pink design paper. Layer together and onto the card.  
 Die-cut two strips: 4.2 x 1.5 cm cerise and 3.8 x 1.3 cm light pink design paper, adhere together and layer onto the card.  
 Stamp the text onto recycled kraft, work with white embossing powder, trim leaving a narrow border and adhere.  
 Finish off the card with twigs, flowers and easter eggs.



**Extra needed for this card:**  
 Collectables: COL1354 (Bunny), COL1368 (Hedgehog, arms used), COL1422 (Eline's Baby animals), COL1423 Picket fence), Craftables: CR1352 (Basic shapes-Label), CR1355 (Grass), Creatables: LR0371 (Oval & Pop-up), LR0404 (Tiny's Basket), Inkpad: Versacolor: old rose

Cut a 30 x 15 cm pearly white strip and score folds at 7.5 en 15 cm to make an easel card.  
 Adhere a 15 x 15 cm pearly white square to the part of the card that is now folded and measures 15 x 7.5 cm.  
 Adhere two 14.5 x 14.5 cm squares from recycled kraft and adhere.  
 Cut 14 x 14 cm from light yellow and green design paper. Work both with the distress tool and adhere the yellow one to the top and the green one to the bottom.  
 Die-cut the chicken wire from pearly white, trim and adhere to the card slantwise. Make the labels as shown. Trace the inner line of the stencil onto the reverse side of orange design paper and cut out. Trim and work the edges with the distress tool. Stamp the text and work with embossing powder.

(57), Papicolor card: Recycled kraft brown (323), raven black (901), Diamond gems: JU0937 (light pink & pink), Gel pen: white, Wax cord: pink

Die-cut the grass border 2x from recycled green kraft and 2x from green design paper. Do the same with the pop-up blocks. Die-cut the picket fence from recycled brown kraft. Adhere two grass borders with the fence in between to the standing part of the card. Adhere the other two grass border to the bottom of the card using the pop-up blocks. By using these the card can still be folded. Finish off the card with Easter eggs, rabbits and a basket.

10,5 x 21 cm

15 x 15 cm

By Boukje van der Weit  
boukjesblog.blogspot.com



**Materials:**

Collectables: COL1357 (Family Owl, heart used), Craftables: CR1391 (Basic shapes-Ticket), CR1400 (Cross), Creatables: LR0437 (Petra's Twigs set), Die-cut and embossing machine, Clear stamps: CS0954 (Vrolijk Pasen/Easter), Inkpad: Archival jet black, Distress ink: walnut stain, Design paper: PK9132 (La Provence), PK9134

Use a 10 x 14.5 cm kraft card and mount 9 x 13.5 cm watercolour paper on top.

Die-cut the ticket from design paper and mat on white. Use the same stencil, trace the outline and cut out. Adhere to a larger size ticket of dark yellow watercolour paper, trace the outline of the stencil onto kraft and cut out. Adhere the layers to the card.

Die-cut and ink the cross, adhere to the card and decorate the centre with a die-cut heart and an adhesive stone.

Stamp the last word of the stamp only. Die-cut a twig and ink with walnut stain. Die-cut the leaves and work with Inka Gold. Roll up a piece of music paper, tie a rope around it and adhere, together with the twig and flower tuft. Make dots with a Perlenpen.

(Watercolour), Card: white and kraft, Music paper, Paper flowers: RB2234 (white), Perlenpen: eisweiss, Adhesive stones: JU0932, Rope, Viva Decor Inka Gold: jade, aquamarine

By Karin Joan

The instructions can be found at: [www.makerisme.nl/kjmd](http://www.makerisme.nl/kjmd)



10 x 14,5 cm

### General instructions:

Draw a border of clouds and cut out to use as a template. Dab distress ink tumbled glass onto the stamped images along the edge of the template. Keep replacing the template to create a blue cloudy sky.

Dribble glossy accents onto the leaves in the water to create the effect of waterdrops.

Die-cut CR1361 from PCP, stamp the waves and colour in. Use the same colour for the edges. Adhere to the card using 3D-tape. (see download of Collection #3 for the masking technique)

### Materials used for both cards:

Craftables: CR1352 (Basic shapes-Label), CR1361 (Stitched border-Clouds and Waves), CR1391 (Basic shapes-Ticket), Die-cut and embossing machine, Clear stamps: HT1616 (Hetty's Border-Pond), HT1617 (Hetty's Frogs), CS0986 (Texts-Opkikkertjes/Cheering up), Distress ink: tumbled glass, Inkpad: Archival jet black, Design paper: PK9144 (Country Flowers), Papicolor card: Original pearly white (930), Recycled kraft grey (322), Perfect Colouring Paper (PCP), Copic Markers, Glossy accents (Ranger), Jute twine: JU0839 (01)



14,5 x 14,5 cm

Cut a 14.5 x 14.5 cm top-fold card from kraft. Cut 13.75 x 13.75 cm and 12.5 x 12.5 cm design paper.

Mat the larger square on pearly white card. Die-cut two labels and a ticket from design paper. Stamp the text onto design paper, cut into a banner. Cut the banner also from design paper. Punch a hole into them and tie to the labels.

Cut 14.5 x 11.7 cm PCP. Stamp the images using the masking technique and colour in. Stamp two water lilies and a frog onto PCP, colour in and cut them out. Adhere them using 3D-tape. Mat the stamped image on design paper.



19,75 x 11,75 cm

### Extra needed for this card:

Creatables: LR0459 (Water lily), Distress ink: Victorian velvet, Papicolor card Original: light pink (923), moss green (951)

Cut a 19.75 x 11.75 cm top-fold card from kraft. Cut 19 x 11 cm design paper and mat on pearly white card.

Die-cut two labels and two tickets from design paper, stamp the text and tie to a larger label.

Die cut 18.5 x 10.5 cm from PCP. Stamp the images using the masking technique and colour them in.

Die-cut the water lily from moss green and light pink card. Work the flower with distress ink.

Stamp the frog onto PCP, colour in and cut out. Adhere to the card, together with the flower, using 3D-tape