

The Collection #54



By Marleen van der Most
handmadebymarleen.blogspot.com

Materials used for all cards:

Collectables: COL1433 (Eline's Seagull & friends), Craftables: CR1278 (Tiny's Sand castle set), Die-cut and embossing machine, Stamps: PL1514 (Zon, zee, strand), Distress ink: pumice stone, Inkpads: Versa Mark, Memento tuxedo black, Design paper: PK9146 (Cote d'Azur), Snowpaper: CA3104 (glitter), Papicolor card: Recycled kraft grey (322) and purple (327), Original raven black (901), carnation white (903), red (918), heather (922), turquoise (932) and Christmas red (943), Embossing powder: Stampendous white EP100, Enamel dots: PL4511 (cold as ice), Heat tool, Jute rope, White gel pen



Extra needed for this card:
Collectables: COL1432 (Eline's Seals), Craftables: CR1361 (Stitched borders-Waves and Clouds), CR1374 (Box card), CR1410 (Tiny's Lighthouse), Texts: PL1516 (Algemeen), Decoration paper: CA3127 (silver), Papicolor card:

Recycled kraft orange (325), Original cloud grey (929), pearly white (930), mouse grey (944) and light grey (957)

Cut the front and back of the box card from pearly white card. Copy the template in pencil onto design paper, cut out 3 mm smaller and adhere to the front. Cut out the background image into 9.2 x 14.5 cm and adhere. Die-cut the seal with ball and adhere. Die-cut a support strip from white. Die-cut the waves from light grey, making them 3.5 cm high and adhere. Die-cut the seal and adhere to the support strip too. Then adhere the strip to the card at 2 cm from the back of the card. Assemble the box card and finish off. Stamp the text onto the banner using Versa Mark and work with embossing powder.



Extra needed for this card:
Craftables: CR1331 (Basic shapes-Circle), CR1353 (Label XL & labels XS), CR1406 (Coral), CR1411 (Sea shell XL), Creatables: LR0417 (Porthole and steering wheel), Papicolor card: pale pink (923), Vellum



Copy the outer edge of the big seashell in pencil 2x onto recycled grey kraft and cut out. Die-cut the seashell 3x from carnation white and work with ink. Adhere one of the die-cut seashells onto one cut from kraft and adhere the other two onto each side of the other seashell cut from kraft. Only adhere together the small parts of the seashell, so that it can still be opened out completely. Cut a 19 x 2.5 cm carnation white strip and score folds at 1.5 - 3.5 - 10.5 - 12.5 cm. The 1.5 cm part is the glue strip, use it to glue the strip together in a rectangle to create a pop-up block. Adhere it to the bottom and back of the card. Cut two circles from design paper: 9 cm Ø en 7 cm Ø. Adhere the large one to the pop-up block and the other one to the bottom. Decorate the inside as per example. Die-cut a label from design paper for the front of the seashell card. Stamp a text using Versa Mark and work with embossing powder. Tie a piece of rope to the end of the seashell and add the label. Finish off.



Extra needed for this card:
Collectables: COL1432 (Eline's Seals), Craftables: CR1409 (Tiny's Fishing net), CR1410 (Tiny's Lighthouse), Distress ink: walnut stain, Design paper: PK9146 (Cote d'Azur), Decoration paper: CA3127

(silver), Papicolor card: Recycled kraft orange (325), Metallic pearlwhite (330), Original pale pink (923), cloud grey (929), pearly white (930), pale grey (957)

Copy the base of the pattern onto pearly white card, cut out and fold into a top-fold card. Copy the windows onto design paper, cut out, work with ink and layer silver-coloured card behind. Then adhere to the card. Copy the part below it onto grey design paper, cut out, work with ink and adhere.

Copy the hull of the boat onto pearlwhite card, cut out, work with ink and adhere to the base of the card using 3D-tape.

Copy the roof and the border for the hull onto turquoise card, cut out, work with ink and adhere.

Use 3D-tape for the border of the roof.

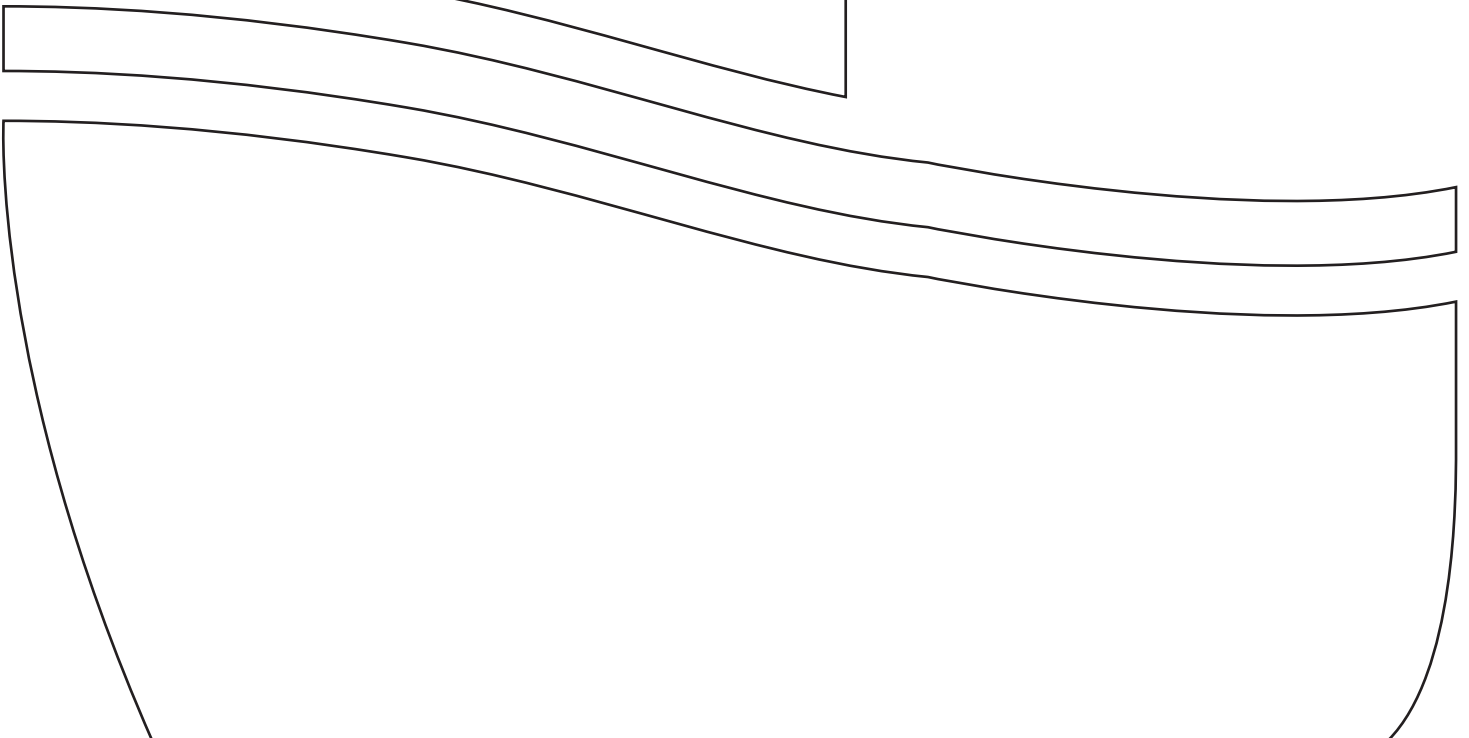
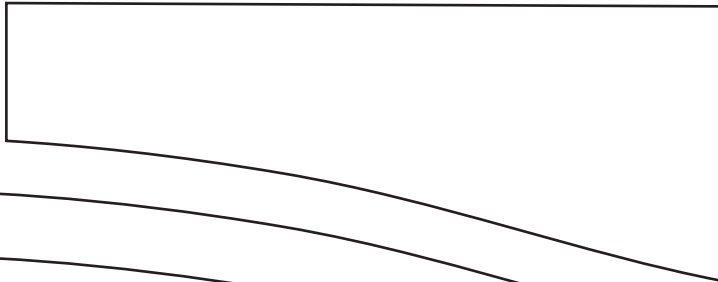
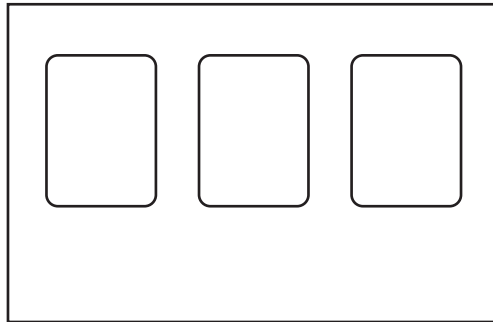
Tear two blue strips (the waves) from design paper and adhere to the boat with 3D-tape.

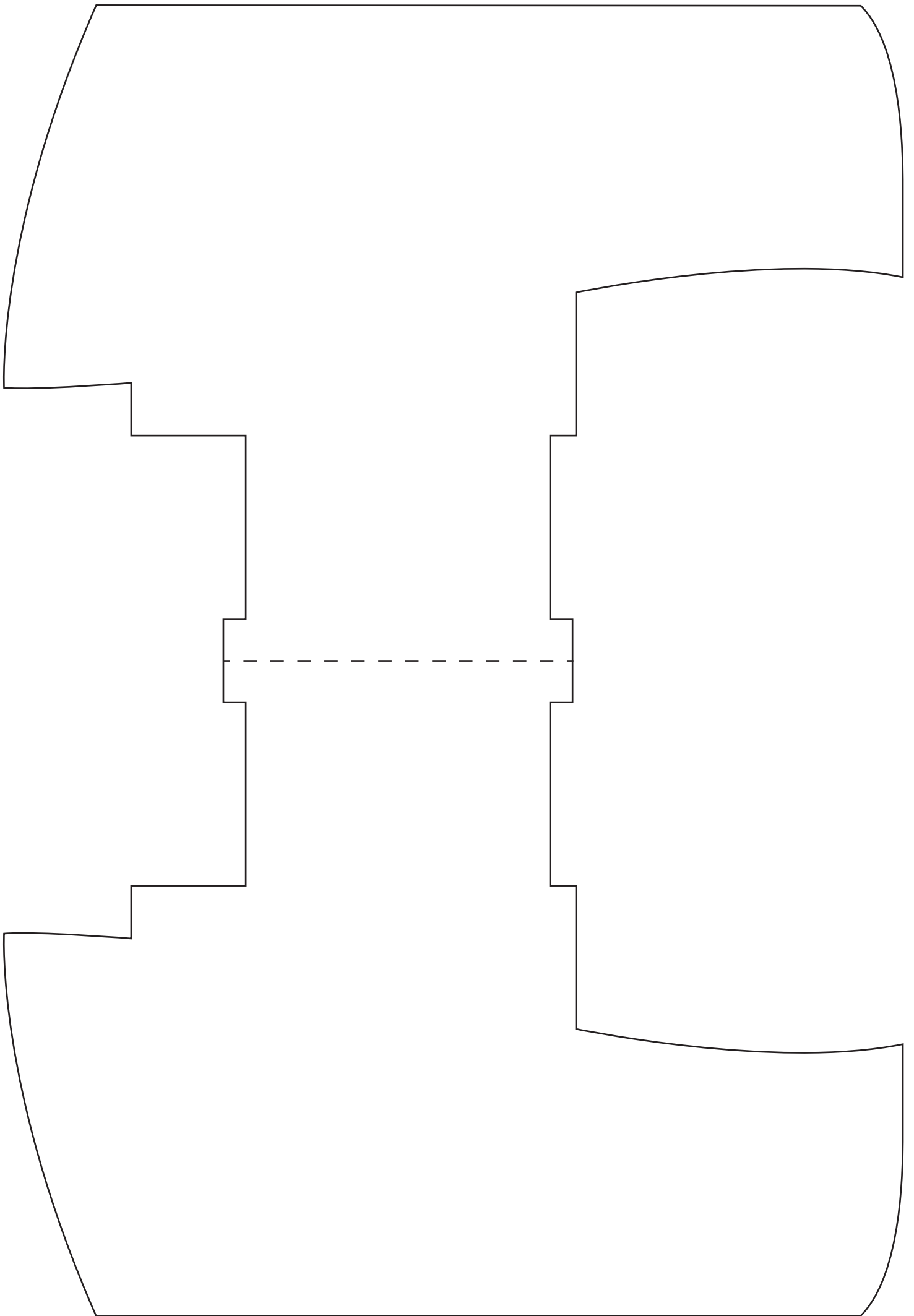
Die-cut the net from kraft, work with ink and cut off where needed. Adhere along the boat and between the waves.

Die-cut the animals, adhere them between the net.

Die-cut the seal and adhere.

Stamp a text onto the banner with Versa Mark and work with embossing powder. Finish off.





Materials used for all cards:

Craftables: CR1279 (Tiny's Ocean set), CR1409 (Tiny's Fishing net), Creatables: LR0470 (Anja's Square), Distress ink: pumice stone, Design paper: PK9146 (Cote d'Azur), Papicolor card: Metallic 330 (pearlwhite), Recycled kraft (grey), Cardstock: blue, green



Extra needed for this card:

Craftables: CR1278 (Tiny's Sand castle), CR1360 (Basic passe-partout-Circles), CR1410 (Tiny's Lighthouse), CR1411 (Seashell XL), Creatables: LR0471 (Anja's Shells), Clear stamps: TC0840 (Border-Dunes), Distress ink: stormy sky,

Cut a 15 x 15 cm blue single-fold card and two squares: white 14.5 x 14.5 cm and design paper 14 x 14 cm. Adhere together. Die-cut the shell from white, ink with distress ink pumice stone and adhere. Die-cut the two largest circles at the same time creating a border and layer the picture behind. Adhere to the card with a piece of a fishing net behind. Stamp the dunes and cut out. Die-cut/emboss the lighthouse from white and ink with stormy sky. Adhere the lighthouse and sand castle to the card. Die-cut/emboss the shells from white, adhere to kraft and ink with pumice stone. Finish off the card with seagulls and enamel dots.

Decoupage sheet Mattie's Mooiste: MB0166, Enamel dots: PL4511



Extra needed for this card:

Craftables: CR1410 (Tiny's Lighthouse), Creatables: LR0471 (Anja's Shells), Distress ink: stormy sky, Decoupage sheet Mattie's Mooiste: MB0167, Enamel dots: PL4511

Cut a 29 x 14.5 cm blue strip, first score a fold at 14.5 cm and then a diagonal line from the top right to the bottom left corner. Fold the slanted side forward, the card will be glued to this part. Cut a 14.5 x 14.5 cm blue card. Die-cut the largest border 2x from white card. Attach one to the card and the other one to the bottom of the card. Die-cut/emboss the small border from blue card and layer the picture behind. Adhere to the card. Trace the small border onto design paper and cut out. Ink the edges with distress ink pumice stone and adhere to the bottom. Die-cut/emboss the lighthouse from white card. Ink with stormy sky and adhere, together with the fishing net, to the card. Die-cut/emboss the shells from white, adhere to kraft and ink with pumice stone. Finish off the card with seagulls and enamel dots.



Extra needed for this card:

Craftables: CR1405 (Nautical rope), Creatables: LR0417 (Porthole, steering wheel), LR0473 (Sailing boat), Decoupage sheet Mattie's Mooiste: MB0166

Cut a 16 x 30 cm blue strip and score folds at 16 cm, 18.5 cm, 21 cm and 29 cm. Adhere the 1 cm glue strip to the back of the card. Cut two squares: white 15 x 15 cm and design paper 14.5 x 14.5 cm. Die-cut the large border from white and adhere all layers together. Die-cut/emboss the small border from blue and layer blue card behind. Then layer the fishing net and picture behind. Adhere the blue border to the card raised with 3D-glue/tape. Die-cut the sailing boat 2x and cut off the sail from one ship. Ink the sailing boat with pumice stone and then adhere the white sail raised with 3D-glue/tape. Finish off the card with the steering wheel, rope and seagulls.



Extra needed for this card:

Craftables: CR1278 (Tiny's Sand castle), CR1389 (Card with a view), CR1410 (Tiny's Lighthouse), Creatables: LR0424 (Bear chair), Clear stamps TC0840 (Border-Dunes), Clear stamps: EC0163 (Eline's Words mindfulness), Distress ink: stormy sky, Decoupage

sheet Mattie's Mooiste: IT595 (Tiny's Background-Beach) Cut an 11.5 x 19.5 cm blue strip and score folds at 1 cm, 2.5 cm, 4 cm, 15.5 cm, 17 cm and 18.5 cm. Adhere the picture in the centre. Die-cut the window from an 11.5 x 11.5 cm blue card. Take 11.5 x 11.5 cm design paper and cut out the window. Adhere the layers together. Use a 6 x 15 cm blue strip and cut into a triangle, starting in the centre. Adhere to the card. Use a 6 x 15 cm white strip and do the same, but this time the sides are only 1 cm wide. Adhere, together with the fishing net, using 3D-glue/tape. Adhere the roof to the beach house. Stamp the dunes onto kraft, cut out and adhere. Die-cut/emboss the lighthouse from white and ink with stormy sky. Finish off the card with the lighthouse, bear chair, seagulls and a text.

sheet Mattie's Mooiste: IT595 (Tiny's Background-Beach)

By Anja Zom
anjazomkaartenblog.blogspot.nl

Materials used for both cards:

Creatables: LR0469 (Hedera), LR0470 (Anja's Frilly Square), LR0472 (Anja's Flower set), Die-cut and embossing machine, Design paper: PK9147 (Aquacolour), Papicolor card Original: pearly white (930), Vellum



Extra needed for this card:

Creatables: LR0324 (Fairy Magic), Decoupage sheet: VK9559 (Fairies 1), Papicolor card: purple (913), Kraft paper, Diamond gems: JU0932, Glitter glue: Stickles, Ribbon: JU0924 (tulle)

Die-cut the largest template of LR0470 from design paper and the swirls from pearly white card.

Place the white shape onto design paper, trace the inner edge and cut the centre out 3-4 mm smaller to create a narrow coloured border. Glue the picture behind.

Layer the design paper to a 14 x 14 cm white card and trim leaving a 3 mm wide border.

Then adhere to a 14.5 x 14.5 cm purple single-fold card.

Cut off this card at 3 mm from the edge as well, but cut out only a few small parts near the fold, to keep the two card halves together.

Die-cut the hedera, flowers and fairy and finish off with glitter glue and a diamond gem.



Extra needed for this card:

Creatables: LR0323 (Fairy Star), Decoupage sheet: VK9560 (Fairies 2), Enamel dots: PL4513 (baby blue), Inkpad: Versamark, Embossing powder: white, Heat tool, Jewellery cord: white, Feathers

Die-cut the largest template of LR0470 from design paper and the template with swirls from pearly white card.

Place the white shape onto design paper, trace the inner edge and cut out the centre 3-4 mm smaller to create a narrow coloured border. Glue the picture behind.

Layer the design paper to a white card and trim leaving a narrow border.

Then adhere to a 14.5 x 14.5 cm purple single-fold card.

Place the largest template onto a 14 x 14 cm white single-fold card, place the template slightly further than the fold, trace the outline and cut out.

Open out the card and fold one half of the front flap back to the centre to create an easel card.

Die-cut the largest template from design paper, stamp a text and adhere to the bottom half of the white card.

Die-cut flowers and hedera and adhere them to the design paper as a stopper for the folded card.

Adhere the other card to the folded card. The stopper makes it stand up.

Finish off the card with flowers, twigs and a fairy.

By Karin Joan
www.makerisme.nl/kjmd



By Neline Plaisier
neline-mycardcreations.blogspot.nl

General instructions:

Draw a border of clouds and cut out to use as a template. Dab distress ink tumbled glass onto the stamped images along the edge of the template. Keep replacing the template to create a blue cloudy sky.

Die-cut the lighthouse from pearly white and red card. Leave the lighthouse in the template and work with distress ink fired brick and black soot. Remove from template and work the light part with distress ink mustard seed.

Work the edges of the sand dunes and the seashells after die-cutting with distress ink vintage photo.

Materials used for both cards:

Craftables: CR1410 (Tiny's Lighthouse), CR1411 (Seashell XL), Die-cut and embossing machine, Clear stamps: HT1621 (Hetty's Playful seals), HT1622 (At the beach), HT1623 (Sailing the seas), Distress ink: black shoot, fired brick, mustard seed, vintage photo, antique linen, tumbled glass, Inkpads: Archival jet black, mediteranean blue, Perfect colouring paper (PCP), Design paper: PK9146 (Cote d'Azur), Enamel dots: PL4511 (cold as ice), Papicolor card: Original red (918), pearly white (930) and moss green (951), Recycled kraft grey (322), Metallic silver (334), Enamel dots: PL4511 (cold as ice), Text PL-NL: PL1514 (Zon, zee, strand), Scrapper's rope



Extra needed for this card:

Craftables: CR1278 (Sand castle), CR1390 (Basic stitched passe-partout-Rectangle), CR1402 (Bendy card)

For the Bendy card: cut a 15.5 x 17 cm pearly white rectangle.

Die-cut the strips from the same card colour and shape them a little. Adhere the curved strips to the sides of the card using double-sided tape. Cut 15 x 16.5 cm design paper.

Die-cut the backgrounds for the card and strips from design paper. Cut them a little smaller and adhere.

Then cut a vertical slit in the strips where needed.

Place one strip on top of the other and fix the ends into the slits. The base for the Bendy card is finished now.

Die-cut the big shell from design paper.

Cut 14.5 x 10.25 cm from design paper and die-cut into a passe-partout using CR1390. Cut 14.25 x 10 cm PCP, stamp the image using the masking technique* and colour in.

Stamp seals, shells, a crab and sea gulls onto PCP, colour in and cut out. Die-cut the lighthouse. Die-cut the sand dunes (CR1410) 5x from grey kraft and the grass from moss green. Die-cut the sand castle from recycled kraft, red and silver-coloured card. Work the castle with distress ink vintage photo and the bucket with fired brick. Stamp the texts and cut into banners. Punch a hole into one of them and tie a rope through. Finish the card off with enamel dots.

*For the masking technique see the download of The Collection #3.



Extra needed for this card:

Craftables: CR1359 (Basic stitched passe-partout-Square), Creatables: LR0473 (Sailing boat Valk)

Cut a 14.5 x 14.5 cm single-fold card. Cut 13 x 13 cm and 13.75 x 13.75 cm design paper, mat the largest square on recycled kraft. Cut the large seashell 2x from design paper. Cut 12 x 11.5 and 12 x 6 cm from PCP. Stamp the images using the masking technique* and colour in. Cut out the small images along the wavy line. Stamp a seal, seashells and a crab, colour in and cut out. Die-cut the lighthouse. Die-cut the sand dunes (CR1410) 2x from recycled grey kraft and the grass from moss green card. Die-cut the sailing boat from recycled kraft and 2x from pearly white card. Adhere the sails raised with 3D-glue. Work the boat with distress ink vintage photo, the sails with antique linen and the flags with red. Die-cut the label (PL1514) from design paper, stamp the text and punch a hole into it. Tie it to the square. Finish the card and the sailing boat off with enamel dots.