

The Collection #57



By Neline Plaisier

neline-mycardcreations.blogspot.com

General instructions:

Cut a rectangle or square from PCP, the correct size is mentioned in the card description. Stamp the images with Archival jet black ink using the masking technique. Set aside to dry, then colour in with Copic markers or other colouring materials. Work the sky with pan pastel. Stamp snowflakes with Versamark ink, sprinkle embossing powder on top and shake off excess powder. Heat the image with a heat tool at the back of the image. Stamp the texts and cut into labels. Cut labels of the same size from design paper. Punch a hole through them and tie together with rope.

Materials used for all cards:

Die-cut and embossing machine, Inkpad: Archival jet black, Copic markers, Papicolor card: Recycled kraft grey (322), Original pearly white (930), Perfect colouring paper (PCP), Masking tape, Hole punch or Crop-a-dile, Scrapper's floss



Extra needed for cover card:

Craftables: CR1359 (Basic shapes with stitches-Square), CR1391 (Basic shapes-Ticket), Design folder extra: DF3439 (Celestial Stars), Clear text stamps: CS0979 (Kerst-, winter- en nieuwjaarswensen), Clear stamps: HT1608 (Winter Mice), HT1609 (Happy Snowmen), HT1624 (Santa

Clauses), HT1625 (Border-Christmas Village), Inkpad: Archival vermillion, Design paper bloc: PK9150 (Winter dream), Pan Pastel: ultra marine blue shade

Cut 14.5 x 14.5 cm from kraft and 13.75 x 13.75 cm and 13 x 13 cm from design paper, mat the large one onto pearly white card.

Die-cut four tickets from design paper.

Cut 12.5 x 12,5 cm PCP and die-cut a square from the centre to create an aperture.

Stamp the image as shown in the step-by-step photos and colour in. Stamp the two trees, Santa Claus and snowman, colour in and cut out.

Stamp a text in red onto pearly white card.



Extra needed for this card:

Craftables: CR1352 (Basic shapes-Label), CR1391 (Basic shapes-Ticket), Design folder extra: DF3440 (Snow and ice crystals), Clear text stamps: CS0979 (Kerst-, winter- en

nieuwjaarswensen), Clear stamps: HT1608 (Winter Mice), HT1609 (Happy Snowmen), HT1610 (Wintertrees), HT1611 (Border-Snow), HT1624 (Santa Clauses), HT1625 (Border-Christmas Village), Inkpad: Archival vermillion, Design paper bloc: PK9150 (Winter dream), Pan Pastel: ultra marine blue shade

Cut a 18 x 12 cm single-fold card from kraft. Cut 17.25 x 11.25 cm design paper and mat on pearly white. Emboss a 10.75 x 11 cm pearly white card.

Die-cut a pearly white ticket and emboss snow and ice crystal onto it.

Die-cut a label and ticket from design paper.

Cut 16.75 x 10 cm from PCP, stamp the image and colour in.

Stamp snowflakes. Stamp a text with red ink onto a pearly white scrap.

Complete the card with die-cut snow and ice crystals.





Extra needed for this card:
 Craftables: CR1391 (Basic shapes-Ticket), Design folder extra: DF3439 (Celestial Stars), Clear text stamps: CS0979 (Kerst-, winter- en nieuwjaarswensen), Clear stamps: HT1608 (Winter Mice), HT1609 (Happy Snowmen), HT1610 (Wintertrees),

HT1624 (Santa Clausen), HT1625 (Border-Christmas Village), Inkpad: Archival olive, Design paper bloc: PB7053 (Eline's Berry Christmas), Decoration paper: CA3126 (gold), Pan Pastel: ultra blue extra dark

Cut 26.5 x 15.25 cm strip from kraft and score folds at 15.5 cm (valley fold), 17 cm (mountain fold) and 18.5 cm (valley fold). Fold the card and adhere with a piece of tape.
 Cut 14.5 x 14.75 cm design paper and mat on pearly white. Emboss a 13 x 14 cm pearly white rectangle.
 Die-cut two tickets from design paper and the celestial stars from gold card.
 Cut 12 x 14 cm PCP. Stamp the image and colour in. Stamp presents, colour in and cut out.
 Stamp the text with olive green ink onto a pearl white scrap. Complete the banners with two pieces of celestial stars.



Extra needed for this card:
 Craftables: CR1352 (Basic shapes-Label), CR1390 (Basic shapes with stitches-Rectangle), Design folder extra: DF3440 (Snow and ice crystals), Clear text stamps Project NL: PL1517 (Winter), Clear stamps: HT1608 (Winter Mice), HT1609 (Happy

Snowmen), HT1610 (Wintertrees), HT1611 (Border-Snow), HT1624 (Santa Clausen), HT1625 (Border-Christmas Village), Inkpads: Archival cobalt, Versamark, Embossingpowder: seafoam white, Design paper bloc: PK9150 (Winter dream), Fine sandpaper, Heattool, Pan Pastel: ultra blue extra dark

Cut a 14.5 x 14.5 cm top-fold card from kraft.
 Cut 13.75 x 13.75 cm design paper and 12.5 x 12.5 cm pearly white card. Emboss both squares, sand down the large one with fine sand paper and then adhere.
 Die-cut two labels and a rectangle from design paper.
 Cut 14 x 11.5 cm from PCP, stamp the image and colour in. Stamp snowflakes. Stamp the text with dark blue ink onto pearly white card.
 Complete the card with die-cut snow and ice crystals.

By Petra van Dam
hobbykaartenpetra.nl

General instructions:

Read the measurements as follows: The sizes in cm are indicated as: you first see the height and then the width. So 10 x 5 cm means 10 cm high and 5 cm wide. Adhere ribbon with double-sided tape.

Materials used for both cards:

Creatables: LR0435 (Petra's Poinsettia), LR0436 (Petra's Flower bowl), LR0437 (Petra's Twigs set), LR0485 (Petra's Oval and Corners), Die-cut and embossing machine, Distress ink: frayed burlap, weathered wood, Decoupage sheet: VK9562 (Forest Animals), Design paper: PK9142 (Après Ski), Papicolor card: Original silver grey (902), cloud grey (929) and light grey (957), Metallic pearlwhite (330) and ivory (331), Snow paper: CA3104, Silver paper: CA3127, Vellum

Extra needed for this card:
 Creatables: LR0438 (Petra's Larch), Papicolor card: Original dark brown (938), night blue (941), olive green (945), Enamel dots: PL4510 (gold and silver), PL4511 (cold as ice), Ribbon: VV1002 (glossy, silver 1 mm), VV1007 (organza with star/snow glitter, anthracite 25 mm), VV1015 (Christmas ribbon with V-pattern, black-silver 3 mm)

Take a cloud grey A4 sheet. Fold in half and open again. Score (whole width) at 4 cm up from bottom. Make an incision of 4 cm in the fold at the bottom. Fold both flaps inside. Don't adhere yet. Turn the card, fold is at the top now.



1. Cut from: tree design 13.3 x 13.2 cm, night blue 13.7 x 13.6 cm, striped design 13.7 x 15.1 cm. Adhere tree design in the centre onto night blue. Adhere organza ribbon (VV1007) along the bottom behind the night blue as shown. Glue the striped design behind the night blue.



2. Cut 14.6 x 16.5 cm blue design paper and adhere on the front to cloud grey (aligned with the bottom). Take a long piece of organza ribbon (VV1007) and adhere in the centre onto the blue design paper.



Card inside

3. Cut twice 14.3 x 14 cm blue design paper. Adhere to the inside as shown. Cut a 2.6 x 14 cm night blue strip. Adhere along the top. Fold the ribbon (right-hand side) over the night blue and adhere to cloud grey. Left-hand side: fold ribbon around the flap and adhere to the back of cloud grey. Finish off the top of both flaps neatly with Christmas ribbon (VV1015). Now adhere both sides of the flaps, leave centre open.



4. Die-cut/emboss the oval, 1x from pearl white and 1x with two dies at the same time (outer edge and ring) from silver paper. The centre is now open. Adhere the picture in the centre behind silver. Adhere the pearlwhite oval at the bottom behind the silver. *(Tip: Make a hanger. Die-cut/emboss the oval 2x from pearl white and finish off the back neatly.*



Die-cut/emboss the large flower 1x from pearl white and 1x from vellum. Adhere vellum overlapping in the centre of pearl white. Die-cut/emboss the small flower from ivory and vellum, the heart from snow paper. Assemble the flower and set aside to dry. Die-cut/emboss four leaves from silver grey (work with frayed burlap) and the pine set from olive green and dark brown. Fold Christmas ribbon (VV1015) in half and thread through the top of the oval. Make two loops of glossy thread and adhere with 3D-glue. Adhere the pine set and the flower.



Extra needed for this card:

Creatables: LR0436 (Petra's Flower bowl), LR0437 (Petra's Twigs set), Papicolor card
Original: light grey (957),
Diamond gems: JU0932,
Lace: CG1001(ivory 10 mm),
Ribbon: VV1006 (cream organza, pine twig with glitter, 25 mm), VV1012 (satin white, narrow, stars 6 mm)



Folding the card

Cut 19.5 x 28 cm light grey. Fold and unfold again. Score (whole width) at 5 cm up from the bottom. Make an incision of 5 cm in the fold at the bottom. Fold both flaps inside. Cut twice 10.5 x 13.5 cm cloud grey and twice 10 x 13 cm design paper (star). Adhere inside as per example. Add the lace to the panels.

Secure the flaps on both sides (leave centre open). Turn the card as per example, the fold is at the top now.



Card front

Cut 13.3 x 14.1 cm cloud grey card and 12.9 x 13.8 cm design paper (star). Adhere to card front as shown.

Cut a 13.9 x 5.3 cm strip from design paper with wood design and 13.9 x 2.5 cm light grey. Adhere ribbon (VV1006) to light grey at top and bottom at the back.

Adhere the light grey strip and the ribbon at 1.9 cm from the right-hand side onto the wood design.

Adhere the lace (CG1001) at the left-hand side behind the wood design.

Then adhere the whole set at the left-hand side of the card front.

By Tineke van der Linden

tinekeskaartenhoekje.blogspot.nl

General instructions:

Ink the edges of the design paper and images with distress ink pumice stone.

Materials used for both cards:

Craftables: CR1421 (Nest dies-Star), Creatables: LR0486 (Bended border with ice crystals), Distress ink: pumice stone, Inkpad: Memento gray flannel, Design paper: PK9150 (Winter Dream), Papicolor card Original: pearly white (930), dark brown (938), Snow paper: CA3104, Snowtex



Extra needed for this card:

Craftables: CR1289 (Tiny's Deer), CR1333 (Basic shapes-Oval), Creatables: LR0378 (Fir), LR0442 (Tiny's Reindeer), LR0444 (Horizon-Forest), Design folder Extra: DF3440 (Snow and ice crystals), Distress ink: vintage photo, Stamps: PL1517 (Project NL-

Winter), Papicolor card: Original olive green (945), Recycled kraft grey (322) and brown (323), Metallic baby blue (366), Decoupage sheet: VK9563 (Forest Animals-Fox), Foam ball clay: white glitter, Sharpie-pen: white



Die-cut/emboss the oval using two dies at the same time (outer edge and ring) from pearl white. The centre is open. Lay the die (LR0485) at the back of the light grey card. Trace the outline in pencil and cut out. Adhere the picture to the centre of light grey. Use 3D-kit to adhere light grey behind pearl white. Set aside to dry. Die-cut/emboss the flower bowl from silver-coloured card (CA3127). Slide the oval onto the flower bowl as shown and adhere at the back (measure it well). Then adhere to the card front.

Die-cut/emboss the large flower 1x from ivory and 1x from vellum. Adhere the vellum overlapping onto the centre of the ivory card. Die-cut/emboss the small flower from light grey and vellum and the heart from vellum. Assemble the flower and set aside to dry. Die-cut/emboss three leaves from silver grey, the twigs set from snow paper and silver card. Die-cut/emboss the small corners from pearl white and layer the snow paper behind. Make a pretty collage and glue in position.

Cut a 20 x 15 cm baby blue strip and score folds at 2.5 cm and 5 cm. Cut 14.4 x 14.4 cm pearly white card and layer 10.5 x 14.1 cm design paper on the top half. Die-cut the star with two stencils at the same time from dark brown card. Emboss stars onto white card and layer behind the open star. Die-cut the border with trees from olive green and apply snowtex. Die-cut 4.5 x 14.1 cm design paper, copy the wavy border and cut off. Die-cut the image with the solid stencil, mat on olive green and adhere together with the decorative white frame. Die-cut the deer from brown kraft and, after embossing, work with distress ink vintage photo and the sharpie-pen. Adhere 6.5 x 15 cm design paper to the folded strip. Cut 6.5 x 14.4 cm pearly white and die-cut the border with stars. Cut 4.5 x 14.1 cm design paper, trace the border along the side and cut off. Die-cut the fir from olive green and the trunk from grey kraft and apply snowtex. Die-cut the reindeer from brown kraft and, after embossing, work with distress ink vintage photo. Adhere all parts to the card and finish off the border with foam ball clay. Complete the card with ice crystals, cut from snow paper and stamp a text onto a banner.



Extra needed for this card:
Creatables: LR0435 (Petra's Poinsettia), LR0437 (Petra's Twigs set), LR0487 (Lots of stars), Design folder extra: DF3439 (Celestial stars), Inkpap: CS0979 (Kerst-, winter- en nieuwjaarswensen), Papicolor card: silver grey

(902), mouse grey (944), light pink (923), heather (922), cloud grey (929), Decoupage sheet: VK9562 (Forest Animals-Squirrel), Adhesive pearls: JU0953 (light and dark silver)

Cut a 15 x 15 cm mouse grey top-fold card. Cut a 14.4 x 14.4 cm pearly white card and layer 8.5 x 14.1 cm design paper along the bottom. Die-cut the border with stars from white card. Cut 8 x 14.1 cm design paper for the top half of the card, trace the edge of the die-cut border onto the bottom and cut off. Die-cut the star with two stencils at the same time from cloud grey card. Emboss stars onto white card and die-cut the coordinating cutting die from heather coloured card. Layer together behind the open star.

Cut out the image and adhere with 3D-glue/tape.

Die-cut/emboss the poinsettia, leaves and twigs from the colours shown in the photo. Die-cut the star from snow paper as well. Assemble the flower, glue in position and finish off with an adhesive pearl. Apply snowtex to the twigs.

Finish off the card with a stamped text.

By Marleen van der Most
handmadebymarleen.blogspot.com

Materials used for all cards:

Collectables: COL1437 (Eline's Mice Family), COL1438 (Eline's Outfits), COL1439 (Eline's Christmas decorations), Die-cut and embossing machine, Inkpap: Memento tuxedo black, Design paper bloc: PB7053 (Berry Christmas), Papicolor card: raven black (901), grass green (907), pearly white (930), cerise (933), blossom (934), Christmas red (943), pine green (950), spring green (952), Gel pen: white, Wax cord



Extra needed for this card:
Design folder Extra: DF3439 (Celestial stars), Clear stamps: CS0979 (Kerst-, winter- en nieuwjaarswensen), Decoupage sheet: AK0068 (Eline's Christmas backgrounds), Papicolor card: Recycled kraft brown (323), carnation white (903), mocha (953), dark

brown (938), nut brown (939), Decoration paper: CA3126 (gold)

Cut a 13.5 x 13.5 cm pearly white top-fold card and layer 13 x 13 cm recycled brown kraft on top.

Cut 12.5 x 12.5 cm silver grey card, emboss the stars into it with the design folder and adhere.

Cut 9.7 x 9.7 cm pearly white and adhere.

Cut the image smaller (9.3 x 9.3 cm) and adhere.

Die-cut the Christmas tree, mice, presents and Christmas twigs and adhere.

Finish off the card with a bow and a text.



Extra needed for this card:
Collectables: COL1355 (Fox), COL1368 (Hedgehog), Craftables: CR1352 (Basic shapes-Label), Design folder Extra: DF3440 (Snow and

Ice Crystals), Clear stamps: CS0980 (Christmas Sentiments), Decoupage sheet: AK0068 (Eline's Christmas backgrounds), Papicolor card: Recycled kraft brown (323), Original carnation white (903), mocha (953), dark brown (938), nut brown (939), Decoration paper: CA3126 (gold), Snow paper: CA3104

Cut a 21 x 10.5 cm pearly white single-fold card and layer 20.5 x 10 cm recycled brown kraft on top.

Cut out the image of the background and adhere.

Die-cut the label from pearly white, stamp a text, emboss with the design folder and adhere.

Die-cut the fox, hedgehog, mouse, lantern and Christmas twigs and adhere.

Finish off the card with the rest of the text and snowflakes.



Extra needed for this card:
Design folder Extra: DF3440 (Snow and Ice Crystals), Clear stamps: CS0979 (Christmas, Winter and New Year's wishes), Decoupage sheet: AK0069 (Eline's Snowy backgrounds), Papicolor card: Recycled

kraft white (321), Original: mouse grey (944), light grey (957) and taupe (961), Decoration paper: CA3127 (silver), CA3120 (bronze), Snow paper: CA3104

Cut a 15 x 10.5 cm white single-fold card.

Cut 14.5 x 10 cm mouse grey, emboss with the design folder and adhere.

Cut the image smaller (12.5 x 9.3 cm) and adhere slantwise.

Die-cut the mouse and Christmas twigs and adhere.

Finish the card off with a bow, text and snowflakes.



Extra needed for this card:
 Collectables: COL1416 (Eline's Pinguin), Craftables: CR1352 (Basic shapes-Label), CR1353 (Label XL & Labels XS), CR1408 (Card stand), Design folder
 Extra: DF3439 (Celestial stars), Clear stamps: CS0980 (Christmas sentiments),

Die-cut the largest label from recycled white kraft and emboss with the design folder. Die-cut a smaller label from pearly white. Die-cut the background with the same stencil and adhere. Tie the labels together with wax cord.
 Die-cut the mouse, penguin and Christmas twigs and adhere.
 Die-cut the card stand from chipboard. Trace the inside of the stand onto the back of design paper, cut out and adhere.
 Add a text to complete the card.

Decoupage sheet: AK0069 (Eline's Snowy backgrounds),
 Papicolor card: Recycled kraft white (321), Original: mouse grey (944), light grey (957) and taupe (961), Chipboard: CB5501,
 Decoration paper: CA3127 (silver)

By Sigrid Klingenberg
sigridklingenberg.blogspot.nl

Materials used for all cards:

Craftables: CR1419 (Wreath), Die-cut and embossing machine, Clear stamps: CS0996 (Birthday wishes), TC0857 (Tiny's layered stamps-Leaves), Stamp master: LR0009, Inkpad: black, Distress ink: vintage photo, Memento ink: bamboo leaves, cantaloupe, dandelion, espresso truffle, ladybug, love letter, morocco, new sprout, northern pine, peanut brittle, potter's clay, rhubarb stark, rich cocoa, tangelo, toffee crunch, Stamping paper: white, Papicolor card: carnation white (903), dark brown (938)

General instructions:

Ink the edges of the paper with distress ink vintage photo.



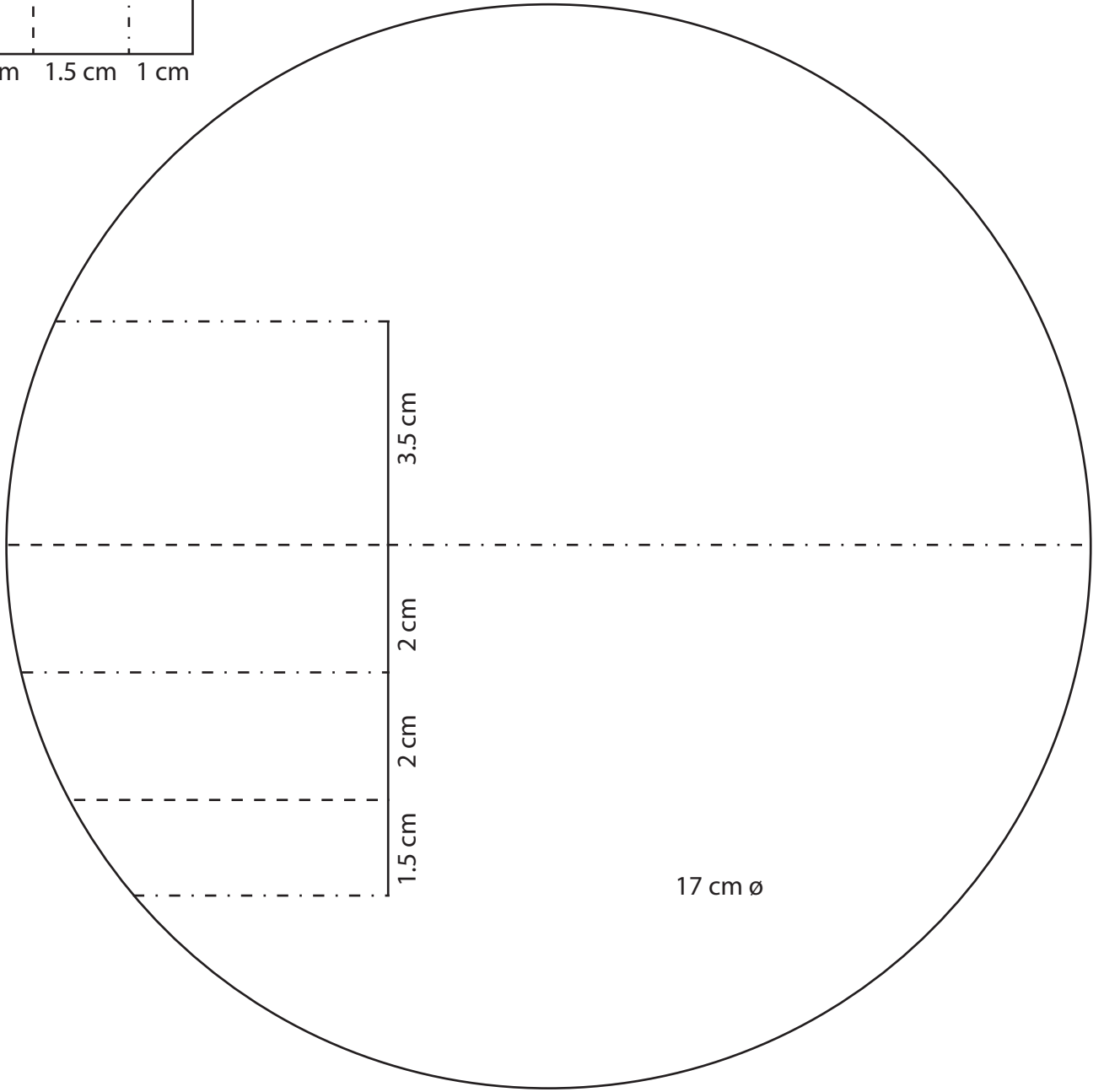
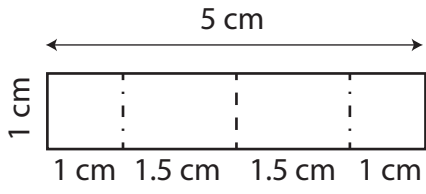
Extra needed for this card:
 Design paper bloc: PK9138 (Canadian fall), Papicolor card: orange (911), Adhesive pearls: brown, Ribbons: JU0951 (Victorian)

Cut 13 x 13 cm design paper, adhere to 13.5 x 13.5 cm orange and then to a 15 x 15 cm carnation white single-fold card.
 Cut design paper into strips: 13 x 3.5 cm, 13 x 1.5 cm and 4 x 13 cm and a 8 x 8 cm square.
 Adhere the layers to the card and finish off as shown.



Extra needed for this card:
 Craftables: CR1420 (Punch die-Autumn), Tiny's layered clear stamps: TC0856 (Squirrel), Design paper bloc: PK9138 (Canadian fall), Distress ink: carved pumpkin, festive berries, forest moss, fossilized amber, pine needles, Gel pens: red and white, Adhesive pearls: brown, Rope

Cut a 8.5 cm Ø carnation white circle. Fold the circle in half and open again. Trace pattern B, cut and score. Fold the card again and round off the 'step'.
 Cut all visible parts of the pattern from design paper and cut them 0.5 cm smaller all around. Cut a 5 x 1 cm carnation white strip and score folds at 1 cm, 2.5 cm, 4 cm and 5 cm. Fold them as mountain, valley and mountain folds. Adhere centrally inside the card to keep the front and back flaps together when standing.
 Die-cut the pumpkins, toad stools etc. from stamping paper and colour in with distress ink.
 Finish off the card as shown.





Extra needed for this card:
 Tiny's layered clear stamps:
 TC0856 (Squirrel), TC0858
 (Chrysantenum), Distress ink:
 brown: gathered twigs, green:
 peeled paint, shabby shutters,
 twisted citron, Rope

Cut a 27.5 x 13.5 cm carnation white strip and score folds at 13.5 cm and 14 cm. Trace pattern B onto the card front and cut/fold the card.

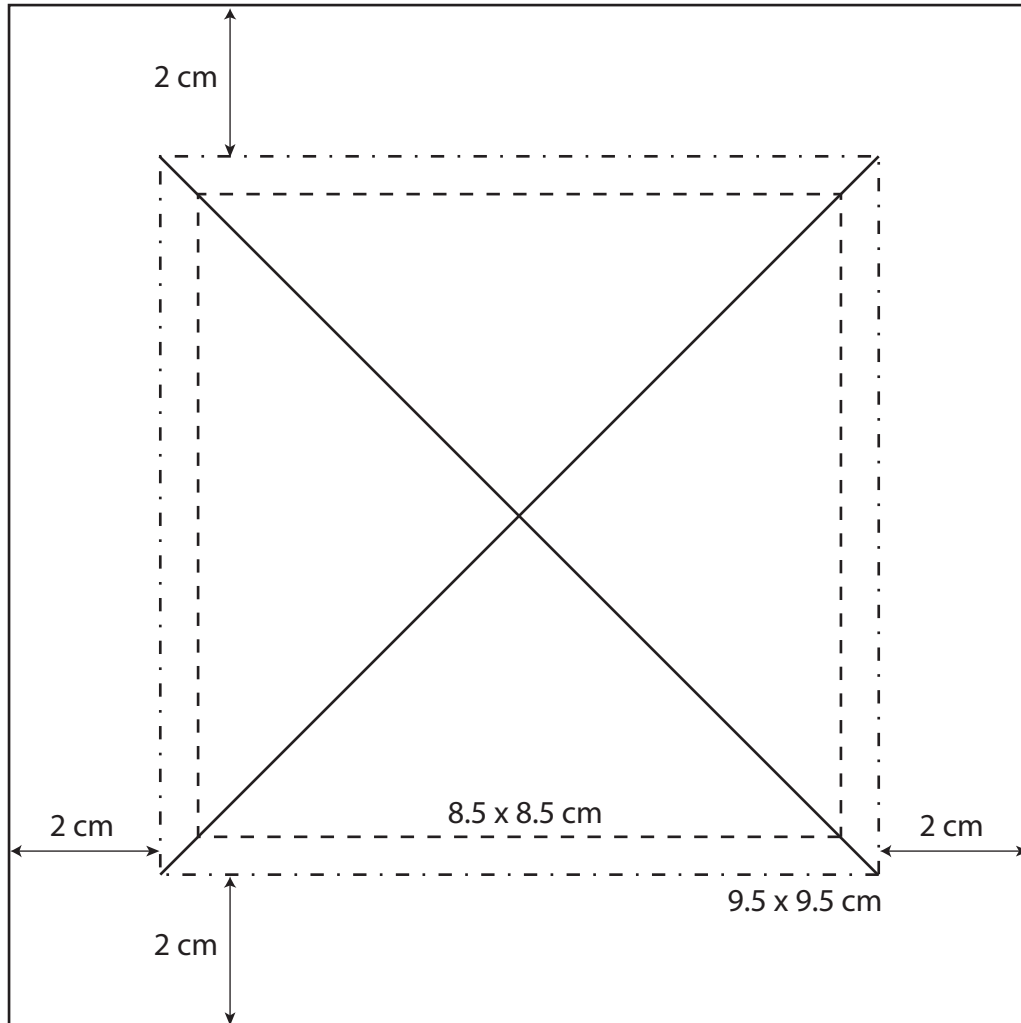
Cut 9.4 x 9.4 cm stamping paper and work with three green colours of distress ink.

Cut 13 x 13 cm stamping paper and cut a 10 x 10 cm aperture from the centre. Use Memento ink to stamp leaves. Work the paper with distress ink gathered twigs and vintage photo. Adhere the frame around the aperture.

Cut 9.5 x 9.5 cm carnation white and adhere to the inside of the card.

Finish off as shown.

Pattern B



13.5 x 13.5 cm



Extra needed for this card:
 Tiny's layered clear stamps:
 TC0858 (Chrysantenum),
 Distress ink: brown: gathered
 twigs, green: peeled paint,
 shabby shutters, twisted
 citron, Watermark ink,
 Embossing powder: clear, Heat
 tool, Papicolor card: cerise
 (933), Adhesive pearls: brown

Cut 13 x 13 cm stamping paper, use Memento ink and stamp several acorns. Work the paper with distress ink gathered twigs and vintage photo and then adhere to a 13.5 x 13.5 cm cerise card.

Cut 8 x 8 cm stamping paper. Use watermark ink and stamp leaves with the step-4 stamp. Sprinkle embossing powder on top and heat with a heat tool. Work the paper with three green colours of distress ink and then adhere to a 8.5 x 8.5 cm dark brown card.

Layer all parts to a 15 x 15 cm carnation white single-fold card. Finish off as shown.

Materials used for all cards:

Collectables: COL1440 (Village decoration set 5-Christmas market), Craftables: CR1394 (Punch die-Flower garden), Die-cut and embossing machine, Design paper bloc: PB7053 (Berry Christmas), Papicolor card Original: raven black (901), red (918), pearly white (930), olive green (945), Gel pens



Extra needed for this card:

Collectables: COL1436 (Village decoration set 4-Bicycle, etc.), Craftables: CR1374 (Box card), CR1393 (Vegetable garden), CR1398 (Punch die-Birds), CR1418 (Punch die-Cars), Creatables: LR0392 (Snowy Icicles), LR0443 (Tiny's

Austrian village), LR0444 (Horizon-Forest), LR0487 (Lots of stars), Design folder extra: DF3439 (Celestial Stars), Stamps: CS0979 (Kerst-, winter- en nieuwjaarswensen), Inkpad: white pigment, Archival jet black, Papicolor card Original: dark brown (938), night blue (941), mouse grey (944), Kraft, Glitter glue: stardust (Stickles), Decoration paper: CA3127 (silver), Tulle, Wax cord 0,5 mm: white

Die-cut the box card with three support strips from white card. Cut a 14 x 14 cm night blue card, emboss the starry sky and work with white ink. Cut the top in the shape of the box card and adhere at the back.

Use the cutting die to make stars from silver-coloured decoration paper and adhere along the top of the night blue card.

Die-cut the horizon with forest 3x from olive green and work with white ink.

Tear strips of white card and adhere to the support strips, work the edges with glitter glue.

Die-cut/emboss the motifs needed. Work the Christmas stalls and trees with a gel pen.

Arrange all parts on the back flap and support strips and adhere. Then assemble the box card.

Die-cut/emboss the icicles and adhere along the inside of the top of the front flap.

Finish off the front as shown.



Extra needed for this card:

Craftables: CR1398 (Punch die-Birds), CR1431 (Nest dies-Stars), Creatables: LR0444 (Horizon-Forest), Design folder extra: DF3440 (Snow and ice crystals), Inkpad: white pigment, Papicolor card Original: night blue (941), moss green (951), Snow paper:

CA3104, Decoration paper: CA3127 (silver), Ribbon: red satin

Cut a 14.5 x 14.5 cm red single-fold card.

Cut 14 x 14 cm design paper and layer red ribbon across, fixing the ends at the back and then adhere to the card.

Emboss snow and ice crystals onto a 12.5 x 12.5 cm white card and mat on red.

Adhere 5.5 x 14.5 cm design paper to a 6 x 14.5 cm red strip, adhere as shown.

Die-cut the largest star from red, the decorated one from white and the smaller one from white and blue card. Tear the small white one in half and layer on the blue one.

Die-cut/emboss the motifs. Work the trees and night blue sky with a gel pen and adhere as shown.

Use the cutting die make ice crystals from snow paper.

Complete the card with a red satin ribbon.



Extra needed for this card:

Craftables: CR1398 (Punch die-Birds), Creatables: LR0486 (Bended border with ice crystals), Design folder extra: DF3440 (Snow and ice crystals), Clear stamps: CS0980 (Christmas sentiments), Inkpad: Archival jet black, Ribbon: red satin

Cut a 14.5 x 14.5 cm red single-fold card and 14 x 14 cm design paper.

Cut a 13.5 x 13.5 cm white card, die-cut a bended border with ice crystals along the bottom and mat on design paper.

Layer red ribbon across the white card with design paper and adhere to the red card.

Die-cut the motifs and work the trees and Christmas stalls with a gel pen.

Finish off with a red satin ribbon and text banners.



Extra needed for this card:
 Collectables: COL143 Village decoration set 4-Bicycle, etc.), Craftables: CR1418 (Punch die-Cars), Creatables: LR0443 (Tiny's Austrian village), LR0444 (Horizon-Forest), Inkpad: white pigment, Decoration paper: CA3127 (silver), Papicolor card

Original: dark brown (938), night blue (941), mouse grey (944), Kraft, Glitter glue: stardust (Stickles)

Cut a 15 x 15 cm white single-fold card and layer 14.5 x 14.5 cm design paper and 13.5 x 13.5 cm night blue card on top. Cut four 13.5 x 7 cm white strips and tear off along the long side. Die-cut the horizon with forest 3x from olive green and work the edges with white ink. Die-cut the motifs from different card colours and design paper. First lay the white torn strips on the card, place the die-cut motifs on and between them and glue everything in position if you like the lay-out. Work the Christmas tree and night sky with gel pens and the torn edges with glitter glue.

By Irma de Vries
irma-scrapkaarten.blogspot.com

Materials used for all cards:

Die-cut and embossing machine, Design paper: PK9150 (Winter Dream), Papicolor card: Original mouse grey (944), Snow paper: CA3104, Glitter glue: crystal (Stickles)



Extra needed for this card:
 Craftables: CR1412 (Feathers), Creatables: LR0286 (Pine cones), LR0438 (Petra's Larch), LR0485 (Petra's Oval and Corners), LR0486 (Bended corner with ice crystals), Decoupage sheets: EWK1253 (Winter Dream-blue), Papicolor card: Original baby blue, Metallic pearl white (330), Vellum: light blue, Dutch Doobadoo template: 470.713.107, Adhesive stones:

light blue, Buttons, Small punch: star, scrap of bronze-coloured paper

Trace the Dutch Doobadoo-template onto mouse grey card and a smaller size onto baby blue. Assemble. Die-cut the bended border 2x. Die-cut 7 x 13 cm design paper. Adhere one border under the design paper and the other one on top of it. Cut the picture from the decoupage sheet and slide under the border partially. Die-cut a star and slide under the picture partially. Finish off the edge with a strip of light blue adhesive glitters. Die-cut feathers and poinsettias and make a tuft. Cut feathers and the bird from the decoupage sheet and add to the tuft. Cut out another picture, cut into pieces and adhere randomly. Finish off with a die-cut corner.



Extra needed for this card:
 Craftables: CR1373 (Dreamcatcher-feathers used), Creatables: LR0486 (Bended border with ice crystals), LR0487 (Lots of stars), Clear stamps: CS0975 (Dreams),

Inkpad: Stazon stone grey, Decoupage sheet: EWK1252 (Winter Dream-pink), Papicolor card: Original light pink (923), cerise (933), Vellum, Adhesive stones

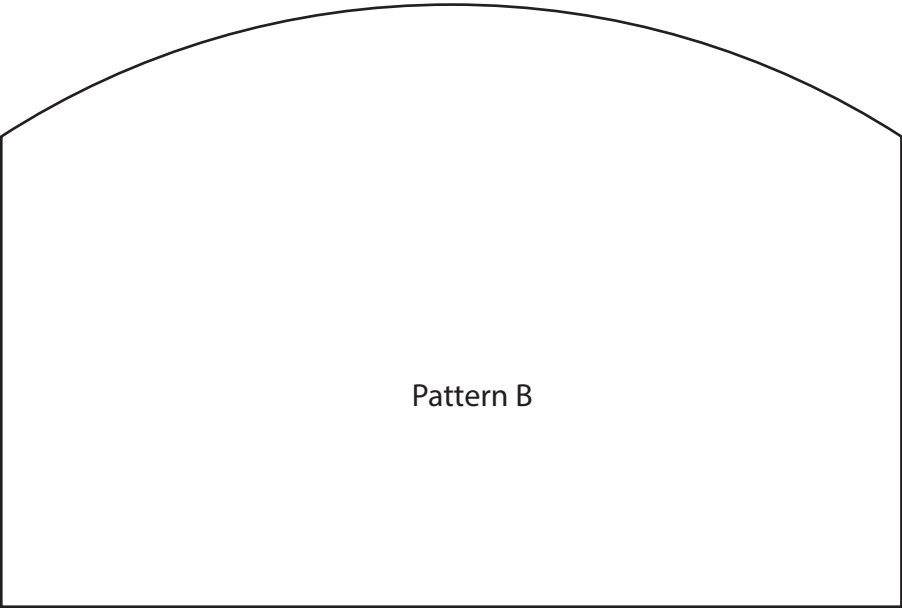
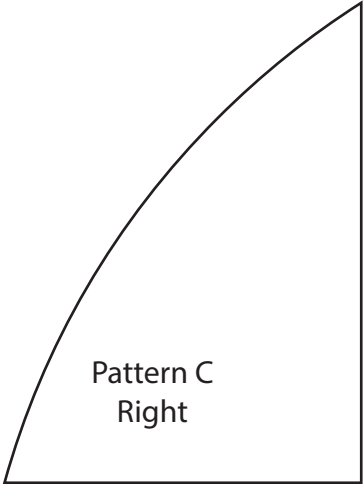
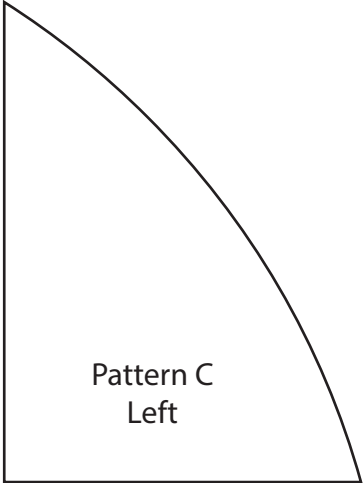
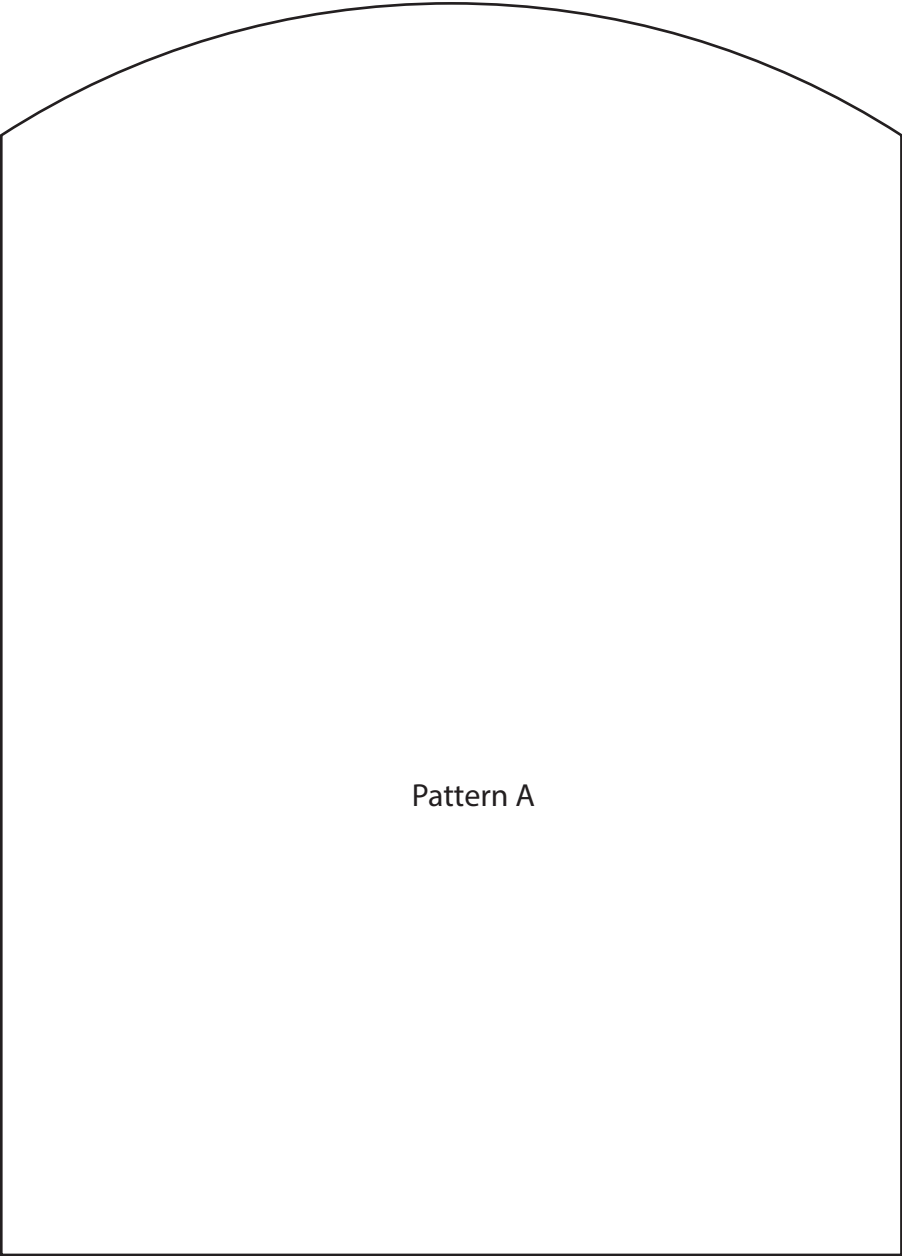
Cut a 15 x 15 cm single-fold card and 13.5 x 13.5 cm design paper. Die-cut the bended border with ice crystals from design paper. To create the double border: first die-cut it 1x, remove the stencil from the paper, turn the stencil and replace it 2 cm further on the paper and die-cut again. Stamp a text onto vellum and set aside to dry. Cut a slightly bended strip of 1 cm high from cerise card. Die-cut a star from vellum and cut in half, place the two halves under the cerise strip. Cut feathers from the design paper and place under the strip on the other side. Cut two more small stars from snow paper and vellum and adhere on top. Die-cut a picture from the decoupage sheet and adhere. Die-cut lots of stars (LR0487) from cerise card, cut in half and add to the tufts at the bottom of the card front. Cut the vellum text into a banner and adhere too. Finish off the card with feathers of snow paper and vellum and die-cut stars.



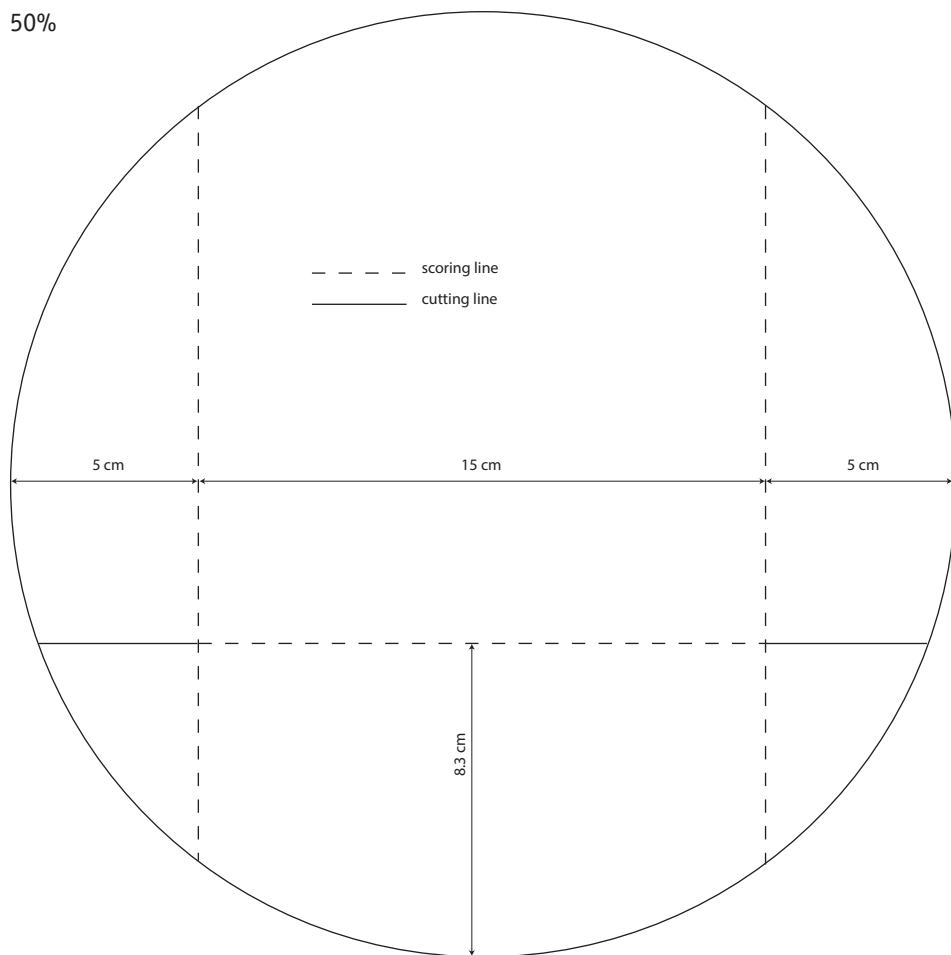
Extra needed for this card:
Craftables: CR1412 (Feathers),
Creatables: LR0485 (Petra's
Oval and Corners), Inypad:
CS0975 (Dreams), Inypad:
Stazon stone grey, Decoupage
sheet: EWK1253 (Winter
Dream-blue), Papicolor card:
Original baby blue (956),
Vellum, Yarn and pompom
ribbon

Draw a 25 cm Ø circle onto baby blue card.
Draw a line (see drawing) at 8.3 cm up from the bottom and at
5.5 cm in from the left and right-hand side.
Cut out the circle and score/cut the lines.
First fold the 5 cm flaps inside, then the 8.3 cm flap (the bottom
one) up and finally fold the two small flaps inside.
Trace pattern A onto design paper, adhere stars and a text.
Adhere a die-cut star to the top of the label. Tie yarn into a bow
and add to the star.
Trace pattern B onto design paper and adhere to the card.
Die-cut the oval from mouse grey card and place a picture inside.
Decorate the top with feathers.
Trace pattern C onto design paper, adhere and layer pompom
ribbon across.
Make a tuft with feathers and poinsettias.
Finish off with stamped feathers.

100%



50%



Extra needed for this card:

Craftables: CR1387 (Wreath),
CR1412 (Feathers), Creatables:
LR0438 (Petra's Larch), LR0487
(Lots of stars), Decoupage
sheet: EWK1252 (Winter
Dream-pink), Papicolor card:
Original grass green (907),
Metallic pearl white (330)

Use 27 cm long mouse grey card.

Cut into two slanting pieces (see drawing): one piece 17 cm height on the left-hand side and 8 cm high on the right-hand side.

The other piece 8 cm high on the left-hand side and 17 cm high on the right-hand side.

Draw in pencil on both strips a horizontal temporary line down the centre and vertical lines each 4.5 cm.

The bold lines are cutting lines and striped lines are scoring lines.

Cut and score both strips and slide/glue together.

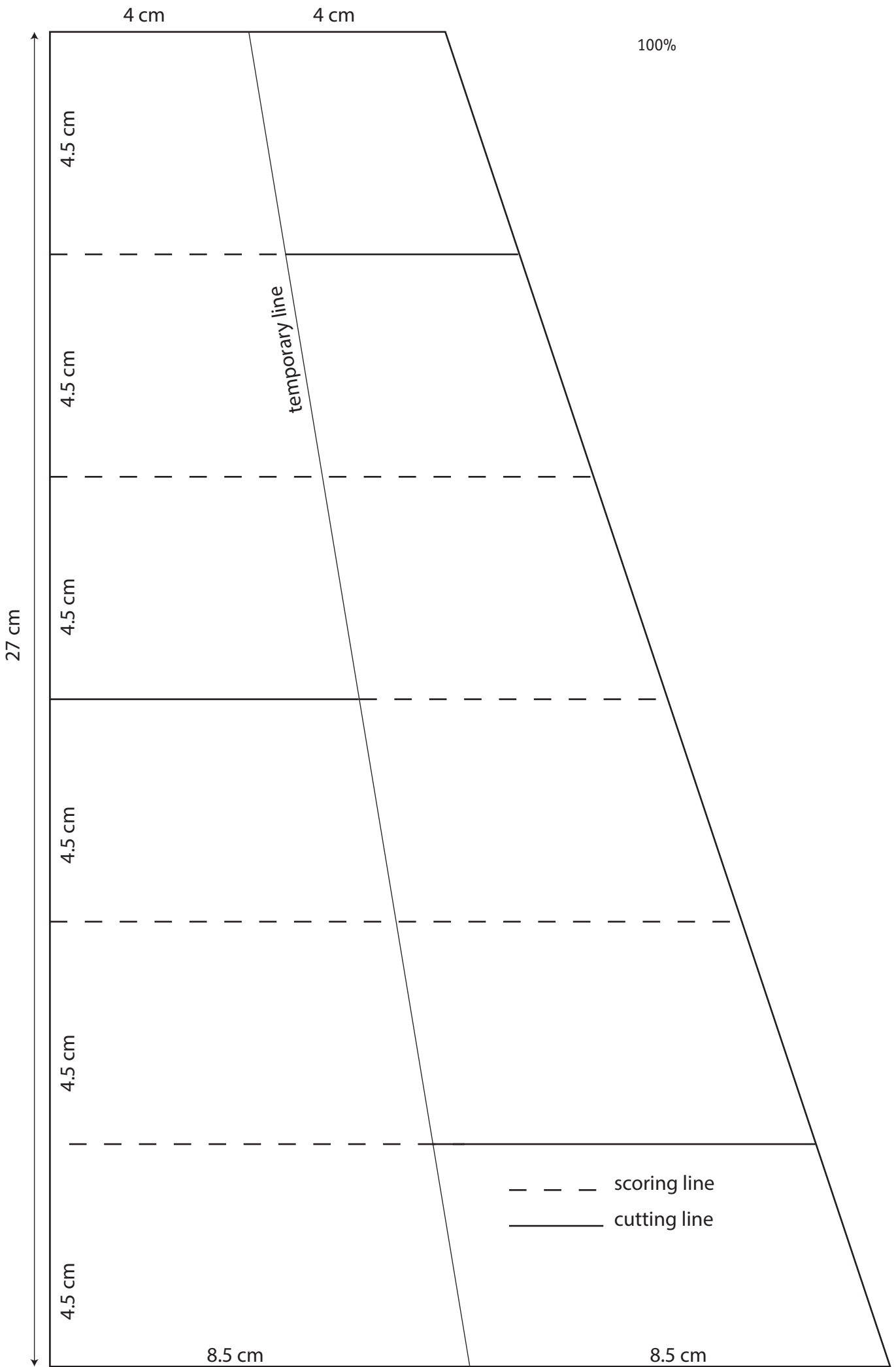
Die-cut the stars 5x from mouse grey card and 5x from design paper. Adhere three cards on the top parts of the card.

Cut off one point of two stars and adhere to the card front.

Die-cut feathers, a poinsettia, lots of stars and twigs, make tufts and decorate each star.

Cut out a picture from the decoupage sheet and adhere to the card front.

Finish off with die-cut stars.



By Sabine Sprenkeler
sabscreas1987.blogspot.nl

Materials used for both cards:

Craftables: CR1419 (Wreath), CR1420 (Punch die-Autumn), Creatables: LR0448 (Bows), Die-cut and embossing machine, Distress ink: fossilized amber, mustard seed, shabby shutters, crushed olive, peeled paint, Design paper blocs: PK9109 (Kraft), PK9138 (Canadian Fall), Papicolor card Original: dark brown (938), nut brown (939), cream (927), mocha (953), moss green (951), pearly white (930), Enamel dots: PL4502 (green and orange)



Extra needed for this card:

Creatables: LR0431 (Pumpkins), Papicolor card Original: orange (911), Distress ink: seedless preserves, candied apple, carved pumpkin, wild honey, vintage photo

Fold a kraft card (13.5 x 27 cm) in half and adhere 13 x 13 cm dark brown and 12.5 x 12.5 cm design paper. Die-cut the wreath from three shades of brown and cream-coloured card. Adhere together onto the design paper and pull up parts of the darkest wreath. Die-cut the bow and pumpkins from orange. Die-cut the part of the punch die from white and work as much as possible in the original colours. Complete the card with enamel dots.



Extra needed for this card:

Collectables: COL1397 (Charming alphabet), COL1398 (Eline's banners), Papicolor card Original: spring green (951), Christmas red (943), Enamel dots: PL4503 (black and white)

Fold a kraft card (13.5 x 27 cm) in half and adhere 13 x 13 cm cream-coloured card and 12.5 x 12.5 cm design paper. Die-cut the wreath and separate twigs 2x from three shades of brown. Adhere together and slip the twigs between the wreath. Die-cut the bow from Christmas red. Die-cut the punch die from green, Christmas red and white. Work some of the green leaves. Work the white corncocks in their natural colours. Slip the leaves, corncocks and red twigs between the wreath. Die-cut the banner from cream and the text from mocha. Fold the banner on both sides and adhere the text. Complete the card with brown enamel dots.