

# The Collection #62



By Rimmie van de Sande  
butterflykisses83.blogspot.com

## Materials used for all cards:

Collectables: COL1445 (Eline's Craft Dates), COL1446 (Eline's Kangaroo), COL1447 (Eline's Zebra/Donkey), COL1448 (Eline's Koala), Die cut and embossing machine, Clear stamps: EC0171 (Eline's Baby texts), Ink pad: Versafine onyx black, Design paper: PB7054 (Crafty Patterns), Rope, White gel pen



### Extra needed for this card:

Collectables: COL1421 (Eline's Baby Essentials), Craftables: CR1360 (Basic shapes-Circle), CR1402 (Bendy card), Design folder: DF3445 (Japanese Star), Adhesive gems: JU0937 (pink), Enamel stickers: PL4513 (baby blue)

Cut a 15 x 15 cm white single-fold card.

Cut 14.5 x 14.5 cm white card and work with the design folder.

Die cut the flaps for the bendy card from design paper.

Die cut the following shapes from various card colours and design paper: koala, baby koala, zebra, kangaroo, baby kangaroo, car, rattle, circle, label and two pieces of patchwork fabric. Stamp the text with Versafine onyx black on to 3 x 3.5 cm kraft.

Stamp another text on to 2 x 5 cm white card using Versafine onyx black and work the edge with the stitches stencil.

Finish off the card.



### Extra needed for this card:

Collectables: COL1421 (Eline's Baby Essentials), COL1444 (Rosettes & Labels)

Copy the pattern onto kraft card. Adhere 8.7 x 11.2 cm design paper to 9.1 x 11.6 cm white card.

Cut two 5.2 x 8.7 cm rectangles from design paper and adhere to 5.6 x 9.1 cm white card. Cut four 3.7 x 5.2 cm strips from design paper and adhere to 4.1 x 5.6 cm white card.

Adhere the layers to the box. Cut three 1.5 x 10.4 cm strips from kraft card and score/fold at 0.5 en 9.9 cm. Cut 2 x 9.4 cm strips from design paper and round off the top corners. Die cut the following shapes from various card colours and design paper: kangaroo, baby kangaroos, koala, baby koala, blocks, bottle, teat and rosette. Stamp the text on to the circle using Versafine onyx black. Finish off the card/box.



### Extra needed for his card:

Collectables: COL1422 (Eline's Baby Animals), Design folder: DF3445 (Japanese Ster), Enamel stickers: PL4513 (baby blue)

Cut a 10.5 x 14.8 cm white top-fold card.

Adhere 8 x 9.5 cm design paper to 8.4 x 9.9 cm dark blue card.

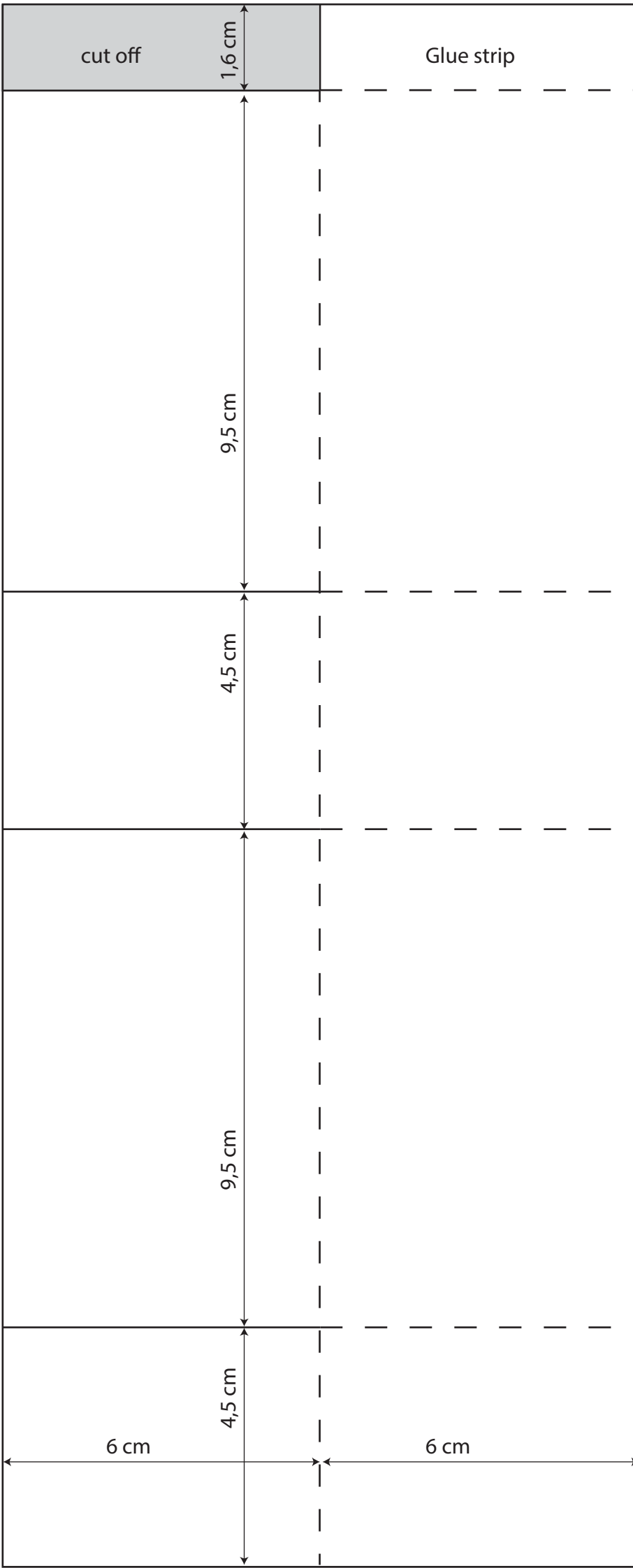
Cut a 1 x 14.8 cm white strip and a 4 x 14.8 cm one from design paper.

Die cut the following shapes from various card colours and design paper:

Donkey, patchwork fabric and a cradle.

Cut two 2.5 x 4.3 cm white rectangles. Stamp the text onto one of them using Versafine onyx black and work the other one with the design folder.

Finish off the card.



Glue strip

Pattern box

By Boukje van der Weit  
boukjesblog.blogspot.com



#### Materials:

Collectables: COL1445 (Eline's Craft Dates), Craftables: CR1356 (Flower set Fancy), CR1358 (Flower set Sweet), Creatables: LR0398 (Build a Rose), Nestability: Circle, Die cut and embossing machine, Clear stamps: EC0166 (Craft Dates 1), EC0167 (Craft Dates 2), Ink pads: Stazon cloudy sky

and olive green, Distress ink: vintage photo, Decoupage sheet: MB0172, Design paper bloc: PB7054 (Crafty Patterns), Papicolor card: Original pearly white (930) and olive green (945), Recycled kraft brown (323) and green (320), Old-Dutch card 15 x 15 cm, Adhesive pearls, Metal tape (DIY Store), Paper clip, Twine: green (Dille & Kamille), Sewing thread

Cut 14.5 x 14.5 cm design paper and stamp a border of pins. Die cut a white circle, stamp a text in grey and green and attach to the upper right-hand corner using a small paper clip. Adhere to an old-Dutch card. Cut out the picture, adhere to design paper and trim leaving a narrow border, Repeat this with green kraft card and olive green card. Die cut a rectangle from design paper, cut in half and glue both parts partially behind the card as shown. Die cut a pair of scissors from metal tape 2x and adhere together. First tie the rope to the pair of scissors and then to the paper clip. Wrap sewing thread around the spool and glue in position together with the flowers.

By Petra van Dam  
hobbykaartenpetra.nl

#### Materials used for both cards:

Creatables: LR0457 (Petra's Circle with Bird), LR0458 (Petra's Square with Nest), LR0511 (Petra's special Circle), LR0512 (Petra's Apple blossom), Die cut and embossing machine, Decoupage sheet: EWK1254 (Herbs & Leaves), Design paper bloc: PK9152 (Herbs & Leaves), Vellum, Distress ink: antique linen, frayed burlap, pumice stone, bundled sage, peeled paint, Papicolor card: Original silver grey (902), pearly white (930), dark brown (938), nut brown (939), mocha (953), army green (954), light grey (957), Metallic: pearlwhite (330), platinum (335), gold (338), Flat-backed shiny pearls brown D108, Shiny pearls white CA3132, K1001 Embroidery lace 9 mm, CG1007 Satin ribbon mint green 10 mm, K1086 Organza ribbon with silver thread 6 mm taupe

#### General instructions:

Read the measurements as follows: the sizes in cm are indicated as: first you see the height and then the width. So 10 x 5 cm means 10 cm high and 5 cm wide. Adhere ribbon/lace with double-sided tape.



**1. Folding the card:** Take a dark brown A4-sheet. Fold at 15 cm (=back) and 16 cm. 13.7 cm will remain (=front). Make a diagonal fold on the front as per example. Adhere at the front. Score (whole width) at 6 cm from the bottom. From the bottom make a 6 cm incision into the fold. Cut off a 1 cm wide strip creating two flaps. See photo. Fold the flaps inside. Adhere the ribbon (see green text in photo).



**2. Inside.** Cut 10 x 14.7 cm brown design paper and adhere to dark brown. Fold the flaps inside and adhere.



**3. Front.** Cut a triangle from light grey and design paper. Light grey: high 15 cm, bottom 13.7 cm wide. Cut this off in a diagonal line, 1.5 cm up from the bottom on the right-hand side.

Design paper: high 14.5 cm, bottom 13.3 cm wide. Cut this off in a diagonal line, 1.2 cm up from the bottom on the right-hand side.

Adhere the embroidery lace on the left behind light grey. Then adhere the layer to the dark brown card (card front).

Die cut/emboss the special circle (LR0511) from pearly white. Layer the picture behind the aperture. Push the flowers forward and finish off with vellum and a pearl.

Finish off the leaves with silver grey.

Lay the stencil on the reverse side of nut brown card. Trace the outline in pencil and cut out.

Adhere the pearly white special circle with 3D-glue to the nut brown card. Set aside to dry.



Die cut/emboss the apple blossom 2x from nut brown, caramel, pearlwhite and army green.

Adhere together as per example.

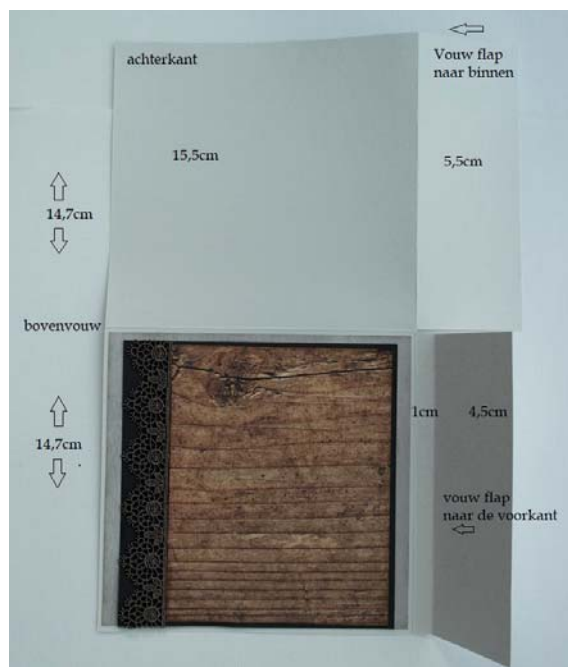
Die cut/emboss the birds from platinum and gold. Adhere together as shown.





### Extra needed for this card:

Distress ink: barn door, Decoupage sheet: EWK1255 (Herbs & Leaves), Papicolor card Original: fiesta red (918), pearly white (930), taupe (961), CG1005 organza ribbon moss green 6 mm, LB1004 Lace/(in Dutch etskant) dark brown 22 mm  
 Making rings: Craftables: CR1331 and COL1362



**1. Folding the card:** Take a light grey A4-sheet. Fold in half (=top-fold) and open again. Score (whole width) at 5.5 cm in from the bottom. From the bottom make a 5.5 cm incision into the fold. Turn the paper (see photo) to get the flaps on the right-hand side. Fold one flap inside and one flap forward. The flap folded inside is the back of the card. The flap folded forward is the card front. Fold the front flap at 1 cm as show. Cut 14.4 x 14.9 cm grey design paper and adhere to the front of light grey. Cut 14 x 13.5 cm dark brown and 14.9 x 5.4 cm design paper. Adhere together as per example. Adhere the lace on the left-hand side.



**2. Finishing off the inside:** Cut 14.5 x 10.5 cm taupe and adhere to light grey. For the flap: cut a 14.7 x 5.4 cm dark brown strip and 14.3 x 5 cm design paper. Adhere the design paper to dark brown. Fold the flap inside. Adhere the flap on both sides (leave centre open).

**3. Card front:** Die cut/emboss the special circle (LR0511) 2x from pearly white. Adhere one circle behind the aperture. Cut the other one in half as shown. Die cut/emboss the strawberries from fiesta red and the leaves from army green. Adhere the leaves to the border as shown. Push the flowers forward and finish off with vellum and a pearl. Set aside to dry.





Die cut three rings from pearly white card using Craftables CR1331 and Collections COL1362. (Attention: secure the stencils with low tack tape so they will not slide). Adhere the three layers together and then around the picture as shown. Adhere the pearly white decorative border with leaves to the rings. Glue the strawberries in place. Die cut/emboss the birds from platinum. Set aside to dry.

For the flap: cut a 15.3 x 5.8 cm dark brown strip and 14.9 x 5.4 cm design paper. Adhere together, design paper on top. Place the card upright. Adhere the strip to the flap aligned with the bottom. Adhere the right-hand part of the decorative border to the flap.

By Wybrich van der Roest  
wybrich.blogspot.com

**Materials used for all cards:**

Die cut and embossing machine, Distress ink oxide: iced spruce, worn lipstick/fired brick, Design paper bloc: PK9152 (Herbs & Leaves), Papicolor card Original: pearly white (930), aubergine (909), moss green (951), army green (954), mauve (937), purple (946), Water Art paper, Foam pads



**Extra needed for this card:**

Craftables: CR1360 (Basic shapes with stitches-Circle), CR1413 (Cactus), CR1431 (Succulent-V-shaped tips/petals used), CR1432 (Herbs & Leaves), Decoupage sheet: EWK1255

Cut a 10.5 x 15 cm pearly white top-fold card and 10 x 14.5 cm and 9.5 x 14 cm design paper. Die cut the circle from aubergine card and die cut the image with the same die. Adhere overlapping. Die cut the succulent from water art paper and work with distress ink oxide. Adhere the succulent parts together with foam pads. Die cut leaves from army green, work with distress ink oxide and adhere behind the succulent. Die cut the flower pots from aubergine, the cactus from army green and the small pots also from aubergine. Put the cactus into the flower pot. Die cut two smaller succulents from water art paper and work with distress ink oxide. Die cut leaves from green and work with distress ink oxide too.

Tie wax cord through the small succulent.



**Extra needed for this card:**

Craftables: CR1430 (Succulent-round), CR1432 (Herbs & Leaves)

Cut a 10.5 x 15 cm pearly white top-fold card and design paper measuring: 10 x 14.5 cm, 8.5 x 13.5 cm and 8 x 13 cm. Die cut the succulent from army green and work with distress ink oxide. Adhere the plant together with foam pads. Cut two labels from design paper, adhere to brown design paper and trim leaving a narrow border. Punch holes and tie wax cord through.

Die cut/emboss leaves from army green card and water art paper and work with distress ink oxide. Cut a 1.5 x 14.5 cm strip from design paper and adhere the labels and leaves behind. Adhere leaves along the top and bottom of the card too. Punch a small circle and glue to the stems.



**Extra needed for this card:**

Craftables: CR1430 (Succulent-round), CR1432 (Herbs & Leaves), Design folder: DF3446 (Blossom), Clear stamps: EC0167 (Craft Dates 2), Ink pad: Archival black

Cut a 10.5 x 15 cm pearly white single-fold card and 10 x 14.5 cm and 9.5 x 14 cm design paper. Emboss 9 x 13.5 cm pearly white card with the design folder.

Die cut the round succulent from purple and mauve and adhere together with foampads. Die cut a few twigs from mauve. Glue in position behind the succulent. Stamp a text, cut out and tie wax cord through.

Adhere a few twigs and leaves behind the text.

### Materials used for all cards:

Collectables: COL1443 (Giftwrapping-Karin's Bird, Hearts & Tag), Die cut and embossing machine, Ink pad: Memento tuxedo black, Design paper bloc: PB7054 (Craft Patterns), Papicolor card Original: pearly white (930), Thin jute rope



**Extra needed for this card:**  
Clear stamps: EC0168 (Eline's Baby Elephant), EC0169 (Eline's Baby Giraffe), EC0170 (Eline's Baby Zebra/Donkey), Derwent Coloursoft pencils, Papicolor card: sea green (917), heather (922), Mica,

Enamel dots: PL4513 (baby blue), Silver-coloured sequins

Cut a 15 x 10.5 cm pearly white top-fold card. Mount on top: 14.5 x 10 cm design paper, 14 x 9.5 cm sea green card and 11.5 x 7 cm pearly white card. Cut 12.5 x 8 cm design paper and cut out three 3 x 3 cm squares. Layer a strip of mica behind the three squares. Adhere 3D-tape all around the three apertures and along the edges of the rectangle. Sprinkle sequins on to the white paper. Then glue the designpaper with the mica and 3D-tape on top. The shaker part is finished now.

Stamp the animals on to smooth white paper and colour them in with the coloured pencils. Glue the animal heads in position using 3D-tape. Finish off the card with banners, a text and enamel dots.



**Extra needed for this card:**  
Collectables: COL1442 (Giftwrapping-Karin's Deer, Stars & Tag), Craftables: CR1356 (Flower set Fancy), Design folders: DF3445 (Japanese star), DF3446 (Blossom), Clear stamps:

EC0168 (Eline's Baby Elephant), EC0169 (Eline's Baby Giraffe), Papicolor card: sea green (917), mocha (953), Vellum, Corner rounder punch, Enamel dots: PL4512 (baby pink), PL4513 (baby blue), Fold back clips

Copy the pattern of the birth bag onto the back of design paper. Cut out and punch round corners on the flap. Fold and glue the bag together.

Die cut the large label from white card and work with the embossing folder.

Die cut the small rectangle with two holes and glue it around the top of the label and tie rope through. Adhere to the bag.

Die cut the banner from design paper, stamp the text and attach with a fold back clip.

Stamp the animal on to design paper, cut out and adhere with 3D tape.

Complete the birth bag with a flower and enamel dot.



**Extra needed for this card:**  
Collectables: COL1315 (Tab with Text), Craftables: CR1375 (Basic shapes-Distressed Square), Design folders: DF3445 (Japanese Star), Clear stamps: EC0170 (Eline's Baby Zebra), Derwent Coloursoft

pencils, Papicolor card: sea green (917), blue (955), Enamel dots: PL4513 (baby blue)

Cut a 13.5 x 13.5 cm pearly white top-fold card and mount 13 x 13 cm design paper on top.

Cut 12 x 12 cm pearly white and work with the embossing folder.

Cut a 13.5 x 5 cm strip from design paper.

Die cut the note paper with perforated edge from sea green and the distressed square from design paper.

Die cut a blue tab and stamp a text. Adhere the layers as per example.

Stamp the zebra on to smooth white paper and colour in with the coloured pencils, then adhere using 3D-tape.

Complete the card with banners, a text and enamel dots.

