

# The Collection #63



By Rimmie van de Sande  
[butterflykisses83.blogspot.com](http://butterflykisses83.blogspot.com)

## Materials used for the card and box-card:

Craftables: CR1355 (Grass), CR1399 (Punch die-Eggs), CR1433 (Card box), CR1434 (Punch die-Bows), Creatables: LR0448 (Mix & Match-Bows), LR0519 (Easter Bunny with Bow), LR0520 (Basket), Die cut and embossing machine, Clear stamps: CS1000 (Happy Easter), Ink pad: Versafine onyx black, Distress ink, Decoupage sheet: HK1702 (Hetty's Easter), Design paper pad: PK9122 (Nanny memories), PK9127 (Watercolour), PB7054 (Crafty patterns), Decoration paper: CA3126 (gold), CA3127 (silver), CA3134 (mirror card-gold), CA3135 (mirror card-silver), Diamond gems: JU0937 (pink), JU0938 (blue), Rope, White gel pen

## General instruction:

Highlight the embossed areas with distress ink.



### Extra needed for this card:

Collectables: COL1394  
(Helleborus; corona=card box die), Card: white, light blue, light green

Trace the pattern onto a 13.5 x 26.6 cm strip of white card. Cut design paper: 6 x 10 cm, 3 x 13 cm, 3 x 9.5 cm (2x) and 3 x 3 cm (2x) and adhere. Cut out the picture to measure 7 x 8 cm and adhere to 7.4 x 8.4 cm light blue card.

Die cut two strips of grass from light green card.

Using Versafine onyx black stamp a text onto 3.5 x 4 cm white card and adhere to 4 x 4.5 cm design paper.

Then die cut the following shapes from various card colours: Easter bunny, basket, Easter eggs, bows, corona of daffodil, daffodil and twigs. Glue all pieces in position.



### Extra needed for the card box:

Collectables: COL1425 (Easter eggs), Card: greyish kraft, light green

Die cut the card box 2x from greyish kraft. Use the other dies to die cut design paper and adhere to the box.

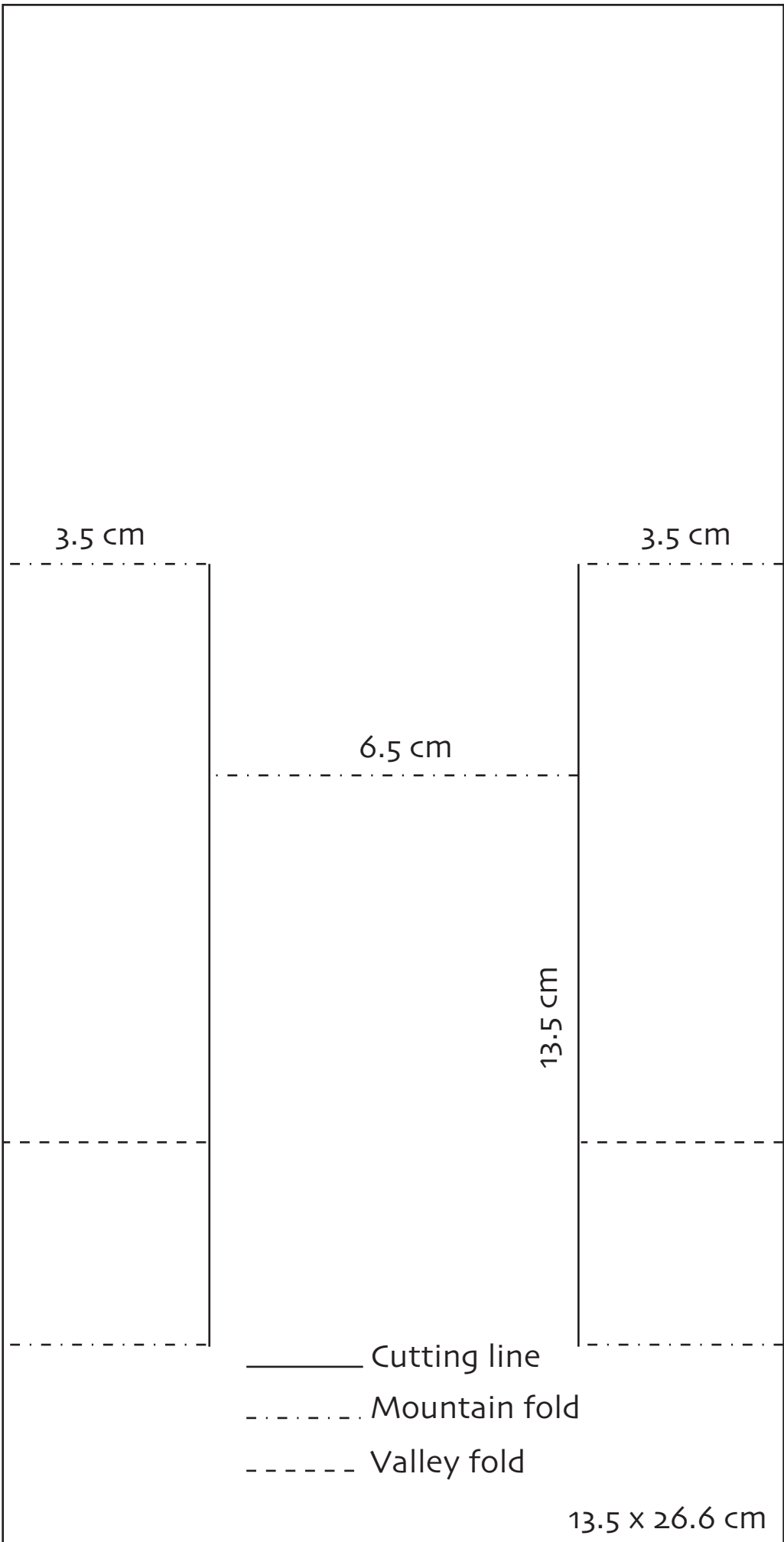
Die cut three scenery bars and glue six die cut strips of light green grass on to them.

Cut 4 x 4 cm design paper and adhere to 4.5 x 4.5 cm kraft.

Stamp a text using Versafine onyx black.

Then die cut the following shapes from various card colours: two Easter bunnies, basket, Easter eggs big and small, bows, daffodil and twigs.

Glue all pieces in position.



By Jeannette Bron

**Materials used for all cards:**

Die cut and embossing machine



**Extra needed for this card:**

Collectables: COL1398 (Banners XL), Craftables: CR1237 (Coffee cup, saucer, spoon), CR1359 (Basic shapes with stitches-Square), Creatables: LR0204 (Grass, birdhouse, bird), LR0205 (Fence, birdhouse, bird), LR0206 (Ivy, birdhouse, bird), LR0360 (Tiny's Grass), LR0402 (Tiny's Grape Hyacinth), LR0515 (Birdhouse, twigs), LR0517 (Semi-circle with flowers), Design folder: DF3444 (Anja's flower border), Clear stamps Project NL: PL1523 (Flowers), Ink pad: Versamark

Fold the front panel of the single-fold card back to the fold. Die cut/emboss the semi-circle on to the white square and die cut the solid scalloped border on to the mint green one. Emboss the other mint green square on the rectangle and adhere to the card. Die cut and emboss the other dies. Highlight the grape hyacinth with distress ink peeled paint, the willow catkins with white Versamark and the birds and birdhouse with distress ink walnut stain. Glue all pieces in position.



white, Distress ink: peeled paint, walnut stain, Decoupage sheet: VK9565, Card: white single-fold card 14 x 14 cm and 13 x 13 cm square, mint green 13.5 x 13.5 cm (2x) and 12.5 x 6 cm, Brad, Rope



**Extra needed for this card:**

Creatables: LR0401 (Tiny's Tulip), LR0516 (Rectangle with flowers), LR0518 (Wavy flower border), Distress ink: spun sugar, Design paper pad: PK9152 (Herbs & Leaves), Decoupage sheet: VK9565,

Score the white strip at 6, 8, 20 and 22 cm and fold the card. Die cut/emboss the wavy flower border on to the white rectangle, adhere to pink and trim leaving a narrow border. Die cut/emboss the other dies. Highlight the tulips and willow catkins with white Versamark, the birdhouse with distress ink walnut stain and the flowers with spun sugar. Glue all pieces in position.

Card: white strip 14.5 x 28 cm and 13 x 10.5 cm, pink



**Extra needed for this card:**

Creatables: LR0360 (Tiny's Grass), LR0514 (Deer lying down), LR0518 (Wavy flower border), Design folder: DF3438 (Trendy Hearts), Clear stamps: (PL1523 Flowers), TC0863 (Grass border), Distress ink:

Die cut/emboss the wavy flower border on to the white card and highlight the flowers with distress ink spun sugar. Stamp the grass border and flowers and colour in with Copic markers. Die cut/emboss the deer and colour in with distress ink walnut stain; make the white spots with a gel pen. Emboss the hearts on to the white rectangle, adhere to pink and trim leaving a narrow border. Glue all pieces in position.

spun sugar, Copic markers, White gel pen, Card: white single-fold card 10.5 x 15 cm, rectangles: white 9.5 x 14 cm and pink 10 x 14.5 cm

By Marleen van der Most  
handmadebymarleen.blogspot.com

#### Materials used for both cards:

Collectables: COL1423 (White picket fence), Craftables: CR1394 (Punch die-Flower garden), CR1402 (Bendy card-used for clouds), Creatables: LR0360 (Tiny's Grass), Die cut and embossing machine, Clear stamps: HT1603 (Luchtpost/Airmail), Ink pad: Memento tuxedo black, Design paper pad: PK9122 (Nanny Memories), Papicolor card: Recycled kraft card: grey (322), Original pearly white (930) and nut brown (939), Marker paper, Vellum, Illustrator markers, Thin green jute rope

Look for the tutorial masking technique from Wilga van 't Zelfde on the download of #36.



#### Extra needed for this card:

Clear stamps Hetty: HT1606 (Animals), HT1630 (Baby animals), HT1633 (In the meadow), Papicolor card Original: heather (922), mauve (937), Diamond gems: JU0937 (light pink & pink)

Cut a 15 x 15 cm white top-fold card and layer 14.5 x 14.5 cm mauve card, 14 x 14 cm and 15 x 8.5 cm design paper on top. Die cut a cloud from white card and vellum and adhere as shown. Cut 14.8 x 7.3 cm recycled kraft and adhere slantwise. Cut 14.3 x 6.8 cm marker paper and stamp the landscape, horse and foal (use the masking technique) and colour in with markers. Then adhere to kraft. Die cut the fences, grass and flowers and glue in position. Finish off the card with a text, bow of jute rope and adhesive stones.



#### Extra needed for this card:

Clear stamps Hetty: HT1631 (Chicken family), HT1632 (On the farm), Papicolor card Original: carnation white (903), cream (927)

Cut a 15 x 10.5 cm white single-fold card and layer 14.5 x 10 cm cream card and 14 x 9.5 cm and 10.5 x 5.5 cm design paper on top. Die cut the cloud from white card and vellum and adhere in the top left corner. Cut 14.8 x 7.3 cm recycled kraft and adhere slantwise. Cut 14.3 x 6.8 cm marker paper and stamp the farm, chicken and chicklet (use the masking technique), colour in with markers. Then adhere to the kraft card. Die cut the fences, grass and flowers and adhere. Finish off the card with a text and a bow of jute rope.

By Sigrid Klingenberg  
sigridklingenberg.blogspot.nl

#### Materials used for both cards:

Craftables: CR1417 (Punch die-ABC), Clear stamps Tiny's Mixed Media: MM1617 (Stains), MM1618 (Birds), MM1619 (Birds), Mask stencils: PS8003 (Bark), PS8004 (Feathers), PS8005 (Speckles), Stamp master: LR0009, Distress ink: gathered twigs, Ink pad: black, Stamping paper: white, Masking paper, Papicolor card Original: black (901), pearly white (930), Markers (Copics), Embossing enamel: shabby white, Fineliner: black, Heat tool

#### General instruction:

Use the masking technique (download #36).



#### Extra needed for this card:

Mask stencil PS8002: faded corduroy, Distress ink: candied apple, spiced marmalade, worn lipstick

Stamp the birds on to 14 x 9.5 cm stamping paper and masking paper, cut out the latter ones. While the birds are covered with the masks, colour the stamping paper with distress ink. Use mask stencils to make faded corduroy and feathers motifs. Sprinkle a little water on to the paper to create water stains. Allow to dry. Sprinkle embossing enamel on to the paper and heat with a heat tool. Draw wiggly lines along the sides using a fine liner. Adhere the rectangle to 15.5 x 10 cm black card. Cut 17.5 x 12 cm stamping paper and colour with distress ink. Use the mask stencil and distress ink to make bark motifs. Adhere the paper first to 18 x 12.5 cm black card and then to a 19 x 13.5 cm pearly white single-fold card. Remove the masking paper from the birds and colour them in with markers. Die cut the letters from black card, adhere to stamping paper and cut into 1 cm high strips. Colour the paper with distress ink. Make water stains on the strips too. Adhere the text strips with 3D-kit to the card.



**Extra needed for this card:**  
Mask stencil: PS8001 (Cobble stone), Distress ink: moved lawn, squeezed lemonade, twisted citron

Cut 10.5 x 13 cm stamping paper and stamp a bird in black ink. Stamp the same bird on to masking paper and cut out. While the bird is covered with the mask, colour the stamping paper with distress ink. Use mask stencils to make speckles, bark and feathers. Sprinkle a little water on to the paper to create water stains. Allow to dry. Stamp stains using black ink and distress ink. Sprinkle embossing enamel on to the paper and heat with a heat tool. Draw wiggly lines along the sides using a fine liner. Adhere the decorated rectangle to 11 x 13.5 cm black card. Cut 13 x 15.5 cm stamping paper and colour with distress ink. Use the mask stencil to make cobble stones. Adhere to a 13.5 x 16 cm black card. Stamp another bird on to stamping paper and cut out. Remove the masking paper from the first bird and colour in both birds with markers. Adhere all rectangles to a 14.5 x 17 cm pearly white single-fold card. Die cut the letters from black card, adhere to stamping paper and cut into 1 cm high strips. Colour the paper with distress ink. Make water stains on the strips too. Adhere the text strips and the second bird with 3D-kit to the card.

By Wybrich van der Roest  
[wybrich.blogspot.com](http://wybrich.blogspot.com)

**Materials used for all cards:**

Die cut and embossing machine, Clear stamps Els: EWS2224 (Silence), Ink pad: Archival black, Design paper pad: PK9154 (Eternity), Papicolor card: pearly white (930), Recycled kraft card: white (321), Vellum



**Extra needed for this card:**  
Creatables: LR0513 (Dandelion)

Cut a 10 x 16 cm pearly white top-fold card and mount 9 x 15 cm design paper on top. Cut a narrow pearly white strip and adhere along the side. Die cut the dandelions from white recycled kraft card. Tear a 4 cm wide strip of vellum along the edge of a ruler. Stamp the text, fold the sides around the design paper and adhere to the reverse side.



**Extra needed for this card:**  
Craftables: CR1331 (Basic shapes-Circle), CR1360 (Basic shapes with stitches-Circle), Creatables: LR0430 (Leaf doily), LR0509 (Tiny's Butterfly set), Decoupage sheet: EWK1256 (Silence)

Cut a 12.5 x 12.5 cm pearly white top-fold card. Mount 11.5 x 11.5 cm and 11 x 11 cm design paper on top. Die cut a circle with stitches from design paper. Die cut the picture with a straight circle die; adhere both circles overlapping. Tear a 2 cm wide strip of vellum along the edge of a ruler. Stamp a text, fold the sides around the design paper and adhere to the reverse side. Die cut leaves and a butterfly from recycled white card.



**Extra needed for this card:**

Clear stamp: TC0864 (Tiny's callas), Watercolour paper, Distress ink/markers

Cut a 10 x 16 cm pearly white top-fold card and mount 9 x 15 cm design paper on top.

Tear a 4 cm wide strip of vellum along a ruler.

Fold the top and bottom around the design paper and adhere to the reverse side.

Stamp the flowers on to 6.5 x 14.5 cm watercolour paper. Colour in with distress ink/markers.

Stamp the texts.