

# The Collection #65



By Marleen van der Most  
handmadebymarleen.blogspot.com

## Materials used for all cards:

Creatables: LR0469 (Hedera), LR0512 (Petra's Apple blossom), Design folder: DF3424 (Pearls), Die cut and embossing machine, Clear stamps: CS0996 (Birthday wishes), Inkpad: VersaMark, Embossing powder: Stampendous White EP100, Heat tool, Design paper pad: PK9127 (Watercolour), Papicolor card: Recycled kraft green (328), Original silver grey (902), pearly white (930), Vellum, Adhesive flat-backed pearls: CA3133 (off-white), Lace, Paper distresser

## General instructions:

- Work the edges of the coloured top cards with a paper distresser.
- Use VersaMark ink to stamp a transparent text onto a strip of vellum. Then work it with embossing powder and a heat tool.



**Extra needed for this card:**  
Creatables: LR0530 (Royal frame), Papicolor card: pale pink (923), Decoupage sheet: EWK1244 (Whispering – colour)

Cut a 15 x 15 cm pearly white single-fold card, 14.5 x 14.5 cm light pink card and 14 x 14 cm dark pink design paper. Cut a 15 x 7 cm strip from orange design paper, emboss the pearls and adhere, together with lace. Die cut the frame 2x from pearly white. Adhere the first one to the card and keep the second one aside. Die cut the largest template of the frame from purple/blue design paper and adhere to the card, glue the second white frame on top. Die cut the picture from the decoupage sheet, either with a circular die (CR1331) or draw a circular paper template with a pair of compasses. Leave the petals/leaves intact and do not colour them either. Adhere with 3D-tape and finish off.



**Extra needed for this card:**  
Craftables: CR1438 (Basic shapes-Square), Decoupage sheet: EWK1244 (Whispering – colour), Papicolor card: lavender (921), pale grey (957)

Cut a 15 x 10.5 cm pearly white top-fold card, 14.5 x 10 cm lavender and 14 x 9.5 cm purple/blue design paper. Adhere together. Cut a 15 x 5 cm strip from green design paper, emboss the pearls and adhere, together with lace. Die cut the square with decorative border from pearly white and the smaller one from dark pink design paper. Place a smaller die onto the picture and trace around it. Keep the leaves, tips of the petals and the butterfly on the left intact, do not draw on them either. Cut out and adhere with 3D-tape. Finish off.



**Extra needed for this card:**  
Craftables: CR1439 (Basic shapes-Arch), Creatables: LR0509 (Tiny's Butterflies set), Decoupage sheet: EWK1243 (Whispering – white), Papicolor card: carnation white (903)

Cut a 15 x 10,5 cm pearly white single-fold card, 14.5 x 10 cm carnation white card and 14 x 9.5 cm green design paper. Adhere together. Cut a 15 x 3.5 cm strip from orange design paper, emboss the pearls and adhere, together with lace. Die cut the arch with decorative edge from pearly white and adhere with 3D-tape. Die cut the smaller arch from light yellow design paper and emboss the pearls. Cut out the flowers from the decoupage sheet and adhere with 3D-tape. Finish off.

By Tineke van der Linden

[www.tinekeskaartenhoekje.blogspot.nl](http://www.tinekeskaartenhoekje.blogspot.nl)

### Materials used voor both cards:

Creatables: LR0525 (Anja's Border-set of 2), LR0526 (Anja's Floral ornament), Die cut and embossing machine, Clear stamps Project NL: PL1523 (Flowers), Distress ink: pumice stone, picket fence, Inkpad: Versafine onyx black, Design paper-bloc: PK9127 (Watercolour), Papicolor card: Original pearly white (930), army green (954), olive green (945), Recycled kraft grey (322), Ribbon, Adhesive flat-backed pearls: CA3132 (white)



#### Extra needed for this card:

Craftables: CR1374 (Box card-branch used), Creatables: LR0400 (Tiny's Crocus), LR0458 (Petra's Square with nest), Distress ink: dusty concord, rusty hinge, Decoupage sheet Mattie's Mooiste: MB0174 (Springflowers), Papicolor card: Original mango (940), dark brown (938), purple (946), mauve (937)

Cut a 14.5 x 14.5 cm pearly white single-fold card and 14 x 14 cm design paper. Cut a 30 x 20 cm brown strip, make a fold at 15 cm and cut off the back at a 15 cm height. Die cut/emboss the border from white and adhere between the white and brown card. Place the die onto the embossed part, trace the top and cut off. Die cut a square from pearly white, layer the picture behind, mat on dark brown card and adhere raised with foam pads. Die cut the bird from pearly white, work with distress ink pumice stone and rusty hinge and position on the green floral ornament. Die cut the crocuses from pearly white, mauve (work with distress ink dusty concord), purple (work with distress ink picket fence) and mango, and place them between the olive green leaf and finish off with a bow. Die cut a branch from recycled brown kraft and the leaves from army green. Stamp a text on to the card. Finish off with a few pearls.



#### Extra needed for this card:

Collectables: COL1423 (White picket fence), COL1443 (Giftwrapping - Karin's bird, hearts & tag), Creatables: LR0399 (Tiny's Daffodils), LR0402 (Tiny's Grape Hyacinths), LR0454 (Anja's Butterfly),

Distress ink: scattered straw, Papicolor card: cream (927), lavender (921), iris blue (931), Recycled kraft black (324), Decoupage sheet Mattie's Mooiste: MB0175 (Garden), Viva Decor Inka gold silver, Wax cord

Cut a 14 x 19 cm iris blue strip and score folds at 2.5 en 5 cm from the left-hand side. Adhere 13.5 x 13.5 cm pearly white and 13 x 13 cm design on the right-hand part. Die cut the border using the die of the narrow strip at the same time, from pearly white card and adhere to 14 x 6 cm iris blue. Place the large die on to the embossed part, trace the outline and trim. Adhere to the small flap. Die cut the circle from lavender and pearly white, layer the picture behind and adhere to the card with foam pads. Die cut the floral ornament from olive green and decorate with flowers. Die cut the leaf of the grape hyacinths from army green and the one of the daffodils from olive green. Die cut the daffodils from pearly white and work with distress ink scattered straw. Die cut the fence from recycled black kraft, work with Inka gold silver and position in front of the spring flowers. Stamp a text onto a tag from design paper and tie wax cord to it. Finish off the card with pearls and a bow of seambinding.

**Materials used for both cards:**

Creatables: LR0474 (Kim's Buddies), LR0527 (Kim's Buddies-Pirate), LR0528 (Kim's Buddies-Knight), LR0529 (Kim's Buddies-Princess), LR0531 (Rainbow and Clouds), Die cut and embossing machine, Decoration paper: CA3126 (gold), CA3127 (silver), Inkpad: Versafine onyx black, Tope, White gel

Tip: Place white accents in the dolls' eyes.



Diamond jewels: JU0937 (pink)

**Extra needed for this card:**

Collectables: COL1323 (Flower set), Creatables: LR0530 (Royal frame), Decoupage sheet: EWK1242 (Kim's Buddies-Girls), Design paper pad: PK9147 (Aqua colors),

Cut a 13.5 x 27.5 cm white base card and score folds at: 7.5 – 10.5 – 16.5 and 19.5 cm.

Cut design paper: 2x: 7 x 13 cm, 2x: 2.5 x 13 cm and 1x: 5.5 x 13 cm.

Cut four 3 x 7.5 cm strips from green design paper, tear off the top of the long sides.

Die cut from various card colours: two princesses, clouds, rainbow, royal frame and flowers.

Cut out the pictures and mat on pink card.

Cut out the picture with the cat on the cushion and adhere with foam pads.

Finish off the card as per example.



**Extra needed for this card:**

Collectables: COL1433 (Sea friends), Craftables: CR1353 (Labels), CR1405 (Rope), CR1409 (Fishing net), Clear stamps: PL1518 (Men), Design paper pads: PK9146 (Côte d'Azur), PK9152 (Herbs & Leaves)

Cut a 14.3 x 29.6 cm white base card and score folds at 14.3 and 15.3 cm. Trace the pattern onto the card front. Score, fold and cut the lines as per the pattern.

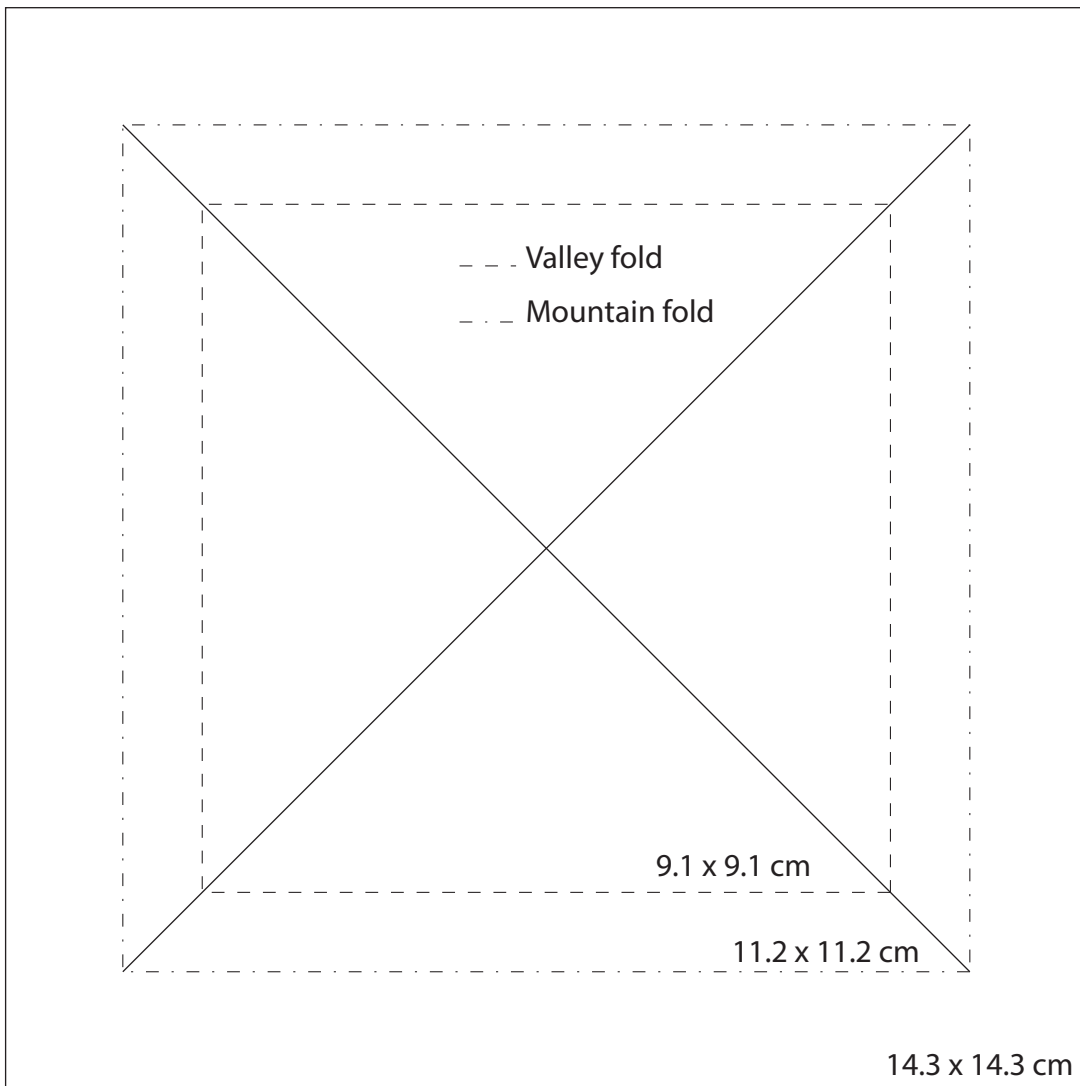
Cut 11 x 11 cm design paper and adhere inside the frame. First adhere 9.1 x 9.1 cm design paper to 11.2 x 11.2 cm white card and then adhere it to the reverse side of the card front.

Cut 13.9 x 13.9 cm design paper and cut an 11 x 11 cm square from its centre.

Cut two 3 x 11 cm strips from sand-coloured design paper. Tear off the edges a little, showing the white reverse side.

Die cut from various card colours: clouds, banners, fishing net, star fish, crab, jelly fish and a pirate.

Use Versafine onyx black ink to stamp a text onto the banner.



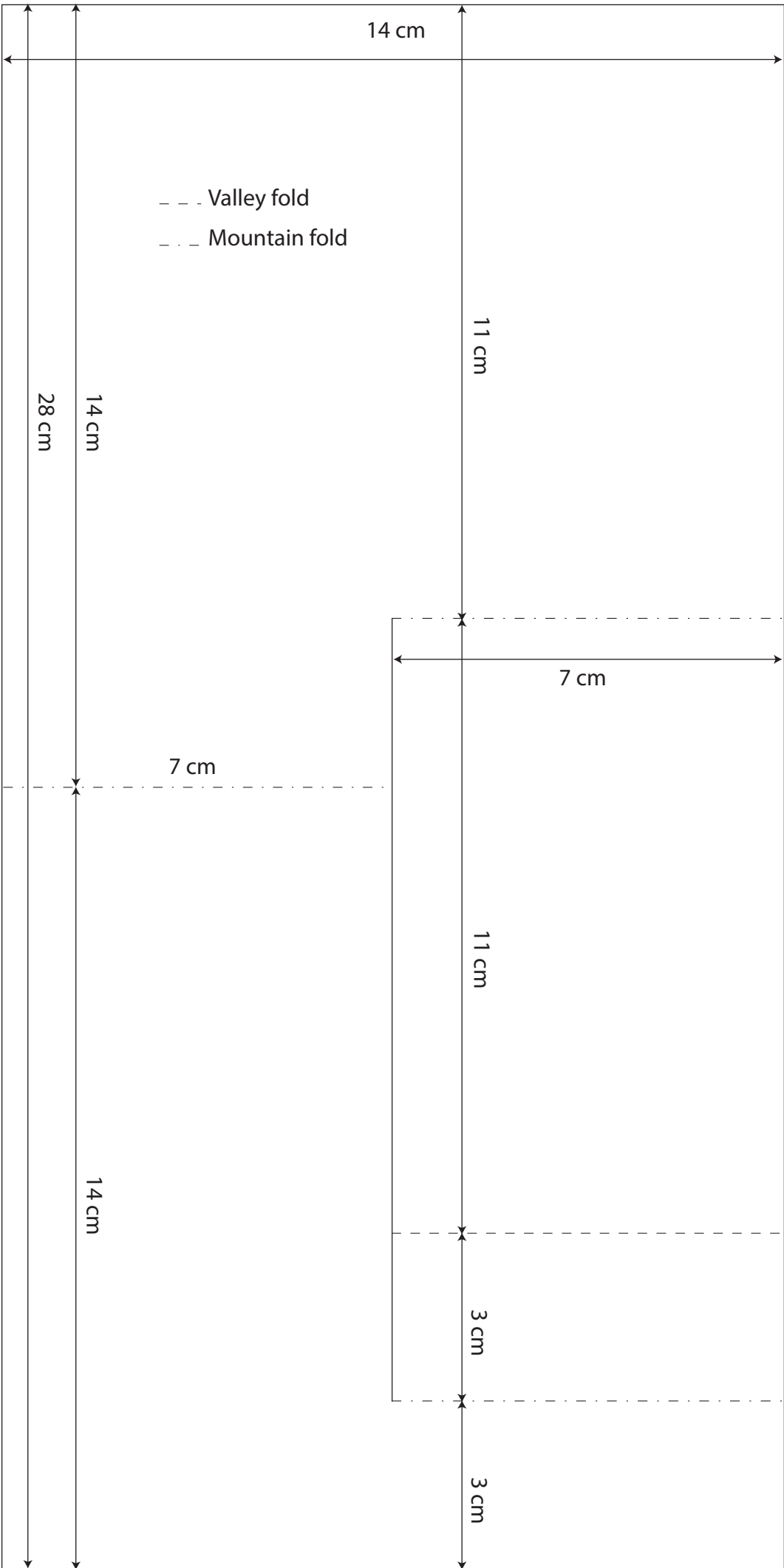
**Extra needed for this card:**

Craftables: CR1331 (Basic shapes-Circle), CR1353 (Labels), CR1360 (Basic shapes with stitches-Circle), CR1385 (Christmas tree/Nest with corners), Collectables: COL1404 (Castle), Clear stamps: CS0996 (Sending Birthday Wishes),

Decoupage sheet: EWK1241 (Kim's Buddies-Boys), Design paper pad: PK9147 (Aqua colors)

Trace the pattern on to a 14 x 28 cm white strip. Cut from various design papers: 2.5 x 13.5 cm, 6.5 x 10.5 cm, 2.5 x 6.5 cm and 6.5 x 7.5 cm. Adhere to the card.

Die cut the image and adhere to a circle from design paper. Die cut from various colours of card and design paper: stars, corners, banner, clouds, castle and a knight with sword and shield. Stamp a text onto the banner and star with Versafine onyx black. Adhere the stars together with a length of ribbon. Finish off the card as per example.





### Materials used for all cards:

Die cut and embossing machine, Inkpads: Memento tuxedo black, Card: white



#### Extra needed for this card:

Clear stamps Karin Joan: KJ1722 (Floralia), KJ1725 (Vertrouw/Trust), Inkpads Memento: pear tart, Distress ink: shabby shutters, crushed olive, Design paper pad: PK9147 (Aqua color), Card: olive green

Cut a 9 x 9 cm white top-fold card, 8.5 x 8.5 cm olive green and 8 x 8 cm water color paper.

Adhere a strip of craft tape at 5 cm up from the edge and colour in the narrow border with green ink. Stamp the flowers several times onto the coloured strip. Remove the tape and stamp the text.

Adhere all layers together neatly.



#### Extra needed for this card:

Collectables: COL1442 (Deer, Stars & Tags), COL1443 (Birds & Hearts), Design folder: DF3438 (Trendy Hearts), Clear stamp Karin Joan: KJ1721 (Gefeliciteerd/ Congratulations), Design paper pads: PK9114 (Kraft 15 x 30 cm), PK9147 (Aqua color),

Fold a sheet of kraft card from the bloc in half, creating a 15 x 15 cm card. Cut 13 x 13 cm pink design paper and 12.5 x 12.5 cm design paper with hearts. Layer together.

Cut a 13 x 3 cm white strip and a 12 x 2 cm one from kraft. Tear off a strip of the latest one.

Adhere the white strip at 3 cm up from the bottom (of the pink design paper) and the kraft strip on top using foam pads.

Die cut the deer, bird, text and label. Emboss hearts onto the label and thread a length of rope through. Adhere the label slantwise using foam pads. Adhere the hearts and bird to the label and the text to the kraft strip.

Finish off by stamping a text onto the white strip.

PK9149 (Do what you love), Decoration paper: CA3127 (silver), Twine



#### Extra needed for this card:

Clear stamps: KJ1722 (Floralia), KJ1723 (Folia), KJ1721 (Gefeliciteerd/ Congratulations), Brush pen Ecoline: red velvet, magenta, blue violet, ultramarine violet, Mica, White and black pen

Cut a 15 x 21 white strip and fold in half. Cut a 14.5 x 10 cm white rectangle too.

Take mica sheet and colour it with the brush pen. Spray a little water on top. Place the white rectangle onto it, press it down and remove again. Set the card aside to dry.

Then stamp the text and the flowers and draw a black line all around.

Highlight the flowers with a white pen and position on the card.



#### Extra needed for this box:

Craftables: CR1333 (Basic shapes-Oval), CR1386 (Pillow box), Clear stamps Karin Joan: KJ1724 (Encouraged), KJ1722 (Floralia), Design paper pad: PK9149 (Do what you love),

Die cut the box from design paper. Die cut the smallest oval from white card and the next size from design paper.

Stamp the flowers and leaves and cut out.

Stamp the text onto the white oval.

Fold and glue the box together. Adhere the oval in the centre and decorate with flowers and leaves. Adhere the oval with text with foam pads.

Inkpads Memento: angel pink, rose bud, pear tart, new sprout



#### Extra needed for this box:

Collectables: COL1443 (Birds & Hearts), Craftables: CR1360 (Basic shapes with stitches-Circle), CR1386 (Pillow box), Clear stamps Karin Joan: KJ1721 (Gefeliciteerd/ Congratulations), KJ1722

Die cut the box, labels and a circle from design paper. Die cut a second circle from white card and hearts from black and silver. Stamp the label, flowers and leaves and cut out.

Fold and glue the box together. Layer the circles together and then onto the box.

Adhere the hearts and labels and then the leaves and flowers using foam pads.

(Floralia), Inkpads Memento: angel pink, rose bud, pear tart, new sprout, Design paper pads: PK9147 (Aqua color), PK9149 (Do what you love), Card: black, Decoration paper: CA3127 (silver)