

The Collection #66



By Tineke van der Linden

www.tinekeskaartenhoekje.blogspot.nl

Materials used for both cards:

Craftables: CR1279 (Tiny's Ocean set), CR1440 (Sea shells), Creatables: LR0470 (Anja's Frilly square-twig used), LR0532 (Nautical set), LR0534 (Compass), LR0535 (Wooden signpost), Die cut and embossing machine, Clear stamp: CS1007 (Beach sentiments), Distress ink: vintage photo, pumice stone, rusty hinge, Inkpad: Versafine onyx black, Decoupage sheet: EWK1258 (Sea breeze), Design paper bloc: PK9156 (Sea breeze), Papicolor card: Original pearly white (930), Christmas red (943), baby blue (956), army green (954) and night blue (941), Recycled kraft grey (322) and brown (323), Metallic gold (338), Paper distresser

Tip for mirroring the seagulls:

Die cut the seagull on the reverse side of the card. Remove the card from the die and place onto the other, smooth side of the die. Fix with non-permanent craft tape and emboss as you normally would, but now with the cutting edges on the other side.



Extra needed for this card:

Craftables: CR1405 (Nautical rope), CR1410 (Tiny's Lighthouse), CR1441 (Dune fence), CR1442 (Wave), Creatables: LR0417 (Porthole), Distress ink: faded jeans, picket fence, Papicolor card: dark brown (938), iris blue (931), Recycled kraft black

(324), Enamel dots: PL4501 (blue & grey), Inka gold silver

Cut a 27 x 15 cm iris blue strip and score folds at 15, 18, 21 and 24 cm. Cut a 16 x 15 cm iris blue rectangle and score a fold at 1 cm in from the long side and adhere the small strip at the reverse side of the first card creating a top-fold card.

Cut pearly white card into a 14.5 x 14.5 cm square and a 14.5 x 2.5 cm strip and design paper into a 14 x 14 cm square and a 14 x 2 cm strip. Die cut the compass from gold and layer night blue paper behind. Die cut the life buoy from pearly white and Christmas red card and mount the picture on top. Die cut the lighthouse from Christmas red, the steering wheel from dark brown and the mooring post from brown kraft. Die cut the waves 2x from night blue and 1x from baby blue card and adhere overlapping to the fold in the back. Die cut the dune fence from dark brown, the star fish from brown kraft, the shells from pearly white and metallic gold, the twig from army green, the rope from grey kraft, the anchor from black and three seagulls from pearly white. Work the seagulls with distress ink pumice stone and rusty hinge, the white shell with faded jeans, the star fish, mooring post and the rope with vintage photo and the lighthouse, steering wheel and dune fence with picket fence. Work the anchor with inka gold silver. Stamp a text onto the life buoy and finish off the card with enamel dots.



Extra needed for this card:

Craftables: CR1409 (Tiny's Fishing net), Creatables: LR0533 (Hurricane lamp), Design folder: DF3448 (Sea shells)

Cut a 15 x 15 cm night blue top-fold card.

Cut 14.5 x 14.5 cm design paper and work the edges with a paper distresser.

Cut 14 x 14 cm pearly white card and emboss sea shells.

Die cut the fishing net from recycled kraft, the life buoy from pearly white and night blue card and layer the picture behind. Die cut the compass from metallic gold and adhere to Christmas red paper. Die cut the hurricane lamp from Christmas red, the sign post from grey kraft, the star fish from brown kraft, the shells from baby blue and pearly white.

Die cut the twig from army green and the seagull from pearly white. Work the seagull with distress ink pumice stone and rusty hinge, the white shells with pumice stone and the star fish with vintage photo.

Stamp the texts onto the sign post.

By Jeannette Bron

Materials used for both cards:

Die cut and embossing machine, Clear stamps: CS1007 (Beach-texts), Inkpad: black, Design paper bloc: PK9156 (Sea breeze), Pens: black and orange



PL4501 (blue and grey)

Extra needed for this card:

Creatables: LR0535 (Wooden signpost), Craftables: CR1279 (Ocean set), CR1360 (Basic shapes with stitches-Circle), CR1402 (Bendy card), CR1441 (Dune fence), Clear stamps: CS0970 (Shells), Distress ink: vintage photo, Decoupage sheet: EWK1258, Enamel dots:

Cut 14 x 14 cm kraft card, 13.5 x 13.5 cm white card and 13 x 13 cm design paper.

Die cut and emboss all figures and highlight the embossed parts with distress ink. Colour in the legs and bill of the seagull with an orange pen and the eye with a black one.

Stamp the background onto the design paper.

Cut off 1 cm at the bottom of the two flaps of the Bendy card.

Copy the inside of this die onto white card and design paper. Cut out, cut the flaps of design paper a little smaller than the white ones.

Die cut a ring from kraft by using the two largest sizes of the dies at the same time. Layer the picture behind.

Stamp the texts onto the sign post and adhere all layers to the card.



Extra needed for this card:

Creatables: LR0532 (Nautical set), LR0533 (Hurricane lamp), Craftables: CR1279 (Tiny's Ocean set), CR1440 (Sea shells), Clear stamp: CS0969 (Sand), Card: red and kraft, Rope

Cut a 14.5 x 14.5 cm red single-fold card, 12.5 x 12.5 cm red card and 13.5 x 13.5 cm and 12 x 12 cm design paper.

Stamp the background onto 14 x 14 cm kraft. Die cut and emboss all figures.

Stamp the texts on the lifebuoy and sand.

Colour in the legs and bill of the seagull with an orange pen and the eye with a black one.

Tie the hurricane lamp to the lifebuoy with a piece of rope.

Adhere all layers to the card.

By Marleen van der Most
handmadebymarleen.blogspot.com

Materials used for all cards:

Craftables: PL6501 (ATC Pocket Letter-stencil), Die cut and embossing machine, Clear stamps: EC0172 (Eline's Kittens), Inkpad: Memento tuxedo black, Design paper pad: PK9153 (Sweet Romance), Papicolor card: pearly white (930), Vellum, Diamond gems: JU0937 (light pink & pink), Thin jute rope



Extra needed for this pocket letter:

Collectables: COL1431 (Eline's Tropical Fish), COL1454 (Eline's Kittens), Craftables: CR1368 (Punch die-Cats & Dogs), Creatables: LR0519 (Easter Bunny with Bow-bow used), LR0520 (Basket), Design folder: DF3411 (Paws), Papicolor card: Recycled kraft black (324), Original: raven black (901), carnation white

(903), heather 9922), light pink (923), nut brown (939), mango (940), mouse grey (944), mocha (953), grey (958), taupe (961), Decoration paper: CA3126 (gold), Small bell, Circular template 1.5 cm Ø, Light pink coloured pencil, Maritime rope: JU0949, Pink knitting yarn, White gel pen

General instructions:

Use the ATC-pocket letter stencil to die cut cards in both sizes from plain card and design paper. Put them aside two by two. Die cut kitties in coordinating colours, assemble, but do not adhere them to the cards yet. Highlight the kitties' cheeks with a light pink coloured pencil and draw a white sparkle in the eyes and on the noses.

The cards can be finished off with diamond gems.

Card 1: Emboss paws onto the white card. Cut/tear a 6.4 x approx. 1.5 cm light pink strip. Die cut the fish from mat gold paper.

Card 2: Adhere the cards together and stamp texts and a paw print. Cut/tear a 6.4 x approx. 4 cm light pink strip.

Card 3: Adhere the cards together and stamp a text. Cut/tear a 6.4 x approx. 2 cm strip from design paper.

Card 4: Adhere the cards together. Cut an 8.8 x 3.5 cm strip from vellum and an 8.8 x ca. 2.5 cm strip from design paper. Adhere to the card. Stamp a text.



Flat-backed adhesive stones: orange/gold

Extra needed for this card:

Collectables: COL1388 (Photo frames), COL1398 (Banners XL), COL1444 (Rosettes & labels)
 Design folder: DF3413 (Border-Hearts), DF3447 (Polka dots), Illustrator Markers by Spectrum Noir: AP1 pink lace, AP3 vintage pink, MB1 muted brown, PP1 blossom, RB1 pecan, Pearls: CA3133 (off-white), Lace, Marker Paper,

Card 5: Adhere the cards together. Die cut a basket from design paper and a bow from light pink card.

Card 6: Adhere the cards together. Cut an 8.8 x 3.5 cm strip from vellum. Cut 3.4 x 2.2 cm design paper and stamp a text. Die cut a grey mouse using a punch die.

Card 7: Adhere the cards together. Cut/tear a 4 x 1.5 cm strip from design paper and stamp a text.

Card 8: Adhere the cards together and stamp a text. Cut/tear an 8.8 x a 1.5 cm strip from design paper. Die cut a grey mouse using a punch die.

Card 9: Emboss paws onto the white card. Cut/tear a 6.4 x ca. 4.5 cm strip from design paper.

Die cut a 1.5 cm Ø circle and wrap knitting yarn around it to make a ball of wool for the kitty.

Finally adhere the kitties to the cards en put the card into the pockets. Finish off the pocketletter by threading ribbon through the holes and decorate with a bow of rope with a small bell.

Cut a 15 x 10.5 cm white single-fold card. Cut/tear 10.5 x 4.5 cm design paper and adhere with lace partially behind.

Die cut the banner from vellum and the border with hearts from design paper.

Die cut a pink rectangle, use the largest one and emboss the polka dots. Die cut a white photo frame.

Adhere the layers to the card.

Die cut the rosette from design paper and adhere using 3D-tape. Glue a bow made of rope behind it. Adhere a pearly white circle. Stamp the kitty onto plain card, with the spots stamped onto it separately.

Then stamp the kitty onto marker paper (this time without the spots).

Place the marker paper onto the stamped cat with spots and place both onto a light box (or hold against the window). The spots will now show through the paper, trace them with markers in your chosen colours. Colour in the cat, cut out and adhere to the rosette.

Finish off the card with a text and various adhesive stones.

By Anja Zom

anjazomkaartenblog.blogspot.nl

Materials used for all cards:

Design folder: DF3447 (Polka dots), Die cut and embossing machine, Clear stamps Mixed Media: MM1620 (Text), Inkpad: black, Design paper: PK9153 (Sweet Romance), Papicolor card: pearly white (930), Adhesive flat-backed pearls: CA3132 (white)



Extra needed for this card:

Collectables: COL1453 (Ladies suit), COL1445 (Eline's Craft Dates), Clear stamps: PL1502 (Border Dots), Inkpad: Versamark transparent, Embossing powder: white, Papicolor card: Recycled kraft grey (322), Mirror paper: CA3135, Lace, Thread, Heat

Cut 13 x 13 cm design paper and stamp a flower border at 0.5 cm in on the left and right-hand side, using a transparent Versamark inkpad. Sprinkle white embossing powder on top and work with a heat tool. Then adhere to a 13.5 x 13.5 cm white single-fold card. Cut an 8 x 13 cm white strip, layer lace behind the long sides and adhere to 7.5 x 13 cm design paper.

Emboss polka dots onto a 7 x 13 cm white strip and mount on top. Adorn with a bow. Die cut/emboss two ladies suits, two reels, scissors and 3x the smallest zigzag rectangle.

Assemble the ladies suits, stamp a text, and wrap thread around the reels. Finish off the card.

tool



Extra needed for this card:
 Collectables: COL1452 (Dress),
 Craftables: CR1432 (Herbs &
 Leaves), Papicolor card: silver
 grey (902)

Cut a 13.5 x 13.5 cm white single-fold card and mount 13 x 13 cm design paper on top.
 Emboss the polka dots onto an 8.5 x 13.5 cm rectangle. Adhere white lace along the sides and bow of ribbon.
 Die cut and emboss the parts of the dress, pleat the skirt and assemble.
 Stamp the text on a white scrap, cut into a banner and mat on design paper.
 Die cut two green twigs and adhere to the card with flowers and the text banner.



Extra needed for this card:
 Collectables: COL1452 (Dress),
 Feather: white

Cut a 13.5 x 13.5 cm white single-fold card and mount 12.5 x 12.5 cm design paper on top.
 Emboss polka dots onto an 11.5 x 11.5 cm white square and reel ribbon around it.
 Die cut the skirt, the belt and upper part of the dress. Pleat the skirt and assemble the dress.
 Add a small flat-backed pearl to the bow and position the dress and feather on the card.
 Stamp a text onto a card scrap and mat on design paper.
 Finish off the card.

By Henriette Geurkink
design-54.blogspot.nl



Materials used for the gift packaging:
 Water colour paper 300 gms:
 A3-sheet, Acryl paint: pink, yellow, apple green, blue-green, orange, white, Craft sheet, Brayer, Mask stencils Tiny: PS8001 (Cobble stones), PS8002 (Faded corduroy), PS8003 (Bark), Motif stamps Henriette: MM1621, MM1622, Text stamps Henriette: MM1620, Texture stamps Tiny: MM1603 (Netting), MM1604 (Grid), MM1606 (Circles), MM1608 (Dots), Clear stamps Power Pink Dutch: PP2801 (for the label), Ink pad: Stazon jet black, Hole punch, Thin brush or water brush pen, Micron black pens: 0.1 – 0.5 – 0.8, Sharpie-pen: white, Rope or

Making a background on the A3-sheet of watercolour paper:
 Put a small blob of all the colours you like to use on a craft sheet and spread them out over the watercolour paper using your fingers. Leave white spots too.

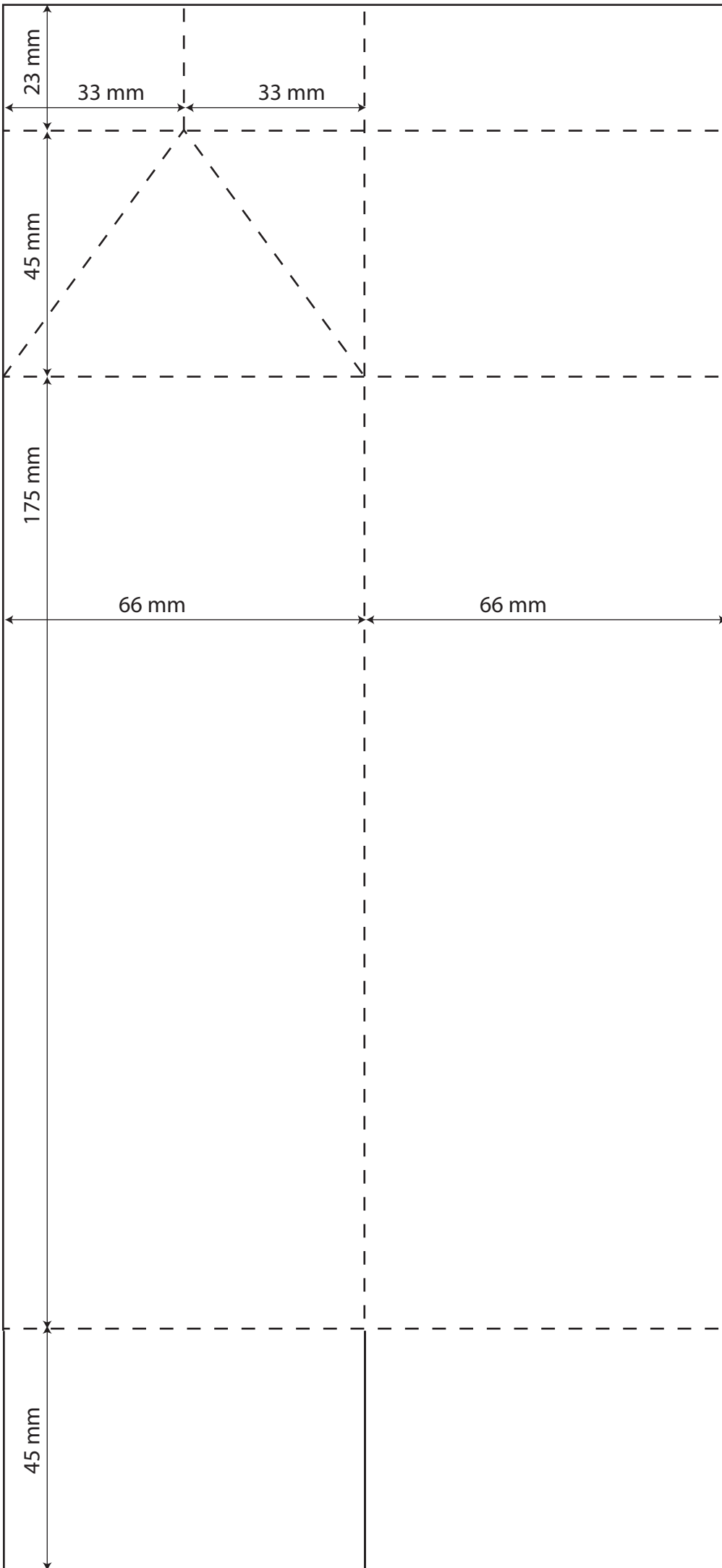
Stamp textures in the colours of your choice: apply ink to the craft sheet and spread it out with a brayer.
 Press the stamp in the right paint colour and stamp on the background.
 The drawings show which parts of the packaging will be most prominent after cutting out.
 Take this into account when making the background.

Using the Stazon inkpad stamp a few circles onto the background nicely divided over the background.
 Repeat this with the motif stamps.
 Colour in the circle flowers (small and large) with a white Sharpie pen and colour them in with paint.
 When you are happy with the result set the paper aside to dry.

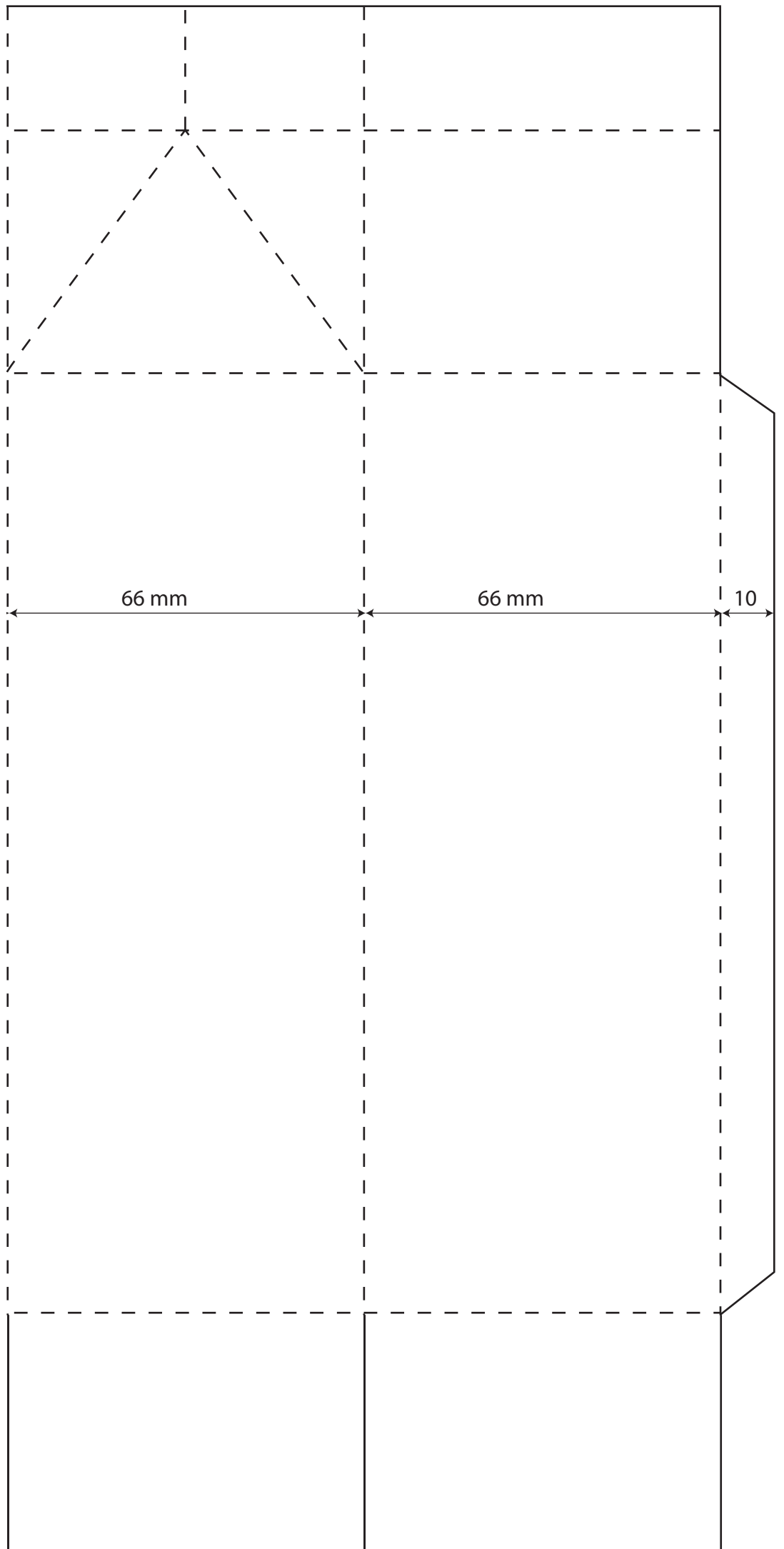
Trace the drawing onto the background of the paper and cut out.

Fold all lines and adhere the sides and bottom well.
 Make crisp folds in the top. Punch two holes in the top and thread a rope with label through.
 The label:
 Make a background on a scrap of water colour paper. Stamp motifs and a text. Punch a hole.

ribbon, Paint sponges



Place the two patterns next to each other to create the box pattern.



Materials used for the cards:

Water colour paper: 300 gms, Craft sheet, Brayer, Thin brush or water brush pen, Paint sponges, Text stamps Henriette: MM1620, Motif stamps Henriette: MM1621, MM1622, Butterfly stamps Tiny: MM1613 (Butterfly 1-rounded wings), MM1614 (Butterfly 2-pointed wings), Inkpad: Stazon jet black, Enamel dots: PL4513 (baby blue), PL4502 (green & orange), Flat-backed adhesive pearls: CA3132 (white), Micron black pens: 0.3 and 0.5, Sharpie-pen: white

General instructions for the cards:

Making a background onto 10.5 x 14.5 cm water colour paper:

Put small blobs of orange, yellow and pink paint onto a craft sheet and use a brayer to spread it out over the background. Use all three colours, but leave white spots too.

Alternative: use pretty design paper.

Use glue to adhere the second, colourful butterfly to the one stamped on the card.



Extra needed for this card:

Card: yellow

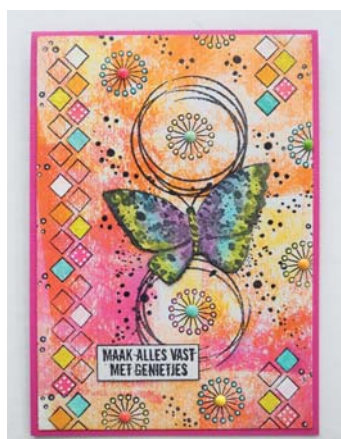
Make the background. Stamp the lines in the centre and the butterfly on top. Stamp the same butterfly also on watercolour paper, colour in and cut out.

Stamp the blocks and triangles onto the background. Then stamp the stars and spirals.

First colour in the blocks and triangles with a white Sharpie-pen, and then with paint.

Place dots around the stars with a white Sharpie-pen, do the same in the black blocks.

Adhere all parts onto a 10.5 x 15 cm yellow single-fold card and finish off by adding a flat-backed pearl to the spirals.



Extra needed for this card:

Card: cyclamen pink, Texture stamps: MM1623 (Circles) and MM1624 (Lines), Clear stamps Karin Joan: KJ1704 (dots, etc.)

Make a background. Stamp the butterfly in the centre with the one but largest circle above and below.

Stamp the diamonds as per example along the sides.

Stamp the circle flowers randomly over the background and colour them in with a white Sharpie-pen. Stamp black dots around them. Stamp a text onto a scrap of water colour paper and draw a frame with a black pen. Cut out.

Stamp the butterfly onto a scrap of watercolour paper, colour in with paint, ink or coloured pencils.

Adhere all layers to the background and then to a 10.5 x 14.5 cm pink single-fold card.

Finish off by placing an enamel dot in the hearts of the flowers.



Extra needed for this card:

Card, Texture stamps: MM1623 (Circles) and MM1624 (Lines)

Make a background. Stamp a circle in the centre. Stamp a butterfly in the circle and stamp the same one onto a scrap of watercolour paper. Decorate the card with divers motif stamps. Stamp a text onto a scrap of water colour paper and draw an outline with a black pen. Cut out.

The top left and bottom right circles have been stamped on design paper and cut out.

Colour in the butterfly with paint, ink or coloured pencils.

Cut out and adhere to the butterfly stamped on the card.

Adhere the layers onto a 10.5 x 15 cm orange single-fold card.

Complete the card with enamel dots in the hearts of the flowers.



don't let
clouds
cover your
RAINBOW