

The Collection #74



By Sigrid Klingenberg
sigridklingenberg.blogspot.nl

Materials used for both cards:

Clear stamps: CS1018 (Dream Sentiments), CS1021 (Forest Animals), Stamp master: LR0009, MM brayer: LR0019, Ink pad: black, Stamping paper: white, Papicolor card Original: pearly white (930), Copy paper scrap paper or mask paper, stamping aid

General instructions:

Apply the different distress ink colours by pressing the ink pad 3x in a straight line onto the craft plate. That will be enough to stamp the image. Use the brayer and roll in one direction to spread out the ink evenly. Place a mask onto the craft plate and gently roll the brayer over it a few times. Remove the mask and make an imprint onto the stamping paper.

Tip:

Secure the stamping paper well when using a stamp aid. Should you not want the imprints to go beyond the outline of the craft plate, then cover the edges of the first imprint with copy paper or scrap paper.



green (947)

Extra needed for this card:

Clear stamps: CS1020 (Fairytale), MM craft plate: LR00016 (Circle 10 cm Ø), Mask stencil: PS8124 (Clouds & Sunburst), Distress ink: worn lipstick, dried marigold, mustard seed, shabby shutters, stormy sky, Papicolor card Original: blossom (943), spring

Cut a 12 x 12 cm square from white stamping paper. Apply distress ink onto the craft plate and make an imprint onto stamping
Stick copy paper, scrap paper around the imprint and place a mask on top. Colour in the sun with different colours of distress ink.
Stamp the plants, road, castle, horse and text in black ink. Use a torn piece of paper to create a landscape with distress ink shabby shutters.
Adhere the card to 12.5 x 12.5 cm light green, 13 x 13 cm blossom and a 14 x 14 cm pearly white single-fold card.



Extra needed for this card:

Clear stamps: CS1017 (Fairies & Butterflies), MM craft plate: LR0017 (Square 10 x 10 cm), Mask stencils: PS8025 (Tree), PS8026 (Flower petals), Distress ink: salty ocean, evergreen bough, twisted citron, Card: light blue, may green

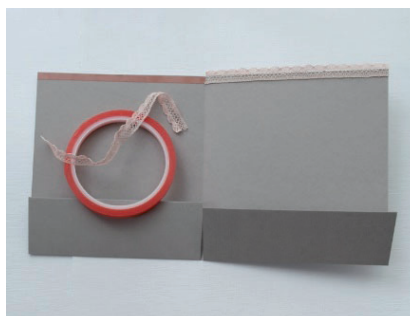
Cut a 12.5 x 12.5 cm square from white stamping paper. Apply distress ink onto the craft plate and use a mask. Make an imprint onto the stamping paper.
Stick copy paper, scrap paper or mask paper around the stamped image. Place the tree on top and colour in the areas around the edges of the mask a little darker.
Stamp the tree, grass, animals and text in black ink.
Adhere the card to 13 x 13 cm light blue, 13.5 x 13.5 cm may green and then onto a 14.5 x 14.5 cm pearly white single-fold card.

General instructions:

The measurements in cm are being indicated like his: first you will see the height and then the width. So if you see 10 x 5 cm, this means 10 cm high and 5 cm wide. Lace is adhered with double-sided tape. Creatables LR0578 consist of six separate dies: three for the frame and three for the bouquet. Tip: Die cut the frame from different colours. Keep the large circle that falls from the frame after die cutting. Die cut pictures from the decoupage sheet with the small separate cutting die and adhere them to the large circle.

Materials:

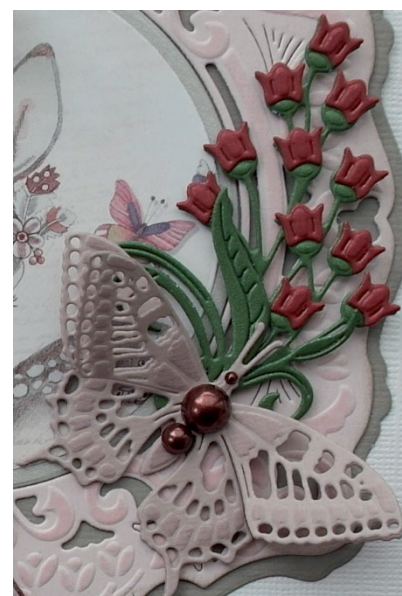
Creatables: LR0509 (Tiny's Butterflies), LR0578 (Petra's Amazing Circle), Distress ink: milled lavender, pumice stone, spun sugar, Decoupage sheet: EWK1267 (Butterfly Dreams), Pretty Papers design paper-pad: PK9160 (Romantic Dreams), Papicolor card: Original: heather (922), light pink (923), blossom (934), taupe (961) and Metallic: botanic (336), red lacquer (337), Vellum: white, Buttons Dress It Up: Heritage hearts 2734, Enamel dots: PL4514 (dew drops), Lace: VV1008 Broderie 38 mm old pink, Ribbon: LB1001 satin-/organza apricot, CG1008 satin taupe 10 mm, Shiny pearls: red D110



1. Folding the card: Take a taupe A4-sheet. Fold in half and open up again. Score (whole width) at 5 cm up from the bottom. Make a 5 cm incision into the fold starting at the bottom. Fold the flaps inside. Do not adhere them yet. Adhere lace along the top, see photo on the left. Cut 2x heather 14 x 14.7 cm, 2x salmon design 10.5 x 14.7 and for the flaps 2x pink design paper 4.6 x 14.4 cm. Adhere the salmon design paper (3 mm frame border at the top) onto heather. Adhere together as per example. Finish off the bottom with salmon design paper and ribbon (LB1001). Fold the flaps on top and adhere on both sides. Leave the centre open. Turn the card (see photo on the right). The fold will now be on top with the flaps on the right-hand side.



2. Card front: *Photo on the left:* Cut blossom design 14.3 x 15.4 cm, salmon design 13.9 x 14.8 cm (stick salmon to blossom), light pink 14.3 x 8 cm and pink butterfly design 13.9 x 7.5 cm (stick pink butterfly to light pink). Adhere the pink lace and ribbon in the centre horizontally. Adhere the whole to the card front. *Photo on the right:* Die cut/emboss the outer line (LR0578) from taupe and the decorative border from platinum and light pink. Use the large platinum circle that fell from the frame. Die cut the picture from the decoupage sheet, using the small circle and adhere to the platinum circle. Work the light pink frame with distress ink spun sugar. Then adhere to taupe. Adhere the platinum circle with the picture in the centre.



Die cut/emboss two bouquets: the leaves and stems from botanic and the separate flowers from red lacquer. Assemble the bouquets and set aside to dry. Die cut/emboss the butterfly 2x from vellum and 2x from heather. Adhere the body and lower wings together, but don't glue the top wings, shape them.

By Anja Zom
anjazomkaartenblog.blogspot.nl



Materials:
Craftables: CR1460 (Punch die-Sweethearts), CR1461 (Nest die-Hearts M), Creatables: LR0577 (Flower frame-Square), LR0582 (Pins, numbers 0-9), Die cut and embossing machine, Clear stamps: CS0998 (Wedding Sentiments-Dutch), Ink pad: black, Pretty

Papers design paper pad: PK9160 (Romantic Dreams), Papicolor card: Original moss green (951), Metallic pearly white (330), Decoration paper: CA3127 (silver), Rope, Tulle

Cut a 15 x 15 cm single-fold white metallic card and mount 14.5 x 14.5 cm design paper on top.
Die cut the flower frame from white metallic too and the outermost square frame from design paper. Adhere together and then onto a 13 x 13 cm white metallic square.
Die cut the picture with the middle square cutting die and adhere on top of the flower frame.
Die cut a few hearts from white metallic and stamp a text onto the large heart.
Die cut the numbers, a few flowers and leaves and motifs from the punch die and adhere as per example.
Complete the card with a pretty bow of tulle and rope.

By Rimmie van de Sande
butterflykisses83.blogspot.com

Materials used for both cards:

Craftables: CR1459 (Punch die-Clouds), Creatables: LR0579 (Fairy Flower House), Die cut and embossing machine, Clear stamps: CS1018 (Dream), Distress ink: bundled sage, scattered straw, victorian velvet, walnut stain, Ink pad: Versafine onyx black, Pretty Papers design paper pad: PK9157 (Soft Pastels), Card: white, green, yellow, pink, brown



Extra needed for this card:
Craftables: CR1374 (Box cards, twig, leaves and flowers used), CR1444 (Basic shapes-Hexagons), Creatables: LR0360 (Grass), LR0580 (Fairy House)

Cut a 13.5 x 13.5 cm white top-fold card and mount 13 x 13 cm pink card and 12.5 x 12.5 cm pink design paper on top.
Die cut a large and small hexagon from design paper and a large and small frame from white card.
Die cut the parts needed from different card colours.
Work the fairy houses with distress ink victorian velvet and walnut stain. Layer yellow card behind the windows.
Colour in the fairies with your favourite colour medium.
Cut a 1.8 x 5 cm white strip and stamp a text in black ink.
Finish off as shown.



Extra needed for this card:
Craftables: CR1331 (Basic shapes-Circles), CR1355 (Grass Border), CR1455 (Punch die-Fairies), Creatables: LR0530 (Royal Frame), Decoration paper: CA3126 (gold)

Die cut the royal frame 2x from pink design paper, fold one of them in half. Work the border of the other frame with distress ink victorian velvet. Die cut the decorative border from white card and the circle from design paper. Die cut two grass borders from green card and work the grass-stalks with distress ink bundled sage. Adhere the strips overlapping and cut off excess paper along the border of the card. Die cut the parts needed from different card colours. Layer yellow card behind the windows of the fairy house. Colour in the fairy with your favourite colour medium.
Cut a 2 x 5 cm pink strip and stamp a text in black ink.
Adhere the lower part of the card to the folded frame to make the card stand up straight. Finish off as shown.

Materials used for all cards:

Clear stamp: CS1019, Watercolour/stamping papier, Ink pad: black, Markers



Extra needed for this card:

Clear stamp: TC0872 (Tiny's Bouquet Border), Collectables: COL1444 (Rosettes and Labels), Enamel stickers: PL4503 (black and white), Distress ink, Papicolor card Original: purple (946), spring green (952), Gel pen: white, Thin black jute rope

Cut a 10.5 x 15 cm purple top-fold card and mount 10 x 15 cm green card on top. Make a background on water colour/stamping paper using distress ink and sprinkle droplets of water onto it. Stamp the flowers and place white accents with a gel pen. Wrap black rope around the side of the card. Die cut a label from pearly white and purple card and stamp a text in black ink. Adhere overlapping and cut to size. Complete the card with an enamel sticker.



Extra needed for this card:

Clear stamp: TC0871 (Tiny's Border-Hydrangea), Collectables: COL1441 (Pins and Bows), Die cut and embossing machine, Decoration paper: CA3126 (gold), Papicolor card Original: spring green (952),

raven black (901), Acrylic paint: gold, Ecoline markers, Enamel stickers: PL4510 (gold and silver)

Cut a 10.5 x 14.5 cm green top-fold card and mount 10 x 14 cm black card on top. Make a background onto 9.5 x 13.5 cm watercolour/stamping paper using Ecoline brush pens. Apply various colours, in any way you like, onto a plastic folder/cellophane bag or a craft sheet. Sprinkle water droplets onto the card with a brush or a spray bottle. Place the card on top, face down. Press it onto the ink and carefully remove it. Set aside to dry. Make splashes with gold-coloured acrylic paint. Stamp a text in black ink. Stamp the hydrangea border and colour in with markers. Cut the card into: 3.5 x 13.5 cm and 5.5 x 13.5 cm. sopy paperDie cut two gold-coloured bows and adhere together with an enamel sticker in the centre.



Extra needed for this card:

Clear stamps: TC0870 (Tiny's Border-Butterflies), TC0863 (Tiny's Border-Meadow), Mask stencil: PS8124 (Clouds and Sunburst), Distress ink, Papicolor card Original: mustard yellow (948), petrol (962),

Mask paper, Memento markers

Cut a 10.5 x 15 cm mustard yellow top-fold card and mount 10 x 14.5 cm petrol card on top. Cut 9.5 x 14 cm watercolour/stamping paper. Draw a border of clouds onto mask paper and cut out. The cut off part will also be used. Adhere the mask of the border of clouds onto the watercolour paper and place the stencil on top, with the sun visible at the bottom (see photo). Work with distress ink. Use the cut off part of the border of clouds, place it upside down onto the background and now work upwards. Replace it to create more clouds. Work the lower half of the card with distress ink. Stamp part of the border and colour in with Memento markers. Stamp the butterfly border and colour in. Stamp a butterfly onto a paper circle and work with blue distress ink. Stick a petrol-coloured circle behind and tie together with jute rope. Complete the card with a text.

By Marleen van der Most
handmadebymarleen.blogspot.com

Materials used for all cards:

Clear stamps: CS0987 (Congratulations-Dutch), Ink pad: VersaMark transparent, Papicolor card: Recycled kraft grey (322), light pink (923), Pretty Papers design paper bloc: PB7054 (Crafty Patterns), Mirror paper: CA3135 (silver)



Extra needed for the cake wedges:

Collectables: COL1444 (Rosettes & Labels), Craftables: CR1352 (Basic shapes-Labels), CR1462 (Cake wedge and roll-up Roses), Creatables: LR0566

(Dinner set-fork used), Embossing powder: clear (Papermania), Papicolor card Original: bright pink (915), Brads 3x, Thin jute rope, Tissue paper

Die cut the base for the cake wedges 3x from kraft and assemble the 'boxes'. Die cut three lids from design paper. Adhere the tips and when dried well adhere them to the ends of the boxes. Die cut the small circle (COL1444) from eight layers of tissue paper, secure with a brad and curl to create a cup shape. Finish off the cake wedges with a label and text, bow of jute rope, fork and bright pink flowers.



Extra needed for this card:

Collectables: COL1323 (Flower set), Craftables: CR1462 (Cake wedge and roll-up Roses, leaves used), Creatables: LR0341 (Mini-cake & Cupcake), LR0566 (Dinner set-fork, used), LR0581 (Banners),

LR0582 (Pins-Numbers 0-9), Embossing powder: Stampendous white EP100, Papicolor card Original: sea green (917), pearly white (930), Pretty Papers design paper pad: PK9127 (Watercolour), Snow paper: CA3104, Vellum (layer for the flowers), Brads 3x, thin jute rope, Tissue paper

Cut 15 x 10.5 cm kraft for the single-fold card and 14.5 x 10 cm light pink card, 14 x 9.5 cm light pink design paper, 12 x 8 cm mint green design paper and 11 x 7 cm pink design paper. Adhere the layers together.

Die cut the cupcake and garland and adhere to the card. Die cut the number pins from silver and place behind the cupcake. Complete the card with a text, flowers and a fork.



Extra needed for this card:

Collectables: COL1323 (Flower set), COL1443 (Giftwrapping-Karin's Bird, Hearts & Tag), Craftables: CR1462 (Cake wedge and roll up Roses, leaves used), Creatables: LR0582 (Pins-Numbers 0-9), Craft stencil by Marleen:

PS8123 (Present), Embossing powder: Stampendous white EP100, Papicolor card Original: sea green (917), pearly white (930), Pretty Papers design paper-pad: PK9127 (Watercolour-bottom layer of flowers), Snow paper: CA3104, Vellum (layer for the flowers), Thin jute rope

Trace the outermost lines of the present onto kraft. Trace the present 2x, 1x the normal way and 1x in mirror image. Cut out. Score a horizontal line on the mirrored box at approximately 3.5 cm from the top, fold over and adhere this small part to the reverse side of the card front. The card can now stand up straight. Use the innermost lines of the stencil to decorate the card front. Trace them onto the reverse side of design paper and/or card. Don't forget to turn the stencil over to avoid ending up with a mirrored shape. Adhere the layers onto the card front. Finish off with a bow, text and flowers.