

# The Collection #99



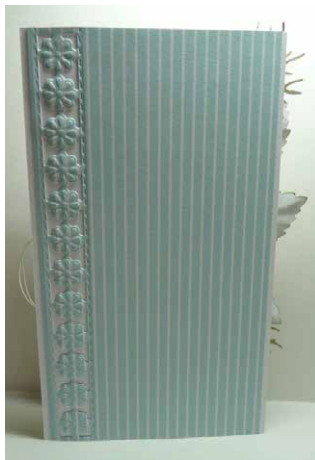
By Anja van Laar  
anjanlaar.blogspot.com

## Materials used for both cards:

Craftables: CR1539 (Punch die-Lucky, ladybug used), Creatables: LR0703 (Anja's Hydrangea), LR0693 (Anja's Circle-XS), Die cut and embossing machine, Text stamps: CS1022, Pretty Papers design paper A4-pad, double-sided: PK9174 (Springtime), Card: white, Finger dauber, Foam pad, Embossing tool

## General instruction flowers:

Die cut the flowers and leaves from white card. Work them with a finger dauber, or a small piece of a sponge, with ink. Spray with a little water and dab away the excess. Lay them on a foam pad and make "stripes" on the flowers, from the outside in, with an embossing tool. Set aside to dry. They will now be nice and sturdy.



Cut an 18 x 10.5 cm white blank card. Die cut and emboss the long border. Cut design paper to size and adhere next to it. Die cut the circle with waves together with the smallest circle from the plain-coloured side of the design paper. Emboss the border and adhere the picture behind. Die cut the largest circle again and layer behind to make the frame and picture sturdier. Adhere with foam tape.

Die cut the flowers and work them as described above.

Die cut and stamp the banner from plain-coloured design paper and white card, adhere partly overlapping and attach wax cord. Adhere together and then with foam tape to the card.

Back of card: cut 18 x 10 cm design paper, die cut and emboss the long border and adhere. Add golden yellow dots to the flower hearts and place the blue dots as per example given. Add a few ladybugs. Complete the flowers, leaves and bugs with a touch of glitter.

## Extra needed for this card:

Creatables: LR0537 (Anja's Long border), Stamping ink Memento Dew drops: MD-707 (bamboo leaves), MD-301 (rhubarb stalk), Stamps+dies set: CS1058 (Banners by Marleen), Decoupage sheet Mattie's Mooiste: MB0193, Nuvo crystal drops: 676N, 660N, Nuvo glitter gloss, Wax cord



## Extra needed for this card:

Creatables: LR0526 (Swirl), LR0692 (Anja's Square-XL), LR0693 (Anja's Circle-XS, twigs and smallest circles used), VersaMagic ink: GD-60 (tea leaves), GD-78 (Aegean blue), Nuvo crystal drops: 662N, Nuvo glitter gloss, Brads

Cut a 14 x 14 cm white blank card. Die cut and emboss the square from design paper and adhere.

Die cut and emboss the basket, attach the handles with brads.

Die cut the flowers and leaves and work them as described

above. Die cut the twigs, ladybug and swirl. Adhere to the basket with foam tape. Add a touch of glitter and put crystal drops in the hearts of the flowers.

Back of card: cut the square with dotted border from design paper, the largest circle from white card and the smallest one from the plain-coloured side of the design paper. Stamp a text.



**Extra needed for this card**  
**box**  
 Mica

Cut a 17 x 17 cm base and a 17.2 x 17.2 cm lid from white card. Score lines on both squares at 2 cm in from the edges (see drawing).

**Lid:**

Attach the smallest stencil of LR0692 with non-permanent tape in the centre of the scored lines. Die cut and emboss the open pattern.

Die cut and emboss the two larger stencils of LR0692 together from design paper to make the decorative frame.

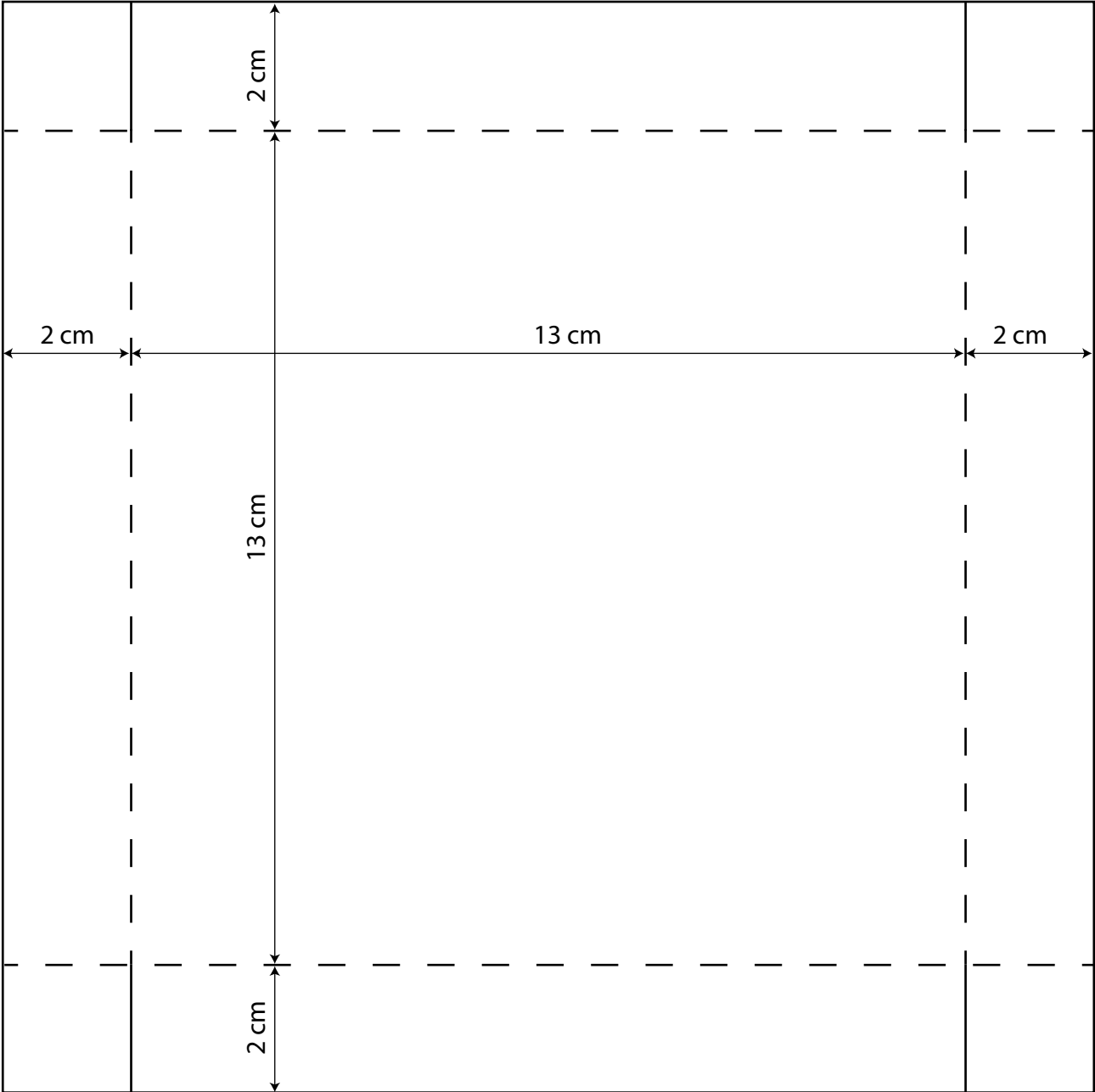
Cut out a semi-circle on one or two sides of the lid to make it easier to open it.

Adhere mica on the inside behind the open pattern.

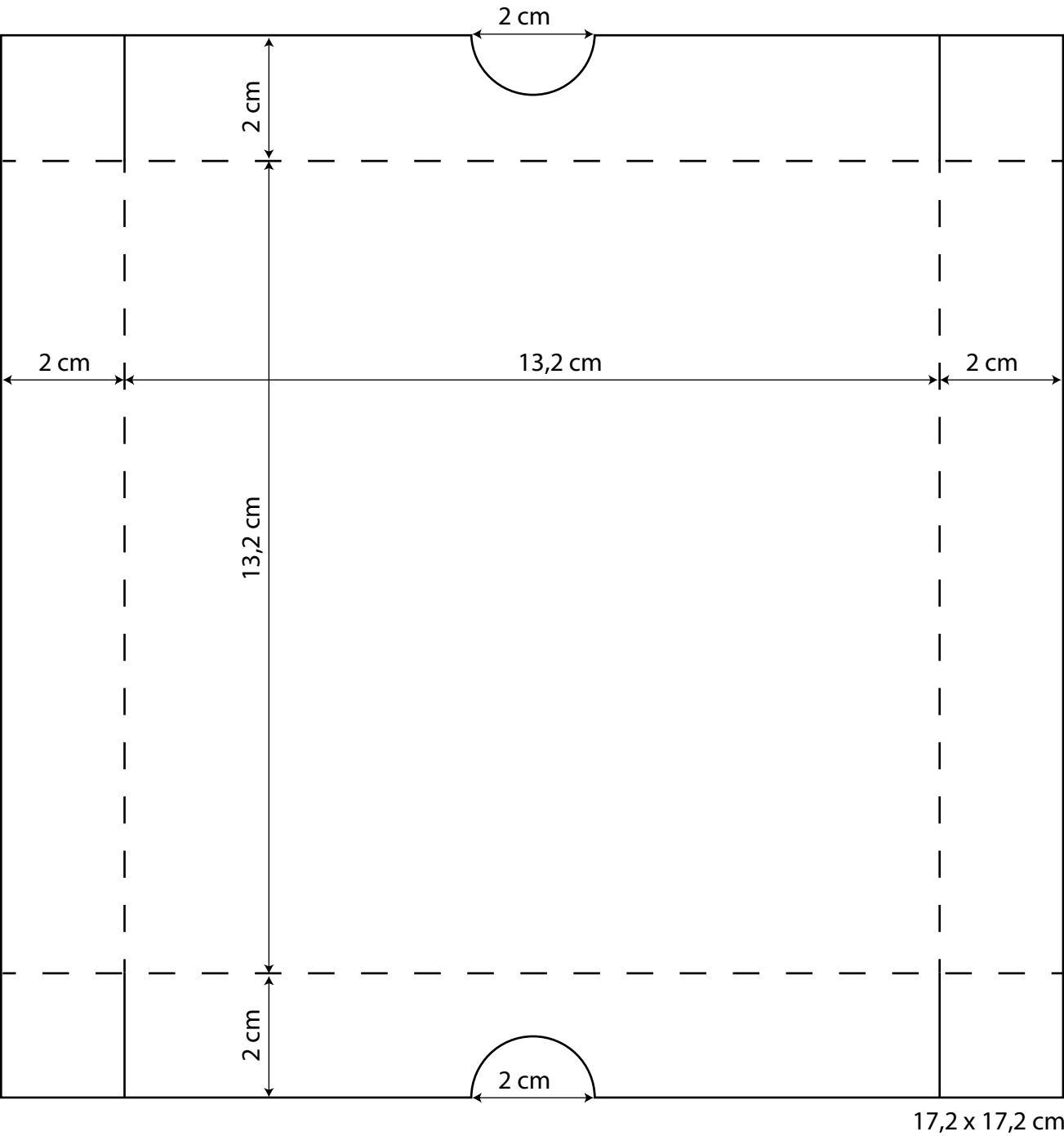
**Assembling:**

Make a 2 cm incision into four corners of the lid and base (see drawing). Fold the box and adhere the glue strips inside.

Base box Anja van Laar



17 x 17 cm



### General instructions:

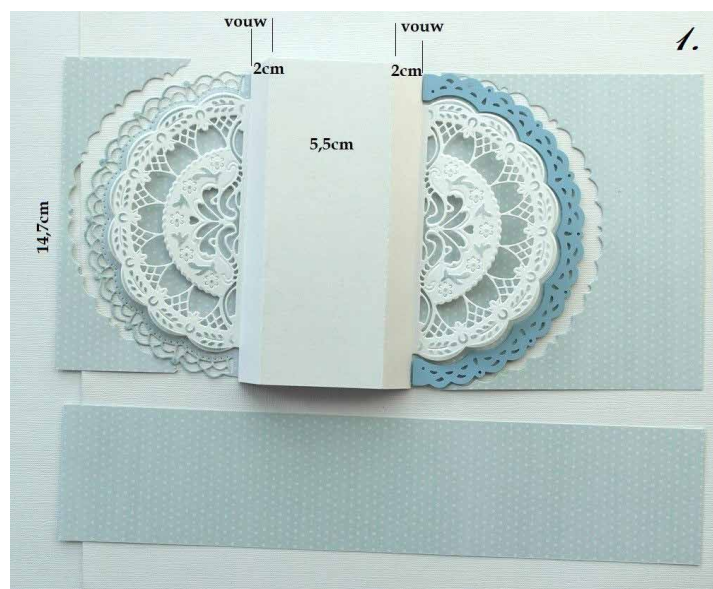
The measurements in cm are given like this: first you will read the height and then the width. So, if you see 10 x 5 cm, the paper is 10 cm high and 5 cm wide. Lace is attached with double-sided tape.



### Materials used:

Craftables: CR1539 (Punch die-Lucky), Creatables: LR0627 (Petra's Winter circle), LR0649 (Petra's Violets), LR0701 (Petra's Gate folding combination), Distress ink: dusty concord, weathered wood, Decoupage sheet

Mattie's Mooiste: MB0193 (Bouquets), Pretty Papers design paper A4-pad, double-sided: PK9174 (Springtime), Papicolor card Original: pearly white (930), for the violets: silver grey (902), aubergine (909), violet (920), mauve (937) and pine green (950), for the lady bug: raven black (901) and Christmas red (943), Metallic paper: CA3141 (light blue), Cadence water-based finger wax: apple green 6161 and pearl 6152, Ribbon



**1.** Take one pearly white A4-sheet and one sheet design paper from the pad (PK9174 Springtime). Cut off a 6.3 cm strip from both sheets. The two 14.7 cm high strips will be used for the card.

**A.** Lay the design paper down lengthwise and attach the outermost line of LR0701 (gate folding combination) with non-permanent tape. Die cut/emboss through the machine. Remove the die. Score a valley-fold at the bottom of the pattern, 2 cm further a mountain fold, 5.5 cm further a mountain-fold and 2 cm further another valley-fold. Lay the die (see photo) against the fold and die cut/emboss the other side.

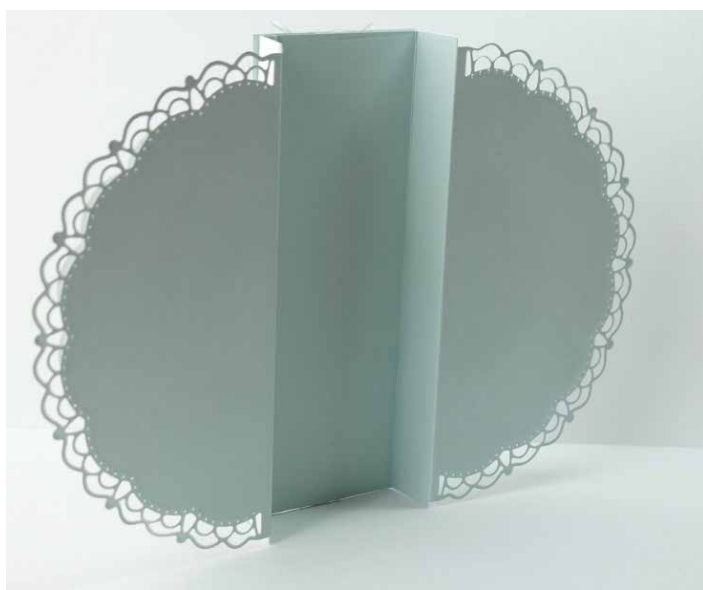
**B.** Lay down the pearly white strip lengthwise.

Attach the pearly white strip with non-permanent tape at the top in the centre of the inner edge/semi-circle (LR0701). Die cut/emboss through the machine. Remove the die from the paper. Score a valley-fold at the bottom of the pattern, 2 cm further a mountain fold, 5.5 cm further a mountain-fold and 2 cm further another valley-fold. Lay the die against the fold again and die cut/emboss through the machine. Adhere the pearly white parts (2 cm, 5.5 cm, 2 cm) to blue.

Cut a blue 14.7 x 14.7 cm strip from design paper for the centre. Adhere the ribbon, then adhere the strip to pearly white.

**2.** Attach the round border (LR0627-wintercircle) + inner ring with non-permanent tape to light blue metallic paper (CA3141). Die cut/emboss through the machine. The ring creates a circular opening in the centre. Adhere a picture behind.

Finishing the back of the circle: die cut/emboss the round border from pearly white and adhere behind the picture. Complete the card as per example given.



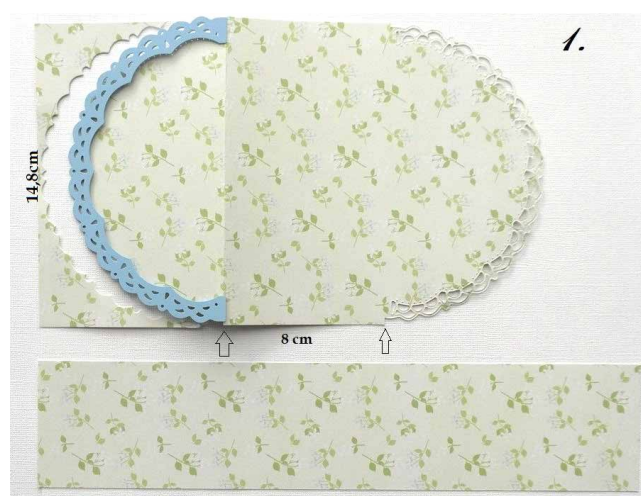




### Materials used:

Craftables: CR1529 (Fresh Flowers), CR1539 (Punch die-Lucky), Creatables: LR0627 (Petra's Winter circle), LR0701 (Petra's Gate folding combination), Distress ink: antique linen, weathered wood, chipped sapphire, Memento ink: pistachio, Decoupage sheet Mattie's Mooiste: MB0192 (Bouquets), Pretty Papers design paper A4-

pad, double-sided: PK9174 (Springtime), Papicolor card Original: carnation white (903), pearly white (930), Metallic: pearl white (330), ivory (331), for the ladybug raven black (901) and fiesta red (918), Organza ribbon: white, 5 mm



1. Take an A4-sheet of design paper from the pad (PK9174 Springtime). Cut off a strip 6.2 cm high. The remaining strip is 14.8 cm high; this will be used for the card. Lay the design paper down lengthwise and use non-permanent tape to attach the outermost edge of LR0701 (gate folding combination). Die cut/emboss through the machine. Remove the die. Score a fold at the bottom on the reverse side of the paper. Fold the design paper upwards as shown in photo 2. This will be the bottom of the card.
  2. Then lay the die onto the plain-coloured side of the design paper. Measure 8 cm from the fold and lay down the die as shown in the photo. Die cut/emboss through the machine.
  3. Cut pearly white card 17 cm high x 14.4 cm. Lay the paper down lengthwise and use non-permanent tape to attach the inner edge of LR0701 to the centre at the top. Die cut/emboss through the machine. Remove the die. Cut off the bottom of pearly white in a straight line at 7.8 cm measured from the bottom of the pattern. Cut 7.8 x 14.4 cm design paper and adhere to pearly white. Adhere this part to the inside of the card. Fold the bottom in shape (photo 2) and adhere using 3D-glue.
  4. Attach the round border (LR0627-winter circle) + inner ring with non-permanent tape to pearly white. Die cut/emboss through the machine. The ring creates a circular opening in the centre. Adhere the picture behind. Finishing the back of the circle: die cut/emboss the round border from carnation white and adhere behind the picture. Die cut/emboss the flowers from metallic pearl white and ivory. Work the flowers with ink and adhere with 3D-glue. Complete the bouquet with two bows.
- Tip:** Die cut Craftables CR1507 from design paper and adhere to the back of the card as a card stand.



By Sigrid Klingenberg  
sigridklingenberg.blogspot.nl

### General instructions:

Work the parts die cut from kraft card with distress ink gathered twigs.

**Tip:** Apply a little ink to the inside of the metal die before cutting and embossing. The parts that are lying deeper will be coloured now creating a shadow effect.



### Materials used:

Craftables: CR1539 (Punch die-Lucky), CR1543 (Backgrounds by Marleen- Rectangle), Creatables: LR0588 (Bunny border), LR0589 (Bunny), LR0590 (Easter pins), LR0643 (Easter eggs), LR0650 (Petra's Grass), LR0702 (Wicker basket), Text stamps: CA1043 (Halo

Lente & Pasen-NL), Brads: CA3153 (bronze), Pretty Papers design paper, A4-pad, double-sided: PK9174 (Springtime), Papicolor card Original: black (901), pearly white (930), red (918) and Recycled kraft card grey (322)

Cut a 15 x 15 cm pearly white blank card.

Die cut the bunny border from green design paper and cut off at 14 cm wide. Cut 14 wide strips from design paper and cut off in different heights.

Use these strips and the bunny border to make a hill 14 cm wide and approx. 9 cm high (including the grass, but without the bunnies).

Die cut a background from blue design paper. Adhere the layers to the card. Die cut the rabbits, flowers and eggs from different card colours and design paper again and adhere.

Die cut the basket and handles from kraft card. Fix the handles with a brad. Adhere the basket with 3D-kit/foam tape to the card. Die cut and emboss different eggs from design paper and place into the basket.

Complete the card as per example given.

By Neline Plaisier  
neline-mycardcreations.blogspot.com

### General instructions:

Stamp TC0881 (Tiny's Blossom) onto watercolour paper, white card and craft tape. Cut out the image stamped on craft tape and adhere to the image stamped on the watercolour paper. Work the background with the distress ink colours mentioned in the description of the card. Dab the mask stencil with the same colours of distress ink as used for the background, or as mentioned in the description of the card. Then remove the craft tape and colour in, for instance with colour pencils.

For the loose parts: stamp the blossom onto white card, die cut, colour in and adhere with 3D-glue.

Stamp the text with Archival jet black ink.

Stamp TC0882 (Tiny's Perfume) onto design paper and watercolour paper and die cut.

Colour in the perfume bottle die cut from watercolour paper with distress ink scattered straw.

Die cut the powder brush (LR0704 Make-up set) as per example from raven black, gold and kraft card or design paper.

Work the edge of the brush with distress oxide ink worn lipstick. Die cut the lipstick from metallic paper or design paper and card.

Die cut the nail polish from metallic paper or glitter paper for the cap, pearly white card for the brush and for the bottle use the card colour given in the example. Work the brush with distress ink in a colour that matches the card.

### Materials used for all cards:

Die cut and embossing machine, Text stamps: CS1078 (Wensen by Marleen), Stamping ink: Archival jet black, Pretty Papers design paper A4-pad, double-sided: PK9174 (Springtime), Papicolor card Original: pearly white (930), Watercolour paper, Colour pencils or another colouring medium

### Extra needed for this card:

Craftables: CR1360 (Basic passe partouts with stitches-Circles), CR1390 (Basic passe partouts with stitches-Rectangles), Stamps+dies set: TC0881 (Tiny's Blossom), Decoupage sheet: VK9584 (Daydreaming)

Cut a 12.5 x 12.5 cm pearly white blank card and 11.5 x 11.5 cm and 9 x 9 cm design paper. Die cut the square from design paper. Cut a 9.5 x 10 cm pearly white card and die cut a circle from its centre. Stamp the blossom at the top and colour in.

Stamp the blossom onto pearly white card, colour in and die cut. Stamp the text and adhere a picture behind the circle.







**Extra needed for this card:**  
 Craftables: CR1537 (Slimline frames), Creatables: LR0704 (Make-up set), Decoration paper: CA3126 (gold), Metallic paper: CA3139 (light

pink), CA3140 (mint), Mask stencil: PS8084 (Tiny's Flowers), Stamps+dies sets: TC0881 (Tiny's Blossom), TC0882 (Tiny's Perfume), Papicolor card: Recycled kraft brown (323) and Original raven black (901), blossom (934), Distress oxide ink: tumbled glass, Victorian velvet, Distress ink: scattered straw, Sequins

Cut a pearly white 20.75 x 9.75 cm blank card. Die cut the Slimline frame from pearly white card and design paper. Stamp the blossom. Work the background with PS8084 and distress oxide ink Victorian velvet. Stamp the perfume bottle as per example given onto watercolour paper and design paper. Stamp the blossom onto white card.

Die cut the make-up set as per example and follow the general instructions. Stamp a text and complete the card with sequins.



**Extra needed for this card:**  
 Craftables: CR1510 (Long tags), Creatables: LR0704 (Make-up set), Decoration paper: CA3126 (gold), Mask stencil: PS8084 (Tiny's Flowers), Stamps+dies sets: TC0881 (Tiny's Blossom), TC0882 (Tiny's Perfume), Distress oxide ink: tumbled glass, broken china, Gel pen: white, Scrapper's thread: black

Cut a 14 x 10 cm pearly white blank card and 13.25 x 9.25 cm watercolour card. Stamp the blossom and work the background. Die cut the long tag from pearly white card and design paper, stamp the blossom.

Work the background with a white gel pen.

Stamp a text and cut into a banner.

Die cut the make-up set and follow the general instructions.

Stamp and die cut the parfum bottle.



**Extra needed for this card:**  
 Creatables: LR0704 (Make-up set), Craftables: CR1510 (Long tags), CR1374 (Box Card), Decoration paper: CA3126 (gold), Soft glitter paper: CA3143 (gold), CA3148 (light pink), Stamps+dies set: TC0882

(Tiny's Perfume), Craft stencils: PS8056 (Bag by Marleen), PS8068 (Leopard print), Distress oxide ink: antique linen, worn lipstick, Distress ink: brushed corduroy, hickory smoke, fired brick, Papicolor card Original: raven black (901), red (918), blossom (934), Christmas red (943), army green (954) and Recycled kraft brown (323), Vellum, fine liner: black, Scrapper's thread: black

Work a piece of watercolour paper with distress oxide ink antique linen, dab PS8068 (Leopard print) with distress ink brushed corduroy and hickory smoke. Copy the bag onto the watercolour paper with leopard print and onto raven black card. Cut out and assemble. Copy the bag a second time onto raven back card, this time without the handles. Score at 2.5 cm down from the top and fold over. Attach double-sided tape to this glue strip and adhere to the bag in front.

The card can stand now. Die cut the make-up set. Die cut the eye shadow box from black card, brown kraft, design paper and watercolour paper. Work the watercolour paper with different tints of brown ink. Stamp and die cut the blossom, colour in. Die cut the long tag from pearly white and black card, stamp the text. Die cut the flowers and leaves from army green card and design paper. Add a pearl to the flowers.

Draw dotted lines onto the bag using a fine liner.

### Materials used for all cards:

Craftables: CR1396 (Vines), CR1539 (Punch die-Lucky), CR1455 (Punch die-Fairy), CR1542 (Potted plants by Marleen), Creatables: LR0697 (Blossom), Die cut and embossing machine, Text stamps: CS1079 (Wishes by Marleen), Stamping ink: VersaMark transparent, Embossing powder: Stampendous white EP100, Pretty Papers design paper pads A4-double sided: PK9170 (Wood & Stone), PK9174 (Springtime), Papicolor card Original: pearly white (930), vanilla (963), light green (970), Card: army green and light orange, Decoration paper: CA3127 (silver), Snow paper: CA3104 (glitter), Vellum, Acrylic stamping block, Adhesive pearls: CA3133 (off-white)



#### Extra needed for this card:

Craftables: CR1536 (Arch by Marleen), CR1544 (Backgrounds by Marleen-Square), Creatables: LR0650 (Petra's Grass), Distress ink: peeled paint

Cut a 15 x 13.5 cm pearly white top-fold card. Die cut the Craftable "Backgrounds by Marleen-square" from design paper and adhere.

Cut/tear a 12 x ca. 1.5 cm army green strip and adhere.

Die cut the fence and hedge arch, work the leaves with ink and adhere as per example given.

Die cut the other parts needed, assemble and adhere.

Complete the card with a fairy and pearls.



#### Extra needed for this card:

Craftables: CR1541 (Garden tools by Marleen), CR1543 (Backgrounds by Marleen-Rectangle), Distress ink: peeled paint, Craft stencil: PS8022 (Wheelbarrow by Marleen), Mini ink blending tool, Wax cord: green

Draw the outline of the wheelbarrow onto white card. Do this twice, once the normal way and once in mirror image. Cut both out.

Take the one in mirror image and score a line at 10 cm left from the wheel, fold over.

Die cut the Craftable "Backgrounds by Marleen-rectangle" from design paper and adhere behind the front of the wheelbarrow. Then adhere both wheelbarrows together with the left-hand sides where the handle is. The card can stand now.

Use the inner lines of the stencil to decorate. Draw them onto the reverse side of design paper. Do not forget to turn the stencil over to avoid drawing in mirror image. Cut out and adhere, 3D-foamtape can be used for the top of the wheelbarrow.

Die cut the other parts needed. Work the leaves with green ink. Assemble and adhere.

Cut a 7.5 x 1.5 cm blue strip and stamp a text with VersaMark, work with embossing powder and heat with a heat tool.

Adhere to the card and add a bow and pearls.



#### Extra needed for this card:

Craftables: CR1540 (Wishing well by Marleen), CR1543 (Backgrounds by Marleen-Rectangle), Creatables: LR0650 (Petra's Grass), Distress ink: pumice stone and walnut stain

Cut a 15 x 10.5 cm pearly white top-fold card. Die cut the Craftable "Backgrounds by Marleen-rectangle" from design paper and adhere.

Tear/cut a 7.5 x 1.5 cm army green strip and adhere.

Die cut the parts of the wishing well, work with ink, assemble and adhere.

Die cut the other parts needed and adhere.

Cut a 5.5 x 1.3 cm strip, stamp a text, work with embossing powder, heat with a heat tool and adhere.

Complete the card with a fairy and pearls.